

OLD WORLD WEAVERS
**WOODLAND
ESTATE**

FABRIC & WALLCOVERING COLLECTION



THE HOUSE OF SCALAMANDRÉ

WOODLAND ESTATE

ELEGANCE FOR OUR TIMES

The newest fabric and wallcovering assortment from Old World Weavers, was inspired by the signature, understated charm of a David Easton-designed cottage in Connecticut. The collection shimmers with whimsical embroideries, unfussy textures and color-saturated prints that layer effortlessly to (as the late Easton liked to say) 'make a room dance.'

Each fabric tells a story. It begins deep in the woods with the surprise spotting of forest fauna in Tails Tale, and the dense foliage shown in our verdure tapestry Ridge Edge.

Then, crossing the open lawn, the trees give way to reveal the open sky shown in Central Park print. Now we enter the home, decorated in a myriad of coordinating hues and motifs from our collection. The fabrics in the collection are designed and colored to blend effortlessly throughout all rooms of the home, led by four statement prints.

The diverse offering of jacquards, velvets, prints, embroideries and silks allows the collection to move easily from casual, cozy nooks to formal vignettes.





PLUMES SILK VELVET & BOTANY BAY



RIDGE EDGE, WINDSOR BULLION, ESTATE DAMASK & CARLYLE BULLION

RIDGE EDGE

A true classic verdure tapestry of deep lush foliage is given new dimension by its washed treatment. This finish both softens and lifts the wool for a unique tactile effect. To create a tapestry, multicolored yarns are set in the warp and then the colors are blended at a Belgian mill.



RIDGE EDGE (COTTON)
MOSS
BZ 0036 060C



RIDGE EDGE (WOOL)
BLUE SHADOW
BZ 0062 060W



RIDGE EDGE - COTTON



ORNAMENTAL GATE



TAILS TALE

The springboard pattern for Woodland Estate, Tails Tale is a cut velvet depicting an enchanted forest teeming with peaceful animals. The cut and looped velvet weaves give distinction to the motifs and allow the eye to wander in discovery. The pile is made of cotton for better durability and with its Martindale rating of 50,000 cycles, Tails Tale is well-intended for upholstery use.



FOREST
M1 0002 0264



TRAVERTINE
M1 0003 0264



BLUE WOOD
M1 0001 0264







BOTANY BAY



HILLSIDE CREWEL, BOTANICAL GARDEN, CHARLOTTE STRIPE, FAYE,
ORNAMENTAL GATE, TIMBERLAKE VELVET & LILETTE SHEER



TIMBERLAKE VELVET

A striking formal stripe is softened by multicolor ombré gradations in our Timberlake Velvet. This new addition to our stripes offerings has upholstery application in mind. The viscose pile adds luster while not detracting from the durability of 50,000 Martindale cycles. Timberlake Velvet is colored to coordinate with each of our prints and wovens to create a layered room environment.



PRISM
JM 0005 0592



ROSE APRICOT
JM 0006 0592



TRAVERTINE
JM 0004 0592



FOREST
JM 0003 0592



BLUE JAY
JM 0002 0592



BLUE WOOD
JM 0001 0592





HILLSIDE CREWEL & LILETTE SHEER



TIMBERLAKE VELVET, BOTANICAL GARDEN & ORNAMENTAL GATE

HILLSIDE CREWEL

This flowing Jacobean design has been interpreted as a new kind of crewel. With alternated rustic crewel chain stitches with lighter refined embroidery, the effect is multidimensional. Viscose, acrylic and spun polyester yarns are embroidered on a linen cotton ground to create a beautiful juxtaposition.



BLUE WOOD
S7 0001 HILL



CELADON
S7 0002 HILL



IVORY
S7 0003 HILL



LILETTE SHEER

Lillette embroidered sheer captures hearts with its flowing floral vines in alternating colored and metallic yarns. It is delicately stitched on a silk, cotton and linen sheer ground in single width. In its simple elegance, it is the perfect under curtain for Estate Damask, Ornamental Gate, Charlotte Stripe and Botanical Garden drapery. Complete this perfect room with upholstery in Timberlake Velvet and Faye texture.



CELADON
P4 0003 9863



FERN
P4 0001 9863



PORCELAIN
P4 0004 9863



IVORY
P4 0002 9863





CHARLOTTE STRIPE & LILETTE SHEER



CENTRAL PARK

A twist on the classic tree motif breathes fresh air into interiors. Printed on luxe cotton poplin in Italy, our new print, Central Park, captures the ever-changing beauty of foliage, from muted greens and cloudy blues to bright, multicolor tones. While not a direct coordinate, Central Park makes a fine companion to Raphael wallcovering.



GREEN
CN 0001 0071



LIGHT BLUE
CN 0002 0071



AUTUMN
CN 0003 0071







CENTRAL PARK, FAYE & TORINO VELVET

FAYE

Faye's immediate appeal as a companion fabric is its interweaving of five diverse, textural yarn qualities in the warp and again in the weft, from space-dyed yarn and chenille to textured linen. While it is unusual and difficult to combine so many kinds of yarns in the warp, this allows for a multicolored, tactile, versatile texture. Faye is woven at a skilled Italian mill and makes a perfect choice for seating in any room.



TRAVERTINE
BI 0008 FAYE



PETAL
BI 0006 FAYE



CONFETTI
BI 0007 FAYE



OLIVE CORAL
BI 0005 FAYE



CORNFLOWER
BI 0002 FAYE



AQUAMARINE
BI 0003 FAYE



PRAIRIE
BI 0004 FAYE



BLUE WOOD
BI 0001 FAYE

PLUMES SILK VELVET

This dynamic, Art Deco-inspired, silhouetted cut velvet is a showstopper. Its irresistible Italian flair sets the stage for drama. Imagine these bold, alternating plumes on floor to ceiling drapes, upholstered screens or occasional seat backs. The rich, jewel tone colors become deeper or more brilliant as light plays over the surface of the velvet.



VIRIDIAN
CN 0001 1523



SAPPHIRE
CN 0002 1523



CERISE
CN 0003 1523





DRAPERY: BOTANY BAY WITH PLAZA TASSEL FRINGE. CHAIR SEATS: BOTANICAL GARDEN.
TABLE COVERS: CHARLOTTE STRIPE & ESTATE DAMASK.



GREENHOUSE, ORNAMENTAL GATE & TIMBERLAKE VELVET



ESTATE DAMASK & BOTANY BAY

BOTANY BAY

Our popular 19C, beautifully drawn English archival print of stately pheasants perched on a floral branch, now has an expanded color line. Printed in England on a linen blended ground. Botany Bay has been used to make dramatic drapes and to cover occasional seating.



PERENNIAL GARDEN
JP 0005 1340



SKY MULTI
JP 0001 1340



PORCELAIN
JP 0003 1340



FOREST
JP 0004 1340



JADE
JP 0006 1340



BLACK RUBY
JP 0002 1340



ESTATE DAMASK



CHARLOTTE STRIPE

ESTATE DAMASK

The silk damask, originally called Diaspron, has been cherished by emperors and kings since it was first introduced in China in 300 BC. Traded along the Silk Road, the caravans passed through Damascus, the center of Syria, which became a hub for manufacturing silk. By the 14th century, these luxury fabrics were known as Damasks. A stylish take on the Newport Damask, this fabric features a thistle artichoke motif with broadly spreading leaves. Estate Damask has translated the traditional motif into a smaller scale, blending silk with cotton and viscose for a less formal air.



PALM
PQ 0001 1865



BLUE JAY
PQ 0002 1865



PETAL
PQ 0003 1865



TRAVERTINE
PQ 0004 1865



CHARLOTTE STRIPE

The call for silk-taffeta stripes has been answered! Charlotte is a 100% silk, balanced stripe, nuanced with strie colors and satin ribbons. A painter's palette to coordinate with each color story in the Woodland Estate Collection, Charlotte offers a formal stripe option to layer in with every print and woven.





MOSS
ND 0001 6130



CELADON
ND 0003 6130



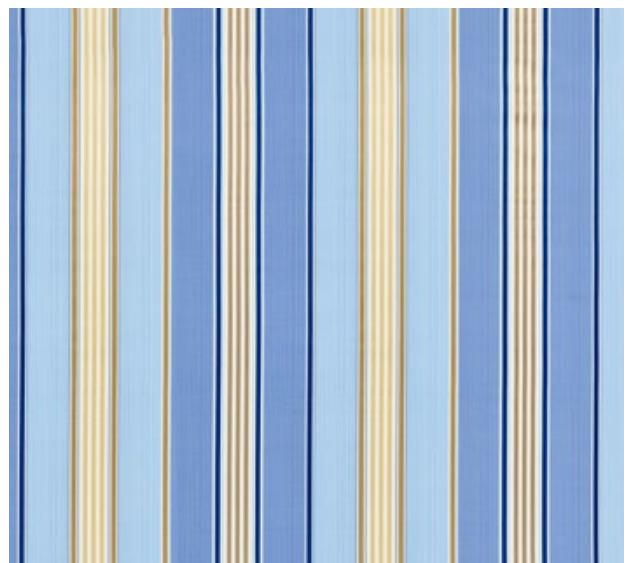
PATINA
ND 0005 6130



BLUSH
ND 0006 6130



PERENNIAL
ND 0004 6130



MARINE
ND 0002 6130

BOTANICAL GARDEN

Freshly cut flowers from a spring garden of climbing roses, peonies, tulips and dahlias make the perfect burst of color for draperies or decorative bedding. Printed in Italy on a fine cotton sateen, this lively floral will brighten any living room, dining room or bedroom.



SUMMER MULTI
B0 0001 3506



ROSE QUARTZ
B0 0004 3506



PORCELAIN BLUE
B0 0003 3506



CELADON
B0 0002 3506





BOTANICAL GARDEN



TIMBERLAKE VELVET

ORNAMENTAL GATE

Referencing the architectural decorative motifs on ironwork garden gates, this graphic print is softened by the rosettes and lyrical scrolls that are screen printed on a 100% silk ground. The clear, monochromatic colorings allow Ornamental Gate to be used as the focal point of elegant drapery, or to blend easily in a room with our coordinating fabrics such as Estate Damask, Charlotte Stripe, Lilette Sheer and Faye.



TRAVERTINE
YD 0003 5736



FERN
YD 0001 5736



CELADON
YD 0005 5736



PETAL
YD 0004 5736



SKY
YD 0002 5736





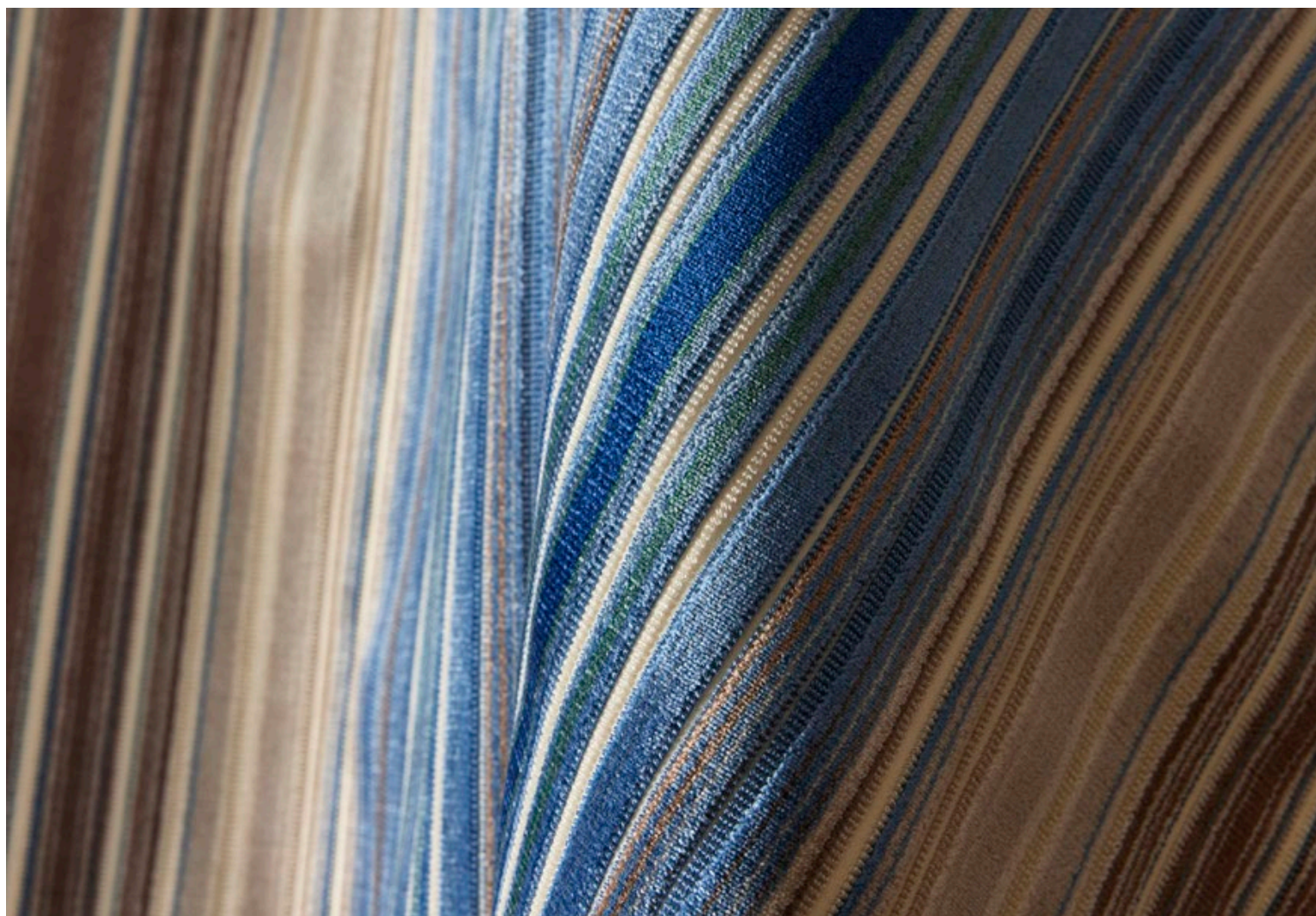
CHARLOTTE STRIPE



TAILS TALE



CHARLOTTE STRIPE, RIDGE EDGE,
MANETTA WITH CARLYLE BULLION & HILLSIDE CREWEL



TIMBERLAKE VELVET



BOTANY BAY WALLCOVERING, SHIRRED STRIPE,
TORINO VELVET & CENTRAL PARK



FAYE, BOTANY BAY & TIMBERLAKE VELVET

BOTANY BAY WALLCOVERING

Our popular 19C, beautifully drawn English archival print of stately pheasants perched on a floral branch, now has an expanded color palette. We are happy to announce the addition of Botany Bay wallcoverings. The same six colors are produced in England on a non-woven ground for an extension of this cult-classic motif.



PERENNIAL GARDEN
WJR 0005 6822D



SKY MULTI
WJR 0001 6822D



PORCELAIN
WJR 0003 6822D



FOREST
WJR 0004 6822D



JADE
WJR 0006 6822D



BLACK RUBY
WJR 0002 6822D







GREENHOUSE

GREENHOUSE

This whimsical interpretation of fantastical flora is not far from the reality of the otherworldly plants that exist in nature. Embroidered on a linen cotton in popping primary and deep mystical colors, Greenhouse has an array of shades to outfit any room with decorative panels.



BOUQUET
S7 0001 5400



POTTING SOIL
S7 0002 5400



NIGHT SHADE
S7 0003 5400





OLD WORLD WEAVERS

WOODLAND ESTATE FABRIC & WALLCOVERING COLLECTION



TAILS TALE
3 COLORWAYS (M1 0264)



TIMBERLAKE VELVET
6 COLORWAYS (JM 0592)



HILLSIDE CREWEL
3 COLORWAYS (S7 HILL)



FAYE
8 COLORWAYS (BI FAYE)



CENTRAL PARK
3 COLORWAYS (CN 0071)



RIDGE EDGE (WOOL)
1 COLORWAY (BZ 060W)



RIDGE EDGE (COTTON)
1 COLORWAY (BZ 060C)



PLUMES SILK VELVET
3 COLORWAYS (CN 1523)



BOTANY BAY
6 COLORWAYS (JP 1340)

OLD WORLD WEAVERS

WOODLAND ESTATE FABRIC & WALLCOVERING COLLECTION



LILETTE SHEER
4 COLORWAYS (P4 9863)



ORNAMENTAL GATE
5 COLORWAYS (YD 5736)



ESTATE DAMASK
4 COLORWAYS (PQ 1865)



CHARLOTTE STRIPE
6 COLORWAYS (ND 6130)



BOTANICAL GARDEN
4 COLORWAYS (B0 3506)



GREENHOUSE
3 COLORWAYS (S7 5400)



BOTANY BAY
WALLCOVERING
6 COLORWAYS (WJR 6822D)

ORDER YOUR
MEMOS ONLINE
[SCALAMANDRE.COM/
WOODLAND-ESTATE](http://SCALAMANDRE.COM/WOODLAND-ESTATE)



CHARLOTTE STRIPE & BOTANY BAY

THE HOUSE OF
Scalamandre

www.scalamandre.com/woodland-estate

1.800.932.4361