



Scalamandre

THE
MET

An Inspired Collaboration



REGIS VELVET DAMASK & DAPHNE SWIVEL CHAIR IN AVIGNON BROCADE



LENGTH OF FURNISHING VELVET,
FIRST QUARTER OF THE 18TH CENTURY

Scalamandré

THE
MET

Every day, thousands of individuals ascend the majestic limestone stairs flanked by columns, venturing into the intricate network of galleries that house a myriad of timeless artworks at The Metropolitan Museum of Art.

Only a select few enjoy unrestricted access to The Met's sprawling two million square feet of gallery space, not to mention the countless treasures housed in its collection. In a momentous occasion, Scalamandré was granted the rare privilege.

For this much-anticipated collaboration, the Scalamandré studio strived to pay homage to this insider experience, exploring thousands of artworks and objects across The Met's 17 curatorial departments to create a rich mosaic of historical narratives. Drawing inspiration from the likes of a 16th-century German suit of armor to the ruffle detailing on an 18th-century British gown, the more than 120-item

collection reimagines a range of esteemed works of art as wallcovering, fabric and trimming. Each motif is a celebration of artisanship, inspired by exquisite forms and cultural traditions.

Informed by Scalamandré's legacy of textile design, this collaboration feels both excavated from the past and distinctly contemporary, translated through a modern lens. Following their first collaboration with The Met in the 1970s, Scalamandré brings museum magic into the home once again through this artful interpretation that pays homage to art and history.



PERSEPHONE WALLCOVERING & PRINTED FABRIC
BEDFRAME UPHOLSTERY: FAYE WITH BOULEVARD CORD. PILLOWS: PARLOR VELVET &
FLEUR EMBROIDERY. PARK AVENUE BENCH IN PARLOR VELVET WITH BOULEVARD CORD.

Wallpaper Mural



METROPOLITAN PALAMPORE - MURAL
SC WP88567

Prints

The following four designs are available
as coordinating fabrics & wallpapers



METROPOLITAN PALAMPORE
FABRIC & WALLCOVERING
SC 16649 & SC WP88561



PERSEPHONE PRINT
FABRIC & WALLCOVERING
SC 16651 & SC WP88563



ISADORA PRINT
FABRIC & WALLCOVERING
SC 16650 & SC WP88562



CAMELLIA TRELLIS
FABRIC & WALLCOVERING
SC 16648 & SC WP88566

Wallcoverings – Handmade, Embroidered or Appliquéd



KARANFIL BLOCK PRINT
WALLPAPER
SC WP88560



TAJ EMBROIDERED
SISAL
SC WP88555



SAXONY SCROLL
WALLCOVERING
SC WP88558



MILAN DIAMOND
GRASSCLOTH
SC WP88556



KNIGHT SC WP88559



FRET MOSAIC
GRASSCLOTH
SC WP88557

Tapes – Embroidered or Embellished



SAXONY
SC T3337

MILAN
SC T3338

ARCHDUKE
SC T3339

PAISLEY
SC T3340

REINE
SC T3342

FLAMME
SC T3335

RUFFLE
SC T3341

AMARNA
SC T3336

Fabrics – Printed, Embroidered or Woven



FLEURS TROPICALES
PRINT FABRIC
SC 16647



SERAPHINE
EMBROIDERED SILK
SC 27325



KEMHA WOVEN
SC 27326



AVIGNON BROCADE
SC 27322



DRAGON TABLEAU
WOVEN
SC 27327

Velvets



REGIS VELVET DAMASK
SC 27321



MILLEFLEUR VELVET
SC 27328



KASAI VELVET
SC 27323



PARLOR VELVET
SC 27324

Scalamandre

**THE
MET**

WWW.SCALAMANDRE.COM/THE-MET
FOR THE INSPIRATION

Drawing from the Met's Textile Legacy



18TH-CENTURY FRENCH PRINT
INSPIRED PERSEPHONE
FABRIC & WALLPAPER



18TH-CENTURY SILK PANEL CRAFTED IN CHINA FOR
THE FRENCH MARKET INSPIRED CAMELLIA TRELLIS
FABRIC & WALLPAPER



19TH-CENTURY FRENCH PRINTED
FLORAL INSPIRED ISADORA
FABRIC & WALLPAPER



WALLCOVERING & KENNEDY LONG SOFA IN CAMELLIA TRELLIS. PILLOWS: FAYE, CAMELLIA TRELLIS, ETOSHA VELVET & ERMINE.
DRAPERY: OLYMPIA SILK TAFFETA. CALLAHAN CHAIR IN ESTATE DAMASK. GRACE ROUND OTTOMAN IN FAYE WITH BOULEVARD CORD.



ISADORA PRINT
TIMBERLAKE VELVET WITH BOULEVARD CORD

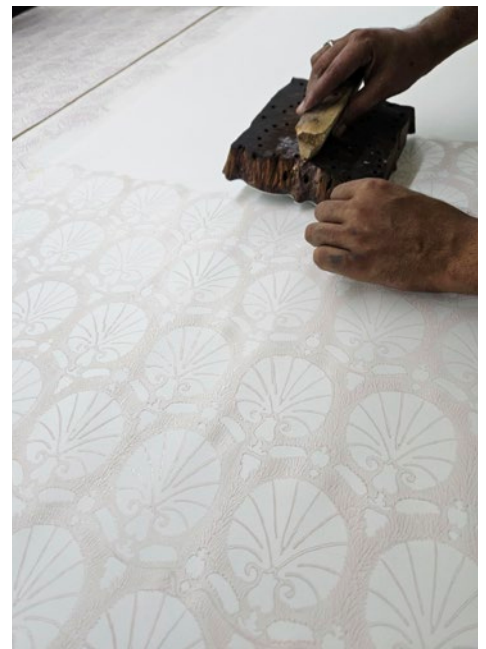
Millefleur Velvet

Millefleur Velvet borrows its pattern from *The Unicorn Rests in a Garden* (1495–1505), a highlight of the collection at The Met Cloisters. Crafted with meticulous precision in a cut-and-epingle 100% cotton velvet weave, Millefleur Velvet evokes the charm and craftsmanship of the original medieval French and South Netherlandish tapestry. Its bold palette and intricate botanical detail captivate the discerning eye, paying homage to a true icon of medieval artistry.



Karanfil Hand Block Print Wallpaper

The Karanfil Block Print is a tribute to a 17th-century Turkish panel in the Museum's Islamic art collection. The original source is a cut velvet featuring repeating stylized carnations. The carnation motif present on both the original textile and our wallpaper is a Turkish symbol of life. Karanfil wallpaper is hand-printed with wood blocks on non-woven paper to create an eye-catching piece of art for the wall.



KARANFIL BLOCK PRINT WALLPAPER, PARLOR VELVET & KEMHA WOVEN



SERAPHINE EMBROIDERED SILK & SHIRRED STRIPE

Seraphine Embroidered Silk

Seraphine Embroidered Silk draws its inspiration from a luxurious *robe à la française* in The Met's Costume Institute. The exemplary 18th-century British garment, crafted from hand-painted silk, with a dramatic silhouette that tapers at the waist and billows at the hips, epitomizes the insatiable baroque opulence of its era. Seraphine, in turn, captures the essence of these qualities, with its exquisite floral embroidery adorning a foundation of 100% pure silk. A true showstopper, Seraphine is the embodiment of timeless elegance, poised to stand as the centerpiece of any space.



Ruffle Tape



Inspired by a bright canary-yellow dress from 18th-century Britain in the collection of The Costume Institute, this 100% silk tape's centralized ruffle lends a simplistic yet delicate detail.



PAISLEY EMBROIDERED TAPE, FLAMME EMBROIDERED TAPE, PARLOR VELVET, OLYMPIA SILK TAFFETA & TORINO VELVET

Parlor Velvet, Flamme & Reine Embroidered Tapes

The patterns on Parlor Velvet and our embroidered tapes are inspired by an 18th-century fauteuil, or armchair, originally intended for Marie-Antoinette's *grand cabinet intérieur* at Versailles. The armchair boasts finely brocaded and appliquéd silk with botanical motifs.



Metropolitan Palampore



In 18th-century Europe, Indian dyed cloths known as palampores were prized as hand-printed bed coverings and wall hangings. The inspiration for our pattern is a palampore featuring a flower-and-fruit-bearing serpentine tree emerging from a hillock with stylized peaks. Originally sourced to Sri Lanka, it was likely made for European communities in Batavia and Colombo, or for families of mixed European and Asian

descent wishing to emulate Western taste.

METROPOLITAN PALAMPORE WALLPAPER MURAL

The Metropolitan Palampore – Mural is a set-contained panel inside a floral border. A large serpentine tree surrounded by flora is digitally printed on non-woven paper and is a striking focal point in any room. The 14-foot-long panel can be resized for lower ceiling heights. To reduce the height of the mural, the top border may be cut off, straight under the floral garland. The center section of the mural may then be cropped to reduce it to the desired height. The top border will be placed back above the panel to sit at the top of the wall. The standard height of this wall panel is 14 feet (4.66 yards). The border height is 8.5". The bottom border and mountainous base together are 25" high. The center climbing tree section is 134.5" high. Within this section, the pattern vertical repeat is 60.5".

METROPOLITAN PALAMPORE WALLPAPER

Digitally printed on non-woven paper, this design showcases a large-scale repeat pattern of the original motif, featuring a serpentine tree surrounded by flora.

METROPOLITAN PALAMPORE PRINTED FABRIC

Featuring the elemental design depicting a flower-and-fruit-bearing tree, which is digitally printed on a cotton-and-linen blend to ensure clean precision and detail in every roll.

The Metropolitan Palampore Mural, Wallcovering and Printed Fabric are offered in four colorways: Sky & Sunlight, Aegean, Flower Garden, and Red Multi.





METROPOLITAN PALAMPORE
WALLPAPER



METROPOLITAN PALAMPORE
WALLPAPER MURAL



SKY & SUNLIGHT



AEGEAN



FLOWER GARDEN



RED MULTI

METROPOLITAN PALAMPORE
PRINTED FABRIC

METROPOLITAN
PALAMPORE PILLOWS



FLEURS TROPICALES
POLAR BEAR, ANTELOPE & UPTOWN SETTEE IN PARLOR VELVET

Kasai Velvet



AVIGNON BROCADE



SERAPHINE
EMBROIDERED SILK



DRAGON TABLEAU



REINE TAPE

SCALAMANDRE.COM/PILLOWS



Taj Embroidered Sisal

Arches supported by baluster pillars became popular in mid-17th-century Indian palaces during the reign of Shah Jahan. The form then spread throughout central and northern India, showing up in both residential and religious spaces.

Embroidered on three colorways, our Taj Embroidered Sisal wallcovering reproduces the elaborate details and shapes of the Museum's example.





KEMHA WOVEN

OTTOMAN UPHOLSTERY: TORINO VELVET WITH SAXONY EMBELLISHED TAPE.

PILLOWS: STRIÉ VELVET WITH MILAN APPLIQUE TAPE AND SAXONY EMBELLISHED TAPE.

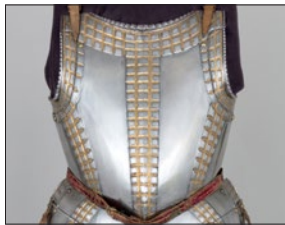
Arms & Armor Inspired

TRIMMINGS & WALLCOVERINGS



SAXONY

MILAN



ARCHDUKE



PAISLEY



SAXONY SCROLL WALLCOVERING & ESTATE DAMASK



SAXONY SCROLL WALLCOVERING



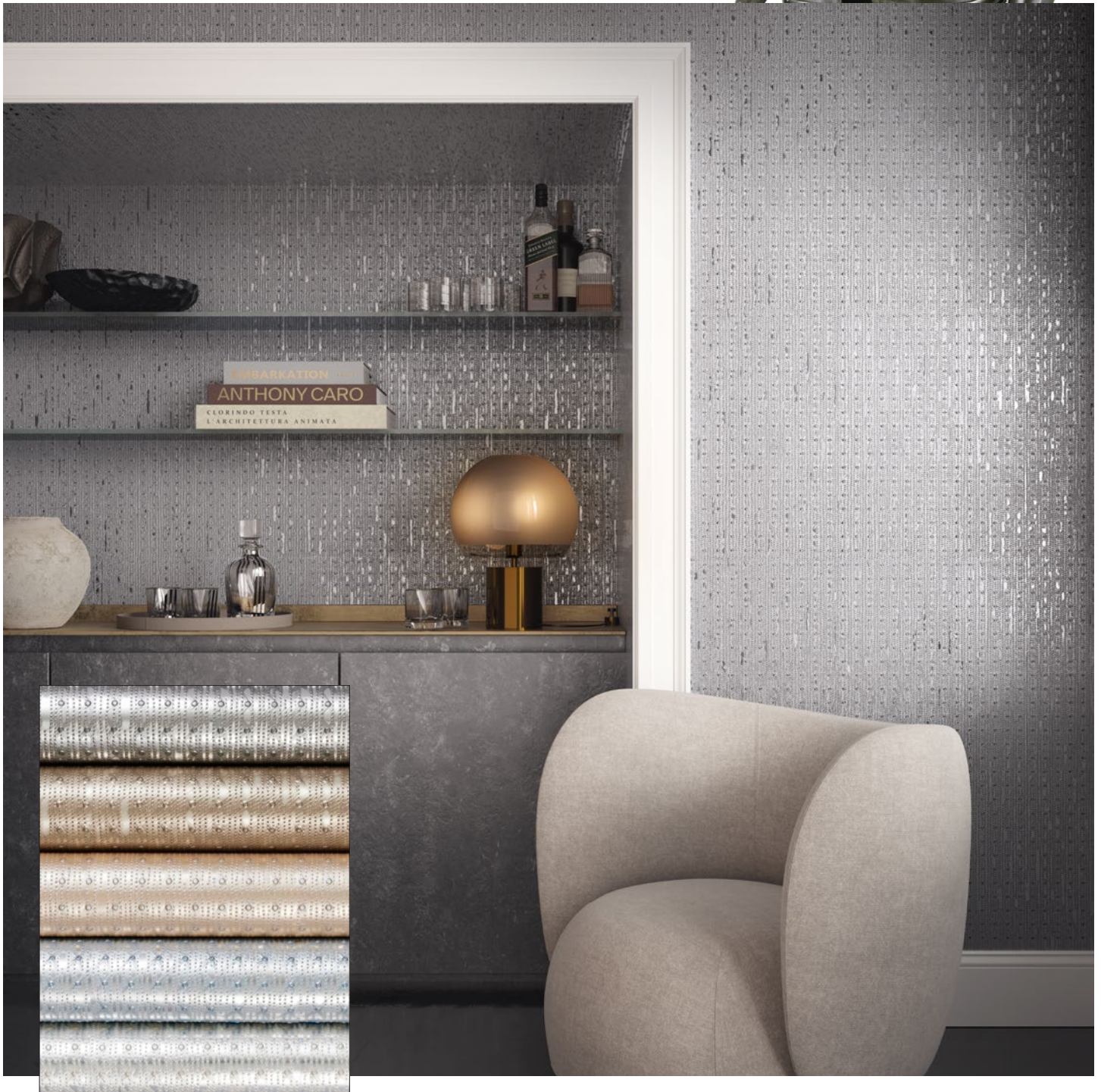
MILAN DIAMOND GRASSCLOTH



MILAN DIAMOND GRASSCLOTH

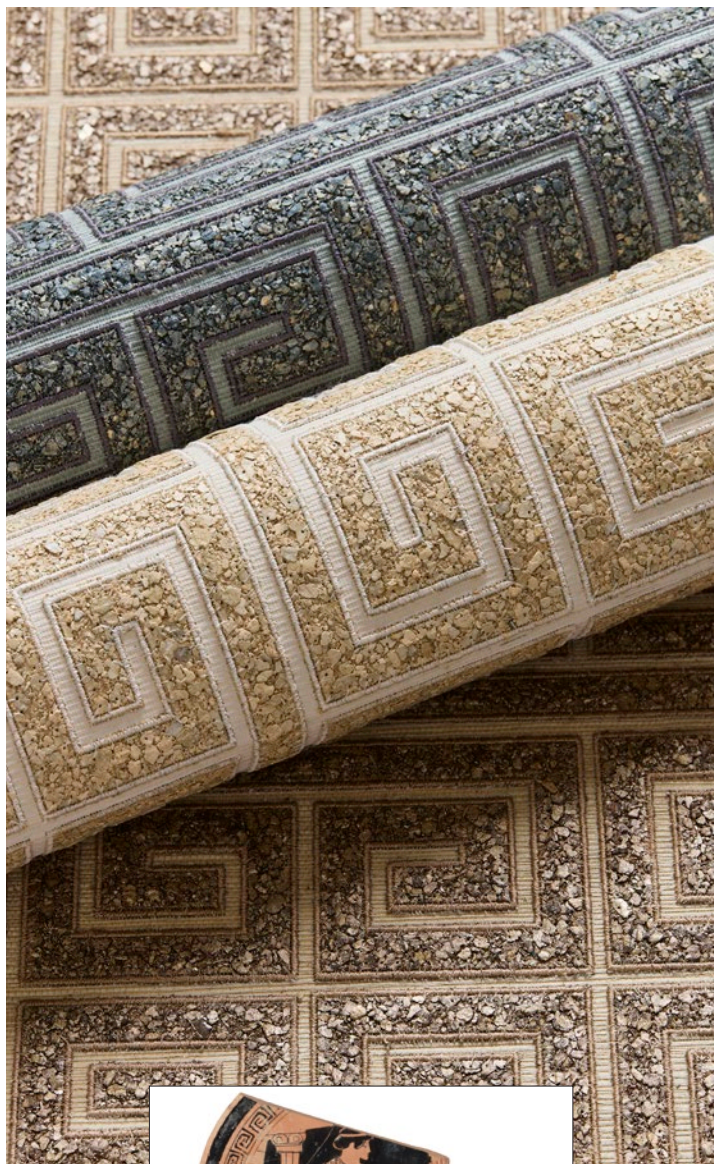
Knights Wallcovering

Our handmade Knight Wallcovering is inspired by armor with northern Italian features characteristic of Milanese or Brescian workmanship. This especially thick type was made for protection against firearms, which were becoming increasingly popular and efficient weapons. Weighing over 86 pounds, it's one of the heaviest known examples of field armor. Before armor of this kind was completed, it was fired at with a pistol or musket to test its effectiveness against bullets, and the bullet dents were left to showcase its strength and quality.



Fret Mosaic Grasscloth

EMBROIDERED GREEK KEY MICA APPLIQUÉ



TERRACOTTA FRAGMENT OF A KYLIX

Amarna

EMBELLISHED TAPE



BROAD COLLAR OF SENEBTISI

Scalamandre

THE
MET

WWW.SCALAMANDRE.COM/THE-MET

PRODUCT DETAILS & ORDERING



Scalamandre

**THE
MET**

[SCALAMANDRE.COM/THE-MET](https://scalamandre.com/the-met)