

Scalamandre

SAHARA

FABRIC & WALLCOVERING COLLECTION



THE HOUSE OF
Scalamandre

www.scalamandre.com

1.800.932.4361

SAHARA

FABRIC & WALLCOVERING COLLECTION

Scalamandré presents the Sahara Collection, a vibrant and eclectic offering inspired by regions of North Africa. This collection builds off the rich tones and graphic sensibility of our bestselling Leaping Cheetah print, now available in both fabric and wallcovering. Bold cotton and linen prints, colorful stripes, and chenille textures can be layered to create truly memorable, Instagram-worthy spaces. From an Egypt-inspired toile to an embroidery drawn from desert grass, this exclusive group of fabrics and wallcovering is designed to transport, delight and inspire. Journey with us through the Sahara Collection!



RIFT LINEN PRINT, RIAD PRINT, ROSETTE WOVEN & HIGHLAND CHENILLE



LOVEGRASS EMBROIDERY & ARROW STRIPE

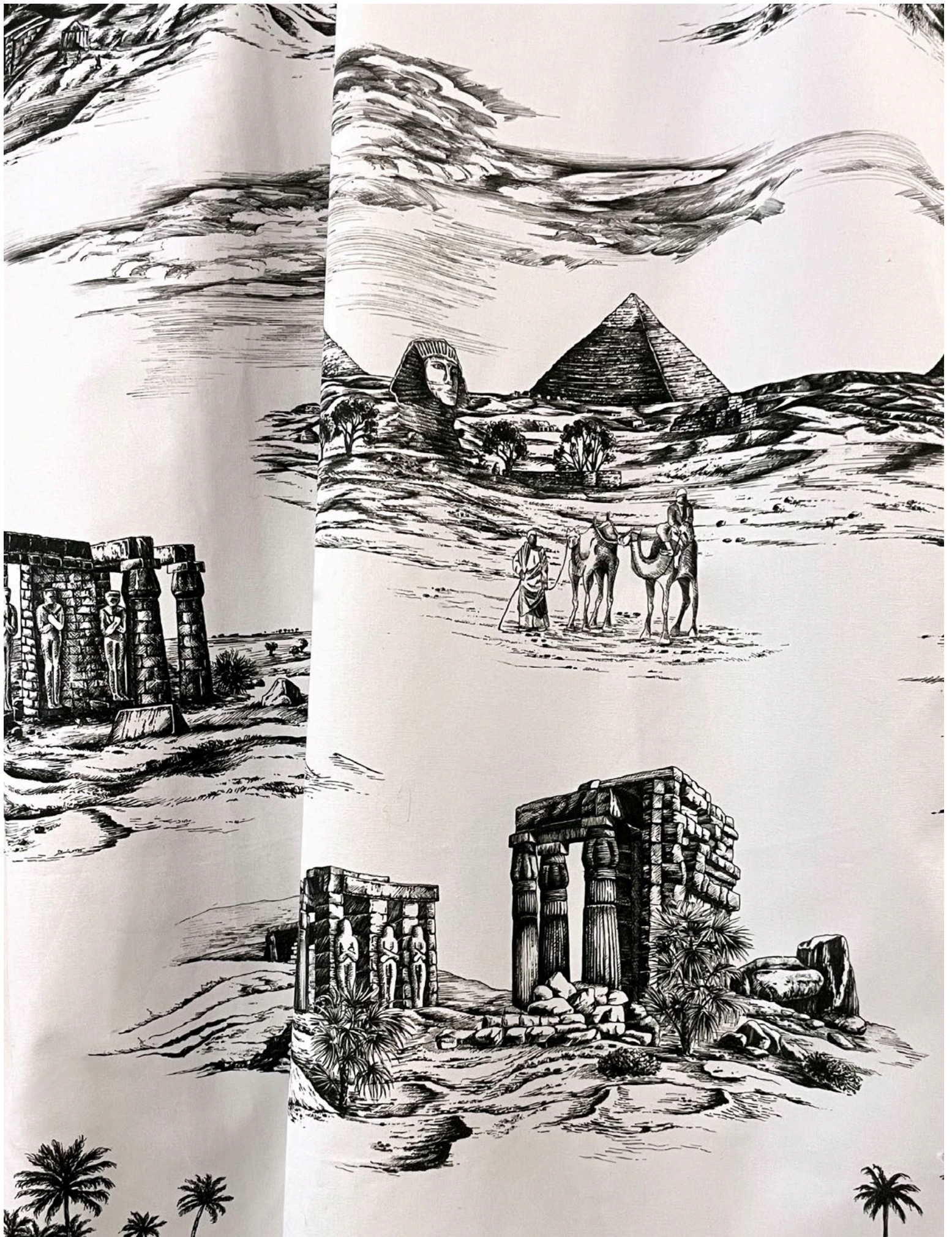


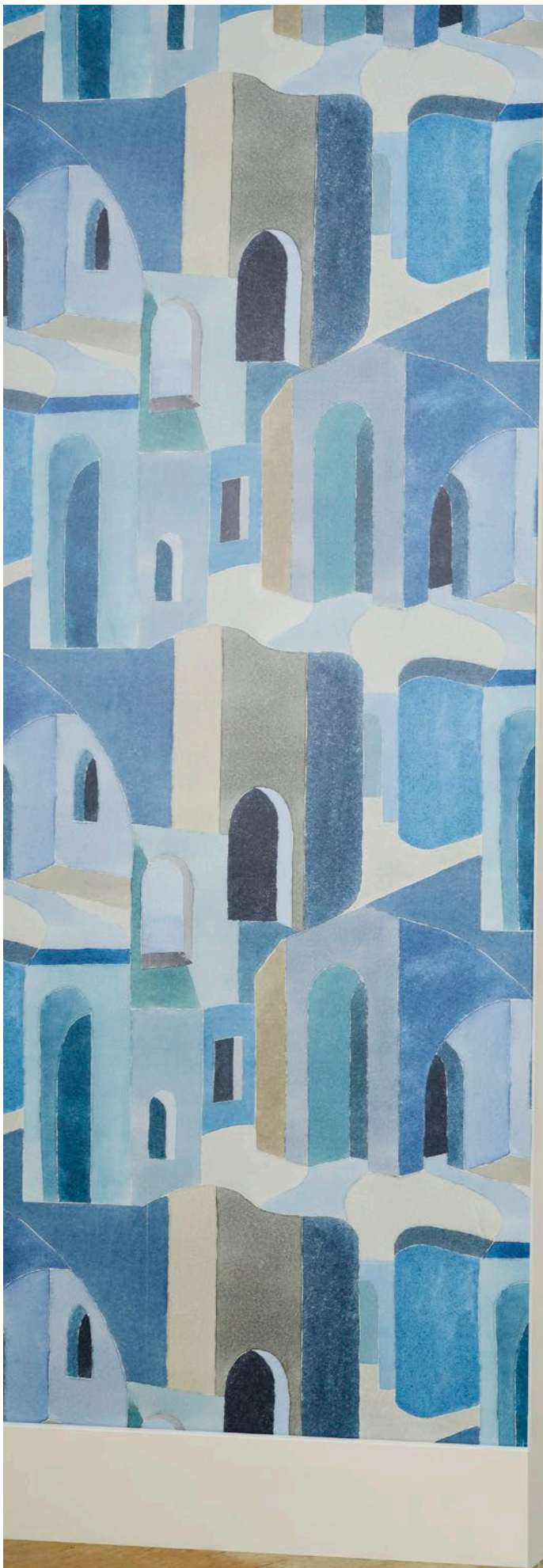


CATWALK EMBROIDERY, NILE STRIPE & LEAPING CHEETAH COTTON PRINT



CAIRO TOILE, HIVE-SLUB, LOVEGRASS EMBROIDERY, HIGHLAND CHENILLE & VELVET ROPE CORD







RIAD WALLCOVERING, LOVEGRASS EMBROIDERY & ARROW STRIPE



LOVEGRASS EMBROIDERY, CAIRO TOILE, RIFT LINEN PRINT, LEAPING CHEETAH COTTON PRINT & HIGHLAND CHENILLE



RIAD COTTON PRINT, HIGHLAND CHENILLE & NILE STRIPE



LEAPING CHEETAH WALLPAPER & FAUX BOIS VELVET



LEAPING CHEETAH COTTON PRINT & HAIKU WEAVE



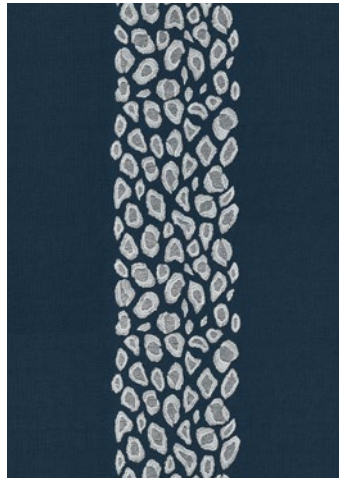
RIFT LINEN PRINT, WOODGRAIN, RIAD COTTON PRINT, ROSETTE WOVEN & HIGHLAND CHENILLE

Scalamandre

SAHARA
FABRIC & WALLCOVERING



LOVEGRASS
EMBROIDERY
2 COLORWAYS (SC 27256)



CATWALK
EMBROIDERY
4 COLORWAYS (SC 27255)



HIGHLAND
CHENILLE
6 COLORWAYS (SC 27257)



LEAPING CHEETAH
COTTON PRINT
6 COLORWAYS (SC 16634)



RIFT LINEN PRINT
4 COLORWAYS (SC 16636)



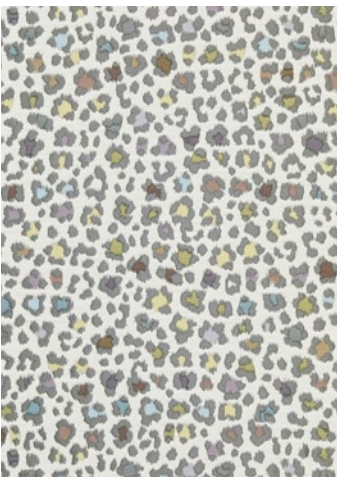
RIAD COTTON PRINT
3 COLORWAYS (SC 16637)



CAIRO TOILE
3 COLORWAYS (SC 16635)



NILE STRIPE
4 COLORWAYS (SC 27253)



ROSETTE WOVEN
2 COLORWAYS (SC 27252)



ARROW STRIPE
4 COLORWAYS (SC 27254)



RIAD WALLCOVERING
2 COLORWAYS (SC WP88508)



LEAPING CHEETAH
WALLCOVERING
6 COLORWAYS (SC WP88449)



ROSETTE WOVEN, CATWALK EMBROIDERY, LEAPING CHEETAH COTTON PRINT, YACK & DIAMOND TABLE LAMP

THE HOUSE OF
Scalamandre

www.scalamandre.com

1.800.932.4361