

# Scalamandre

## PACIFICA

FABRIC, WALLCOVERING & TRIMMING COLLECTION



THE HOUSE OF  
*Scalamandre*

[www.scalamandre.com/pacifica](http://www.scalamandre.com/pacifica)

1.800.932.4361



# PACIFICA

## FABRIC, WALLCOVERING & TRIMMING COLLECTION

Scalamandré presents the Pacifica Collection, a diverse assortment of fabric, wallcovering and trimmings inspired by textile traditions of Indonesia and Japan. Dynamic interpretations of vintage kimono patterns and traditional batik become multi-hued prints, fine sheers, and luxurious velvets. A coordinating selection of embroidered and velvet tapes and cords can be chic accents or statements in their own right. Eclectic and accessible, the Pacifica Collection draws on the beauty of regional textile traditions to evoke global inspiration for today's spaces, passports not required!



WALLCOVERING: SEA OF TREES. DRAPERY: SORA SHEER. PILLOW: SEA OF TREES.  
UPHOLSTERY: HAIKU WEAVE WITH VELVET ROPE CORD.





DRAPERY: SEA OF TREES. UPHOLSTERY: HAIKU WEAVE WITH VELVET ROPE CORD.





DRAPERY: ANISSA PRINT. PILLOW: MAZE VELVET. UPHOLSTERY: RISA WEAVE WITH VELVET ROPE CORD AND RUNWAY VELVET TAPE.





DRAPERY: ANISSA PRINT. LOVE SEAT UPHOLSTERY: HAIKU WEAVE WITH OBI CORD. THROW PILLOWS: MAZE VELVET. LUMBAR PILLOW: PRISMA VELVET. CHAIR UPHOLSTERY: RISA WEAVE WITH VELVET ROPE CORD AND RUNWAY VELVET TAPE.





DRAPERY: HANA EMBROIDERY AND SORA SHEER.





DRAPERY: SATOMI HAND BLOCK PRINT WITH PARQUET VEVLET TAPE.  
PILLOWS: RISA WEAVE WITH OBI CORD AND HANA EMBROIDERY WITH BOULEVARD CORD. BENCH UPHOLSTERY: RIVA MOIRÉ.





BEDHANGING: ANISSA PRINT. HEADBOARD: HAIKU WEAVE WITH OBI CORD.  
BACK PILLOW: DIAMANTE MATELASSÉ WITH CITRA BLOCK PRINT TAPE.  
FRONT PILLOW: MAZE VELVET. DUVET: DIAMANTE MATELASSÉ.





FRONT PILLOW: MAZE VELVET. BACK PILLOW: DIAMANTE MATELASSÉ WITH CITRA BLOCK PRINT TAPE.





REINA SHEER





KIMONOS: FARRAH PRINT. BELTS: SAYURI EMBROIDERED TAPE. CUFFS: PARQUET VELVET TAPE.



# Scalamandré

## PACIFICA FABRIC & WALLCOVERING



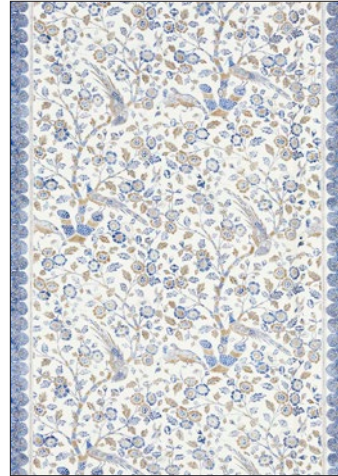
SATOMI HAND  
BLOCK PRINT

3 COLORWAYS (SC 16624)



FARRAH PRINT

4 COLORWAYS (SC 16626)



ANISSA PRINT

4 COLORWAYS (SC 16625)  
SHOWN FULL WIDTH



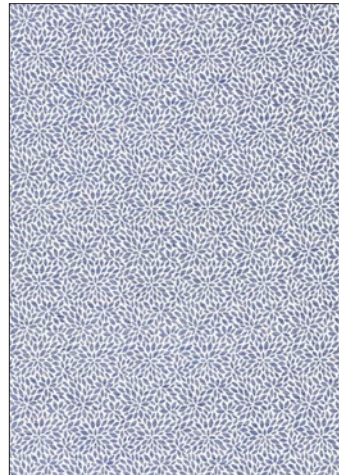
SEA OF TREES

3 COLORWAYS (SC 16627)



MAZE VELVET

4 COLORWAYS (SC 27237)



RISA WEAVE

4 COLORWAYS (SC 27239)



PRISMA VELVET

3 COLORWAYS (SC 27238)



HANA EMBROIDERY

3 COLORWAYS (SC 27233)



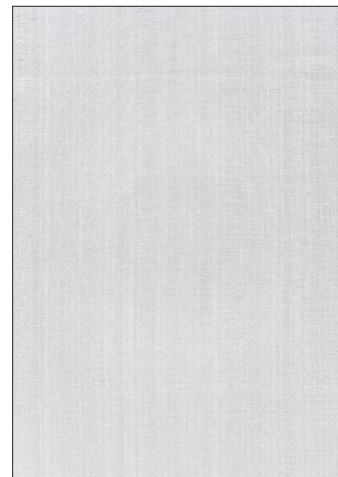
HAIKU WEAVE

5 COLORWAYS (SC 27240)



REINA SHEER

2 COLORWAYS (SC 27234)



SORA SHEER

3 COLORWAYS (SC 27236)



SEA OF TREES  
WALLCOVERING

3 COLORWAYS (SC WP8853)



*Scalamandré*

PACIFICA  
TRIMMINGS



SAYURI  
EMBROIDERED TAPE  
5 COLORWAYS (SC T3324)



TULSI BLOCK  
PRINT TAPE  
4 COLORWAYS (SC T3328)



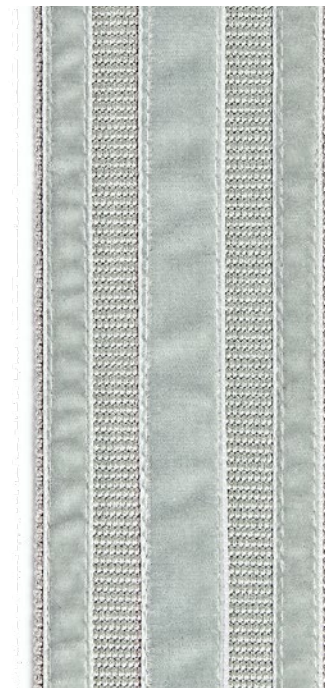
CITRA BLOCK  
PRINT TAPE  
4 COLORWAYS (SC T3327)



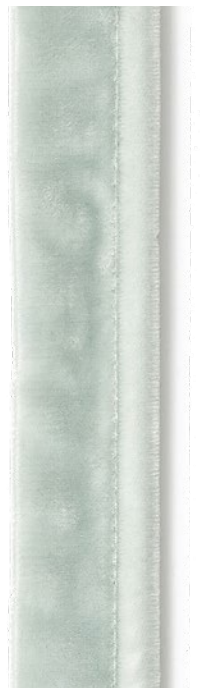
OBI CORD  
8 COLORWAYS (SC C317)



PARQUET VELVET TAPE  
5 COLORWAYS (SC T3326)



RUNWAY VELVET TAPE  
6 COLORWAYS (SC T3325)



VELVET  
ROPE CORD  
6 COLORWAYS (SC C316)





OTTOMAN UPHOLSTERY: HAIKU WEAVE WITH SAYURI EMBROIDERED TAPE AND BOULEVARD CORD. DRAPERY: HANA EMBROIDERY AND SORA SHEER.



*Scalamandré*

PACIFICA  
PILLOWS



MAZE VELVET PILLOW  
4 COLORWAYS (SC MAZEPILL)



HAIKU WEAVE  
BOLSTER PILLOW  
5 COLORWAYS (SC BHAIKPILL)



SEA OF TREES PILLOW  
3 COLORWAYS (SC SEAOTPILL)



RISA WEAVE  
BOLSTER PILLOW  
4 COLORWAYS (SC BRISAPILL)



ANISSA PRINT PILLOW  
4 COLORWAYS (SC ANISPILL)



MAZE VELVET  
LUMBAR PILLOW  
4 COLORWAYS (SC LMAZEPILL)



FARRAH PRINT  
LUMBAR PILLOW  
4 COLORWAYS (SC LFARRPILL)



PRISMA VELVET  
PILLOW  
3 COLORWAYS (SC PRISMPILL)



SATOMI HAND  
BLOCK PRINT PILLOW  
3 COLORWAYS (SC SATOPILL)



PRISMA VELVET  
PILLOW  
3 COLORWAYS (SC LPRISMPILL)



MAZE VELVET  
BOLSTER PILLOW  
4 COLORWAYS (SC BMAZEPILL)



FARRAH PRINT  
PILLOW  
4 COLORWAYS (SC FARRPILL)





DRAPERY: SEA OF TREES. UPHOLSTERY: PRISMA VELVET  
BENCH CONTRAST CORD: VELVET ROPE CORD.

THE HOUSE OF  
*Scalamandre*

[www.scalamandre.com/pacifica](http://www.scalamandre.com/pacifica)

1.800.932.4361