

# Scalamandré

## CONTRACT

FUNDAMENTALS  
HIGH-PERFORMANCE FABRIC COLLECTION



THE HOUSE OF  
*Scalamandré*

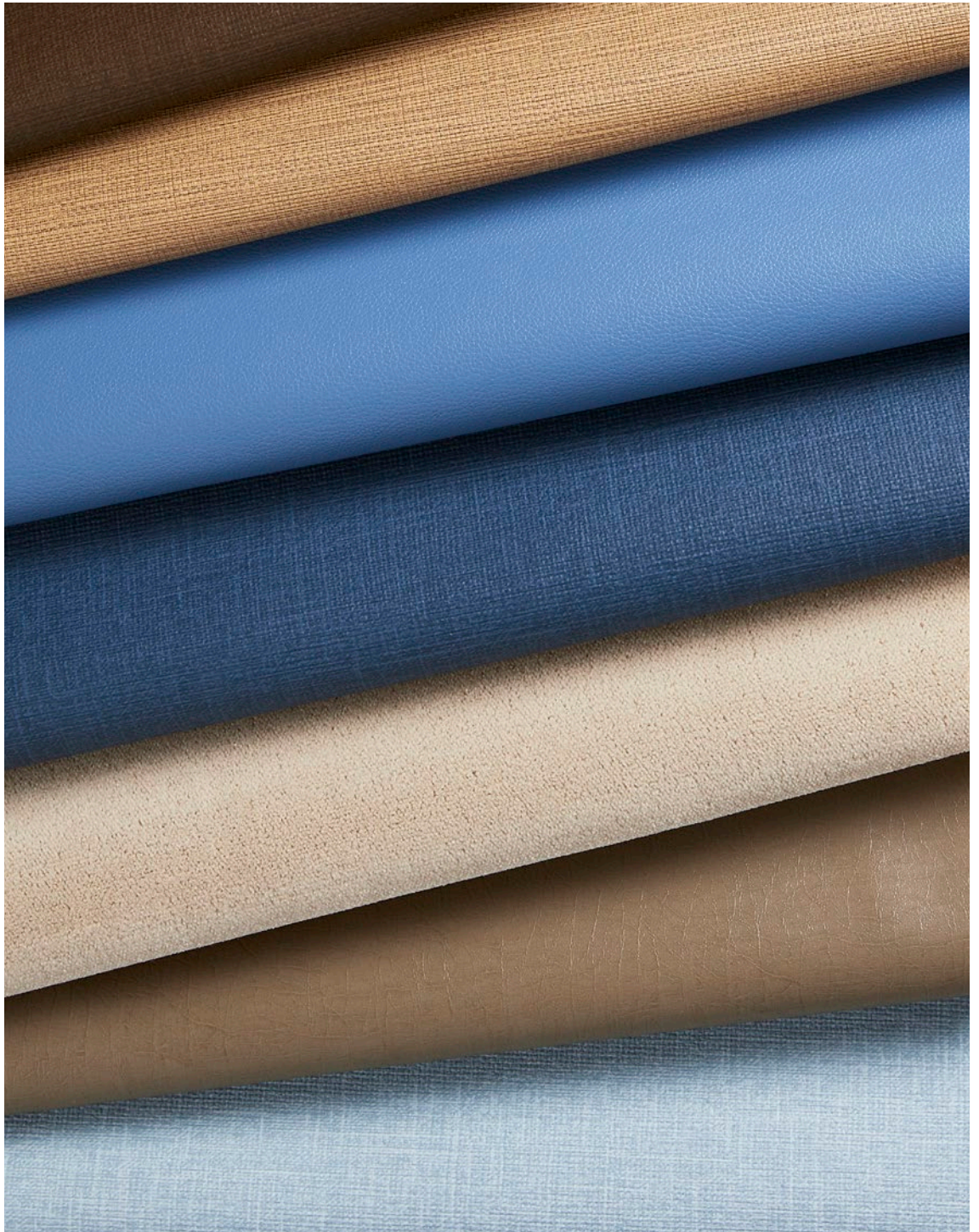
[www.scalamandre.com/fundamentals](http://www.scalamandre.com/fundamentals)

1.800.932.4361

# FUNDAMENTALS

## HIGH-PERFORMANCE FABRIC COLLECTION

A resource library including over 200 SKUs of high-performance upholstery fabric ideal for commercial, hospitality and residential projects. These high-abrasion, FR-rated, value-driven performance plains and textures are available in a comprehensive palette, from neutrals to earth tones to saturated hues. From leather-inspired looks to faux mohair velvet, the Fundamentals Collection is stocked, easy-to-use and beautifully complements the decorative side of Scalamandré.





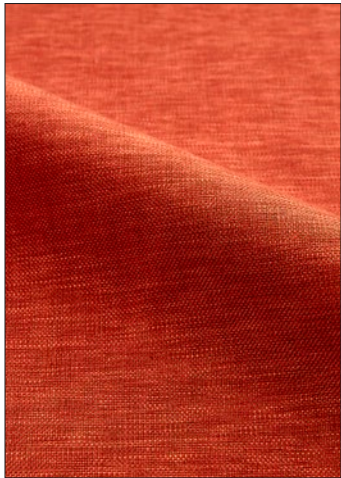
ALSO FEATURED: SAVANNA SEEDLING VINYL TYPE II WALLCOVERING



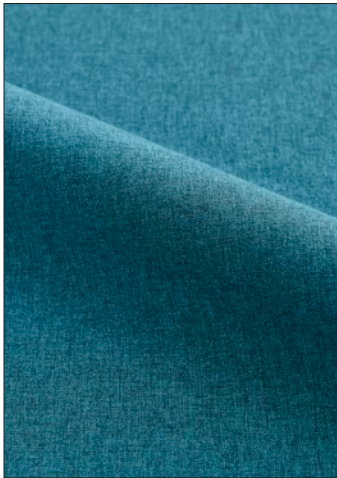
COMMON PAPER CONVERSION  
INCH RISE / FOOT = DEGREES

1=4.75	10=40.00	17=84.75
2=9.50	11=42.50	18=89.25
3=14.25	12=45.00	19=93.75
4=19.00	13=47.50	20=98.00
5=23.75	14=50.00	
6=28.50	15=52.50	
7=33.25	16=55.00	
8=38.00	17=57.50	
9=42.75	18=60.00	
10=47.50	19=62.50	
11=52.25	20=65.00	
12=57.00		
13=61.75		
14=66.50		
15=71.25		
16=76.00		
17=80.75		
18=85.50		
19=90.25		
20=95.00		
21=99.75		
22=104.50		
23=109.25		
24=114.00		
25=118.75		
26=123.50		
27=128.25		
28=133.00		
29=137.75		
30=142.50		
31=147.25		
32=152.00		
33=156.75		
34=161.50		
35=166.25		
36=171.00		
37=175.75		
38=180.50		
39=185.25		
40=190.00		
41=194.75		
42=199.50		
43=204.25		
44=209.00		
45=213.75		
46=218.50		
47=223.25		
48=228.00		
49=232.75		
50=237.50		
51=242.25		
52=247.00		
53=251.75		
54=256.50		
55=261.25		
56=266.00		
57=270.75		
58=275.50		
59=280.25		
60=285.00		
61=289.75		
62=294.50		
63=299.25		
64=304.00		
65=308.75		
66=313.50		
67=318.25		
68=323.00		
69=327.75		
70=332.50		
71=337.25		
72=342.00		
73=346.75		
74=351.50		
75=356.25		
76=361.00		
77=365.75		
78=370.50		
79=375.25		
80=380.00		
81=384.75		
82=389.50		
83=394.25		
84=399.00		
85=403.75		
86=408.50		
87=413.25		
88=418.00		
89=422.75		
90=427.50		
91=432.25		
92=437.00		
93=441.75		
94=446.50		
95=451.25		
96=456.00		
97=460.75		
98=465.50		
99=470.25		
100=475.00		

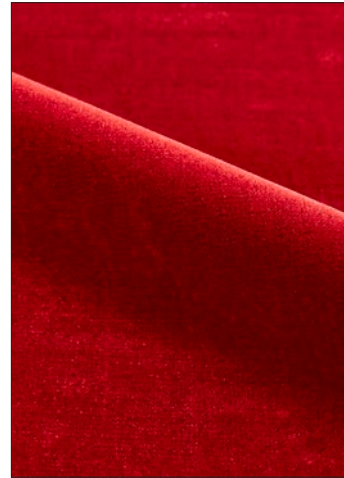
FUNDAMENTALS  
HIGH-PERFORMANCE FABRIC COLLECTION



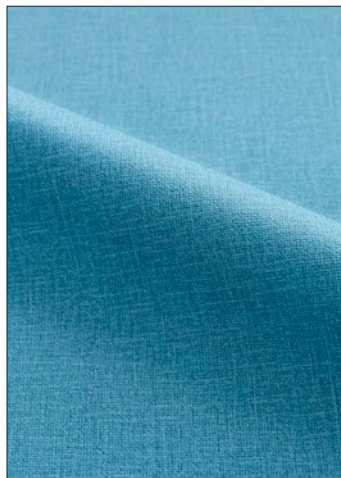
ORSON - UNBACKED  
58 COLORWAYS (SC 27266)



SUZANNE  
24 COLORWAYS (SC 27260)



PORTER  
21 COLORWAYS (SC 27259)



KATHARINE  
25 COLORWAYS (SC 27262)



LAUREN  
19 COLORWAYS (SC 27264)



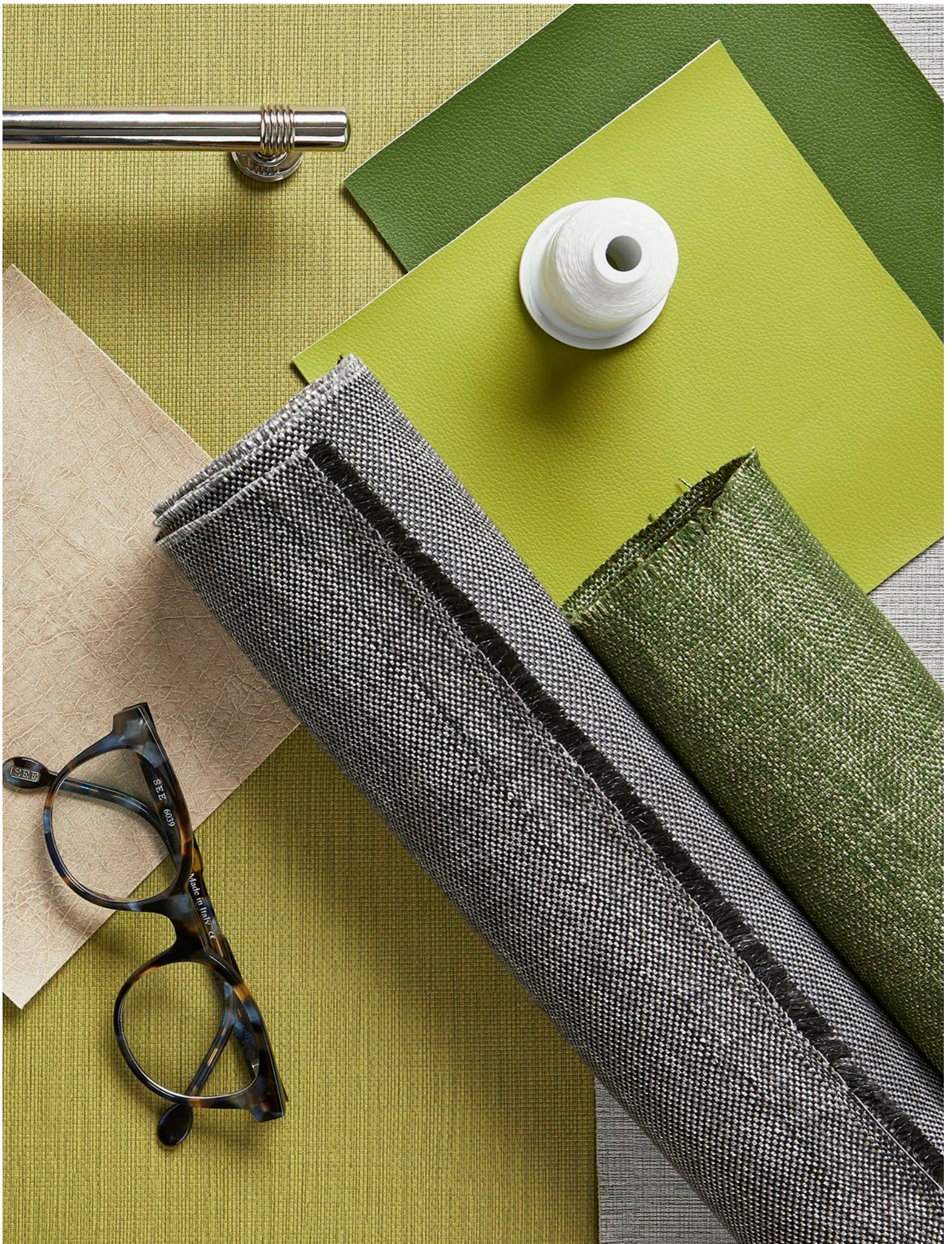
CARY  
10 COLORWAYS (SC 27261)



CLARK - OUTDOOR  
44 COLORWAYS (SC 27263)



LUCILLE - OUTDOOR  
14 COLORWAYS (SC 27258)



# ORSON

WOVEN TEXTURE - 100% POLYESTER

UNBACKED SC 27266 - 58 COLORWAYS



Orson's expansive color palette and balanced plain weave texture make for an effortless upholstery fabric. This library staple can coordinate with any multi-color woven or print.

**CONTRACT / HIGH-PERFORMANCE PROPERTIES INCLUDE:**

- 200,000 Wyzenbeek
- Anti-Stain Treatment
- Lightfastness Grey Scale: CLASS 4/1,500 Hours
- Orson - Unbacked: NFPA 701

Contact your sales representative or customer service to order Orson - Backed.



# SUZANNE

WOOL-INSPIRED - 100% POLYESTER

SC 27260 - 24 COLORWAYS



Heathered yarns and a brushed finish create Suzanne's cozy, wool-inspired look. This tactile polyester woven is as durable and inviting in a family room as it is in a hotel lobby.

**CONTRACT / HIGH-PERFORMANCE PROPERTIES INCLUDE:**

- 174,000 Wyzenbeek
- NFPA 260, CAL 117, ASTM D 4157-13
- Anti-Stain Treatment









# PORTER

FAUX MOHAIR - 100% POLYESTER

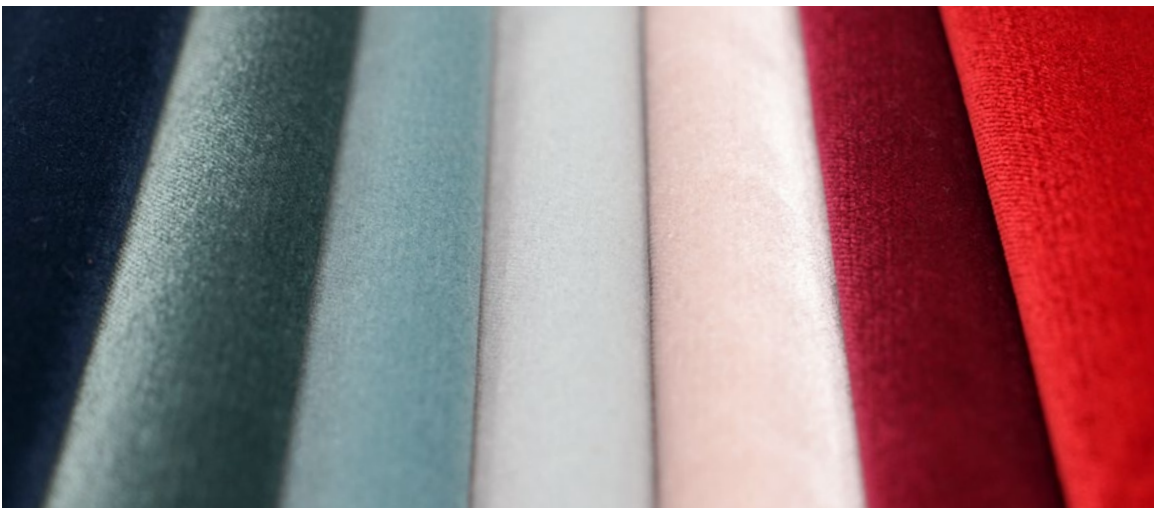
SC 27259 - 21 COLORWAYS

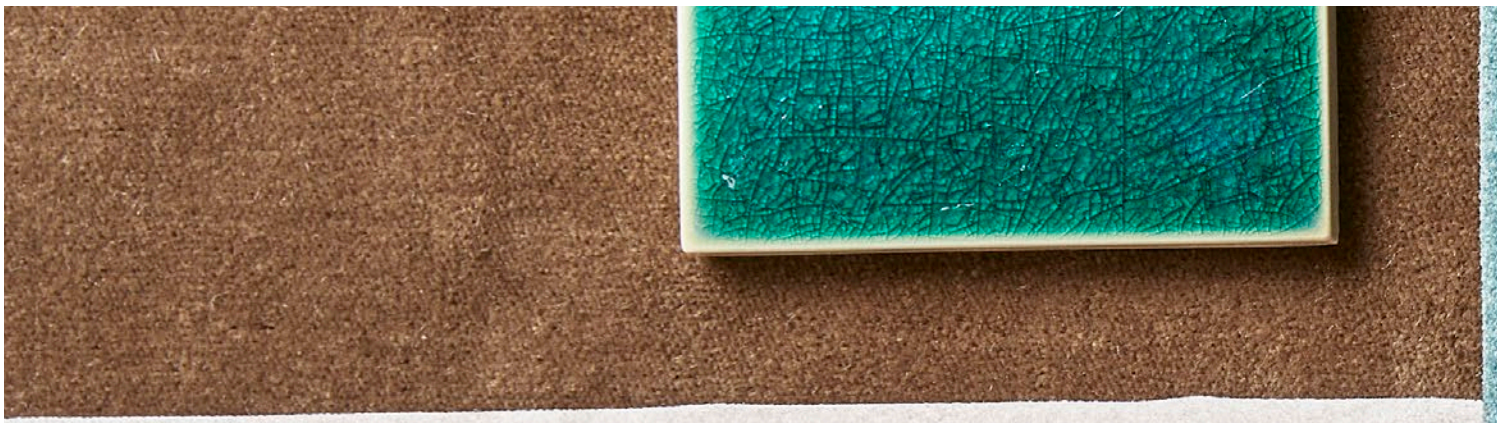


Boasting 300,000 double rubs, Porter is an exceptional mohair velvet look-a-like perfect for heavy-duty upholstery. The close-textured polyester pile has a supple hand and luxurious drape. Available in a sophisticated, nature-inspired color palette.

**CONTRACT / HIGH-PERFORMANCE PROPERTIES INCLUDE:**

- 300,000 Wyzenbeek
- UFAC/NFPA 260-CLASS I
- Anti-Stain Treatment









# KATHARINE

TEXTURE - 100% POLYESTER

SC 27262 - 25 COLORWAYS



A combination of print and embossing creates Katharine's subtle, two-toned texture and matte finish. From restaurant seating to a kitchen banquette, this heavy-duty upholstery fabric offers the look of a woven textile with the durability of vinyl.

**CONTRACT / HIGH-PERFORMANCE PROPERTIES INCLUDE:**

- 100,000 Wyzenbeek
- UFAC/NFPA 260-CLASS I
- Washable & Bleach Cleanable



# LAUREN

TEXTURED STRIÉ - 95% POLYURETHANE & 5% SILICONE

SC 27264 - 19 COLORWAYS



A fine vertical strié effect creates movement and dimension over the surface of Lauren. With a light reflective sheen, this go-to upholstery fabric is ideal for high traffic areas.

**CONTRACT / HIGH-PERFORMANCE PROPERTIES INCLUDE:**

- 200,000 Wyzenbeek
- UFAC/NFPA 260-CLASS I
- Washable & Bleach Cleanable
- Colorfastness to Wet/Dry Crocking-AATCC8





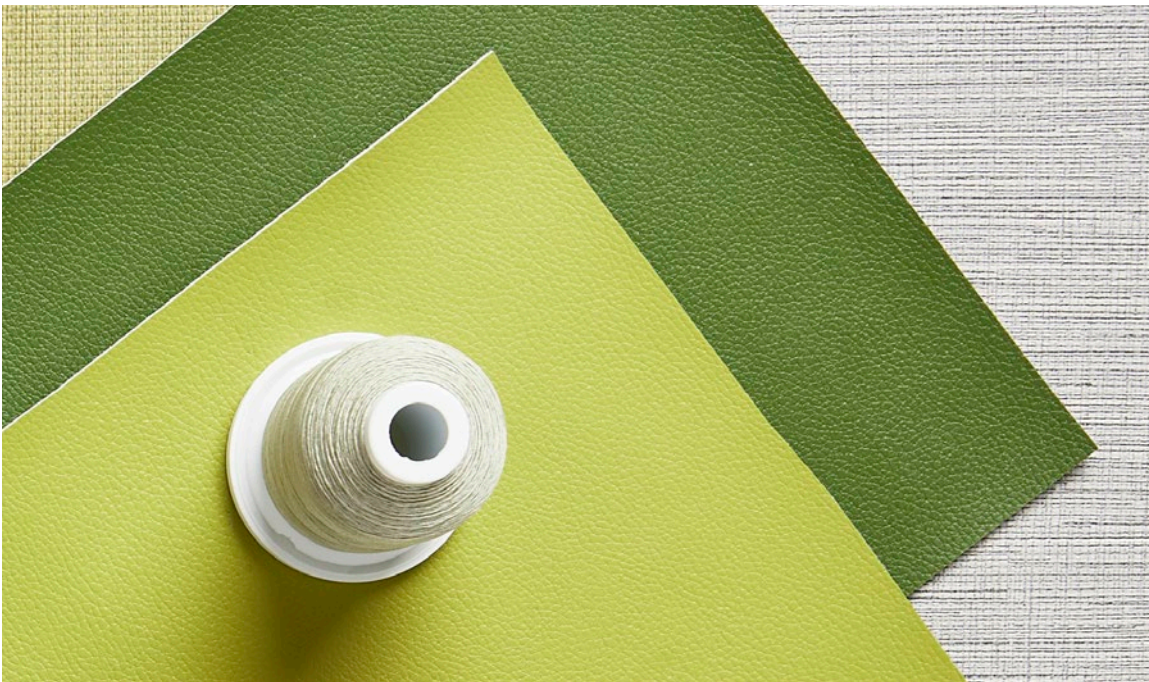




# CLARK - OUTDOOR

FINE PEBBLED FAUX LEATHER - 100% SILICONE

SC 27263 - 44 COLORWAYS

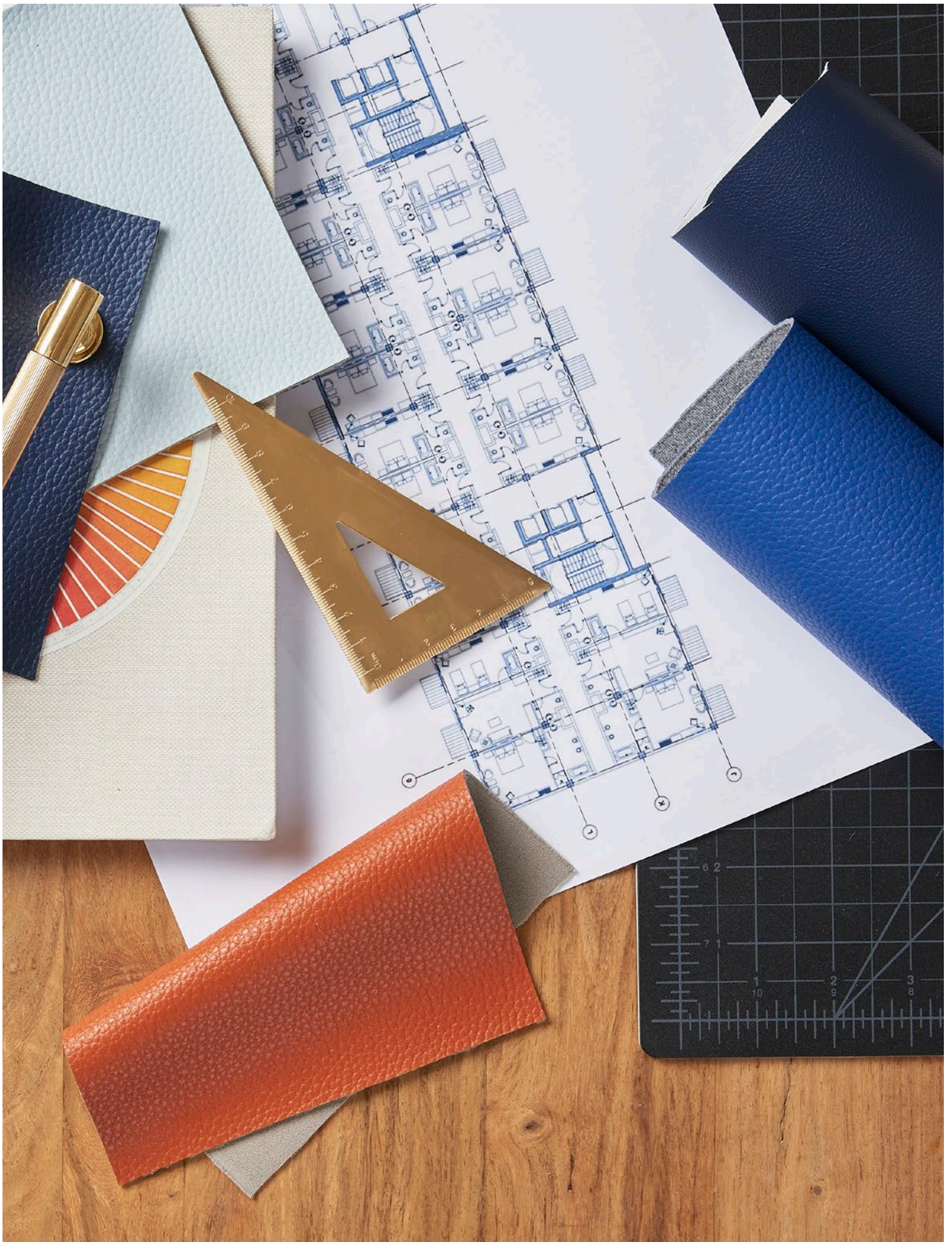


Composed of 100% silicone with a polyester backing, this fine pebbled faux leather is ideal for both indoor and outdoor use. With a supple hand and fine embossing, Clark - Outdoor offers a breadth of attributes needed for contract specification, including:

- 200,000 Wyzenbeek
- UFAC/NFPA 260 Class I
- Colorfastness to Wet/Dry Crocking-AATCC8
- Lightfastness 1,500 hours-Grade 5 ASTM D 4329
- IMO Certified
- Washable & Bleach Cleanable
- Indoor/Outdoor

In addition to surpassing standards for durability, silicone boasts a range of environmentally sophisticated properties, including:

- Inherently anti-fungal, anti-mildew and doesn't support microbiological growth
- No PVCs or solvents
- Complies with California Section 01350 VOC Emission Standards for safer indoor air quality
- Odorless
- Qualifies for LEED v4 points



# LUCILLE - OUTDOOR

PEBBLED FAUX LEATHER - 100% SILICONE

SC 27258 - 14 COLORWAYS



Composed of 100% silicone with a polyester backing, this pebbled faux leather is ideal for both indoor and outdoor use. With a supple hand and fine embossing, Lucille - Outdoor offers a breadth of attributes needed for contract specification, including:

- 150,000 Wyzenbeek
- UFAC/NFPA 260 Class I
- Colorfastness to Wet/Dry Crocking-AATCC8
- Lightfastness 1,500 hours-Grade 5 ASTM D 4329
- IMO Certified
- Washable & Bleach Cleanable
- Indoor/Outdoor

In addition to surpassing standards for durability, silicone boasts a range of environmentally sophisticated properties, including:

- Inherently anti-fungal, anti-mildew and doesn't support microbiological growth
- No PVCs or solvents
- Complies with California Section 01350 VOC Emission Standards for safer indoor air quality
- Odorless
- Qualifies for LEED v4 points

# CARY

FAUX LEATHER – 95% POLYURETHANE & 5% SILICONE

SC 27261 – 10 COLORWAYS



With fine embossing and a light sheen, Cary captures the feel of distressed leather in a range of easy neutrals. This timeless fabric is an ideal, contract-grade “vegan” substitute for animal hide.

**CONTRACT / HIGH-PERFORMANCE PROPERTIES INCLUDE:**

- 200,000 Wyzenbeek
- UFAC/NFPA 260-CLASS I
- Washable & Bleach Cleanable
- Colorfastness to Wet/Dry Crocking-AATCC8







ALSO FEATURED: MARLY VINYL TYPE I - FR WALLCOVERING

THE HOUSE OF  
*Scalamandre*

[www.scalamandre.com/fundamentals](http://www.scalamandre.com/fundamentals)

1.800.932.4361