



JAMES HARE
SINCE 1865

GARDYNE

FABRIC COLLECTION



THE HOUSE OF
Scalamandre

www.scalamandre.com/james-hare-gardyne

1.800.932.4361

GARDYNE

FABRIC COLLECTION

Named after the old English word for garden. Gardyne encapsulates the charm and character of a Tudor English garden, bringing warmth and personality to an interior. This enchanting, matte collection boasts a combination of embroidered, printed and jacquard fabrics. Statement designs are perfected with intricate and sophisticated stitching that emulates hand needlework, including the French knot technique. Shades of blue, green and terracotta are complemented by tasteful neutrals to ensure that this collection will flow seamlessly, while a choice of simple or dramatic trims enable you to create a refined finishing touch. Lismore, a plain linen, is introduced in a selection of calming colors and has been designed to perfectly coordinate with the decorative range.

Allow Gardyne to bring a delightful, cozy and unique style to your home.



Cover: SOFA UPHOLSTERY: ARBOUR.
STOOL UPHOLSTERY BEAUCHAMP
VELVET: THROW PILLOWS: KNOT
GARDEN, BEAUCHAMP VELVET &
LISMORE LINEN WITH TUDOR BRAID.

ELIZABETH, GARDYNE & LISMORE LINEN WITH BRUSH FRINGE.



LISMORE LINEN AND RIBBON TRIM



ELIZABETH



ELIZABETH, HAMPTON, GARDYNE & LISMORE LINEN WITH BRUSH FRINGE.



ELIZABETH & GARDYNE



KNOT GARDEN, GARDYNE, LISMORE LINEN WITH TUDOR BRAID & RIBBON TRIM



MEANDER, GARDYNE, LISMORE LINEN WITH BRUSH FRINGE.



ARBOUR, LISMORE LINEN WITH TUDOR BRAID, BEAUCHAMP VELVET, KNOT GARDEN, LISMORE LINEN & TUDOR BRAID.

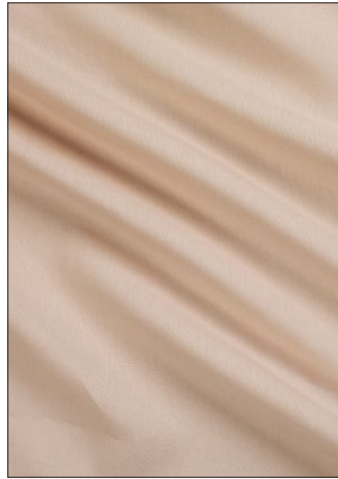


LISMORE LINEN WITH TUDOR BRAID & RIBBON TRIM

GARDYNE FABRIC



ELIZABETH
2 COLORWAYS (31654)



LISMORE LINEN
24 COLORWAYS (31658)



KNOT GARDEN
3 COLORWAYS (31659)



MEANDER
2 COLORWAYS (31656)



ARBOUR
4 COLORWAYS (31655)



HAMPTON
1 COLORWAY (31660)



GARDYNE
5 COLORWAYS (31657)



GARDYNE, LISMORE LINEN & ELIZABETH

THE HOUSE OF
Scalamandre

www.scalamandre.com/james-hare-gardyne

1.800.932.4361