

HINSON

BREEZE PERFORMANCE FABRIC COLLECTION



HINSON

BREEZE PERFORMANCE

FABRIC COLLECTION

Hinson introduces BREEZE PERFORMANCE, a lively collection of high-performance prints, yarn-dyed stripes and patterned weaves. Suitable for indoor and outdoor use, these fabrics feature superb lightfastness, durability, stain resistance and cleanability. Clear and complementary palettes offer a colorful array of decorative options for modern interior and exterior settings.



COVER: HINSON PALM OUTDOOR, CHARTER STRIPE, IKAT DIAMOND AND SUMMER STRIPE.
THIS PAGE: HIGH TIDE WITH ZIG ZAG CORD.



CHARTER STRIPE, CORAL CAY, TOPSAIL STRIPE, LATTICE WITH TORTOLA TWISTED CORD, TESSERA, VERDANCE AND SUMMER STRIPE.

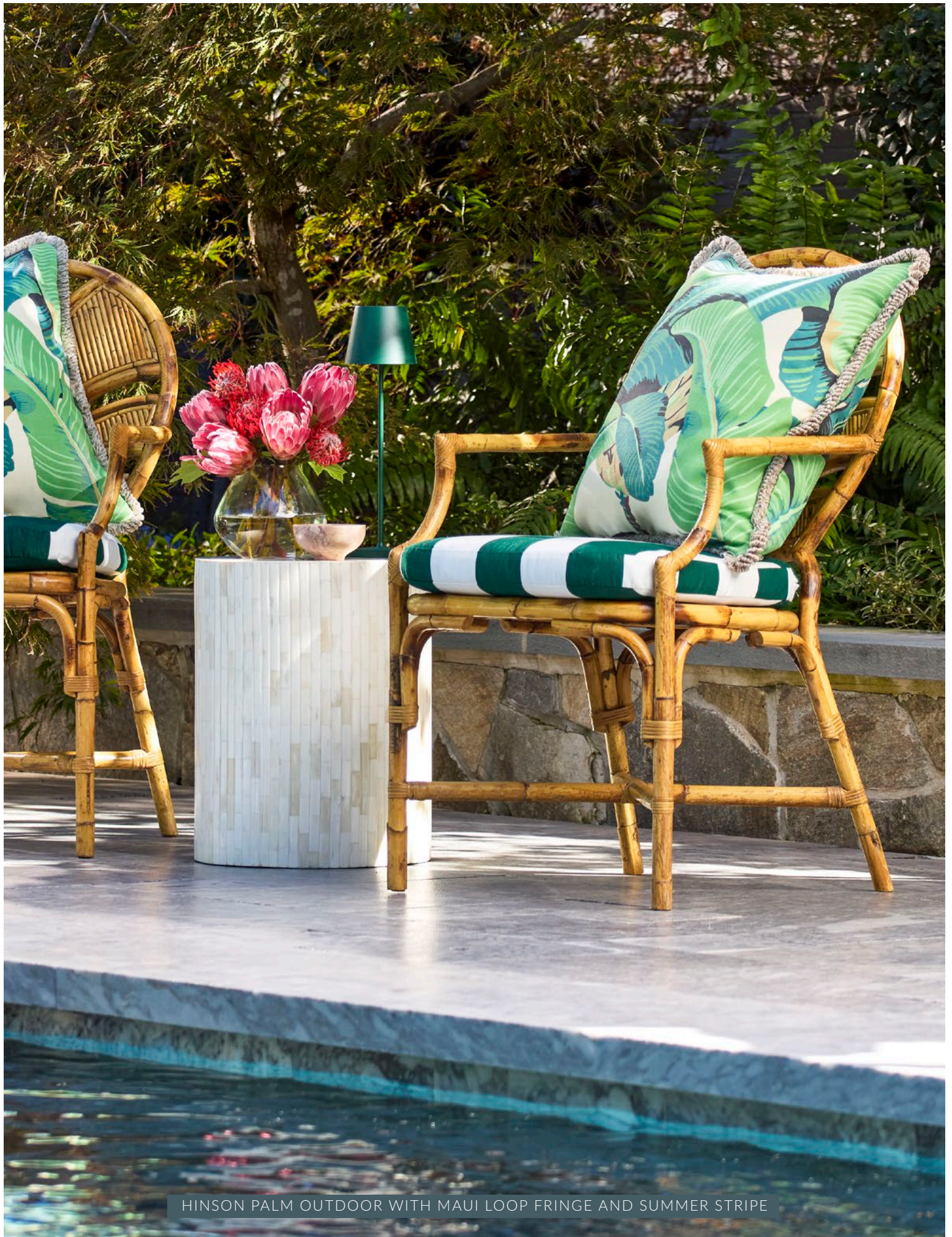




SEASIDE STRIPE AND CORAL CAY.



HIGH TIDE AND SEASIDE STRIPE WITH TORTOLA TWISTED CORD



HINSON PALM OUTDOOR WITH MAUI LOOP FRINGE AND SUMMER STRIPE



LATTICE WITH TORTOLA TWISTED CORD AND VERDANCE.



IKAT DIAMOND, CHARTER STRIPE, VERDANCE,
OCEANA STRIPE, LATTICE WITH TORTOLA TWISTED CORD.



IKAT DIAMOND, CHARTER STRIPE WITH TORTOLA TWISTED CORD, LATTICE WITH MAUI LOOP FRINGE AND HIGH TIDE WITH ZIG ZAG CORD.

HINSON

BREEZE PERFORMANCE FABRIC COLLECTION



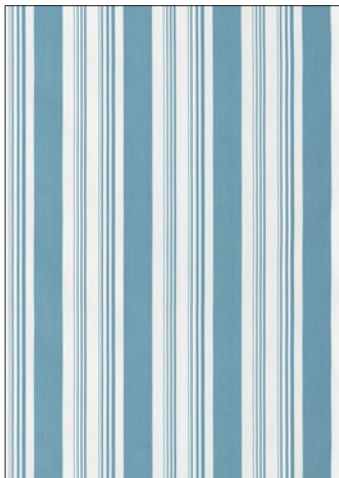
COASTAL STRIPE
2 COLORWAYS (HN 27362)



SEASIDE STRIPE
3 COLORWAYS (HN 27364)



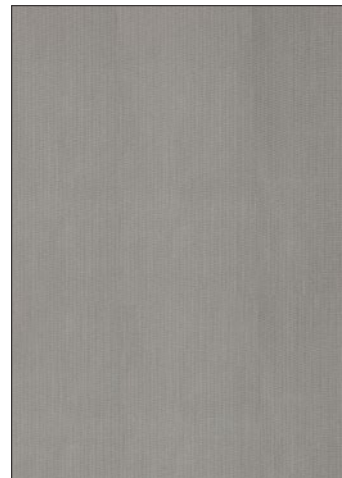
SUMMER STRIPE
6 COLORWAY (HN 27360)



TOPSAIL
4 COLORWAYS (HN 27358)



NEWPORT STRIPE
5 COLORWAYS (HN 27357)



PINSTRIPE
3 COLORWAYS (HN 27356)



OCEANA STRIPE
8 COLORWAYS (HN 27359)



CHARTER STRIPE
5 COLORWAYS (HN 27361)



FIESTA STRIPE
3 COLORWAYS (HN 27363)

HINSON



CHARTER STRIPE WITH TORTOLA TWISTED CORD

Scalamandre