

ALHAMBRA

ETNA FABRIC COLLECTION



THE HOUSE OF
Scalamandre

www.scalamandre.com/alhambra

1.800.932.4361

ETNA

FABRIC COLLECTION

The Mediterranean's largest active volcano, Etna, is the inspiration for the latest Alhambra collection. With its warm, mesa-like appearance, these natural textiles add a desirable and very liveable touch. Easy weaves from raw solids to a linen stripe bring in the best of nature's earthy colorways—like the perfect sunset against a beautiful stretch of sea.

Additional textiles featured are from other Alhambra collections.



Cover:
FURNITURE UPHOLSTERY: URANO.
PILLOWS Left to Right: MIJO
AND CANYAMO.

GIBELLO



DRAPERY: MIJO. FURNITURE UPHOLSTERY: GIBELLO.



CHAIR UPHOLSTERY: AITHOS. TABLE FABRIC: MESINA.



WALL ART: LINO. SOFA AND OTTOMAN CUSHIONS: AITHOS.
PILLOWS LEFT TO RIGHT: MIJO AND AITHOS.



TABLE FABRIC: MESINA. CHAIR UPHOLSTERY: GEA.



DRAPERY: CANYAMO. SOFA SLIP COVER: MESINA.



ROMAN SHADE: CANYAMO. SEAT CUSHION: CATANIA.
PILLOWS: CATANIA AND GIBELLO. CHAIR UPHOLSTERY: GEA. THROW: GIBELLO.



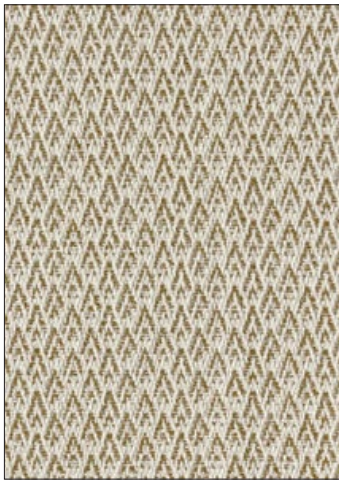
HEADBOARD UPHOLSTERY: CATANIA.
PILLOWS BACK TO FRONT: CATANIA AND MIJO. BLANKET: MIJO.



ROMAN SHADE: FALARIS. CHAIR UPHOLSTERY: GEA. PILLOWS
BACK TO FRONT: GEA AND AITHOS. BLANKETS: CANDELA

ALHAMBRA

ETNA FABRIC COLLECTION



AITHOS
5 COLORWAYS (B8 AITH)



CATANIA
4 COLORWAYS (B8 CATA)



GEA
5 COLORWAYS (B8 GEA)



GIBELLO
5 COLORWAYS (B8 GIBE)



MESINA
2 COLORWAYS (B8 MESI)



MESINA-WIDE WIDTH*
2 COLORWAYS (B8 MESIWW)



URANO
7 COLORWAYS (B8 URAN)



URANO-WIDE WIDTH*
7 COLORWAYS (B8 URANWW)

*DOUBLE WIDTH



SCREEN UPHOLSTERY: URANO. CHAIR UPHOLSTERY: GIBELLO.

THE HOUSE OF
Scalamandre

www.scalamandre.com/alhambra

1.800.932.4361