

# THE FINIAL COMPANY™

## 1 1/8" Metal Traverse



### The perfect modern solution for residential or commercial applications

- Available in 1 1/8" diameter
- Baton draw: center or one-way
- Pinch Pleat or Ripplefold carriers in 60%, 80%, 100% and 120% fullness
- Continuous track available up to 12' in select finish options; splice can be used to achieve longer lengths
- Coordinates with Modern Metal Collection finials and finishes
- Traverse systems include track, brackets, carriers, glides and round end caps. Batons, modern collection finials and cuffs/collars sold separately.
- Cut to your specification. Sold in 2' increments with a 4' minimum (fall off is not saved or shipped).

#### Available Finishes:



CH Chrome



BN Brushed Nickel



SG Satin Gold



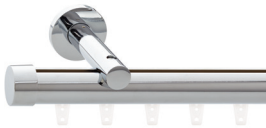
BBN Brushed Black Nickel



MK Matte Black

#### Single Traverse System Wall Mount

wall bracket: 3 1/2" return,  
1 7/8" Dia backplate  
TFCMT118400/SET



wall bracket: 6" return,  
1 7/8" Dia backplate  
TFCMT118401/SET

#### Double Traverse System Wall Mount

wall bracket:  
7 1/2" front and 3"  
back return,  
1 7/8" Dia backplate  
TFCMT118402/SET



#### Single Traverse System Low-Profile Ceiling Mount

ceiling bracket:  
5/32" drop  
TFCMT118406/SET



#### Single Traverse System Ceiling Mount

ceiling bracket:  
2 3/8" drop, 1 7/8" Dia  
ceiling plate  
TFCMT118403/SET



#### Double Traverse System Ceiling Mount

ceiling bracket:  
2 5/8" drop, 4 1/2" apart,  
1 7/8" Dia ceiling plate  
TFCMT118404/SET



#### Traverse Accessories in finishes above:



TFCMT118405  
1 1/8" metal ceiling bracket extender  
2" drop



TFCMT118409  
1 1/8" hinged elbow  
2 7/8" L



TFCMT118407  
connector/splice  
Brass only

#### Batons:

A TFCM312S  
metal  
3/8" Dia, 36" L

TFCM314S  
metal  
3/8" Dia, 48" L

TFCM316S  
metal  
3/8" Dia, 60" L

B ABTN-36  
clear acrylic  
5/8" Dia, 36" L

ABTN-48  
clear acrylic  
5/8" Dia, 48" L



CH BN SG BBN MK  
A B

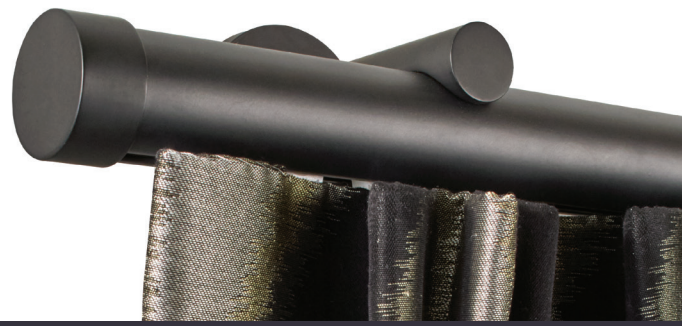
**Installation:** Typically 1 1/8" diameter tracks require two brackets at each end 16" or 24" apart depending on the stud positions, and every 48" apart over remainder of track.

**Estimated Lead Times:** Traverse systems will ship within 5 days of order confirmation.



# THE FINIAL COMPANY™

## 1 3/8" Metal Traverse



### The perfect modern solution for residential or commercial applications

- Available in 1 3/8" diameter
- Baton draw: center or one-way
- Pinch Pleat or Ripplefold carriers in 60%, 80%, 100% and 120% fullness
- Continuous track available up to 12' in select finish options; splice can be used to achieve longer lengths
- Coordinates with 1 3/8" Metal Collection finials and finishes
- Traverse systems include track, brackets, carriers, glides and round end caps. Batons, modern collection finials and cuffs/collars sold separately.
- Cut to your specification. Sold in 2' increments with a 4' minimum (fall off is not saved or shipped).

### Available Finishes:



### Single Traverse System Wall Mount

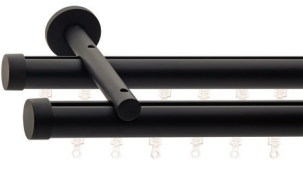
wall bracket: 3 1/2" return, 27/16" Dia backplate  
TFCMT138400/SET

wall bracket: 6" return, 27/16" Dia backplate  
TFCMT138401/SET



### Double Traverse System Wall Mount

wall bracket: 7 1/2" front and 3" back return, 27/16" Dia backplate  
TFCMT138402/SET



### Single Traverse System Low-Profile Ceiling Mount

ceiling bracket: 5/32" drop  
TFCMT138406/SET



### Single Traverse System Ceiling Mount

ceiling bracket: 2 3/8" drop, 1 7/8" Dia ceiling plate  
TFCMT138403/SET



### Double Traverse System Ceiling Mount

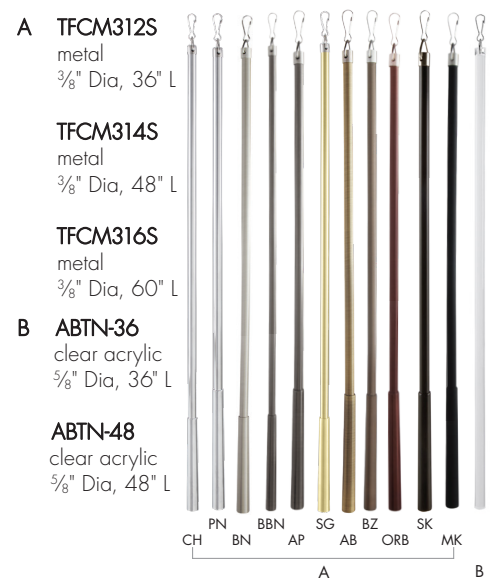
ceiling bracket: 2 5/8" drop, 4 1/2" apart, 1 7/8" Dia ceiling plate  
TFCMT138404/SET



### Traverse Accessories in finishes above:



### Batons:



**Installation:** Typically 1 1/8" diameter tracks require two brackets at each end 16" or 24" apart depending on the stud positions, and every 48" apart over remainder of track.

**Estimated Lead Times:** Traverse systems will ship within 5 days of order confirmation.

