

Upholstered Headboard with Gem Nailheads

Upholstered headboards are easily the star of any bedroom. While our headboard is a traditional center-field with rolled edges, it is updated with modern gem nailheads to add interest and to emphasize the unique, contoured shape.



Upholstered Headboard with Gem Nailheads: Step-By-Step Instructions

Our headboard is 60" wide by 48" tall and is built out on the back to sit flush with the wall. Our custom upholstered headboard is installed using our headboard cleat.

Materials & Supplies

Rowley Products

Pattern Making Paper
Glass Head Straight Pins
Easy Action™ Shears
FirmaFlex™ Bendable Fiber Board
Gem Nailheads
Cardboard Tack Strip - 1/2"
Spray Adhesive
R-TEC Upholstery Air Stapler
R-TEC Upholstery Air Staples - 3/8"
Polyester Batting
Magnetic Tack Hammer with Nylon Tip
R-TEX Medium Welt Cord - 1/4"
R-TEX Black Cambric
Headboard Cleat

Item

[DYC18/](#)
[TP49](#)
[CU10/F](#)
[BP48/](#)
[UN25/](#)
[CS50](#)
[AS30](#)
[NSG10](#)
[NS33/E](#)
[PF78](#)
[MH12](#)
[WC12](#)
[PA40/](#)
[AG76](#)

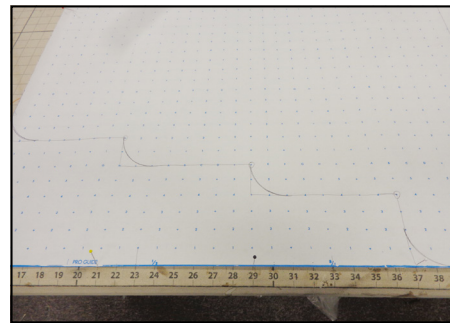
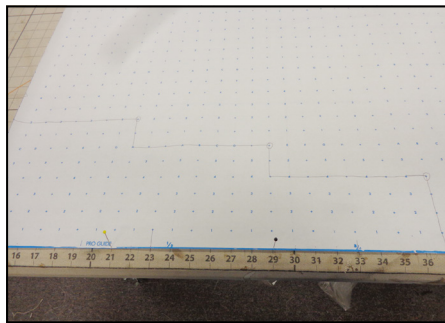
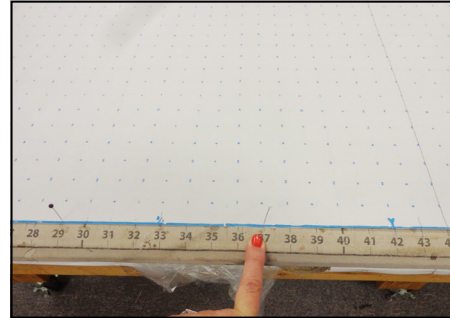
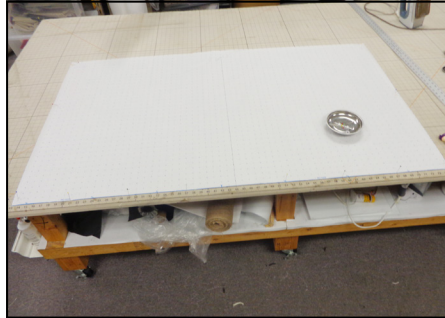
Other Materials

Sharpie Marking Pen
Jig Saw
Box Cutter
1 x 3's
Drywall Screws
Screw Gun with Phillips Bit
Medium Density Foam - 3"
Needle-Nose Pliers

Making the Frame:

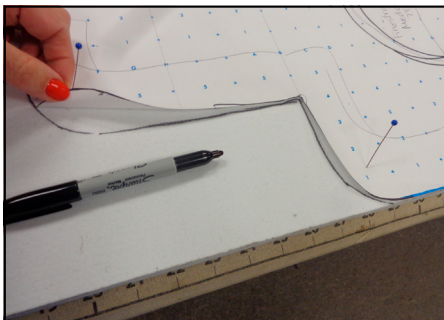
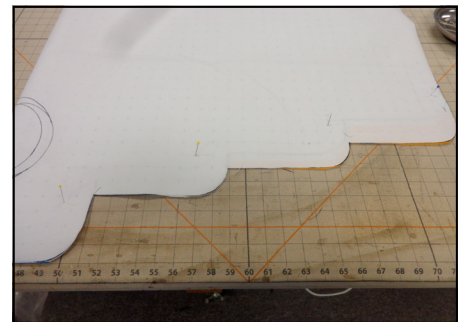
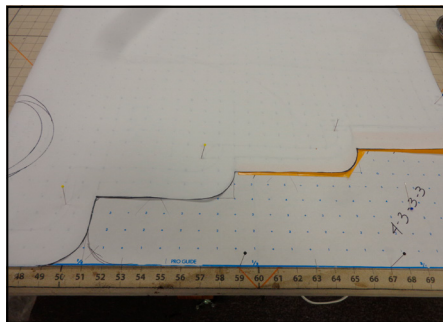
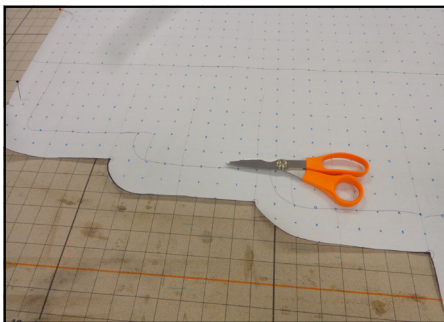
Preparing the Pattern:

- 1 Cut pattern paper to size, making sure it is symmetrical.
- 2 Plot out the spacing for the contours and mark on pattern paper.
- 3 Connect the dots and round off the corners.
- 4 Cut out pattern.



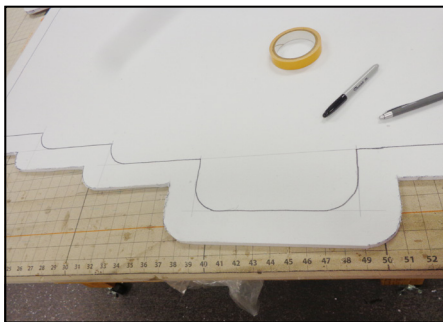
Preparing the Base Frame:

- 1 Lay pattern on FirmaFlex™.
- 2 Trace around pattern and cut out.



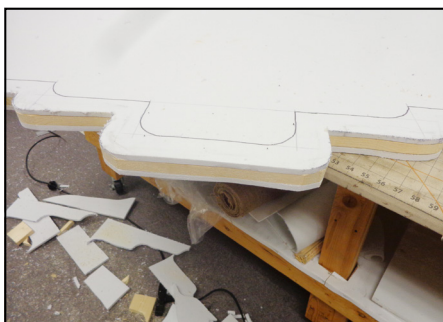
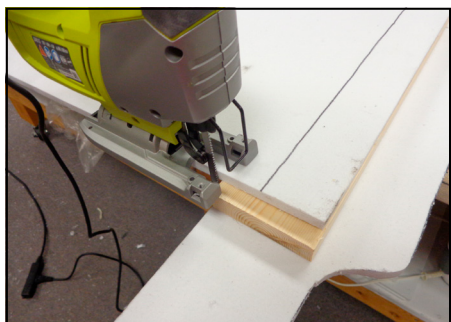
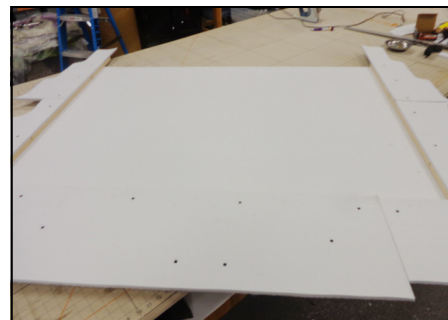
- 3 Lay pattern on face again but this time lay it 3" down from the cut shape.

- 4 Trace around and remove pattern.

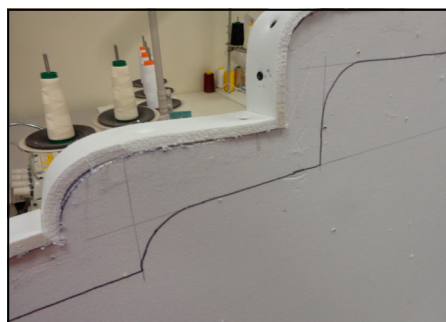
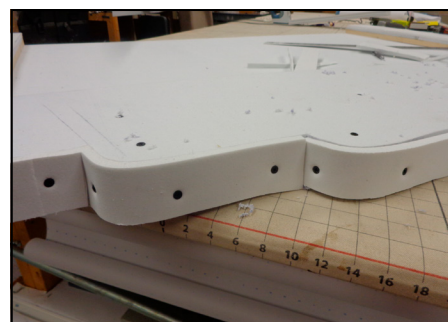
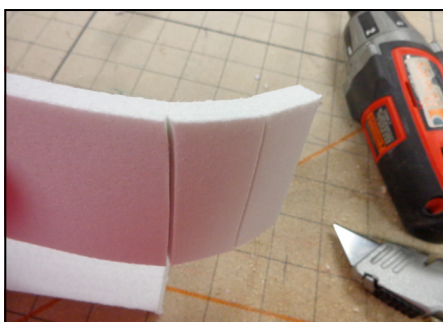


- 5 Add layers of wood to the back so it is built out to the depth needed.
A. We used 1 x 3's for the main layer and then added layers of scrap FirmaFlex™ to build up so the headboard would sit flush on the headboard cleat

- 6 Cut around all added layers to contour shape.

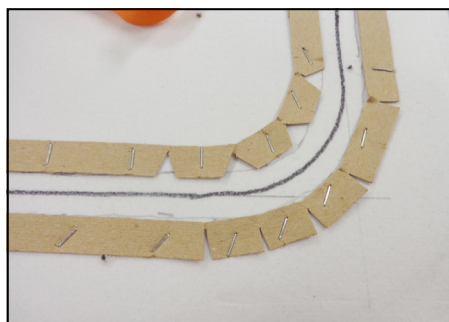
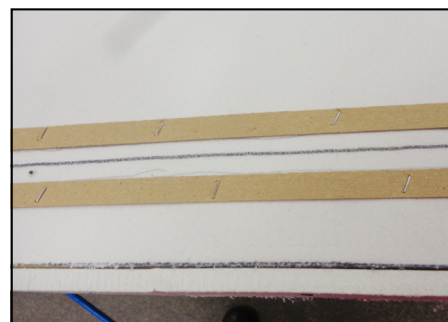
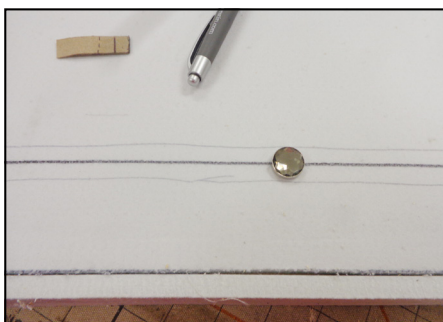
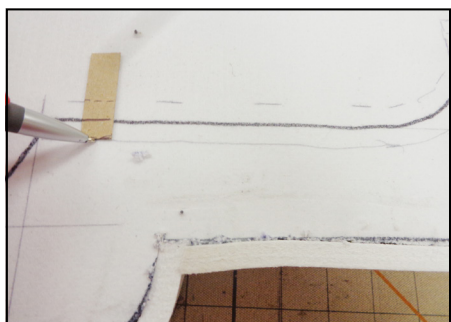
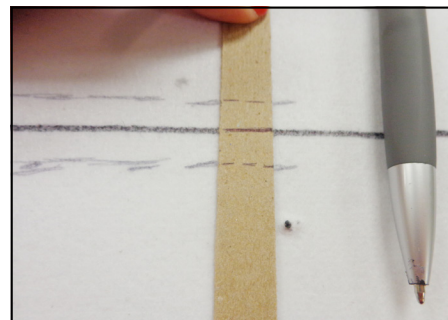
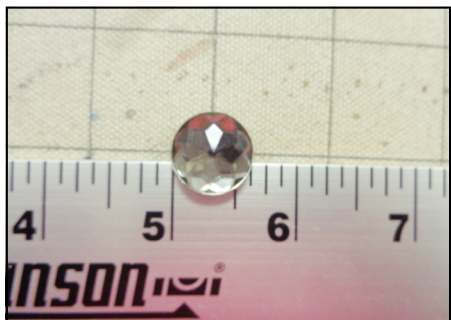


- 7 Add two more side-to-side pieces of wood to add support to the middle and bottom of the headboard.
8 Once you've reached your final depth, add a layer that follows the contour shape to hide all raw edges. This will be done in pieces.

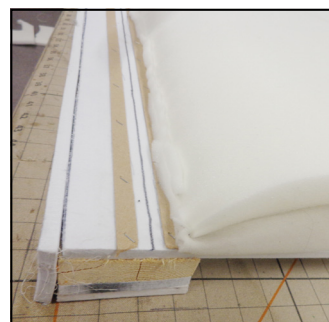
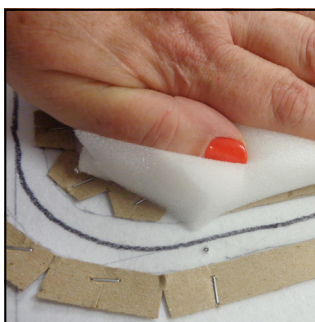


Preparing the Foundation for Padding:

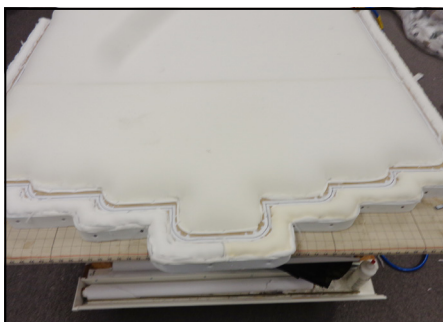
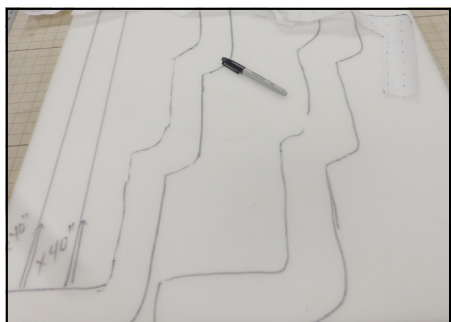
- 1 Measure the nail you will use.
- 2 Measure and mark along the second contour line so the nail sits ON the line.
 - A. We used a piece of cardboard tack strip as a pattern to make the marking go fast.
- 3 Run a row of cardboard tack strip to both outside edges of your nail mark.
 - A. You will need to make relief cuts in the tack strip so it lies flat around the corners.



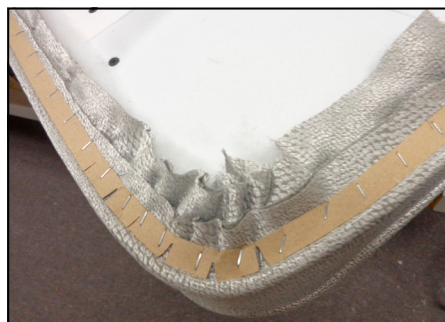
- 4 From the original pattern, cut the foam to shape.
- 5 Lay on front of prepared frame.
- 6 Press down with your hand to depress the foam so it slightly-less-than-covers the tack strip.
- 7 Ant-trail foam in place.



- 8 Cut foam for rolled edge.
- 9 Depress with your hand and ant-trail so it just covers the tack strip.
 - A. The entire ditch you made for the nail should be clear.
 - B. Remember too that you still have to put on batting in this area.



- 10 Cut a layer of batting large enough to cover the entire headboard and still wrap to the back.
- 11 On the front, sparingly staple the ditch.
- 12 Flip the headboard and batting over and finish stapling to the back.
- 13 Remove any excess so the back is relatively smooth and flat.



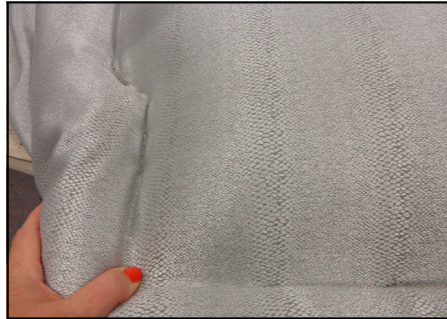
Adding the Fabric:

- 1 Cut and join, if needed, pieces of fabric to cover the entire headboard plus enough for wrapping to the back.
- 2 Place face up on batting and adjust as needed.
- 3 Staple the bottom first, stapling on the back side.
- 4 Smooth "up and out" so fabric is consistently taught; staple in the center of the well.

5

Complete stapling, making relief cuts as needed.

A. You only need to staple up to the ditch at this time. Welt cord and a facing will cover the rest.



Adding the Gem Nailheads:

1

Use a flat ruler to help hold pressure off the ditch.

2

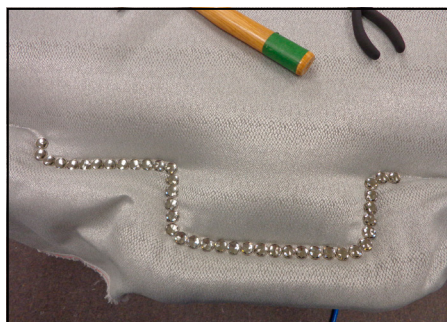
Pound in nails so they sit side by side.

3

Be sure the left side of the headboard matches the right side pattern and number.

4

Complete all nailing.

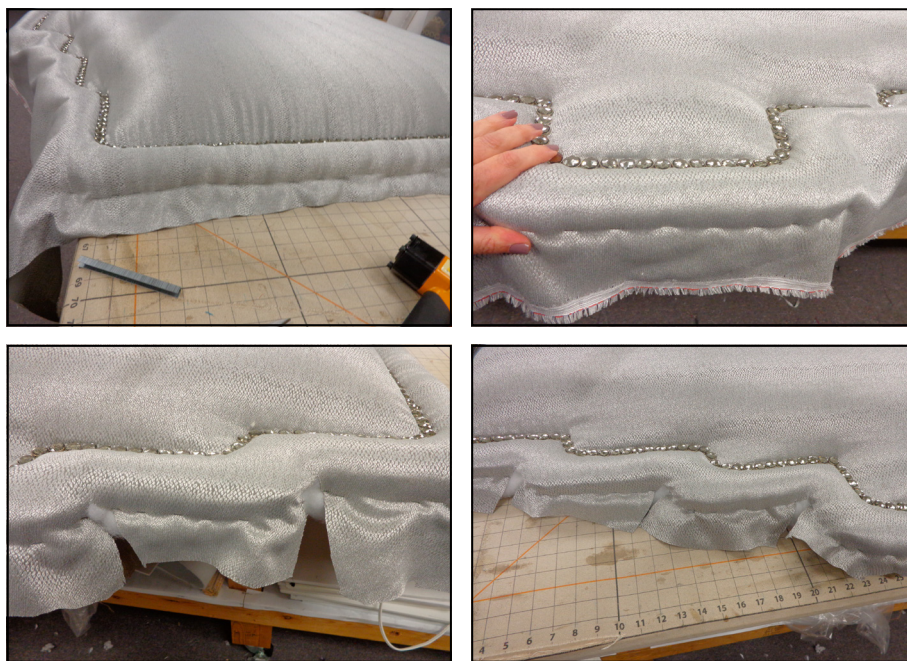


Finishing the Fabric:

1

Pull fabric up and over the rolled edge to the top.

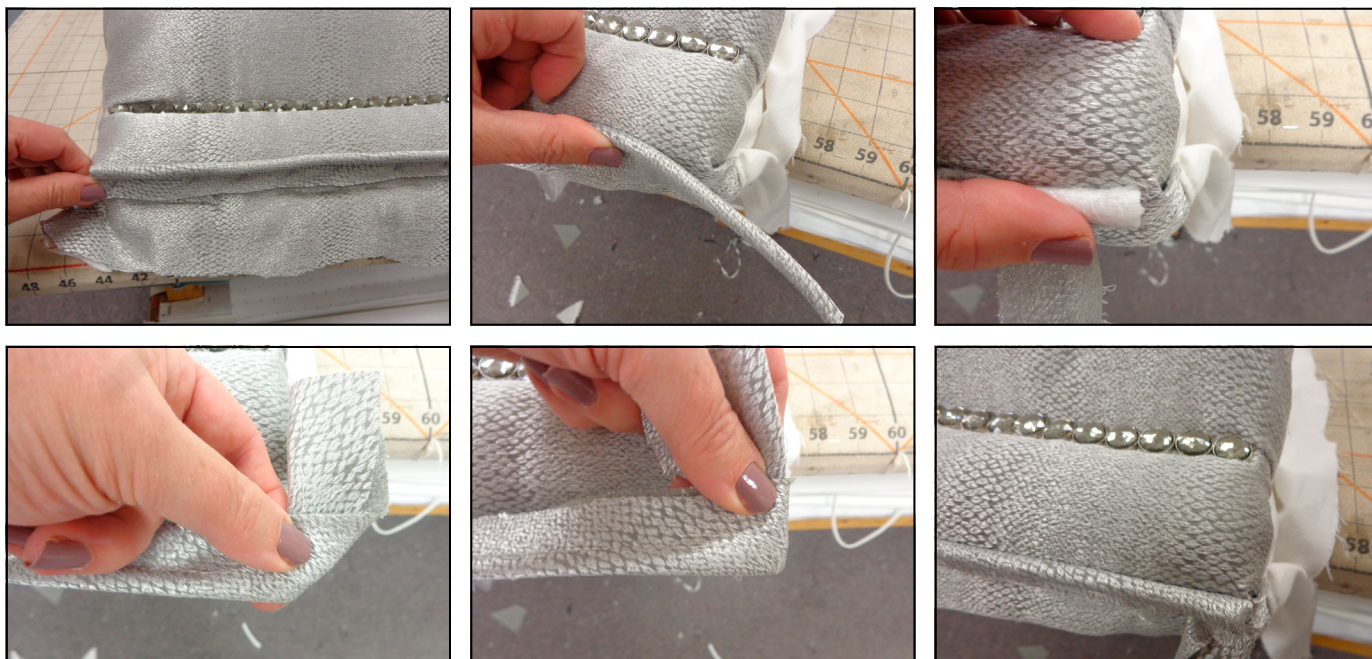
- 2 Staple, making relief cuts as needed.



- 3 Cut and make enough welt cord to go around the outside of the headboard.

- 4 Starting on one bottom, make a good end and staple on welt, following the front curve.

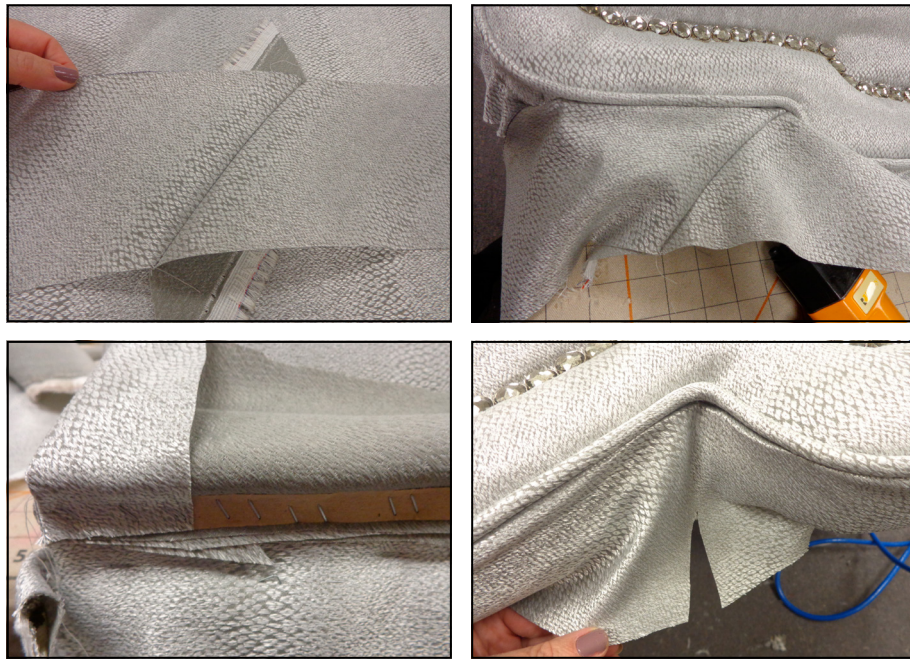
- 5 End on the opposite bottom with a good end.



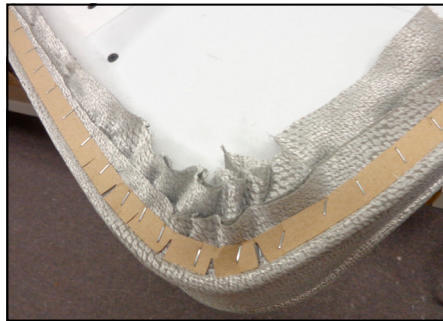
- 6 Cut and make enough bias bands to go around the same area.

- 7 Place banding against welt, right side together and staple, using cardboard tack strip for a tight fit.

- 8 Complete stapling on the banding.



- 9 Pull banding to the back and staple as flat as possible.
- 10 To help keep the welt cord standing up straight, staple on a row of cardboard tack strip tight against the welt, making cuts as needed to go around the corners.



Finishing the Back:

- 1 Staple on a layer of Cambric to cover the back.
 - A. You may need to do this in two pieces.

