

## Rowley project list: **Reverse Mount Hobbled Shade**

A reverse mount shade mounts to the back of a dust board so that the shade sits right against the window. The lift cords route through the front of the shade and then up to the lift system. This style of roman shade requires a valance to cover the lift system. It is a function that works well for inside and outside mount shades. This project guide will cover both the reverse mount hobbled shade and the box pleated valance.



### **MATERIALS & SUPPLIES**

#### **Rowley Products**

Classic Napped Lining  
Medium Weight Interlining  
5/32" Polyester Welt Cord  
Cardboard Tack Strip  
Roman Shade Rings  
Encased Lift Cord Shroud Tape  
Plastic Ribs  
Shade Weight Bar  
Orbs  
Size 0 Grommets  
EZ-Rig Shade System  
Universal Drive Tension Device

#### **SKU**

[LN48](#)  
[LN10](#)  
[WCP0/](#)  
[CS50](#)  
[ST16](#)  
[ELC14](#)  
[RSR2](#)  
[BR6/4](#)  
[RW19](#)  
[GR00/](#)  
[EZ-Rig](#)  
[CT70/](#)

### **REVERSE MOUNT HOBbled SHADE: STEP-BY-STEP INSTRUCTIONS**

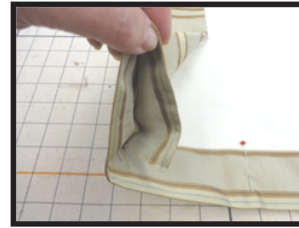
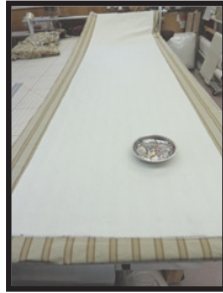
This shade was built to comply with the current ANSI Standard of Safety for Corded Window Coverings. An approved tension device must be installed to complete compliance.

This shade finished at 26"W x 71 1/2"L. The valance finished at 27"W x 12"L.

#### **Cutting and Prepping the Fabric:**

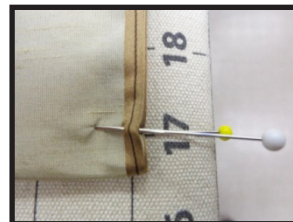
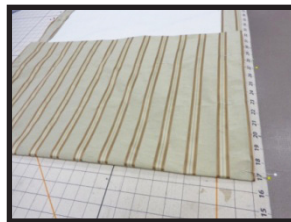
- 1** Cut the face fabric finished width plus 8" x 134 1/2"L.  
A. 11 hobbles using 10" = 110" + 1" for mounting + 8" for a 4" double folded hem with a 5 1/2" apron + 10" for slats = 134 1/2"CL.
- 2** Cut the interlining at finished width (26") x 126 1/2"L.
- 3** Cut the lining at finished width (26") x 126 1/2"L.
- 4** Lay the face fabric face down on the table, smoothing out any wrinkles.
- 5** Fold in and iron 2" double-fold side hems.

- 6 Fold in and iron 4" double fold bottom hem.
- 7 Open the side and bottom hems and lay in the interlining and then the lining, face up.
- 8 Pin the side and bottom hems closed.

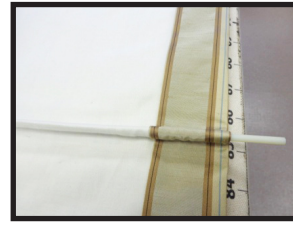
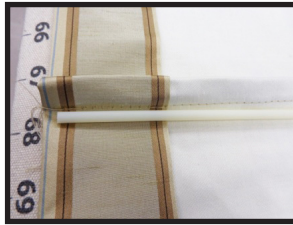


## Making the Hobblers (slats to the back):

- 1 Flip the shade over so that it lays face up on the table.
  - A. The photos below show the fabric face down which will result in the pockets being to the front. If you want the pockets on the front, follow the photos; if you want the pockets on the back, follow the steps.
- 2 Starting at the bottom, mark up 5 1/2" for the apron, from there mark up 10" and again at 1" more. Repeat the 10" and 1" marks until you have marked for 11 hobbles. Place a pin at the marks.
- 3 Fold the fabric right sides together, match each 10" pin to its 1" pin. Iron.
  - A. This is creasing in the rod pocket for the ribs.

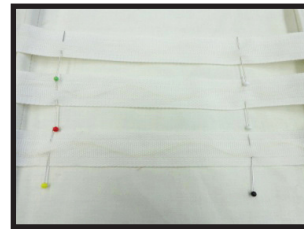


- 4 Sew across the width of the shade, using 1/2" seam allowance to enclose the rib pockets.
- 5 At the machine, unfold the hem one time. Sew across the folded edge, using 1" seam allowance.
  - A. This is the pocket for the weight bar.
- 6 Refold and pin the hem. Do not sew the top hem seam yet.
- 7 Cut plastic ribs to finished width- 1/2" (25 1/2"), cutting one rib for every pocket.
- 8 Insert one rib into each rib pocket. Close the pocket by gluing or hand tacking.



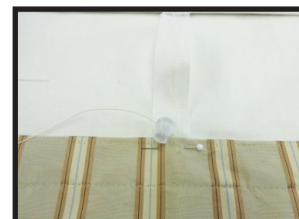
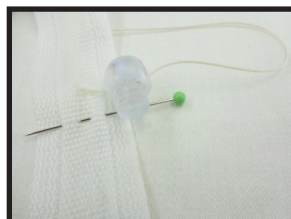
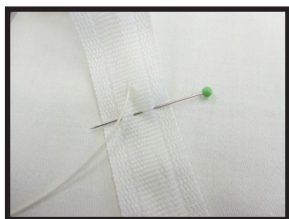
## Marking the Lift Tape:

- 1** Cut 3 pieces of Encased Lift Cord Shroud Tape to finished length plus 12" (84" rounded up).
- 2** At the table, lay out the rib tape.
- 3** Starting at one end, mark up and pin across at 3". From there mark every 6" running up the tape until you have 12 pins.
- 4** Complete the same steps for all rows of lift tape.

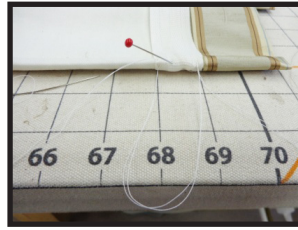


## Attaching the Lift Tape to the Shade:

- 1** Lay the tape over the back of the shade so that the 3" on the bottom of the tape aligns with the 4" double-folded hem.
- 2** Pick the cord out of the tape at the top of the hem and run it through an orb.
- 3** Lay the empty tape in the hem and re-pin to keep it from moving.



- 4** Running the tape up the shade, match a pin to every rib pocket. Re-pin.
- 5** Tack both sides of the tape to the rib pocket, removing pins as you go.
- 6** After the last tack point, run the rest of the tape up to the top of the shade and pin in place. You'll address this later.

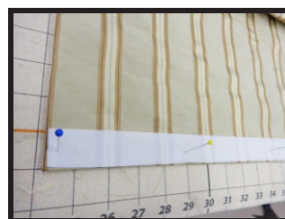
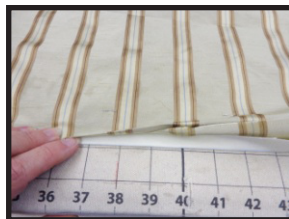


## Finishing the Shade:

- 1 At the bottom of each row of lift, sew on a shade ring. The ring should be just above the pinned hem.
- 2 Remove the cord from the orb, run it through the ring and then back through the orb.
- 3 Machine-sew the top of the weight bar pocket, making sure not to catch the rings but catching the empty tape.
- 4 Cut the weight bar to finished width – ½" (25 ½").
- 5 Insert the weight bar into the pocket and hand close the sides.
- 6 If your fabric calls for it, close the side hems now.

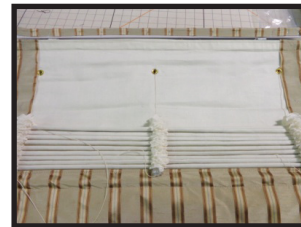
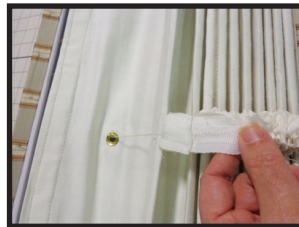


- 7 Measure for the finished length and mark. Cut to finished length plus 1".
- 8 Turn under the inch and press; refold so the face and lining join to make a finished edge; re-press.
- 9 Cut a length of loop tape the finished width of the shade (26").
- 10 Sew it to the face of the shade, closing the top and attaching the loop tape at the same time.



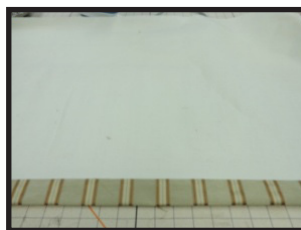
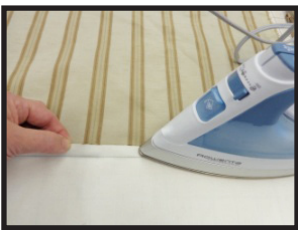


- 11 At the finished top, marking on the back, measure down at least 3" and mark for grommets.
- 12 Cut holes and set grommets with the face of the grommet to the front of the shade.
- 13 Pick the cord out of the lift tape, from the back, and run it through the grommet to the face of the shade.
- 14 Cut the shroud to 2" past the cord, cut it off, turn it under twice and hand tack it to the back of the shade.
- 15 Place an orb on the cord on the front of the shade for safe-keeping.



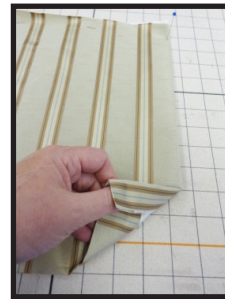
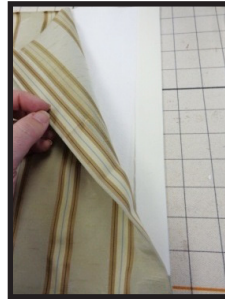
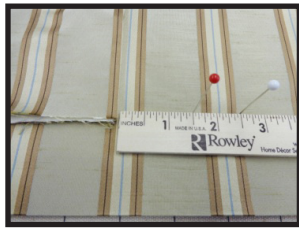
## Making the Valance:

- 1 Cut the valance 37"W x 16"L, making sure the center pattern matches the center pattern of the shade.
- 2 Cut lining 37"W x 14 1/2"L.
- 3 Cut a piece of interlining 35"W x 14 1/2"L, making sure you have a good straight cut on the bottom edge.
- 4 With right sides together, sew the lining to the face fabric at the bottom only.
- 5 Back at the table, iron the seam toward the face fabric, and then fold in a 2" hem and iron to set a crease.  
**A.** 2" of the face fabric will show on the back hem.
- 6 With the lining facing the table, open the valance and slip the interlining inside, centering the interlining leaving 1" uncovered at each end.
- 7 Refold the valance and staple across the top to hold all layers in place.



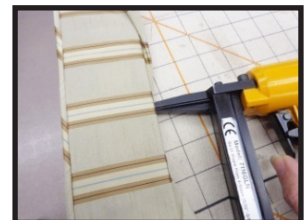
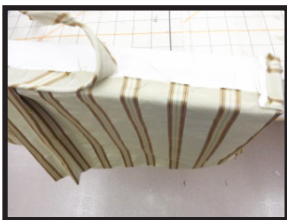
- 8 Aligning the valance again with the shade, fold in the center pleat.  
**A.** An inverted box is shown but was changed to a traditional box pleat later.

- 9 Measure over from the pleat to the finished width plus returns and mark with a pin. Also measure over 1" and mark. Trim to the 1" mark. Do this on both sides.
- 10 Turn under the 1" and iron. Refold as necessary to put all raw edges inside. Close side hem.



## Mounting the Valance and Shade:

- 1 Position the valance on the mount board and staple, wrapping the returns.
- 2 Staple on a row of welt to the top of the board, if desired.
- 3 Finish the top of the board using a straight-cut piece of fabric that matches the face in pattern, attaching it with cardboard tack strip.



- 4 Attach ceiling mount brackets to the underside of the board for the EZ-Rig shade system, so that they are facing the window (backwards from a normal installation) and to the back of the board inset by 1/4".
- 5 Snap the head rail into the system.
- 6 Remove the top orbs and thread the cords coming from the front of the shade into the shade system.
- 7 Pressure fit the top of the shade to the shade system.



## Installing the Treatment:

- 1 Pull the shade all the way up and detach it from the head rail, letting it hang for now.
- 2 Install angle irons to the wall/window.
- 3 Pop the head rail out of the brackets, letting it hang also.
- 4 Secure the mount board to the angle irons.
- 5 Pop the head rail back into the brackets.
- 6 Re-attach the shade to the back of the system.
- 7 Level the shade, removing orbs and tying off lift cord to the bottom ring.
- 8 Dress.

