

Decorating the Cabana with Cushions & Pillows

Once the cabana frame is built, it's time to add color and texture with uniquely shaped pillows to cover the outdoor bed frame and decorative throw pillows to relax on. For the step-by-step instructions on fabricating the sheer grommet panels and decorative pinch pleat panels, please see the How-To Guide on Decorating the Cabana with Sheers & Panels.



Decorating the Cabana with Cushions and Pillows: Step-By-Step Instructions

This how-to guide covers the steps to decorate our outdoor cabana. We are adding a Queen-sized cushion cover, two uniquely shaped back pillows and decorative throw pillows to add interest and comfort to the inside for a comfy, private spot for your customer.

Materials & Supplies

Rowley Products

R-TEX Polyfoam Welt Cord
 R-TEX Cotton Welt Cord - 1"
 Double Faced Adhesive Tape - 1"
 Polyester Batting
 Curved Needles
 A&E Upholstery Thread
 Molded Tooth Zippers - #5
 Molded Tooth Zipper Slides - #5
 R-TEX Hook Tape - 2"
 R-TEX Loop Tape - 2"
 Crimp Button Forms - #36
 Cutting & Setting Dies for Crimp
 Button Form - #36
 Grommet / Button Press
 Chipboard for Grommet &
 Button Press Cutters
 Grommet Press Cutting Block
 Crimp Button Setter Adapter
 Bolster Needle - 24"
 R-TEX Poly Cord
 Fringe Adhesive
 R-TEX Micro Welt Cord
 Polyester Cluster Pillow Insert
 Pillow Stuffing - Polyester Cluster
 Moisture Resistant Fabric
 Polyester Iron-On Batting

SKU

[WC39/](#)
[WCC7/](#)
[DF100](#)
[PF76](#)
[TP68](#)
[TU6K/](#)
[ETR52/](#)
[ETP5/](#)
[HT200/](#)
[LT200/](#)
[FCA36](#)

[GLH36](#)
[GL](#)

[GLC/P](#)
[GL57](#)
[GLA](#)
[TP89](#)
[LC9C/11](#)
[FA10](#)
[WC83](#)
[PJ28](#)
[PJ90](#)
[SF30/10](#)
[PA20/](#)

Other Materials Used:

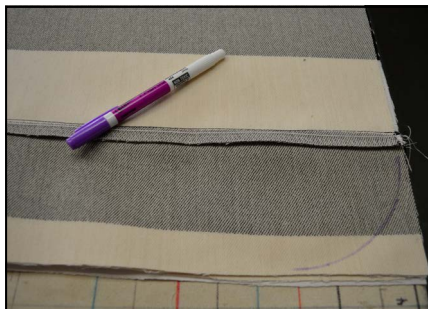
4" Tape
 1" Elastic
 Bodkin - for threading elastic

Making the Queen-Sized Cushion Cover:

- 1 Cut widths needed to cover top of mattress + seam allowances.
- 2 Join widths, matching patterns as needed, then serge seams.



- 3 Round off all four corners by folding in four and tracing around something round.

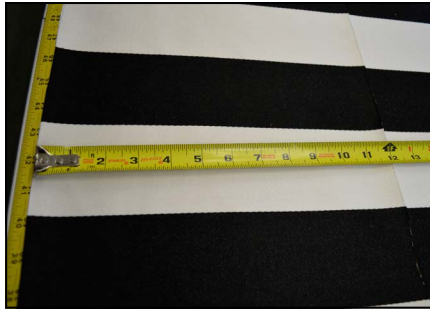


- 4 Cut and make welt cord – enough to go around all four sides.
- 5 Sew welt to cushion top.



- 6 Cut enough 12" widths to go around all four sides of the cushion top. Serge both long sides.
A. Pieces need to be mattress depth + 5" minimum.
- 7 Join widths and serge long sides.

- 8 Sew band to cushion top.



- 9 Turn under 2" along outside of band. Press.

- 10 Fold under serge line and re-press to form a casing.

- 11 Top stitch along edge, leaving an opening for the elastic.



- 12 Thread elastic through casing using a bodkin, pinning at both sides of corners.

- 13 Join ends and machine close opening.



Making the Fun-Noodle Rectangle Back Pillow:

Our pillow finished 14" square x 60" long, with a zipper in the bottom and decorative buttons on each end.

Making the Insert:

- 1 Cut fun-noodles to length needed – ½" to 1", taping pieces as needed.
- 2 Make sections of three noodles, side-by-side, and tape together flat.
- 3 Make three sections of three.



- 4 Layer the three sections on top of each other using double-sided tape to keep things in place.
- 5 Fill the outside crevices with rows of 1" welt cord.
- 6 Tape around full insert.

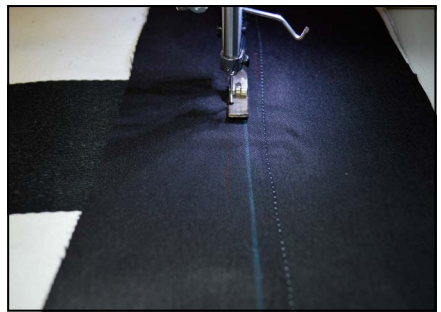
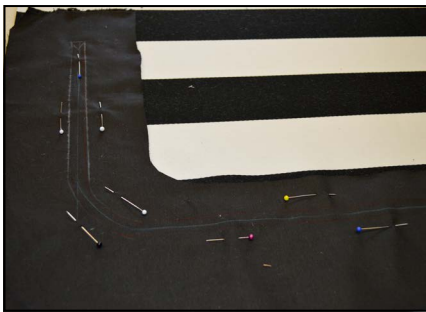
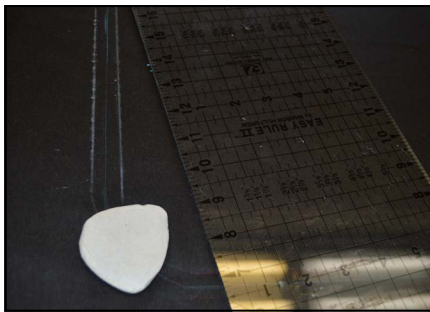


- 7 Wrap insert with a layer of batting, including ends, and whip-stitch batting closed.



Making the Pillow Casing:

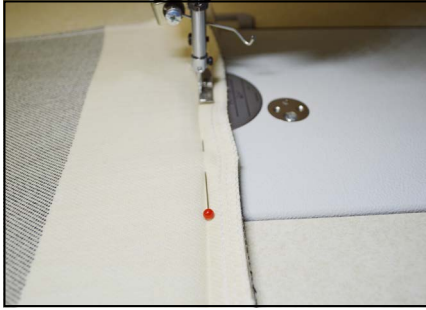
- 1 Cut the top and two sides as one piece + seam allowances.
- 2 Cut the bottom slightly larger than needed + seam allowances.
- 3 Insert a bound, curved zipper into the bottom piece.
 - A. On a piece of lining, draw out zipper path and add $\frac{1}{2}$ " to each side of shape.
 - B. Lay lining over face of bottom. Pin well over.
 - C. Load zipper with pull and block off both ends.
 - D. Stitch along outside two paths to join lining to bottom.
 - E. Cut through all layers, down the middle of the zipper path.
 - F. Turn lining to back and press.
 - G. Lay zipper in path, notching chain as needed so it lays flat.
 - H. Top-stitch zipper in place.



- 4 Trim bottom to size needed.



- 5 Sew top to bottom along one long side only.



- 6 Cut and make straps, adding hook and loop to one good end.

- 7 Lay straps in place. Pin.



- 8 Sew rest of pillow casing together, along long side.

- 9 Cut and make welt cord.

- 10 Sew welt cord to pillow ends.

- 11 Sew in ends, marking quarters.



- 12 Turn right sides out and stuff then zip closed.



Adding the Buttons:

- 1 Make enough buttons for the button pattern you want for each end.



- 2 Mark for buttons.
- 3 Load buttons and tie twine to button.
- 4 Using a long mattress needle, shoot button and twine through the holes in the noodles.
- 5 Tie off buttons.
- 6 Complete all buttons.



Making the Triangle Back Pillow:

Our pillow finished 16" high x 53" wide with a 4" flat bottom.

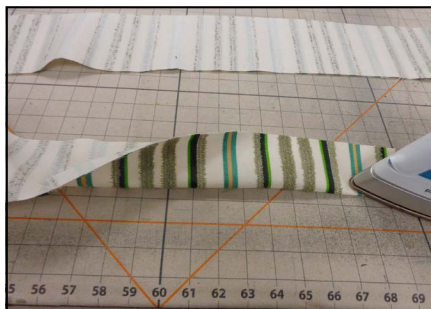
- 1 Cut the front and back as one piece, cutting a 32" high x 54" wide piece.
- 2 Cut two widths at 4" for the zipper.



- 3 Fold fabric right sides together, lengthwise.
- 4 Sew ½" seam allowance along both short sides.



- 5 For the zipper, fold both lengths in half, lengthwise and press.
- 6 Make a flap zipper, adding the zipper pull.



- 7 Pin one end of the zipper to the center of a short side seam.
- 8 Notch corners on pillow casing and finish pinning in zipper, making notches at the other end.
A. Your zipper may be too long so trim as needed.
- 9 Sew in zipper.

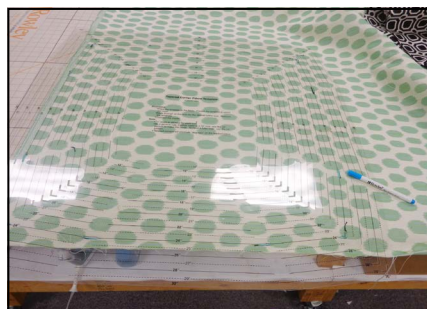


- 10 Make an insert using the Moisture Resistant Fabric as the casing.
- 11 Hand stuff and machine close.
- 12 Insert pillow insert into casing and zip closed.



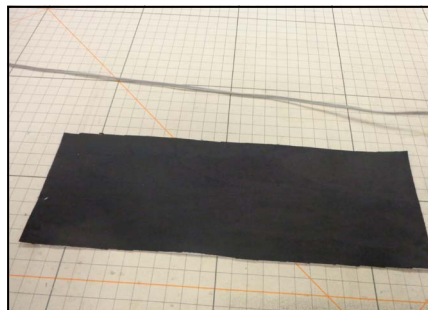
Making the Decorative Throw Pillows:

- 1 Cut pillow front and back + seam allowances.
- 2 Cut an additional strip of material for the bottom of the back zipper.



- 3 Cut a center band about $\frac{1}{3}$ the length x the full width of the pillow cut.

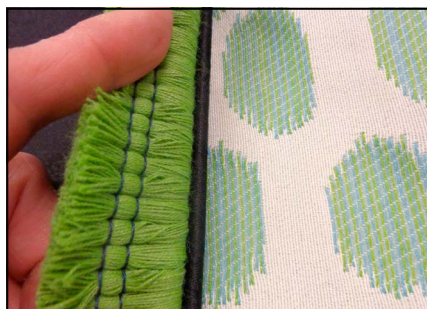
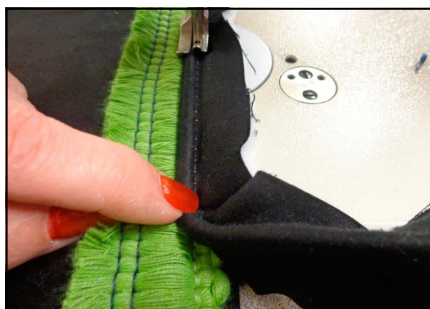
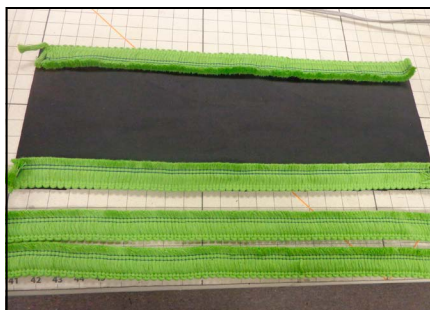
- 4 Iron on a layer of Iron-On Batting to the back of the band.



- 5 Sew a row of decorative trim on each side of the band.

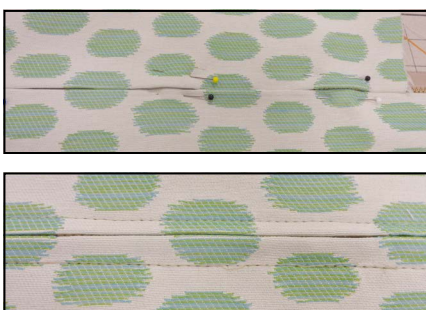
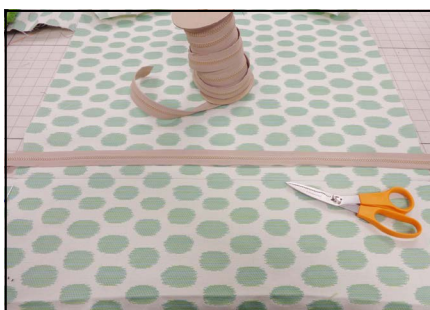
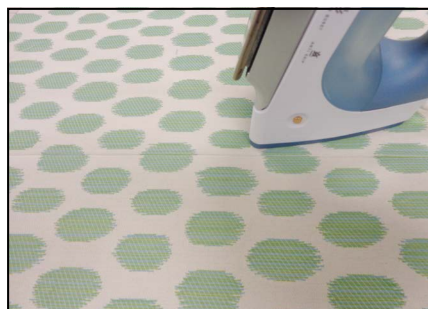
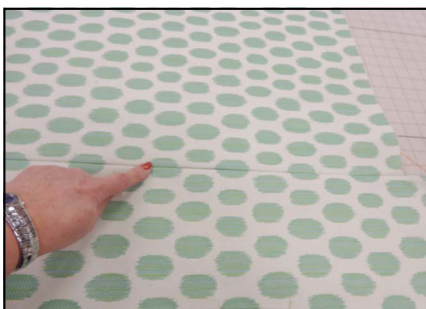
OPTIONAL: Make micro welt cord, enough to go along both sides of the band. Sew welt over the same seam as the decorative trim. This small welt will make the trim stand up more and look fuller.

- 6 Tuck under seam allowances and stitch-in-the-ditch to attach band to pillow front.

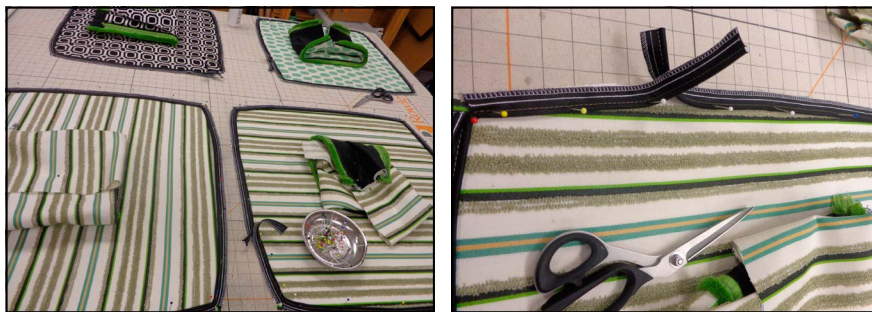


- 7 Sew a zipper into the back using the extra strip of fabric as one side of the zipper.

- 8 Trim zippered back to fit pillow front.

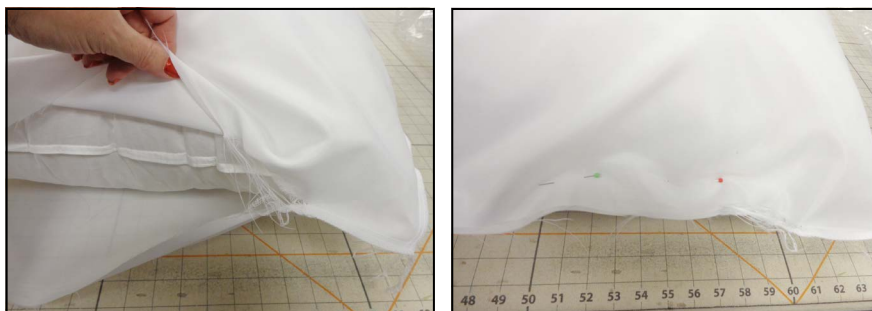


- 9 Make and sew on welt cord to the outside of the front pillow piece, making joins at the machine.



- 10 Place front to back, right sides together and sew pillow together.

- 11 Cover a ready-made pillow insert with Moisture Resistant Fabric for better protection from the elements.



- 12 Insert covered pillow insert into casing and zip closed.

- 13 Fluff decorative trim.



Installing It All!

- 1 Stretch the mattress cover over the mattress.
- 2 Place the large, rectangle pillow at the head of the mattress, securing under the mattress with the hook and loop straps.
- 3 Place large, triangle pillow next to rectangle pillow.
- 4 Add throw pillows.

