

Decorating the Cabana with Sheers & Panels

Once the cabana frame is built, it's time to add shade and privacy by installing decorative pinch pleat panels and sheers designed with outdoor fabrics. For step-by-step instructions on how to fabricate the decorative cushion cover and pillows, please see the How-To Guide on Decorating the Cabana with Cushions & Pillows.

Materials & Supplies

Rowley Products

Hanes Classic Napped Lining	LN48/
Glass Head Straight Pins	TP49
Vinyl Covered Drapery Weights	SW37
R-TEX Translucent Woven Buckram	TT54
R-TEX Woven Permanent Buckram	BW74
Grommet Spacing Template	DYC90
Rubber Grommet Washers	GRPW12
Stainless Steel #12 Grommets	GRS12
Cutting Die for Grommets - #12	GL12/C
Stainless Steel #12 Grommet Hardened Setting Die	GL12/ST
Grommet / Button Press	GL
Chipboard for Grommet & Button Press Cutters	GLC/P
Grommet Press Cutting Block	GL57
John James Hand Sewing Needles	TP110
Drapery Pins – Stainless Steel	DP66

SKU

[LN48/](#)
[TP49](#)
[SW37](#)
[TT54](#)
[BW74](#)
[DYC90](#)
[GRPW12](#)
[GRS12](#)
[GL12/C](#)
[GL12/ST](#)
[GL](#)
[GLC/P](#)
[GL57](#)
[TP110](#)
[DP66](#)

Decorating the Cabana with Sheers & Panels: Step-By-Step Instructions

This how-to guide covers the steps to decorate our outdoor cabana. Adding decorative panels and sheers enclose the space to create a private, relaxing retreat for your customer.

Making the Sheers:

- 1 Cut length (finished length + 8" for hem + 8" for header + 1" for tabling).
- 2 Turn under and press a double 4" bottom hem.



- 3 Close hem using your preferred method.



- 4 Measure and mark for finished length. Trim if needed.

- 5 Turn under and press in a double 4" header.

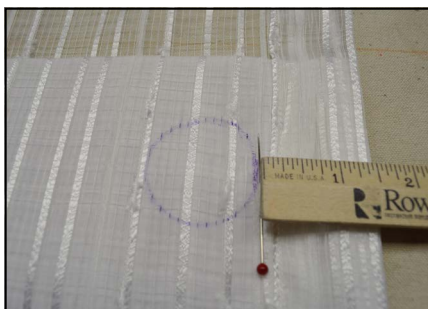
- 6 Add a row of buckram to the header and refold.



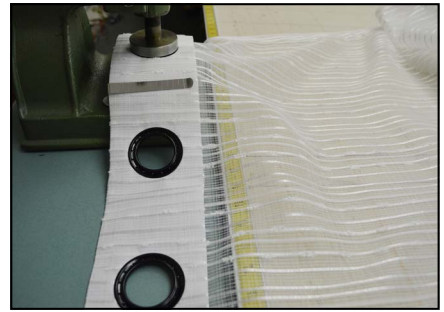
- 7 Fold in and close side hems, removing any excess layers, as needed, at the top.



- 8 Using the Grommet Spacing Template, mark for grommet placement.



- 9 Cut and set grommets, using grommet washers as needed.

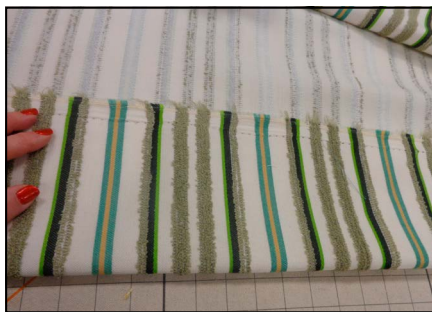


Making the Panels:

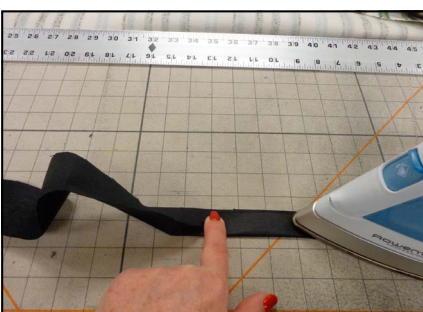
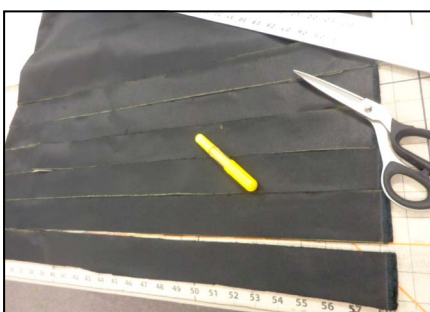
- 1 Cut panel widths to cut length (finished length + 8" for hem + 8" for header).
A. If railroading fabric, you will need 2 widths to get your length.



- 2 Join widths as needed for the top and bottom, matching patterns.
3 Turn under and press a double 4" bottom hem.



- 4 Close hem using your preferred method.
5 Cut and make flat welt, ironing to set a crease.
6 Place flat welt between seams of top and bottom.
7 Sew all three layers together, matching patterns.



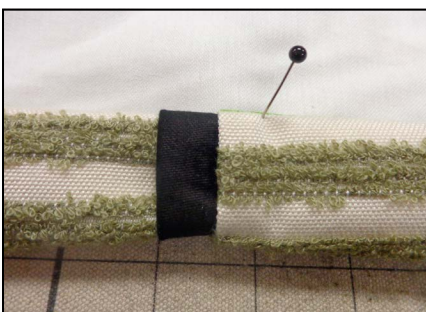
- 8 Lay panel face down on table.
- 9 Cut and join lining pieces as needed and hem with a double turned 3" hem.
- 10 Lay lining on top, face up, of fabric.



- 11 Measure and mark for finished length.
- 12 Turn under and press in a double 4" header.
- 13 Add a row of buckram to the header and refold.



- 14 Turn under and press in a double 1 1/2" side hem on each side.
- 15 Close side hems.



- 16 Mark for pleats and spaces.
- 17 Sew in pleats. Hand tack as needed.
- 18 Add a drapery pin to the back of each pleat at a 1/2" setting.



Installing It All!

- 1 For the sheers, place grommet panels on rods and then hook rods to Cabana frame using an elbow at the corners.
- 2 For the panels, hang panels with the drapery pins into the hooks in the H-Rail rod.
- 3 Dress as needed.

