

Rowley project list: **Fun & Functional Home Office Accessories**

Office design can project luxury without going over your client’s budget. Small changes to an existing space can have a big impact. In this project, we focus on transforming the design of the room by updating existing office furniture with stylish slipcovers, and incorporating fun accessories that add trend-right color, texture and pattern to the room.



MATERIALS & SUPPLIES

Rowley Products

- A&E Upholstery Thread
- Fringe Adhesive
- John James Hand Sewing Needles
- R-TEX Sew-On Hook Tape
- R-TEX Sew-On Loop Tape
- Spray Adhesive

SKU

- [**TU6K**](#)
- [**FA10**](#)
- [**TP100**](#)
- [**HT100/W**](#)
- [**LT100/W**](#)
- [**AS30**](#)

FUN AND FUNCTIONAL HOME OFFICE ACCESSORIES: STEP-BY-STEP INSTRUCTIONS

Slipcovers can be fabricated in many different shapes and sizes to fit all different styles of furniture instantly transforming the look, feel and versatility of a room.

Things to Consider:

- 1 What is the style of the room and furniture piece(s) that you are covering?**
 Slipcovers can be sewn for a loose, casual look or tailored for a more formal design depending on the style of the room.
- 2 Where and how often is the furniture piece that will be slipcovered used? Is it in a dining room where food stains may be a factor or a living room where kids and pets may also be using the furniture?**
 Use will determine what type of fabric you will need to work with. Make sure your fabric is sturdy enough to hold up to wear and is thick enough not to be able to see through it.

Chair Slip Cover:

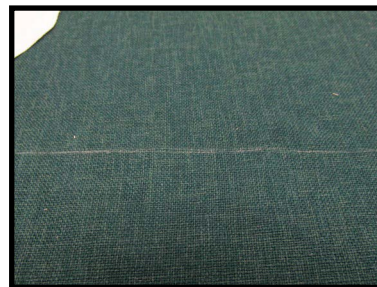
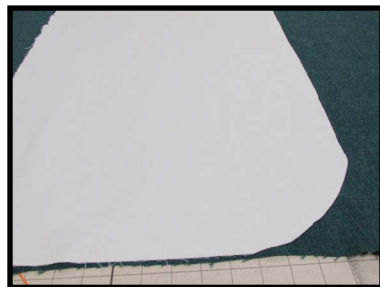
- 1 Using a flexible tape measure, measure the furniture piece(s) that you will slipcover. Make sure to document all sides and angles.
- 2 Use scrap fabric or muslin to make a pattern. Cut to the approximate size of the different sections of the piece of furniture like the seat of the chair in the example below.



- 3 Tuck the scrap fabric or muslin loosely to conform to the general shape of the furniture piece. Use tailors chalk to identify where to cut out pattern pieces for the arms, back, seat and sides of the chair, then cut along these lines.
- 4 Place pieces back on the chair. Pin all places that need to be sewn factoring in an extra inch for the seams.



- 5 When pieces are satisfactory, position on the face fabric. Cut out pieces of face fabric and transfer chalk lines to face fabric.



- 6 Pin the sections of the slipcover on the chair. Use straight pins to assemble the sections of the cover, taking care to pin just inside the chalk lines.

- 7** Sew the sections together. To achieve a tailored look, leave one back and side seam open. This opening will be closed with hook and loop tape. Fold backside and side with a 1" hem. This is where you will attach the hook and loop tape. Apply the hook tape to the underside of the seam on the top and the loop tape to the top side on the other side. Sew in place.



- 8** Try on the slipcover for size. Tuck in corners. Pin, then sew any adjustments.



Bench Cushion Slip Cover:

- 1** Measure the cushion top, bottom, banding and band perimeter.
- 2** Start with two large pieces approximately 1" larger than the cushion top and cushion bottom. Mark centers and corners.
- 3** Using the banding measurement of perimeter (L) and thickness (W), cut a piece 1" longer and 1" wider. This is your middle band.
- 4** Sew the middle band to the cushion top matching corners and centers.
- 5** Cut a slit in the middle of the bottom cushion. Fold under 1/2" all around.
- 6** Insert zipper in the slit. Open zipper.
- 7** Sew the bottom to the band, matching corners and centers.
- 8** Turn inside out.



Desk Accessories:

- 1 Start with desk accessories that work with the style of the room.



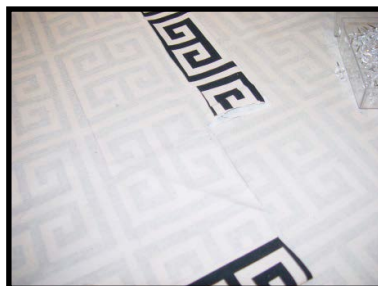
- 2 Measure all sides to determine the amount of fabric that you will need to cover the accessory.



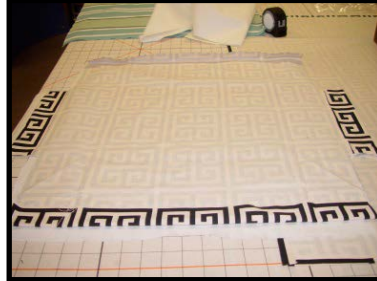
- 3 Cut fabric to approximate size. Lay flat on table wrong side up. Test wrapping the fabric starting with side.



- 4 Finish the edges by folding the hem under and gluing it in place.



- 5** Fold up finished edges and glue in place using fringe adhesive or spray adhesive.
*Use this method for any shape or size.



Coordinating Mouse Pad:

- 1** Trace and cut the face fabric pad to the exact measurements of the mouse pad with 1" extra on all sides. Fold under and glue in place.

