

Rowley project list: Upholstering an Oval-Back Chair

Whether this style of chair is called a Picture-back or an Oval-Back, it is upholstered the same. You will find three areas to upholster: the Outside Back, which is done from the inside, the Inside Back and the Seat. Adding welt cord or decorative nails helps to bring this chair to a statement piece for any room.



MATERIALS & SUPPLIES

Rowley Products

120" Flat Tape Measure
 Upholstery Staple Remover
 71 Series Staples
 R-TEC Upholstery Air Stapler
 Magnetic Tack Hammer
 Skirtex Stiffener
 Spray Adhesive
 R-TEX Firm Double Welt Cord
 Upholstery Regulator
 Polyester Batting
 Polyester Iron-On Batting
 Scissors
 High Temperature Glue Gun
 High Temperature Glue Sticks

SKU

[DT8](#)
[MH22](#)
[NS33/E](#)
[NSG10](#)
[MH10](#)
[SKX55/](#)
[AS30](#)
[WC52](#)
[MH34](#)
[PF72](#)
[PA20/](#)
[CU22](#)
[DT50](#)
[DT55](#)

UPHOLSTERING AN OVAL-BACK CHAIR: STEP-BY-STEP INSTRUCTIONS:

This project guide covers the steps to upholster an Oval-Back chair and to make a small lumbar pillow that has quilted detail.

Measuring for Yardage Needed:

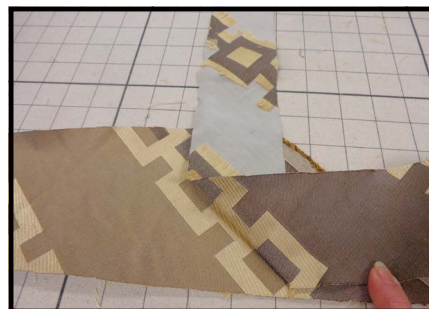
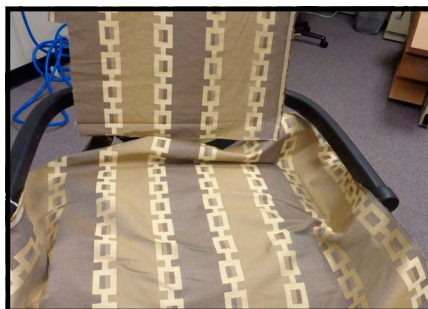
- 1 On the Inside Back, measure the widest and tallest area of the fabric, adding 2" to each side for "play"
- 2 Measure the Seat at the widest and deepest area, adding 2" on each side for play.

- 3** For the Outside Back, use the Inside back measurements.
- 4** Measure all areas of double welt cord. Welt will need to be cut on the bias.
- 5** Complete a cut plan to figure amount of yardage needed for your project.
 - A.** Lay pieces out on a grid, not exceeding the width of your fabric.
 - B.** Add up all lengths and divide by 36 for yardage.



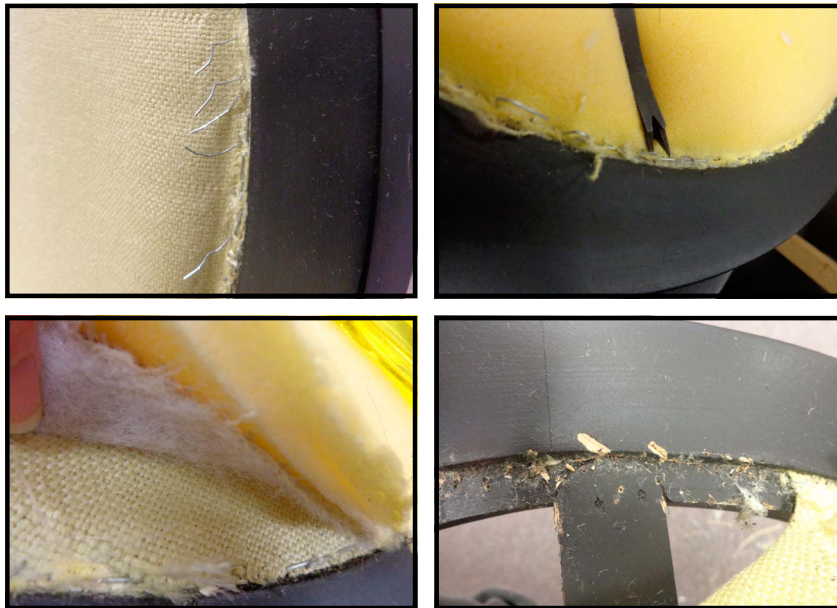
Cutting and Marking the Pieces:

- 1** From your cut plan, cut the Inside Back, Outside Back and Seat, as well as the welt cord strips needed.
- 2** Mark all pieces.
- 3** Join welt strips as needed and make double welt.



Tear-Down:

- 1 Gently remove double welt and all exposed staples.
- 2 Remove fabric on the Seat and Inside Back, removing all exposed staples.
- 3 Remove and save batting and any foam, removing all exposed staples.
- 4 Remove layers of foundation padding from the Outside Back, then remove fabric and all exposed staples.
 - A. ALL staples must be removed.
 - B. Be very careful in pulling the staples as most of the time you will be against good wood.
- 5 Repair any mars from removing staples.



Upholstering the Outside Back:

- 1 Lay the chair face up on the table to expose the opening for the Outside Back. This will be the inside of the chair back.
- 2 Place fabric face down, aligning pattern.
- 3 Staple fabric in place, stapling in the trench but not right up tight to the good wood.
- 4 Fold in or trim away any excess fabric.
- 5 Add a layer of batting or stiffer material to keep fabric in place and to help add stiffness to the back.



Upholstering the Inside Back:

- 1 Replace and sparingly staple foam and batting.
- 2 Place fabric, aligning pattern to match Outside Back pattern placement.
- 3 Staple, stapling in the trench but not right up tight to the good wood.
- 4 Trim away any excess fabric so no fabric sticks out past the channel.

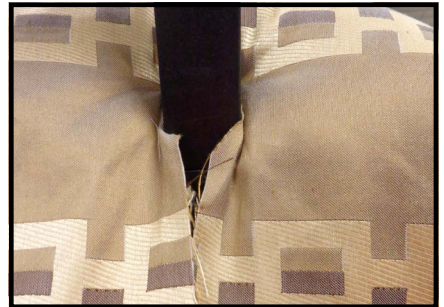


Upholstering the Seat:

- 1 Replace and sparingly staple foam and batting.
- 2 Cut away excess batting at the front corners.
- 3 Make straight relief cuts for batting to get around back rails.
- 4 Staple the batting in the channel but not right up against the good wood.

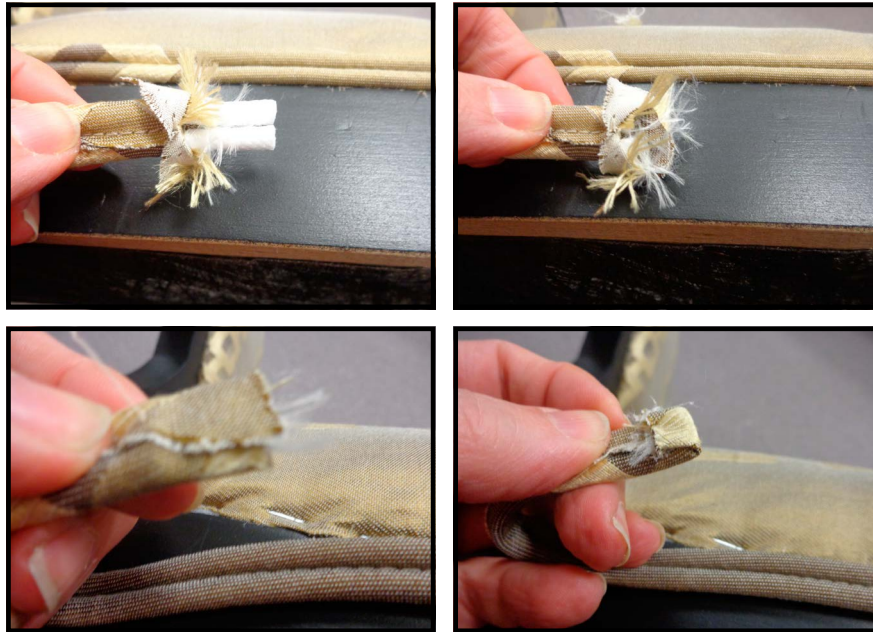


- 5 Place fabric on seat, matching Inside Back pattern placement.
- 6 Trim and tuck edges. Staple in the channel.
- 7 Around the back rails, make a "peace sign" relief cut to allow good fabric to fold to each side of the rail.
- 8 At the front corners, fold in and staple a pleat, making sure the pleat faces the side of the chair.



Adding the Double Welt Cord:

- 1 Starting at an end placement, cut the cord out of the casing, fold the casing back on itself and seal with a drop of hot glue. This makes a "good stop."
- 2 Glue the welt to the chair, covering the channel and hiding any raw edges.
- 3 Make a "good stop" on the welt at the other end of the area.
- 4 Complete all areas of welt.



Finishing the Chair:

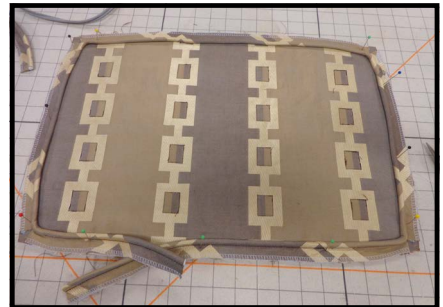
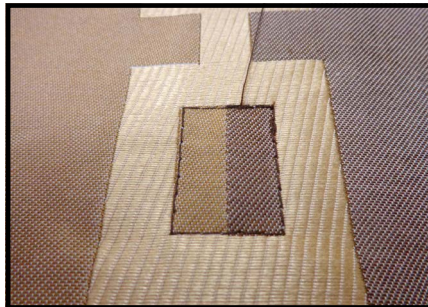
- 1 Staple a layer of Cambric to the bottom of the chair.
- 2 Steam the chair to fluff up the foam and release any small wrinkles.

Making the Quilted Lumbar Pillow:

- 1 Cut front and back of pillow to match pattern placement of chair.
- 2 Iron on a layer of Iron-On batting to the front and back pieces.
- 3 Make enough welt to go around the pillow + a few inches for joining.



- 4 On the front piece, top stitch around the geometric shape to give a quilted look.
- 5 Sew welt to front, joining at the machine.



- 7 Place front and back, right sides together and sew around outside, leaving a small area for turning.
- 8 Turn right sides out and stuff.
- 9 Hand close.



