

# Fabrication *Style* Guide



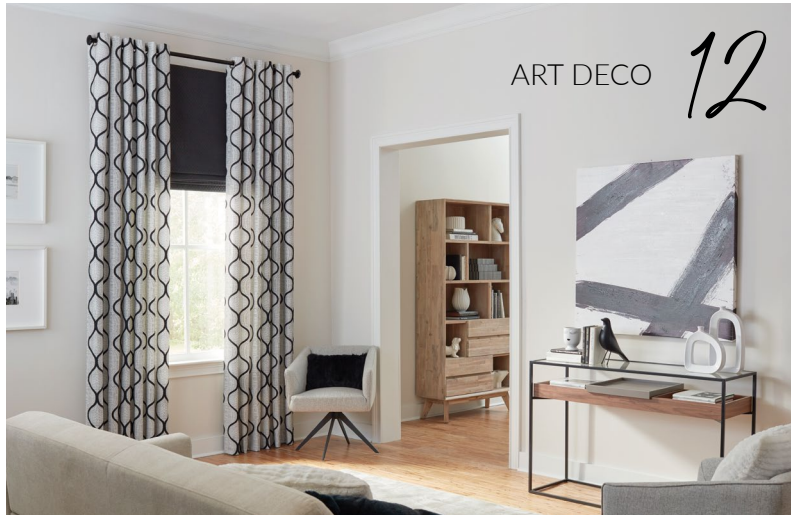
Your partner for  
*every project*

No matter the style, we've got the products to bring your projects to life. Dive into our Fabrication Style Guide and discover how our extensive portfolio of over 15,000 products offers a diverse range of options to suit every project.

Visit our Learning Center to stay in-the-know with our *free* educational resources.

Look for these icons throughout the guide to learn more!  
↓ HOW-TO GUIDE | ▷ RECORDED WEBINAR | 🛒 SHOP





ART DECO 12



8 TRANSITIONAL



20 HOLLYWOOD REGENCY



14 FARMHOUSE CHIC

# Our workroom Product Categories

## WORKROOM



Whether you operate a drapery workroom or upholstery workroom, our commitment to quality products and exceptional customer service guarantees efficient and cost-effective operations for your business.



## UPHOLSTERY



We empower our professional trade and retail partners to grow their businesses by offering a comprehensive range of upholstery supplies, tools, and services, precisely when they're needed.



## NOTIONS



We manufacture high-quality sewing notions and accessories to support any fabric project, including pins, needles, zippers, thread, and more!



## INSTALLATION



We supply trade and retail partners with all the installation hardware, tools, and accessories necessary for beautiful drapery & shade installations.



## SHADES



Expand your shades business with our innovative and high-quality motorized and cordless shade systems, along with a range of shade starter kits to elevate your workroom or showroom.



## DRAPERY HARDWARE



From batons and curtain rods to architectural tracks and decorative drapery hardware, we provide the comprehensive range of drapery hardware necessary to fulfill any custom window project.



# Style: Traditional

Embodying timeless refinement, our interpretation of Traditional style exudes classic elegance. Showcasing an unwavering commitment to meticulous details and premium materials, this style elevates the art of window design, seamlessly blending sophistication with enduring allure.

Reupholster a classic wingback chair, emblematic of traditional style, with our

*upholstery tools.* 



Fabricate elegant drapery panels that are pleated to pattern with button details and a center *godet*. ▷



Layer *mock relaxed roman shades* under stationary silk panels with swags. ↓



*header style*

Craft timeless elegance with scalloped arch pleated panels hung from medallions. Simplify with our Pattern Making Paper [DYC18/](#) for precise templates.

## *types of fabrics*



RMCOCO  
Rialto Damask / Currant

*damask* is a woven fabric with elaborate floral or geometric designs, often used in traditional interior design for drapery, upholstery, and bedding due to its timeless appeal.



RMCOCO  
Rangoon Stripe / Graphite

*striped fabrics*, popular in formal traditional settings, range from narrow pinstripes to bold, wide stripes. Often paired with solids or other patterns.

## *lancashire english domette interlining*



100% cotton. Use as an interlining in high-end treatments. Higher nap than Heavy Flannel. Available in White or Natural.

**WHYTE & IVORY**, exclusively available through Rowley®.

# Style: Contemporary

Infusing a timeless and sophisticated aura, our Contemporary style captivates with its emphasis on clean lines, vibrant colors, and the use of distinctive materials. The result is a harmonious fusion of form and function, creating a space that resonates with modern elegance.

ELEMENTS®  
— SHADE COLLECTION —

*twilight shades* from our Elements® Shade Collection feature a distinctive and fashion-forward design, with a continuous loop alternating between solid and sheer horizontal stripes, perfect for a contemporary feel. 

Fabricate custom pillows with *unique trims* using our workroom products and create a coordinating throw blanket with trim for added style. ▷



## Types of fabrics



Greenhouse | Capri Colors  
S2869 Cloud Mist

Contemporary style draperies frequently display *floral prints*, spanning from small, delicate patterns to large, bold designs. These prints can also be used for throw pillows, adding a modern, eye-catching touch to your décor.



S. Harris  
Drop Cloth Black Indigo

*linen* is a staple in contemporary interior design, prized for its lightweight, breathable nature and natural texture. Its versatility adds depth and character to any space.

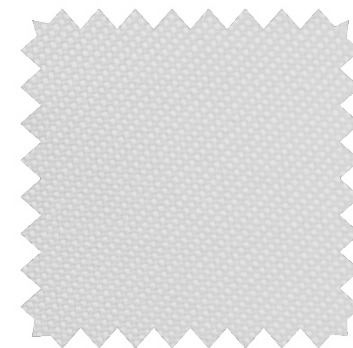


Adding a layer of *interlining* to custom drapery enhances insulation, protects the face fabric from fading, and creates elegant channels from the top of the drapery down to the floor. 🛒

## header style

Goblet pleat headers, like pinch pleats but with a more dramatic and elaborate design, create deep folds resembling the shape of a goblet, hence the name. Secure them with a gathering stitch below the pleat. 🛒

## sherwood sateen lining



52C/48P blend. Sateen weave, drapes well. Good for use with poly blend face fabrics. Available in White or Pale Ivory. 🛒

**WHYTE & IVORY**, exclusively available through Rowley®.

# Style: Transitional

Seamlessly merging traditional and modern design elements, our Transitional style embodies a balance of timeless shapes and clean lines. This versatile approach creates an inviting atmosphere, offering a perfect blend of classic and contemporary aesthetics.



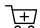
Create and design modular seating and a collection of transitional pillows using *performance fabrics*, suitable for indoor and outdoor use.



Use our *pinsetter's* adjustable guide for precise drapery pin placement. 



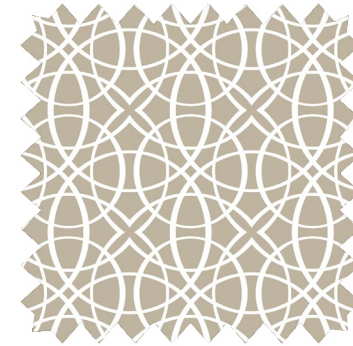
*header style*

Ripplefold headers create elegant fabric channels from pole to floor with track system carriers, suitable for both light and heavy fabrics. 



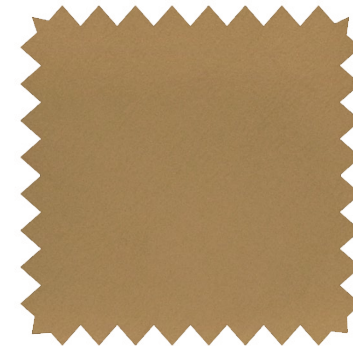
Elements® Shade Collection's *decorative textile film* is flexible and versatile, suitable for any window type, offering you the freedom to express your style and creativity. 

*types of fabrics*



RMCOCO  
Spiro / Sand Castle

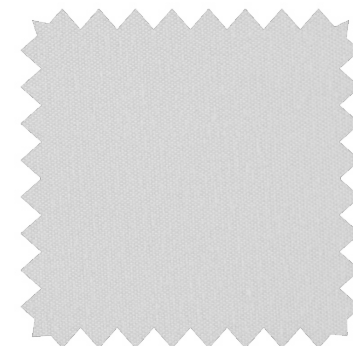
Bold *geometric patterns* bring modern flair to transitional style, perfect for upholstery and drapery.




Greenhouse  
F3802 Apache

*leather* is durable and versatile, ideal for unique pillow designs and drapery embellishments, imparting warmth, and richness to transitional spaces.

*buckingham blackout fire retardant lining*



100% polyester microfiber substrate with 3 pass blackout. Drapes beautifully. Available in White or Pale Ivory. 

**WHYTE & IVORY**, exclusively available through Rowley®.

# Style: Mid-Century Modern

Drawing inspiration from the sleek lines and functional elegance of the mid-20th century, our Mid-Century Modern design features clean geometric shapes and a minimalist approach. Paying homage to design classics, this style brings a touch of nostalgia to the present.

Learn to craft three *unique pillow designs* with custom buttons and reversible fabric overlays, adding strong style accents to any room. Plus, discover how to incorporate trending colors for added impact. ↓



Reupholster a stunning *chair* to tie the entire style together. 🛒



Aria  
Atelier

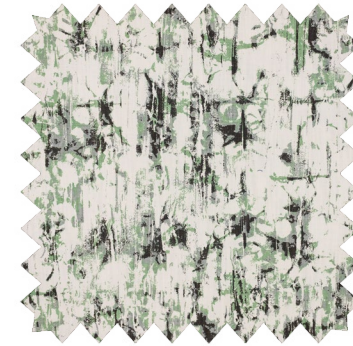
MIX & MATCH  
CUBE FINIAL  
SATIN GOLD +  
BRUSHED BLACK  
NICKEL  
SHAGREEN BAND  
🛒

Discover our *notions* 🛒 to craft the perfect mid-century modern dining accessories, including custom reversible chair cushions and a table runner featuring geometric details. ▶

## *header style*

Embrace the mid-century modern aesthetic with a triple pinch pleat, imparting a tailored and structured appearance. Explore single, double, or triple pleats for the ultimate customization. 🛒

## *types of fabrics*



RMCOCO  
Quarry Find / Venitian

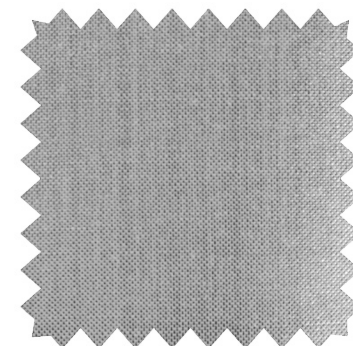
*cotton*, prized for its soft texture and natural aesthetic, is a staple in mid-century modern design, commonly used for curtains, pillows, and bedding.



Greenhouse  
F4623 Granite

*atomic prints*, known for their futuristic motifs like atomic shapes, stars, and bubbles, are popular choices for upholstery fabrics and accent pillows.

## *erii blackout lining*



100% polyester substrate with a 3 pass silver blackout backing for heat reflection properties. Available in Silver/White. 🛒

**WHYTE & IVORY**, exclusively available through Rowley®.

# Style: Art Deco

Celebrating streamlined and geometric design, our Art Deco style introduces artistic modern touches. Embrace the allure of this sophisticated aesthetic that effortlessly combines glamour and contemporary flair.

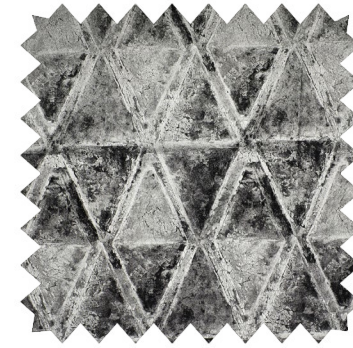
Personalize your client's space by upholstering a *headboard* with a custom shape and upholstery nails for a unique touch they'll adore.

Explore our  *bedding supplies.*

Order your perfect Elements® Express Cellular Shade effortlessly today with our *design your window* feature. 🛒



## Types of fabrics



Greenhouse  
S1904 Noir

Fabrics with *metallic* thread or shiny surfaces perfectly capture the glitzy and glamorous essence of the Art Deco era.



S. Harris  
Pokhara Onyx

Choose a fabric adorned with *motifs* inspired by Art Deco architecture and design, such as stylized sunbursts, zigzags, or stepped patterns.

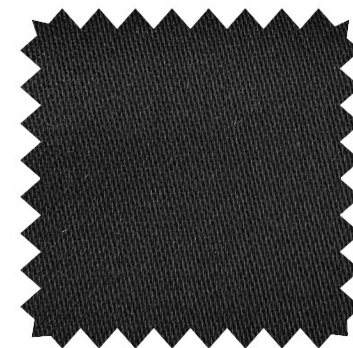


Pair grommet drapery panels with a *roman shade*. 🛒  
 Bonus: utilize our Flat Fiberglass Ribs for creating clean and consistent stacking of the shade. 🛒

## header style

Grommet 🛒 headers are perfect for creating a sleek look by creating uniform folds. Consider a low bulk header method when using heavy fabrics typical with art deco style. For effortless grommet spacing, utilize our template. 🛒

## cambridge sateen lining



100% cotton. Tight weave and heavier than most other sateens. Crease resistant. Available in White, Pale Ivory or Black. 🛒

**WHYTE & IVORY**, exclusively available through Rowley®.

# Style: Farmhouse Chic

Rooted in nature and inspired by natural elements, our Farmhouse Chic style invites you to adorn your windows with rich textures. Embrace the warmth and charm of this design, creating a cozy and welcoming atmosphere.

*roller shades* from our Elements® Shade Collection feature a clean, minimal design, offering ultimate privacy and light control. 

**ELEMENTS®**  
— SHADE COLLECTION —

Discover our *rustic retreat* collection by Paris Texas Hardware™ through our distributor network. 🛒



**PTH**  
PARIS TEXAS  
HARDWARE™

ASH FINIAL  
STARDUST

RMCOCO  
VANISHING  
POINT  
OLD GOLD

## *header style*

Enhance your drapery with a middle-tacked two-finger pleat for a tailored and timeless style. For heavy or bulky fabrics, opt for fewer fingers in the pleats. 🛒



Create a warm and inviting farmhouse ambiance by blending colors and textures, as highlighted in our Fall Rustic Retreat Roomscape. Bonus: Add interest by mixing *pillow insert* shapes and sizes from our selection. 🛒

## *types of fabrics*



RMCOCO  
French Laundry Stripe Crypton® / Indigo

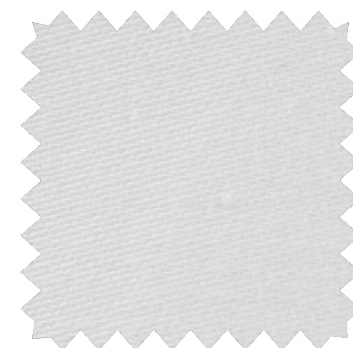
Embrace the timeless charm of farmhouse style by incorporating *stripes* and rustic textures like burlap.



RMCOCO  
Ignite Wide-Width Sheer / Grotto

Choose embroidered *ikat sheer* fabric for rustic elegance in your farmhouse chic space. Its delicate embroidery and airy texture capture the essence of farmhouse living with subtle sophistication.

## *cambridge napped sateen lining*



100% cotton with nap on one side. Ideal for situations where interlining is needed but not the bulk. Available in White or Pale Ivory. 🛒

**WHYTE & IVORY**, exclusively available through Rowley®.

# Style: Eclectic

Our interpretation of Eclectic style revels in a vibrant fusion of diverse design influences. Fearlessly mixing patterns, colors, and textures, this style is a celebration of individuality and creativity, resulting in a truly unique and captivating space.



Create a one-of-a-kind *accent chair* by upholstering it with stylish Welt Cord ☞ trims and Metal Bead Chain ☞ on the back, adding a truly unique touch.



Fabricate fun *floor pillows* with button details that make the space warm, cozy & inviting. ▷



*header style*

Pair ripplefolds ↓ with bold patterns or textures for a unique and fun design. Enhance with mixed media finials from our AriA® Artisan Collection to elevate the eclectic style. 🛒



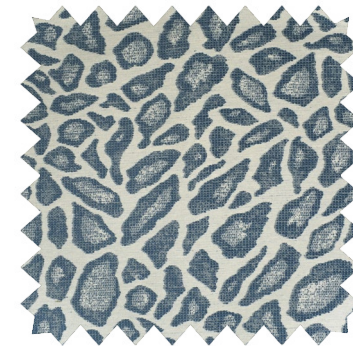
Enhance drapery panels with *grommets* along the leading edge, like our Brass Square Grommets set as diamonds for added flair. 🛒

## types of fabrics



RMCOCO  
Chin Chin / Cobalt

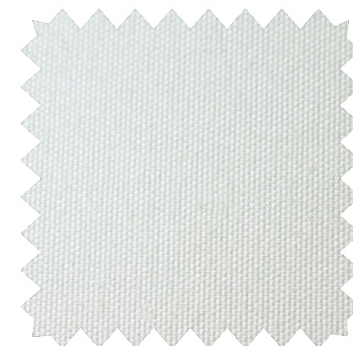
*patterned cotton* fabrics like ikat or batik are favored in eclectic style, infusing color and interest into a space. Mix and match for a playful and vibrant look.



Greenhouse  
Crypton Home Performance Fabrics®  
S2381 Blue

*animal prints* offer a fun and unique way to inject personality into an eclectic interior. Whether it's zebra stripes or leopard spots, these prints can be creatively used in upholstery and throw pillows, adding character to any space.

## *revolution blackout lining*



100% polyester microfiber substrate with 3 pass blackout. Innovative reversible lining. Available in White/Pale Ivory. 🛒

**WHYTE & IVORY**, exclusively available through Rowley®.

# Style: Coastal

Immerse any space in the tranquility of our Coastal style, a fusion of beach-inspired serenity and refined design. With airy atmospheres, natural textures, and soothing hues, this style captures the essence of coastal living.

Our *relaxed roman shade* features an elegant pleat and a curved bottom edge.

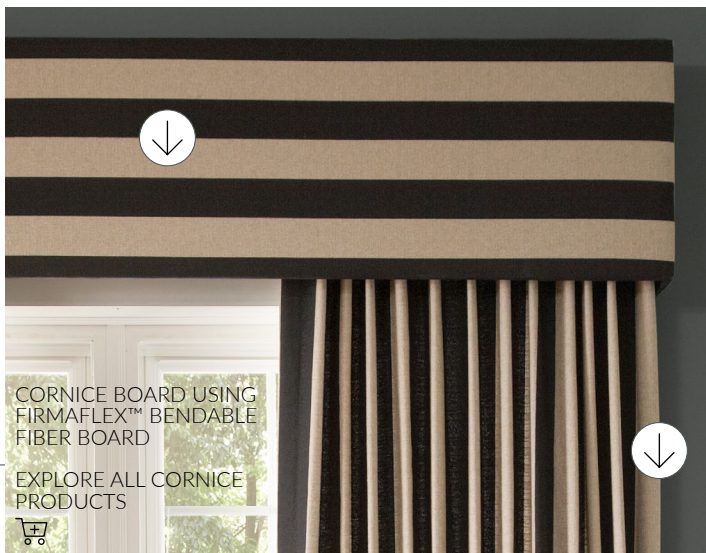
Aria<sup>®</sup>  
Abode  BLOWN GLASS  
BALL FINIAL  
BRUSHED  
BRONZE



*euro pleat*  
drapery panels offer a clean and tailored look, effortlessly coordinating with all types and sizes of decorative drapery hardware. 



Create bold cushions and pillows ↓ using  
*outdoor fabric + thread.* 🛒



CORNICE BOARD USING  
FIRMAFLEX™ BENDABLE  
FIBER BOARD

EXPLORE ALL CORNICE  
PRODUCTS



*header style*

Pencil pleat panels ↓ add texture and elegance to any room and have been in style for centuries. Add a cornice to your window design to make an even bigger statement. ↓



Incorporating *italian stringing* into panel fabrication allows the lower portion to gracefully open in soft folds, while keeping the header stationary. ↓

*types of fabrics*



RMCOCO  
Sailor's Knot / Nautical

For a literal interpretation of coastal style, choose fabrics with *nautical* prints or patterns. Explore seashell and coral patterns in assorted colors & shapes for added charm.



Stroheim  
Ostend Mist

Fabrics made from *natural materials* like linen, jute, and cotton can help create a relaxed, beachy vibe. Consider for curtains, upholstery or accent pillows.

*manchester sateen lining*




52C/48P blend. A true luxurious sateen weave lining. Water, stain & wrinkle resistant. Available in White, Pale Ivory, or Tusk. 🛒

**WHYTE & IVORY**, exclusively available through Rowley®.

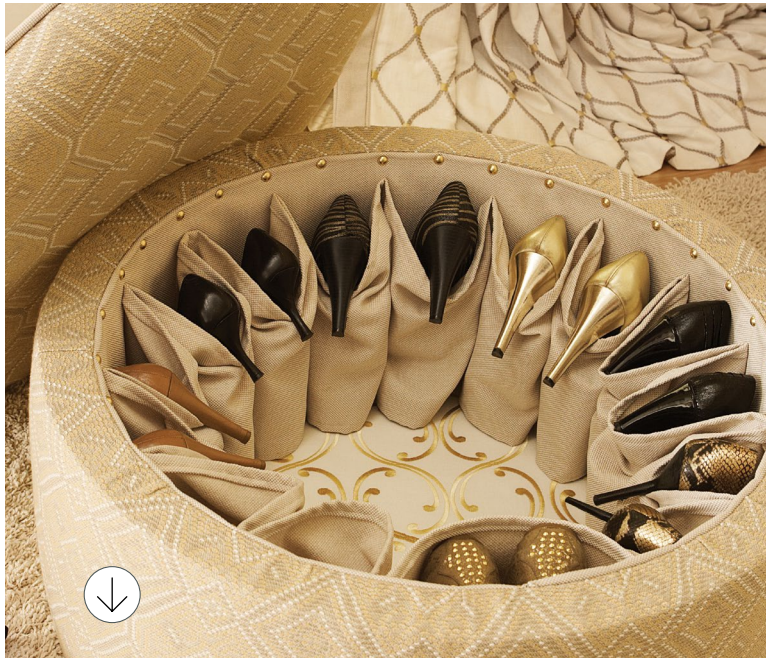
# Style: Hollywood Regency

Elevate any space with our Hollywood Regency style, a luxurious blend of opulence and modern sophistication. Inspired by the golden age of Hollywood, this style features bold colors, luxurious textures, and intricate details.




Add decorative *pillow edges* in contrasting fabrics to elevate your work.


See our selection of Metal or Gem upholstery nails. 



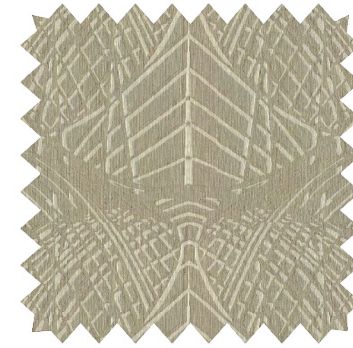
*header style*

Choose a smocked header for small, even pleats across the top of the panels, resulting in a full, elegant drapery. Utilize our Double Smocking Tape STW40 for easy application. Simply stitch to the top of the panel and pull the strings. 



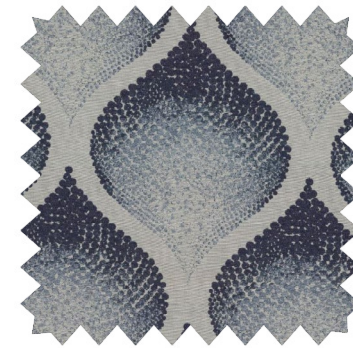
Fabricate your own *automated shades* ▸ using our R-TEC Automation® Motors & Smart Controls. For added convenience, pair them with automated draperies. 

*types of fabrics*



RMCOCO  
Stockholm / Driftwood

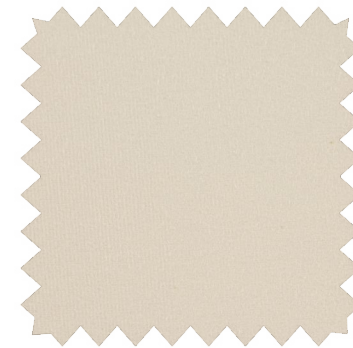
Choose *nature-inspired sheers* to introduce a light-filtering texture behind intricate stationary panels.




RMCOCO  
Ogee Stipple / Mood Indigo

*geometric prints* inject a bold and graphic element into a space, offering elegant texture and interest in upholstery, drapery, and throw pillows.

*buckingham thermal suede lining*



100% polyester dim-out. Provides good sound insulation, cuts down on fabric fading. Available in White or Pale Ivory. 

**WHYTE & IVORY**, exclusively available through Rowley®.

# Style: Bohemian

Embrace a free-spirited vibe with our Bohemian style, a celebration of individuality and eclectic charm. Infused with vibrant colors, patterns, and a mix of textures, this style invites you to create a space that reflects your unique personality.



See our selection of  
*duvet inserts.* 

Discover our range of *upholstery* tools and fabrics to craft the perfect Boho chair. 🛒

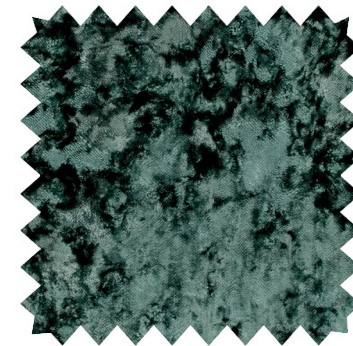


## Types of fabrics



RMCOCO  
Jagged Ikat / Birch

*ikat* is a dyeing technique that produces a blurred, tie-dye effect on fabric, popular in Bohemian design for its earthy, organic feel.



Clarke & Clarke Crush  
F0650/08 Cloud

*velvet* introduces texture and depth to a bohemian space, commonly used for furniture upholstery, throw pillows, and curtains, imparting a luxurious feel.



PTH  
PARIS TEXAS  
HARDWARE™

MONET FINIAL  
IN BLUSH  
🛒

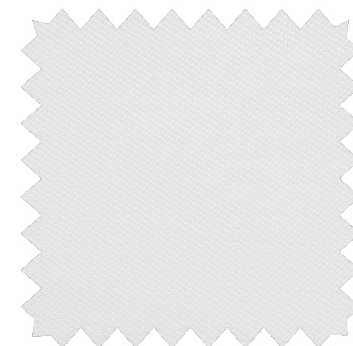
RMCOCO  
TRIBAL THREADS  
PAINTED SANDS

Vary the sizes & shapes of *pillow inserts* to embrace the cozy vibe. 🛒

## header style

Pair a lively fabric with the sleek appearance of a box pleats, tacking along the top of the pleat header. For a wide assortment of thread colors, use our Gütermann Polyester Thread TG1M/, also available to special order. 🛒

## oxford everyday lining



70P/30C blend. Great as an everyday, economy lining and for cornice/dust board wraps. Available in White or Pale Ivory. 🛒

**WHYTE & IVORY**, exclusively available through Rowley®.

# Capture & Connect

#RowleyWorkroom

 @RowleyCompany

our vast *portfolio*  
offers over 15,000 products

---

*same day shipping*  
on orders placed before 3 PM ET

 Rowley<sup>®</sup>