

Transitional Pillow Collection with Performance Fabrics

Elevate your pillows to the next level using creative design and fabrication methods. Work with texture and pattern to create unique transitional pillow designs.



Materials & Supplies

Rowley Products

Pillow Template - Standard

Item

[PF10](#)

R-TEX High Quality Polyester

Cluster Pillow Inserts

[PJ](#)

A&E Outdoor Thread

[T06K/](#)

Zippers by the Roll - Nylon

[ENR25](#)

Jumbo Wonder Clips

[QC42](#)

R-TEX Medium Polyester Welt Cord

[WC12](#)

Glass Head Straight Pins

[TP49](#)

Transitional Pillow Collection with Performance Fabrics: Step-By-Step Instructions

Pillow 1:

This pillow has a contrast edge using vinyl fabric to compliment the accent color in the main fabric. The seam between the contrast edge and the main pillow fabric includes the zipper.



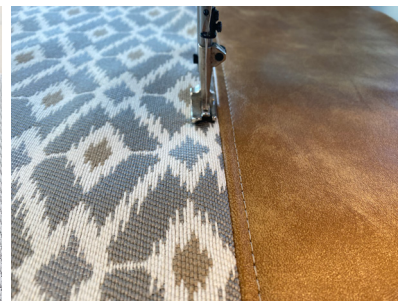
Measure & Make Your Cuts:

- 1 Measure the pillow insert and cut the fabric the same size as the pillow insert. This will create a pillow cover that will be snug.
- 2 Cut the fabrics so that once seamed together they will measure the size of the pillow insert.



Prepare The Pillow Front:

- 3 For the pillow front, place the two fabrics right sides together.
- 4 Baste the two contrasting fabrics together using a $\frac{1}{2}$ " Seam Allowance (SA).
- 5 Finger press the seams open.
- 6 Prepare a zipper, cut 1" less than the pillow fabric.
- 7 Center the zipper over the seam.
- 8 Stitch both sides of the zipper in place.
- 9 Use a seam ripper to remove the basting stitch and expose the zipper.



Prepare The Pillow Back & Complete The Pillow:

- 10 For the pillow back, stitch the two contrasting fabrics together using a $\frac{1}{2}$ " SA.
- 11 Open the seam and top stitch.

- 12 Pin the pillow front to the pillow back and stitch all four sides of the pillow cover.
- 13 Clip the corners before turning the cover right sides out.
- 14 Place pillow insert inside to complete the pillow.



Pillow 2:

The edges have a thick edge which is accomplished by adding layers of interlining into the seam and then stitched around the edges after the pillow cover is completed.

The zipper is inserted on the back of the pillow using a separate strip of fabric, the zipper strip.

Measure & Make Your Cuts:

- 1 For a 22" x 22" pillow insert, cut one piece of fabric for the pillow front at 24" x 24".
- 2 Cut the pillow back at 24" x 23".
- 3 Cut the zipper strip for the back of the pillow at 24" x 3".



4

Prepare a zipper, cut a few inches wider than the pillow fabric.

5

Press up $\frac{1}{2}$ " along the bottom of the pillow back to the wrong side of the fabric. This will become the flap to cover the zipper.



Insert The Zipper & Stitch Pillow Front To Back:

6

Insert the zipper between the bottom of the pillow back section and the zipper strip.

7

Prepare a zipper a few inches wider than the pillow fabric.

8

Place the zipper over the flap, matching the edges of the zipper tape and the edge of the flap.

9

Stitch from one side of the pillow to the other side.

10

Pin the edge of the zipper strip to the edge of the other side of the zipper.

11

Stitch across to complete the zipper. Open the zipper.

12

Place the pillow front and back right sides together. Pin in place. Stitch around all four sides of the pillow cover using a 1" SA.



Complete The Pillow Edges:

- 13 Mark and cut two layers of interlining, 2" wide x 24", to go inside the pillow edges.
- 14 Place the edges of the strips even with the outside edges of the pillow cover.
- 15 Following the previous 1" SA, stitch the strips to the pillow cover.
- 16 Trim the corners.
- 17 Turn the pillow cover right side out.
- 18 Stitch around the edges to create the thick edging.
- 19 Insert the pillow form to complete the pillow.



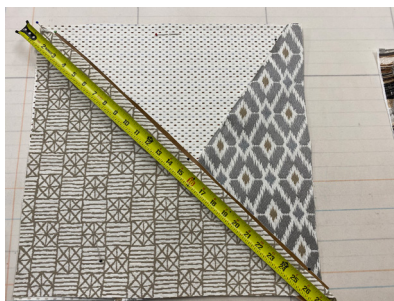
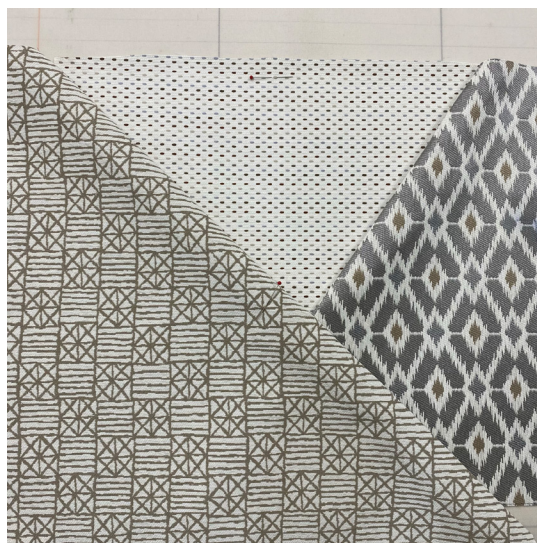
Pillow 3:

This reversible pillow is color blocked on the front using three fabrics separated by contrasting welt cord. The pillow back is one fabric.



Measure & Make Your Cuts:

- 1 For this 18" x 18" pillow, the pillow front main fabric and pillow back are cut at 19" x 19".
- 2 Determine the fabrics to be used.
- 3 Take a photograph to be sure you are happy with the pattern placement before cutting the fabrics.
- 4 Cut the contrasting fabrics based on the pattern placement. Be sure to add a SA along the inside (angled) edges.
- 5 Measure the diagonal seams for the amount of welt corded needed for the pillow.



Prepare The Pillow Front:

- 6 Cut and make the welt cord.
- 7 Stitch this to the angled pieces.
- 8 To ensure less bulk in the SAs, remove some of the welt from inside the casing before stitching to the angled pieces.
- 9 Layer the triangle sections over the main pillow front, starting with the undermost triangle.
- 10 Place pins between the welting and the fabric.
- 11 Carefully flip the triangle overlay over to expose the SA.
- 12 Stitch along the welt seam to join the triangle to the pillow front. Trim SAs to remove any bulk.



Complete The Pillow:

- 13 Lay the top triangle over the pillow section, pin, and stitch in the same way as the under triangle was stitched.
- 14 Prepare and insert a zipper in the pillow bottom.
- 15 Pin and stitch the remaining sides of the pillow.

16

Insert the pillow form to complete the pillow.

