

Fabricate Automated Goblet Pleat Panels

Learn to design low bulk header goblet pleat panels and program R-TEC Automation® draperies for a space that evokes calm and respite to nourish the spirit, featuring a soft, soothing color pallet.



Materials & Supplies

Rowley Products

W&I Cambridge Sateen Lining

Straight Edge Rulers

Professional Shears

Pen Style Chalk Markers

Waxed Silamide Skeins

John James Hand Sewing Needles

Drapery Weights

Buckram

Item

[LNW44/F](#)

[MR](#)

[CU24](#)

[WW13/](#)

[TWS23/](#)

[TP118](#)

[LW62](#)

[Buckram](#)

Automated Goblet Pleat Panels: Step-By-Step Instructions

Low Bulk Goblet Pleat Panels

These goblet pleats are sewn in a way that they form a curved bottom edge rather than a pleated bottom edge.



These goblet pleats need no stuffing.



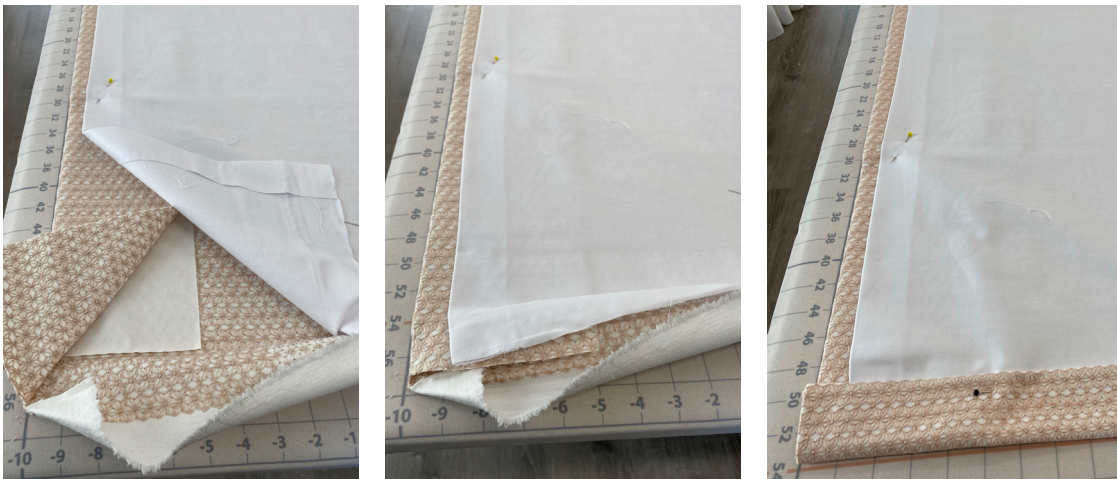
This embroidered fabric was thick, so a low bulk method was used for the drapery header.

- 1 Determine your cut widths for your drapery panels as normal.
- 2 Determine cut lengths as follows:
 - A. Face Fabric (FF) cut length = Finished Length (FL) + Bottom Hem Allowance + Top Hem Allowance (1 x Buckram Size)
 - B. Lining cut length = FL - 1" + Hem Allowance + 2"
- 3 Cut the fabric and the lining.
- 4 Seam widths together if necessary.
- 5 Hem the FF using your method of choice.
- 6 Hem the lining using your method of choice.



Table the Drapery Panels

- 7 Place the FF on the table, wrong side up.
- 8 Place the lining on the FF, wrong side down.
- 9 Match bottom hem seams.
- 10 Match seams if multi-width panels.



- 11 Table the panels on the table – press the top of the panel at the FL.
- 12 Place the buckram under the header fabric.
- 13 Fold, press and pin the lining approximately 1" below the top of the drapery.
- 14 Press side hems and close using your method of choice.

Mark & Prepare the Pleats and Spaces

- 15 Determine the pleats and spaces for the panels using your method of choice.
- 16 Place pins in the drapery header, indicating the pleats and spaces for the panel.

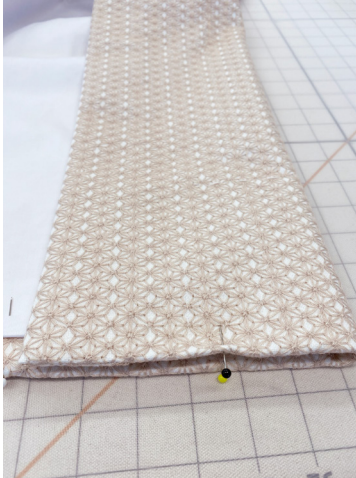


- 17 Prepare the goblets.
 - A. Use several strands of strong, color matched thread.
 - B. Knot one end of the thread, leaving a long tail.
 - C. Just below the buckram, sew a running stitch, from one side of the pleat to the other side.
 - D. Knot the other side of the thread, and clip leaving a long tail.
 - E. Do this for each pleat.



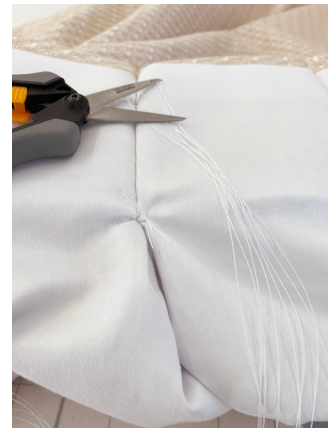
Sew the Pleats

- 18 Fold the pleats and pin.
- 19 Sew the back edge of the pleat, taking care to not sew over the thread tails.
- 20 Take the panel back to the table to complete the pleats.



Create the Goblets

- 21 From the back of the panel, pull the gathering stitches for each pleat.
- 22 Pull tight and knot. Square knot - right over left, left over right.
- 23 Clip threads, leaving small eyelashes.



Complete the Goblet Pleats

- 24 Dress the pleats from the front of the panel.
- 25 To eliminate the need to stuff the goblet pleats, add small tacks just behind the pleat, approximately ¼" from the seam.



Fabricate Automated Relaxed Roman Shades

These R-TEC Automation® Relaxed Roman Shades have three permanent folds at the bottom.

Materials & Supplies

Rowley Products

1 ½" Aluminum Roller
(or any size rollers for shades)

Flat Fiberglass Roman Shade Ribs

Shade Rib Cutter

Fabric Tubing for ¾" Solid Steel Rod

Cord Adjuster Orbs

Waxed Silamide Skeins

W&I Manchester Sateen Lining

W&I Hampton Cotton Interlining

Pen Style Chalk Markers

Item

[RC60](#)

[RSR13/6](#)

[RC30](#)

[RSR5/100](#)

[RW19](#)

[TWS23/](#)

[LNW40/F](#)

[LNW10/F](#)

[WW13/](#)



Automated Relaxed Roman Shades: Step-By-Step Instructions

Plan for the Roman Shade 'smile'

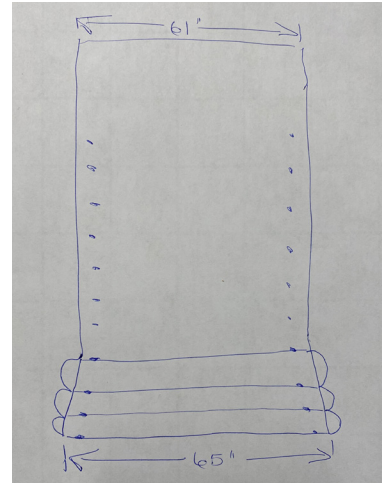
- To create the arched 'smile' for these Roman shades, pin a piece of weighted bead chain to the side of a worktable the finished width of the shade.
- The center of the bead chain should drop the amount you would like the curve (smile) to drop.



Measure the bead chain and this will become the width of the fabric for the bottom of the shade.

Basic Instructions for Relaxed Roman Shades

- 1 The side seams of these shades are pillow cased, so the face fabric and lining are stitched along the sides with a $\frac{1}{2}$ " Seam Allowance (SA).
 - To form the curve at the bottom of the shade, the bottom is cut at an angle up to the position above the three permanent folds where the fabric is cut the shade width plus 1".
 - Each of the permanent folds has 8" of fabric.
 - The Face Fabric (FF) turns up 4" to the back of the shade.
 - Flat Roman shade ribs are used in these shades, starting above the tack points of the permanent folds.
 - The cut length for the FF is the Finished Length (FL) of the shade + 25" for the folds at the bottom + enough fabric to staple to the top of the board.



Cut and Sew the Shade Fabric & Lining

The shade demonstrated here is inside mount and measures 60" x 66" FL.

- 2 Cut the face fabric and lining for the shades. Seam if necessary.



- 3 Place face fabric and linings right sides together. Pin along the bottom edge.

- 4 Sew a $\frac{1}{2}$ " SA along the bottom edge.



Mark the Permanent Folds & Side Hems

- 5 Trim a bottom SA if necessary.
- 6 Place the fabric and lining on the table with wrong sides together.
- 7 Fold 4" of the FF to the back of the shade. Press lightly.



- 8 Mark the bottom of the shade to the width needed for the bottom curve + the side seam allowances (65" for this shade).



- 9 Mark the top portion of the shade above the permanent fold allowance (61" for this shade).

- 10 Trim the shade to the Finished Width (FW) + the SA.



Sew the Side Seams, Create Folds & Attach Shroud Tube to the Back of Shade

- 11 Fold the shade fabric right sides together. Pin sides. Stitch a ½" SA.
- 12 Turn shade right side out. Press side hems.
- 13 Mark for the shroud tube tack points 2" from the outer edges of the shade.



- 14 Tack the bottom four tack points together to form the three permanent folds.
- 15 Tack the shroud tube to the back of the shade at each side of the shade, no more than 8" apart.



- 16 Insert a flat Roman shade rib above each tack point.



- 17 Prepare and attach a weight bar to the shade just above the permanent folds.

Completing the Shade

18 Press the shade to the FL.

19 Assemble the motorized shade tube.

Watch this YouTube video: [How to assemble an R-TEC Automation Shade Tube](#)



20 Attach the shade to the board.



21 Program the shade limits to complete the shade.

Watch this YouTube video: [How to program an R-TEC Automation Motorized Roman Shade](#)

