

Duvet Cover with Mitered Banded Edges

Learn to create a duvet cover with mitered banded edges and welt cord, from our Serene Bedroom.

Materials & Supplies

Rowley Products	Item #
Waxed Silamide Skeins	TWS23/
R-TEX Polyester Duvet Insert, Queen	DU73
R-TEX Cotton Welt Cord	WCC2/S
R-TEX Sew-On Hook	HT75/W
R-TEX Sew-On Loop	LT75/W

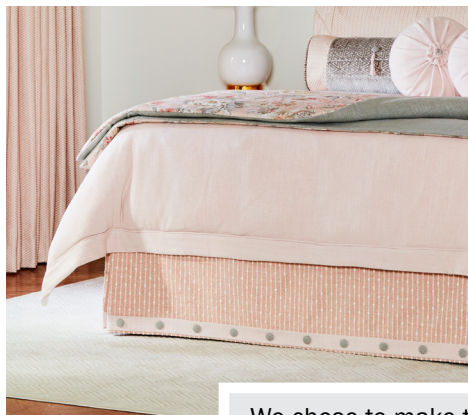


Duvet Cover: Step-By-Step Instructions

Duvet Cover with Mitered Banded Edges & Welt Cord

This duvet cover has subtle details that make a difference.

- Self welt separates the duvet cover body and the self banding edge with mitered corners.
- The duvet cover is reversible for versatility.
- For a proper fitting duvet cover, measure the duvet insert.
- If necessary, a flange may be added to the duvet cover to properly fit the bed.



We chose to make this duvet reversible between pink and white.

- 1 Measure the duvet insert.
- 2 Cut the Face Fabric (FF) and the reverse fabric to fit the cover, adding Seam Allowances (SA).



- 3 Seam the widths together.
- 4 Serge the seams for a clean finish.

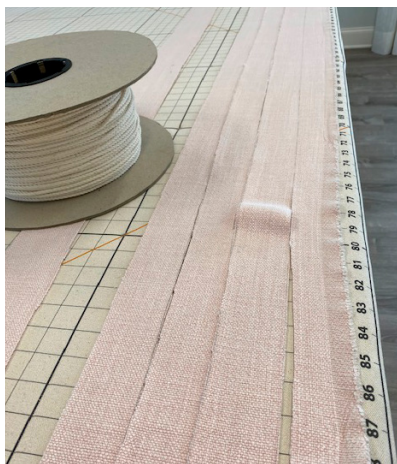


- 5 Press the seams to one side.
- 6 Trim excess fabric after joining the widths together if necessary.



Make Welt Cord & Prepare the Bands

- 7 Cut strips to make enough welt cord to go around three sides of the duvet cover body.
- 8 For a 3" banding, cut 4" strips of fabric long enough for the sides and foot of the duvet cover body.



- 9 Place the strips on the table and press in the mitered corners.
- 10 Pin and stitch the mitered corners, starting at the outer corner and stopping $\frac{1}{2}$ " from the inside corner.



- 11 Press the seam open. Clip the seam.



Sew the Welt & Mitered Bands to the Duvet Cover Body

- 12 Pin and stitch the welt cord to three sides of the duvet cover, leaving the top without welt cord.
- 13 Pin and stitch the mitered bands to three sides of the duvet cover.
- 14 Press the seams towards the bands.
- 15 Mark for placement of the snap tape to correspond with the snaps on the duvet insert. Stitch in place.



Sew the Welt & Mitered Bands to the Duvet Cover Body

- 16 Place the duvet cover top and bottom, right sides together. Pin, and stitch around three sides.
- 17 Clip away any bulk at the place where the welt and banding fabrics meet the duvet body.



- 18 Stitch around three sides of the duvet cover.
- 19 Turn right sides out and press the outer edges of the duvet cover.



- 20 Cut enough hook and loop sections you need for the closure.
- 21 Press the top edge to the inside of the duvet cover.
- 22 Pin the hook and loop sections to the inside edge.
- 23 Stitch in place.



Top Stitch Around the Flange

- 24 Pin the duvet cover around the flange to secure the top and bottom layer together.
- 25 Using a zipper foot, stitch between the welt cord and the flange.



26 Turn the duvet cover inside out and place on the table with the side with the snap tape facing up.

27 Place the duvet insert on the cover, matching up snaps. Snap in place.

28 Turn the duvet cover right sides out and close the Hook & Loop closures.



Change the look of your room by making the duvet reversible!

Three-Piece Tailored Bed Skirt with Bands & Buttons

Learn to assemble a three-piece tailored bed skirt with bands and buttons, part of our blissful bedding in our Serene Bedroom Roomscape, featuring soft, soothing colors to evoke calm and respite to nourish the spirit.



Materials & Supplies

Rowley Products

	Item #
R-TEX Sew-On Hook	<u>HT75/W</u>
R-TEX Sew-On Loop	<u>LT75/W</u>
R-TEX Iron-On Bonding Tape	<u>FT75</u>
Crimp Button Forms	<u>FCA45</u>
Waxed Silamide Skeins	<u>TWS23/</u>
Upholstery Pins	<u>TP32</u>
Basting / Tacking Gun	<u>ST26</u>
Basting / Tacking Fasteners	<u>ST29</u>

Three-Piece Tailored Bed Skirt: Step-By-Step Instructions

Three-Piece Tailored Bed Skirt

- This style bed skirt is made in three separate sections with a band at the top to attach to the box springs.
- There are no pleats along the sides.
- There are half pleats at each end of the two sides.
- There is a pleat at each end of the foot section plus enough to wrap around the sides of the bed about 9" - 10".

- 1 Cut Length for the Face Fabric (FF) = Finished Length (FL) of the skirt + 4" for the hem + 1" at the top
- 2 Cut Width for the Sides = Width of the Box Springs + 8"
- 3 Cut Width for the Foot = Width of the Box Springs at the Foot + 34"
- 4 Cut Length for the Lining = Finished Length (FL) of the Skirt + 1"

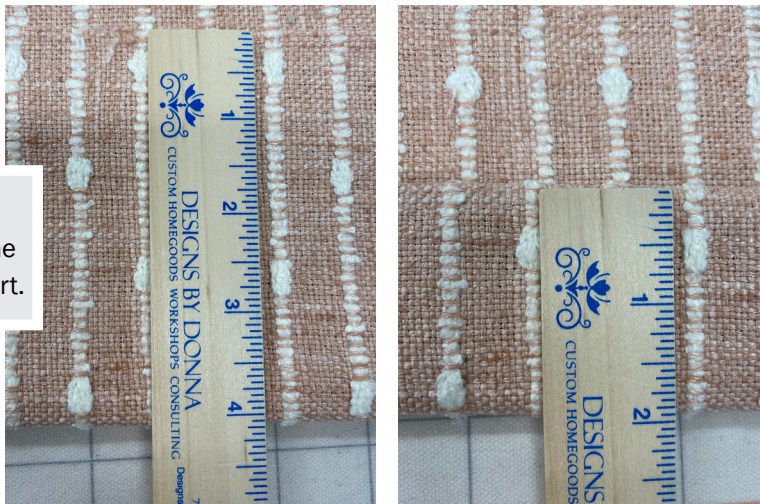
- 5 Cut Width for the lining = Same Width as the FF
- 6 Mark and cut your FF and Lining. Seam if necessary.

Press, Pin & Sew the Bed Skirt Hem

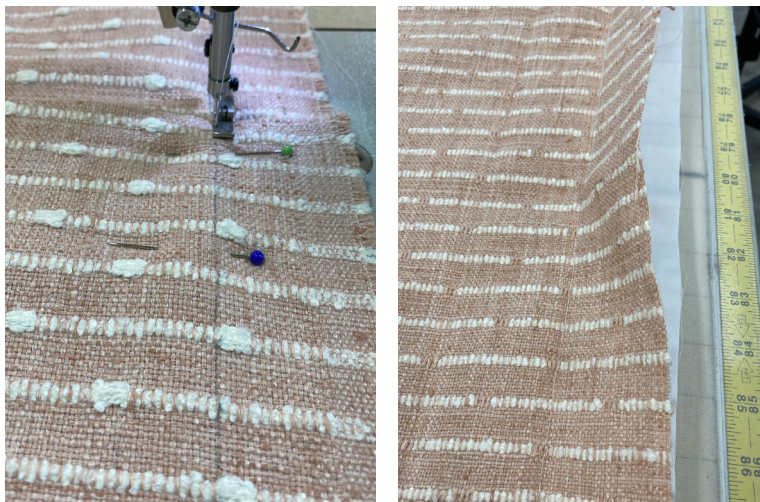
This skirt has a deep 2" hem, which allows the skirt to hang beautifully.

- 7 For the hem, press 4" at the bottom of the skirt toward the back side.
- 8 Tuck the raw edges in for a double 2" hem.

NOTE: The 4" marking is what will become the bottom hem of the skirt.



- 9 Place FF on the lining, right sides together.
- 10 Pin and stitch a 2" Seam Allowance (SA) along the bottom edge.



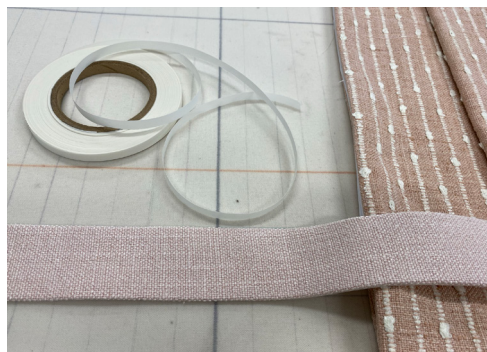
Press, Pin & Sew the Side Hems

- 11 Press the 2" bottom hem toward the FF.
- 12 Fold the skirt, right sides together, with the fold 4" fold line along the bottom.
- 13 Pin and stitch a ½" SA along the sides of the skirt pieces.
- 14 Turn the skirt pieces right side out and press.
- 15 Mark the FL on along the top edge of the skirt.
- 16 Leaving a ½" SA, remove any excess fabric along the top edge.



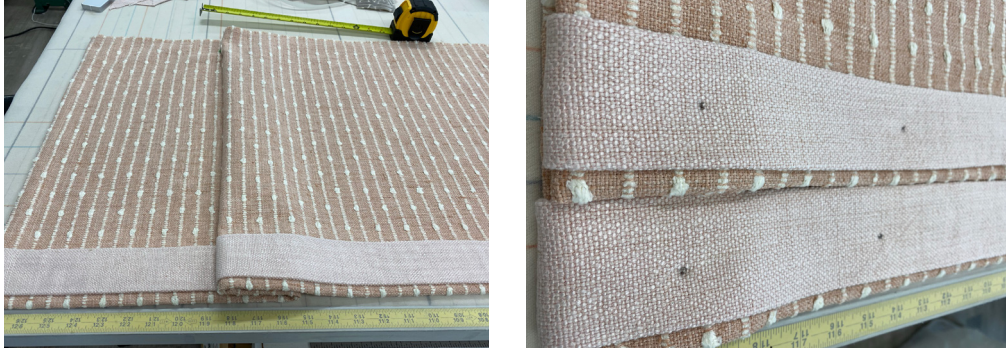
Prepare the Contrast Bands for the Bottom Edge of the Bed Skirt

- 17 For a 2" contrast band, cut fabric strips 4" wide and long enough for each side of the skirt. Try not to piece these bands because the seams will show.
- 18 Press ½" along each long edge to the back side of the bands.
- 19 Apply Iron-On Bonding Tape FT75 to each long edge on the back of the bands. Tuck in the raw edges on the short edges.
- 20 Remove the protective paper of the Iron-On Bonding Tape FT75 before pressing and steaming the bands to the skirt.
- 21 Use a long ruler to help in placement of the bands.



Add the Covered Buttons to the Bed Skirt

- 22 Fold the 3 ½" pleats on the side sections of the bed skirt towards the back side.
- 23 Fold the pleats of the foot section, starting in 9" from each edge and forming a 3 ½" pleat.
- 24 Mark the bands for the button placement.



- 25 Make enough fabric covered buttons for the bands.
- 26 Sew the buttons to the bed skirt bands.



Make the Waist Bands for the Top of the Skirt Sections

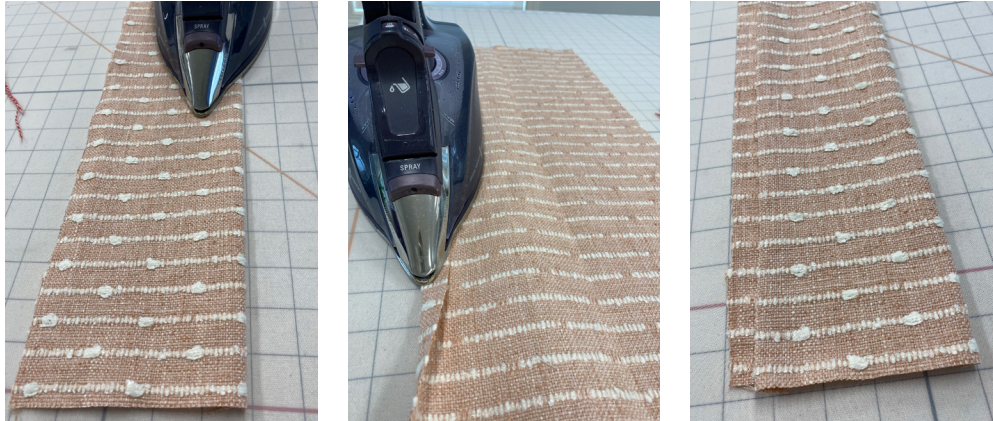
The waist bands measure 4" on the bed skirt.

- 27 Mark and cut the bands 10" x the width of the finished bed skirt sections.



28 Fold the bands in half lengthwise, wrong sides together and press.

29 Open up and press ½" along one long edge to the back side.



Add the Waist Bands to the Skirt Sections to Complete the Bed Skirt

30 Unfold the waist bands.

31 Place one band on the table right side up and place a skirt section face down matching the top edges.

32 Pin and sew this edge.

33 Press the seam toward the waist band.

34 Fold the band, right sides together and sew the sides of the waist band.

35 Fold the band right sides out and take the folded edge over the SA on the back side of the skirt.

36 Close using your method of choice.





Reversible Quilted Bed Throw

Learn to fabricate a reversible quilted bed throw, perfect for added style on the bed or a coverlet for a blissful nap in our Serene Bedroom Roomscape.



Materials & Supplies

Rowley Products

Polyester Batting

Item

[PF78](#)

Waxed Silamide Skeins

[TWS23/](#)

Glass Head Straight Pins

[TP49](#)

Curved Needles

[TP75](#)

Reversible Quilted Bed Throw: Step-By-Step Instructions

Reversible Quilted Bed Throw

- The bed throw for this Roomscape finishes at 80" x 60", allowing it to fall over the sides of the bed and fold in thirds for a generous look on the bed. This also allows it to be a coverlet to cover up with for a nap.
- For the quilted appearance, a thick Dacron was used for the filler.
- Hand tacking with color blended threads adds interest on the reversible side of the throw.



Prepare, Cut & Seam the Bed Throw Fabrics

- 1 Determine the finished size for your bed throw, figure pattern placement if necessary.
- 2 Cut and sew fabric widths together.
- 3 Trim Seam Allowances (SA).



Seam the Top to the Bottom & Add Dacron to the Bed Throw

- 4 Press SAs to one side.
- 5 Place fabrics right sides together and pin.
- 6 Stitch around all four sides, leaving a hole for turning.
- 7 Place the throw on a piece of Dacron, cut to the size of the bed throw.
- 8 Before pinning and sewing, clip the corners of the Dacron.
- 9 Sew the Dacron to the bed throw, keeping the stitching within the SA.



Hand-Tack the Layers Together to Complete the Bed Throw

- 10 Turn the bed throw right sides out and close the hole using your method of choice.
- 11 Lay the bed throw on the table and mark for the tack points.
- 12 Using several strands of strong thread, use a curved needle to tack the layers together.
- 13 Use a square knot to tie the threads.
- 14 Clip the threads, leaving short eyelashes.

