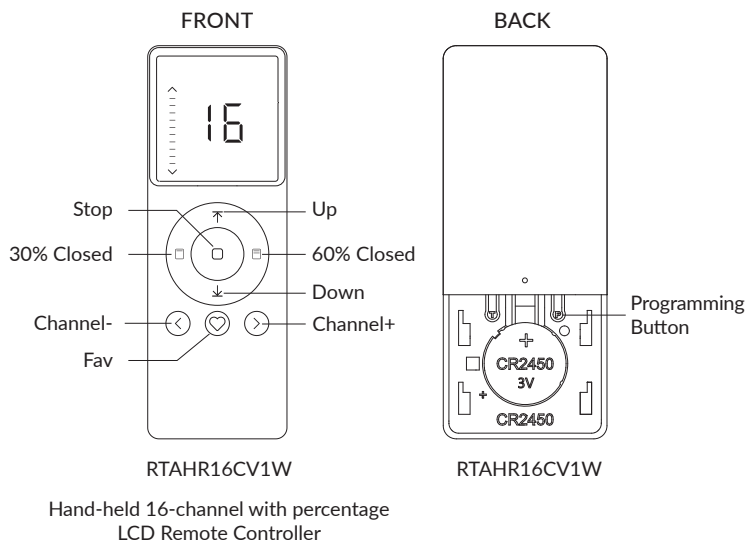


# RTAHR16CV1W

## 16-channel LCD Remote Controller

### User Manual

#### 1. PRODUCT DIAGRAM



#### 2. REMOTE SPECIFICATIONS

|                   |                |
|-------------------|----------------|
| Battery Type      | CR2450*3V*1    |
| Work Temperature  | 14°-122°F      |
| Radio Frequency   | 433.92M±100KHz |
| Transmit Distance | >=98.5' indoor |

#### 3. CAUTION

**WARNING:** Important safety and operation instructions to be read before installation and use.

- This product is intended for indoor use only. Do not expose the remote to moisture or extreme temperatures.
- If the remote becomes less responsive and has a shorter transmission range, please check whether the battery needs to be replaced.
- Use or modification outside the scope of this instruction manual will void warranty.
- When the battery voltage is too low, the orange LED will flicker during operation.
- Please properly dispose of used batteries and replace with only the specified battery type.

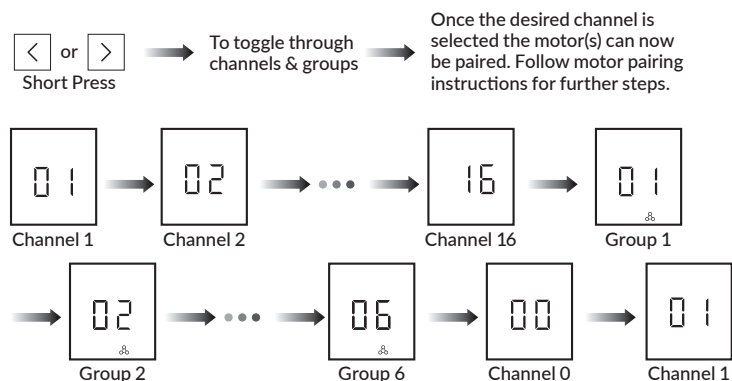
**⚠ WARNING**

- **INGESTION HAZARD:** This product contains a button cell or coin battery
- **DEATH** or serious injury can occur if ingested.
- A swallowed button cell or coin battery can cause **Internal Chemical Burns** in as little as **2 hours**.
- **KEEP** new and used batteries **OUT OF REACH of CHILDREN**
- **Seek immediate medical attention** if a battery is suspected to be swallowed or inserted inside any part of the body.

#### 4. INSTRUCTIONS

##### A. CHANNELS & GROUPS TOGGING

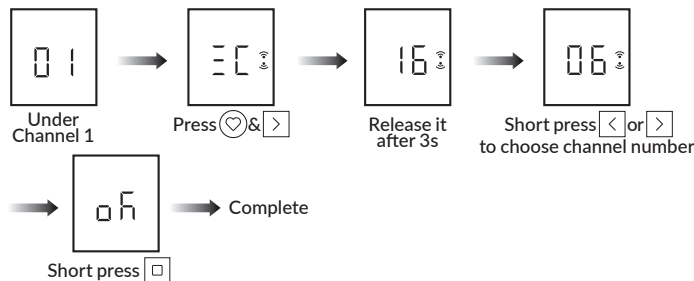
First select the desired channel to pair with your motor(s).



Note: A maximum of 15 motors can be added to one channel. All motors added to the same channel will operate simultaneously. Channel 0 is the group control for all the channels.

Follow the motor pairing instructions first before completing the following steps below:

##### B. HIDE UNUSED CHANNELS

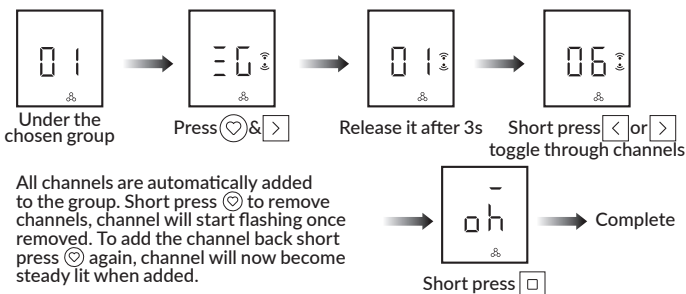


Note: Max&Min number is 16&1 when it's set under channel 1-16.

# 16-channel LCD Remote Controller

## User Manual

### C. ADD CHANNEL IN GROUP SETTING



All channels are automatically added to the group. Short press to remove channels, channel will start flashing once removed. To add the channel back short press again, channel will now become steady lit when added.

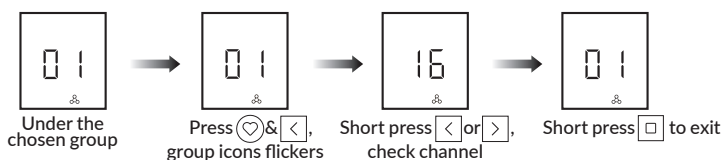
Note: Channel in groups setting is under GROUP 1-6.

### D. HIDE UNUSED GROUPS



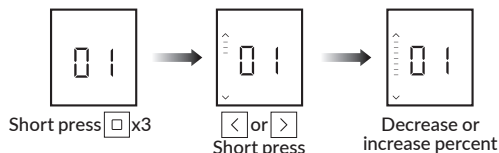
Note: Max&Min number is 6&0 when it's set under channel 0

### E. CHECK THE CHANNELS IN GROUPS



Note: LCD will show "EC" if there is no channel in group.

### F. POSITION PERCENT SETTING

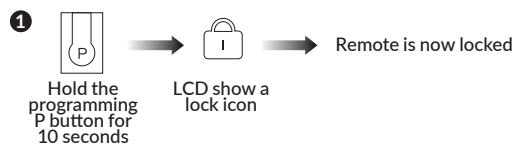


Stop on the desired percentage down and wait 3s. The shades will move to the chosen percentage down position.

Note: All the shades under same channel or group will run to same position after percentage setting.

### G. LOCK REMOTE

Locking the Remote: Prohibits any programming or settings from being changed on the Remote.



2 To unlock the remote and allow programming once again, repeat the steps above.

### H. FOR OTHER OPERATIONS, PLEASE REFER TO THE MOTOR OPERATION INSTRUCTION