

Roman shade valance with the Skyline Easy Link System

Learn to fabricate modern Roman shade valance using the Skyline Easy Link System for a wide width.



Materials & Supplies

Rowley Products

Skyline Easy Link System
 Aluminum Roller / Tube - 1 ½"
 Cord Adjuster Orb
 Soft Shade Spacers
 Metal Sew-On Rings - Brass
 Soft Shade Roller Clips - 1 ½"
 Skirtex Stiffener
 Staple Puller Plier
 Upholstery Air Stapler
 71 Series Staples

Item

[RTMELKIT2](#)
[RC60/](#)
[RW19](#)
[CT55/11](#)
[ST16](#)
[RWRC112](#)
[SKX55/20](#)
[MH41](#)
[NSG10](#)
[NS33/E](#)

Roman shade valance with the Skyline Easy Link System: Step-By-Step Instructions

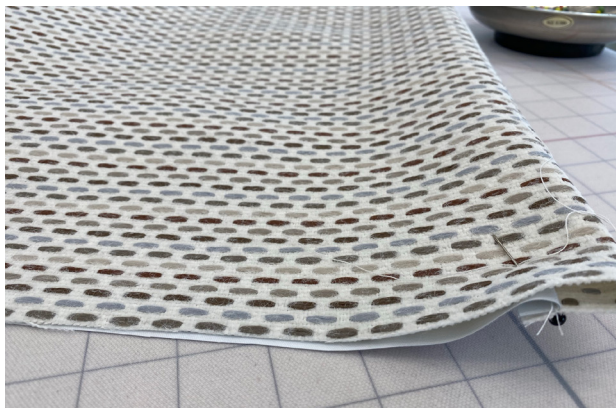
Prepare The Valance Fabric & The Lining:

- 1 For a finished length of 25", the fabric was railroaded.
- 2 The valance is installed behind drapery panels, so no returns were needed.
- 3 The cut width is equal to the width of the board plus two ½" Seam Allowances (SA) plus 1" workroom allowance.
- 4 Railroad the lining the same size.
- 5 Pin the face fabric and lining, right sides together, and stitch a ½" SA along the bottom edge.



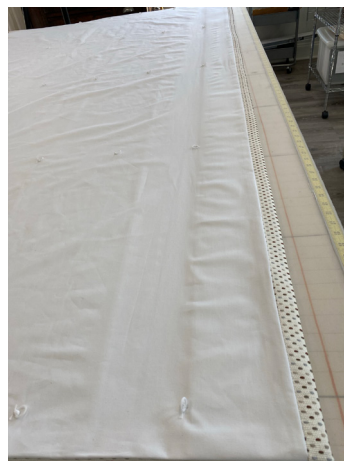
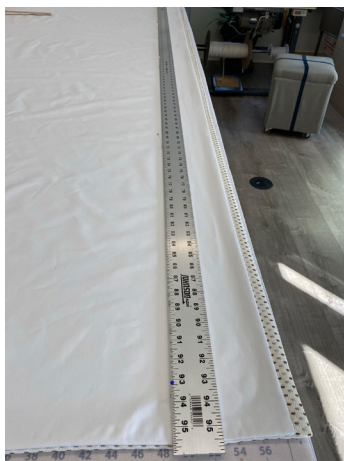
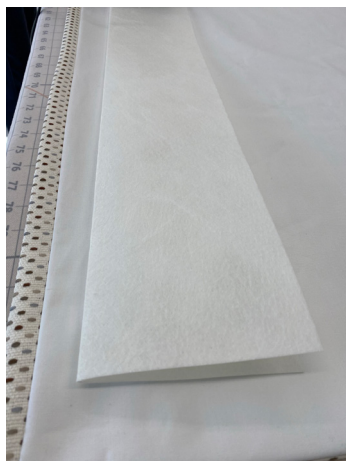
Stitch The Face Fabric & Lining Together and Press The Valance:

- 6 Press seam towards the face lining.
- 7 Sew the side seams by folding the face fabric up $\frac{1}{2}$ " from the bottom edge. Pin the lining and face fabric together and stitch a $\frac{1}{2}$ " SA.
- 8 Turn the valance right sides out. Press the bottom and sides of the valance.



Prepare The Valance Hem:

- 9 Cut a piece of Skirtex Stiffener 10" x the Finished Width (FW) of the valance. Press in half, matching the long edges. Crease the fold.
- 10 Place this inside the valance along the bottom hem.
- 11 The first set of rings will be placed above the 5" Skirtex. The vertical rows of rings will be spaced $7\frac{1}{2}$ " apart for a total of 5 vertical rows.
- 12 The side rings are placed 2" from each outer edge. Determine the horizontal placement of the rings. Mark for and sew the rings to the back of the shade.



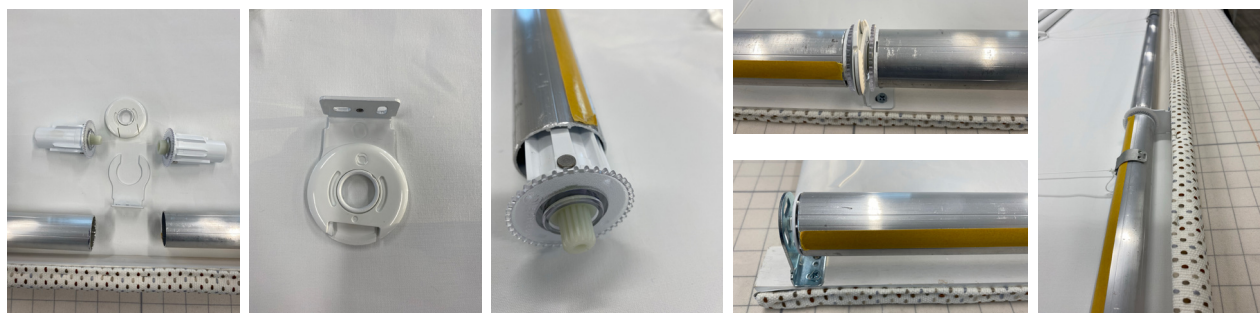
Prepare The Shade Ribs:

- 13 Cut enough Roman shade ribs for the shade.
- 14 Place a Roman shade rib inside the shade after sewing each row of rings.
- 15 Attach the shade to the board.
- 16 String the shade, inserting a Roman shade spacer in between each ring.



Prepare The Shade Tubes & The Skyline Easy Link:

- 17 Cut the tubes for the shade.
- 18 Assemble the Skyline Easy Link.
- 19 Snap the center section into the Skyline Bracket.
- 20 Attach the bracket to the board.
- 21 Insert the male and female sections into the shade tube and join together.
- 22 Place the shade tubes into the brackets.
- 23 Complete stringing the valance cords into shade clips.





Visit Our Website to Explore

R-TEC AUTOMATION Education Library

Gain the competitive edge through
R-TEC Automation® education and training

