

Pillow Shams with Quilting Detail

Learn to fabricate pillow shams with a quilting detail with no-show seams on the inside.



Materials & Supplies

Rowley Products

Professional Shears

Item

[CU24](#)

Pen Style Chalk Markers

[WW13/](#)

Waxed Silamide Skeins

[TWS23/](#)

R-TEX High Quality Polyester Cluster

Pillow Inserts

[PJ272](#)

Glass Head Straight Pins

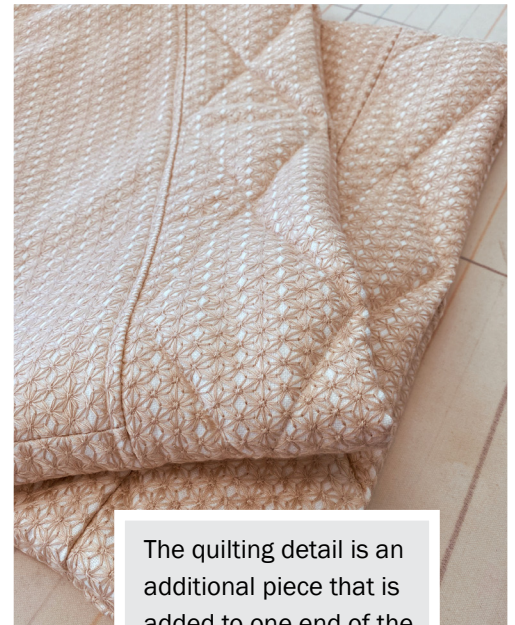
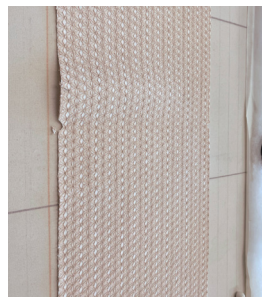
[TP49](#)

Pillow Shams with Quilting Detail: Step-By-Step Instructions

Pillow Shams with Quilting Detail

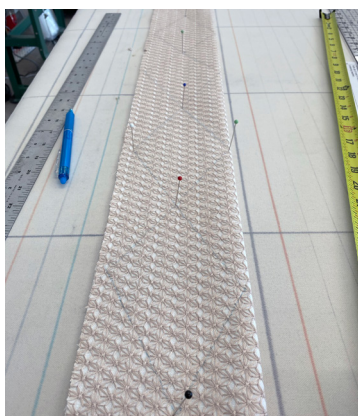
The pillow sham body will be cut the same size as the pillow insert for a snug fit.

- 1 Mark and cut a front and back for the pillow sham.
- 2 Cut lining for the pillow sham the same size as the pillow front and back.



The quilting detail is an additional piece that is added to one end of the pillow sham.

- 3 Pin and stitch the top seam of the pillow front and back.
- 4 Pin and stitch the top seam of the lining front and back.
- 5 For a 4" finished quilted band, cut a piece of fabric 10" wide and twice the size of the pillow insert, plus two ½" Seam Allowances (SA). For a 20" tall pillow insert, cut the band 10" x 41".
- 6 Fold the band in half matching the short ends and clip a notch indicating the center.
- 7 Fold the band in half matching the long ends, wrong sides in, and press.
- 8 Mark and draw the quilting pattern on the band using a disappearing fabric marking pen.
- 9 Insert a piece of Dacron inside the band.
- 10 Pin the raw edges and serge.



Sew the Quilting Detail to the Band & Sew to the Pillow Body

- 11 Pin and stitch the quilting detail.
- 12 Press the top seam in the pillow body and the lining open.
- 13 Pin and stitch the quilted band to the pillow body, matching the notch in the band to the center seam of the pillow body.



- 14 Pin the lining to the band and pillow body and stitch a $\frac{1}{2}$ " SA.
- 15 Press the lining away from the band.
- 16 Fold the pillow sham in half matching the edges.
- 17 Carefully stitch one half of the quilted band together from where it joins the pillow body to the fold line of the band. Leave the other half open for now.



Sew the Remaining Seams of the Pillow Sham

- 18 Fold the sham so that the pillow body right sides are together and the lining is right sides together. Pin.
- 19 Starting in one corner on the pillow body, stitch to the next corner, and pivot to sew to the place where the body and the lining come together. Be sure to keep the quilted band out of the way.
- 20 Continue stitching the lining to the bottom corner, turn and sew, but stopping to leave a hole for turning.
- 21 Turn the pillow sham right sides out.



Sew the Remaining Seams of the Pillow Sham

- 22 Press and close the hole in the lining.
- 23 Push the lining inside the pillow sham.
- 24 Press the lining seam.
- 25 Press the remaining seam of the band and close using your method of choice.

