

Construct a Lightweight Headboard

Walk through how to construct a lightweight headboard with a hinge for easy transport or shipping.

Materials & Supplies

Rowley Products

	Item #
Headboard Cleat	AG76
Polyester Batting	PF78
FirmaFlex™ Z-Folded Bendable Fiber Board	BP48/72Z
Upholstery Air Stapler	NSG10
71 Series Staples	NS33/E
Mending Plates	MP40
Skirtex Stiffener	SKX55/100
Fringe Adhesive	FA10
Gimp Trim	G20S/



Construct A Lightweight Headboard: Step-By-Step Instructions

Construct A Lightweight Headboard

- This headboard is designed and fabricated with a horizontal hinge in order to be able to be shipped to the client.
- The headboard is lightweight and is easily hung on the wall with headboard cleats.
- Mending plates to secure the headboard at the hinge were included with the headboard before shipping.
- ½" sanded plywood was used as the base for this headboard, but FirmaFlex™ would have worked great also.

- 1 Determine the size for your headboard and the placement for the hinge.
- 2 Cut the wood for the headboard (or have a home store cut this for you).
- 3 Mark the corners and cut.

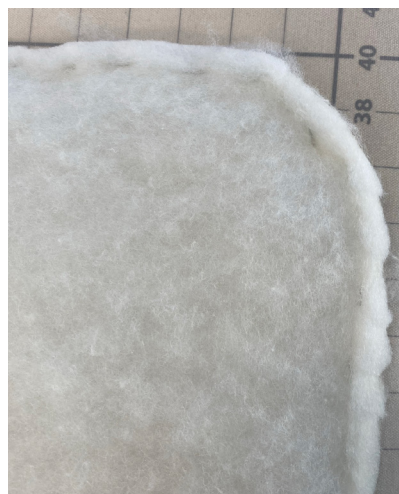


- 4 Cut a piece of Skirtex 10" x the length of the headboard. Fold the Skirtex in half lengthwise and crease.
- 5 Apply a good amount fringe adhesive to the Skirtex hinge.
- 6 Place the Skirtex, adhesive side down over the split of the plywood. Weight the Skirtex down until the adhesive is dry.



Add Batting & Lining to the Front of the Headboard

- 7 Layer pieces of batting over the front of the headboard base, with smaller pieces in the center.
- 8 Staple the top piece of batting around the perimeter of the headboard base.
- 9 Clip the edges of the batting close to the edges of the plywood.



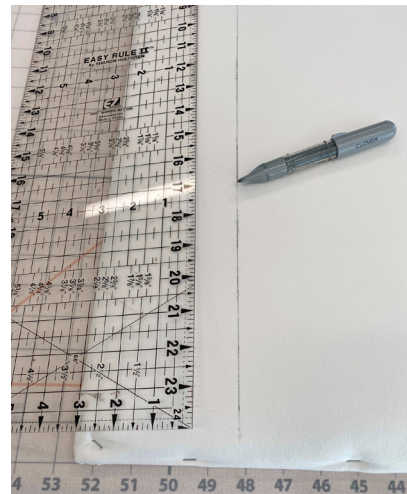
- 10 Cut a piece of lining large enough to wrap around the plywood and staple to the back.



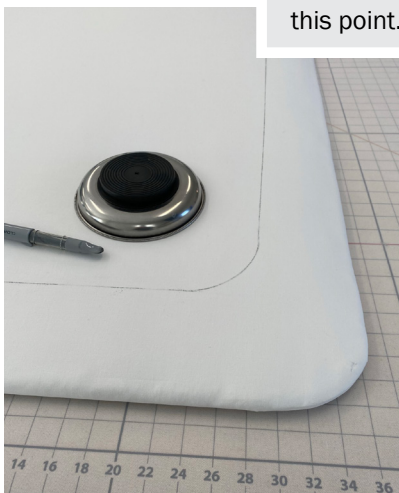
Mark for Trim Placement on the Headboard

This headboard will have a decorative trim set in from the edge.

- 11 Mark the placement for the trim using a ruler and chalk marker.
- 12 Create the curve at the corners and mark.
- 13 Staple along the line all the way around the headboard.



Take note of where the hinge is so that no staples are placed at this point.



Cut & Seam the Face Fabric (FF) for the Headboard

- 14 Determine fabric pattern placement for the headboard.
- 15 Cut the fabric large enough to wrap around the headboard for stapling.
- 16 Seam the fabric if necessary. Clip seams. Press the seams.
- 17 Place the fabric over the padded headboard.
- 18 Before stapling, take a photo to be sure you are pleased with the pattern placement.



- 19 Pin the fabric to the headboard.



Staple the Fabric to the Back of the Headboard

20 Flip the headboard, face down, and staple the fabric to the back side of the headboard.

21 Cover the back of the headboard with lining.

22 Cover the staples with a piece of gimp.



23 Attach one half of the pair of headboard cleats to the back of the headboard.

24 On the front of the headboard, place a line of staples at the trim placement, creating an indentation to attach the trim.



Make the Trim Embellishment & Attach to the Headboard

The trim is made from a bias strip of loosely woven fabric.

25 Cut enough 2" strips bias fabric to go around the trim placement on the headboard.

26 Stitch the strips together. Press seams open.

27 Fold in half lengthwise and press.

- 28 Stitch a ¼" Seam Allowance (SA) along the pressed edge.
- 29 Using a stiletto, separate the fabric fibers to fringe the bias strips.
- 30 Use fringe adhesive along the staples to attach the fringe to the headboard.



Install the Headboard Using Headboard Cleats

- 31 Mark the placement for the headboard on the wall.
- 32 Attach the headboard cleats to the wall and headboard.
- 33 Hold the headboard slightly above the cleat on the wall. Lower the cleat on the back of the headboard into the cleat on the wall.

