

Three-Piece Tailored Bed Skirt with Bands & Buttons

Learn to assemble a three-piece tailored bed skirt with bands and buttons, part of our blissful bedding in our Serene Bedroom Roomscape, featuring soft, soothing colors to evoke calm and respite to nourish the spirit.



Materials & Supplies

Rowley Products

Rowley Products	Item #
R-TEX Sew-On Hook	HT75/W
R-TEX Sew-On Loop	LT75/W
R-TEX Iron-On Bonding Tape	FT75
Crimp Button Forms	FCA45
Waxed Silamide Skeins	TWS23/
Upholstery Pins	TP32
Basting / Tacking Gun	ST26
Basting / Tacking Fasteners	ST29

Three-Piece Tailored Bed Skirt: Step-By-Step Instructions

Three-Piece Tailored Bed Skirt

- This style bed skirt is made in three separate sections with a band at the top to attach to the box springs.
- There are no pleats along the sides.
- There are half pleats at each end of the two sides.
- There is a pleat at each end of the foot section plus enough to wrap around the sides of the bed about 9" - 10".

- 1 Cut Length for the Face Fabric (FF) = Finished Length (FL) of the skirt + 4" for the hem + 1" at the top
- 2 Cut Width for the Sides = Width of the Box Springs + 8"
- 3 Cut Width for the Foot = Width of the Box Springs at the Foot + 34"
- 4 Cut Length for the Lining = Finished Length (FL) of the Skirt + 1"

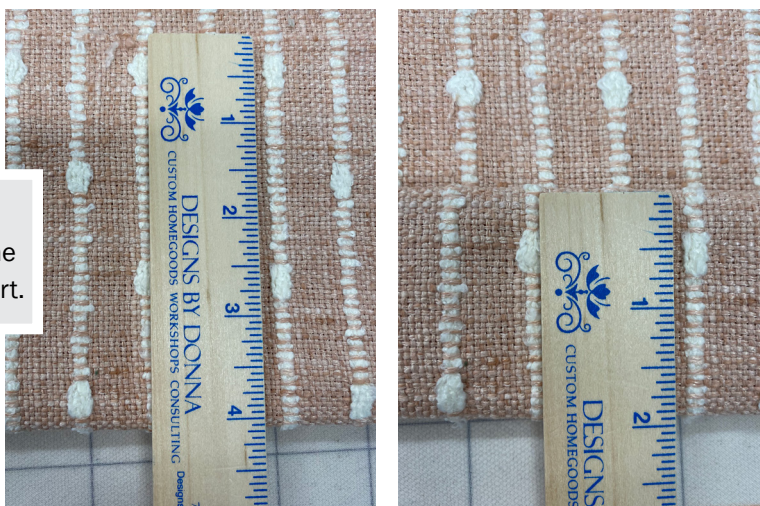
- 5 Cut Width for the lining = Same Width as the FF
- 6 Mark and cut your FF and Lining. Seam if necessary.

Press, Pin & Sew the Bed Skirt Hem

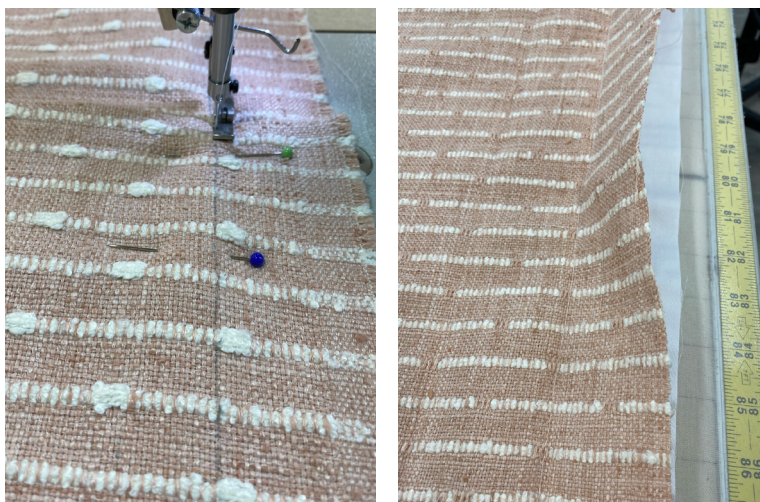
This skirt has a deep 2" hem, which allows the skirt to hang beautifully.

- 7 For the hem, press 4" at the bottom of the skirt toward the back side.
- 8 Tuck the raw edges in for a double 2" hem.

NOTE: The 4" marking is what will become the bottom hem of the skirt.



- 9 Place FF on the lining, right sides together.
- 10 Pin and stitch a 2" Seam Allowance (SA) along the bottom edge.



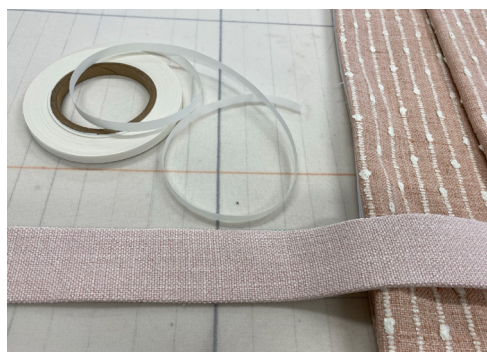
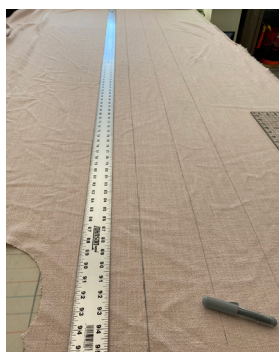
Press, Pin & Sew the Side Hems

- 11 Press the 2" bottom hem toward the FF.
- 12 Fold the skirt, right sides together, with the fold 4" fold line along the bottom.
- 13 Pin and stitch a $\frac{1}{2}$ " SA along the sides of the skirt pieces.
- 14 Turn the skirt pieces right side out and press.
- 15 Mark the FL on along the top edge of the skirt.
- 16 Leaving a $\frac{1}{2}$ " SA, remove any excess fabric along the top edge.



Prepare the Contrast Bands for the Bottom Edge of the Bed Skirt

- 17 For a 2" contrast band, cut fabric strips 4" wide and long enough for each side of the skirt. Try not to piece these bands because the seams will show.
- 18 Press $\frac{1}{2}$ " along each long edge to the back side of the bands.
- 19 Apply Iron-On Bonding Tape FT75 to each long edge on the back of the bands. Tuck in the raw edges on the short edges.
- 20 Remove the protective paper of the Iron-On Bonding Tape FT75 before pressing and steaming the bands to the skirt.
- 21 Use a long ruler to help in placement of the bands.



Add the Covered Buttons to the Bed Skirt

- 22 Fold the 3 ½" pleats on the side sections of the bed skirt towards the back side.
- 23 Fold the pleats of the foot section, starting in 9" from each edge and forming a 3 ½" pleat.
- 24 Mark the bands for the button placement.



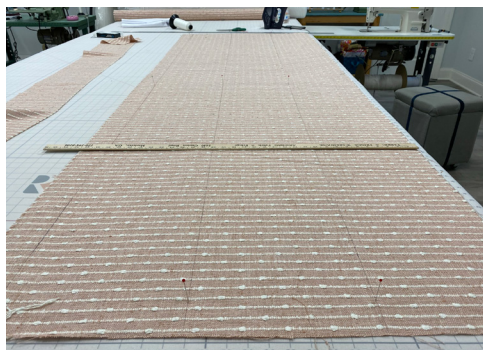
- 25 Make enough fabric covered buttons for the bands.
- 26 Sew the buttons to the bed skirt bands.



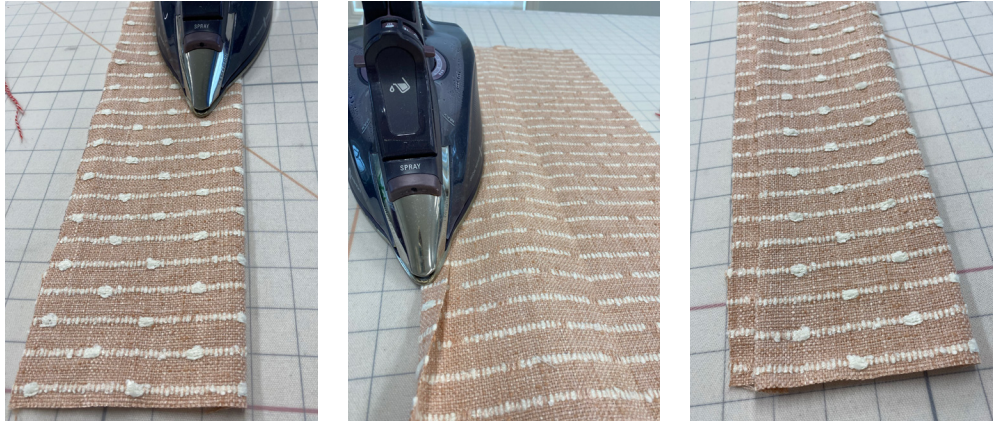
Make the Waist Bands for the Top of the Skirt Sections

The waist bands measure 4" on the bed skirt.

- 27 Mark and cut the bands 10" x the width of the finished bed skirt sections.



- 28 Fold the bands in half lengthwise, wrong sides together and press.
- 29 Open up and press ½" along one long edge to the back side.



Add the Waist Bands to the Skirt Sections to Complete the Bed Skirt

- 30 Unfold the waist bands.
- 31 Place one band on the table right side up and place a skirt section face down matching the top edges.
- 32 Pin and sew this edge.
- 33 Press the seam toward the waist band.
- 34 Fold the band, right sides together and sew the sides of the waist band.
- 35 Fold the band right sides out and take the folded edge over the SA on the back side of the skirt.
- 36 Close using your method of choice.



