

# How-To Guide



FABRICATE A

## STAR-SHAPED TREE SKIRT

Tree skirts don't always have to be round. For this skirt, we found a photograph online for a star-shaped skirt and fell in love with it. To transfer the sizes of the photograph and make a life size pattern, we used a Picture Enlarger, which made the pattern making a breeze.



## PRODUCTS USED

### ROWLEY PRODUCTS

### ITEM #

Picture Enlarger

DYC11

Whyte & Ivory, Manchester Sateen Wide Lining, Pale Ivory

LNW101/

Jumbo Wonder Clips

QC42

Crimp Button Forms, #45

FCA45

Grommet / Button Press

GL

John James Hand Sewing Needles, Long Darners

TP110

Gütermann Polyester Thread

TG1M/

## Find Inspiration

This tree skirt inspiration came from a quilting pattern found online.

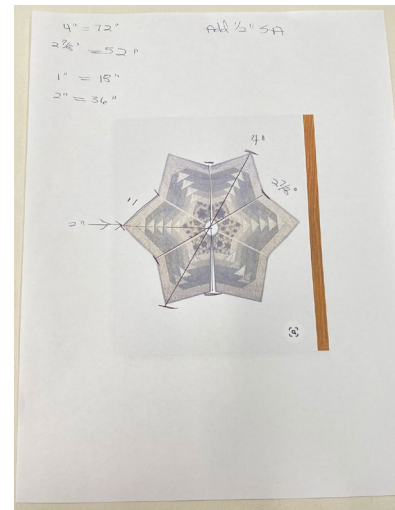
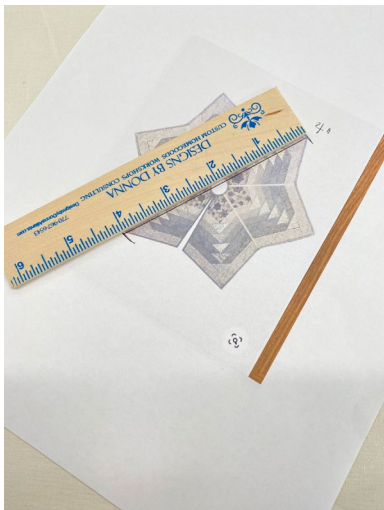


# Enlarge to Scale

A Picture Enlarger DYCI1 is used for enlarging a picture to scale by figuring the percentage of the original size.



- 1 Measure any part of the treatment picture.
- 2 Determine what actual dimension you want to make the measurement from Step 1.
- 3 Locate the picture dimension on the inner wheel and align it with the actual dimension on the outer wheel.
- 4 As long as the calculator wheels are not moved, all other dimensions of the above referenced picture will be proportionate.

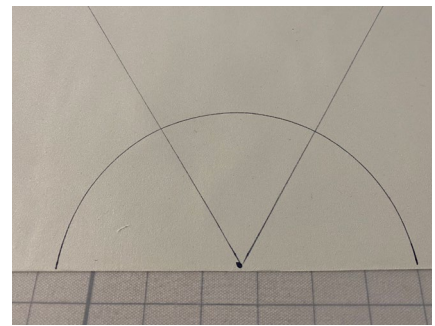
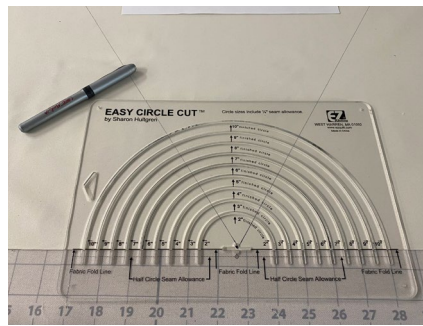


# Measure & Cut the Fabric

- Velvet fabric is used for this tree skirt.
- Make a life size pattern and cut the fabric.
- For this skirt, cut out six pattern pieces.
- For visual interest, the fabric sections alternated between up and down direction of the nap.

1 Transfer the new proportions to make a pattern.

2 Use a circle template to draw a circle at the top of the pattern piece.



3 Place the pattern on the fabric.

4 Add a 1/2" SA and cut out the fabric.

5 Remove the excess fabric at the top of the pattern piece for the circle.

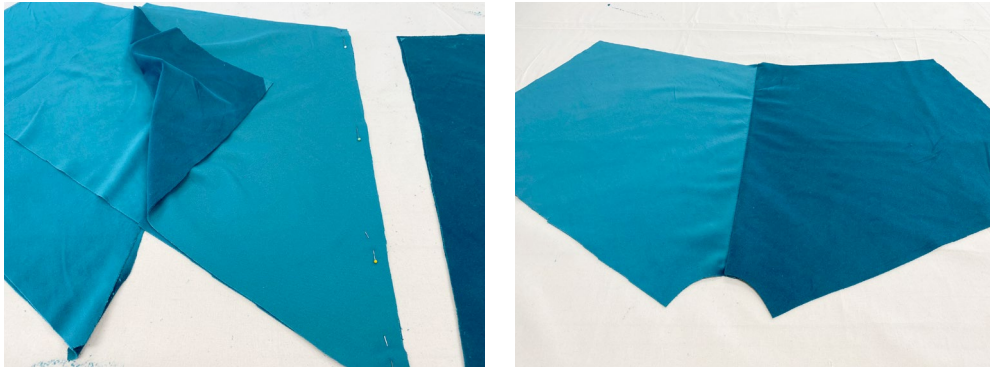




# Sew the Face Fabric (FF) Sections Together

1 Pin the sections together.

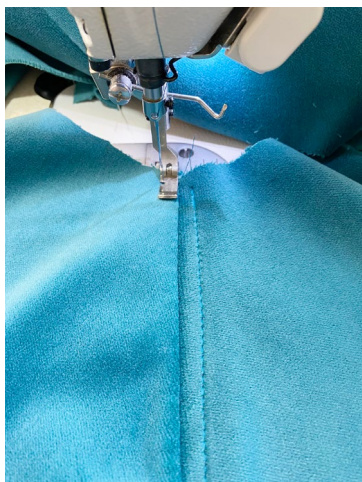
2 Notice the difference in the shading between the sections due to the alternating of the nap.



3 Press the SA open.



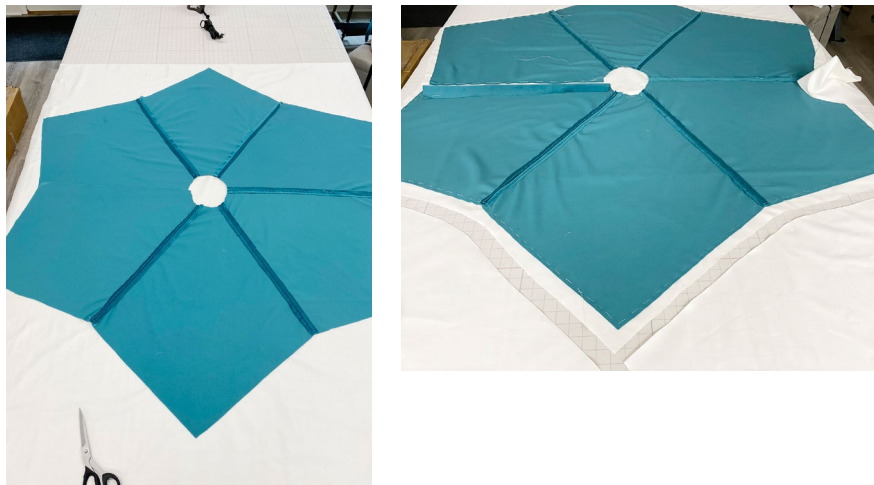
4 Top stitch to either side of the seam. This adds additional visual interest and may be omitted if you wish.



# Prepare & Sew the Lining to the Tree Skirt FF

Save time by not having to seam lining together by using double width lining.

- 1 Place the FF on the lining, right sides together.
- 2 Cut around the skirt face fabric leaving a few inches of the lining around the perimeter.



- 3 Use a basting stitch to join the two fabrics. Stitch leaving a hole for turning.
- 4 Remove the basting stitch prior to clipping into the inner corners.
- 5 Clip the outer corners and remove the excess lining from the perimeter of the skirt.



# Complete Sewing the Tree Skirt

1 Turn the tree skirt right sides out.

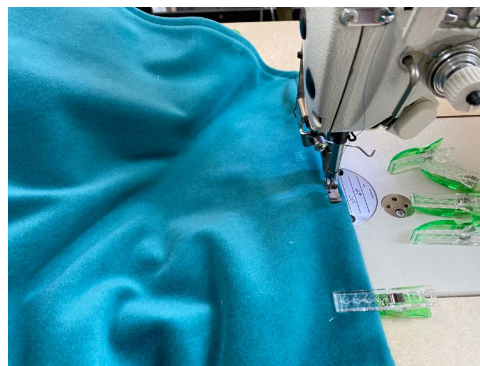
2 Press the edges of the skirt.



3 Use Jumbo Wonder Clips around the skirt and to secure the hole used for turning.



4 Top stitch all edges of the tree skirt.





# Make the Buttons & Ribbon Loops to Close the Tree Skirt

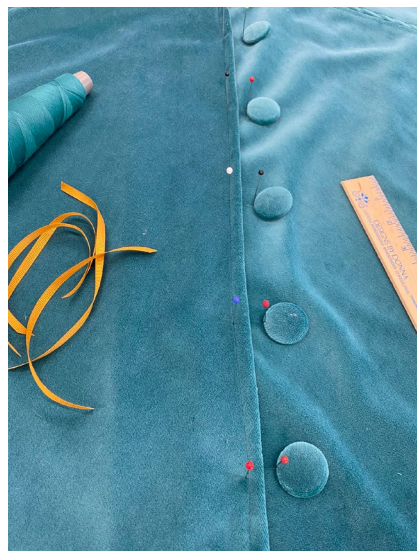
- 1 Cut the fabric for the buttons.
- 2 Use the Grommet / Button Press GL to make the buttons.



View the Video for Creating Buttons »

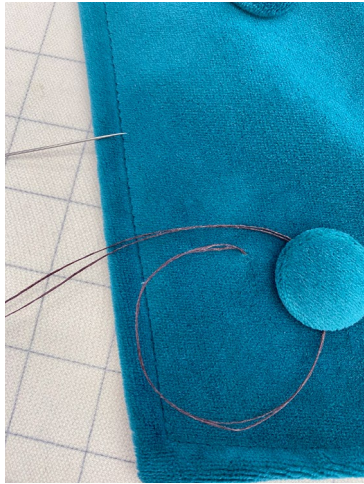


- 3 Place the buttons evenly spaced along the opening edge of the skirt.
- 4 Cut contrasting lengths of ribbon and mark for the placement of these.

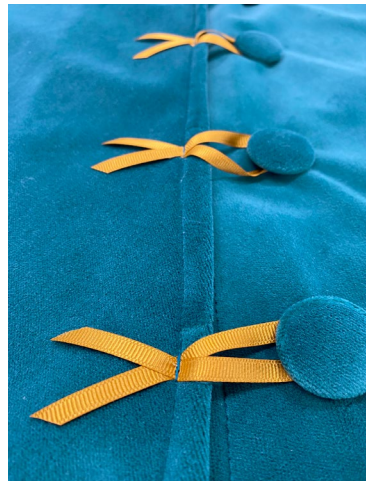




- 5 Sew the buttons to the skirt. Notice they are inset a few inches from the edge to create an overlap once the loops are attached.



- 6 Sew the ribbon loops to the other side of the skirt opening edge.





## Fabrics Used in our Holiday Greetings Roomscape



RMCOCO  
Tiepo/Goldleaf



Clark & Clark  
Sontouso/Teal



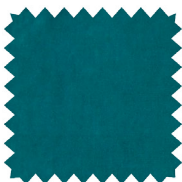
Greenhouse  
S3112/Moonglow



Fabricut  
Opulent Chevron/03



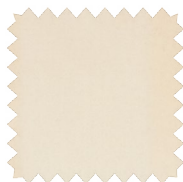
Greenhouse  
F2709-Aegean



Greenhouse  
A7941/Peacock



Stroheim  
Vinout Metallic/ Gold



Greenhouse  
S3310/Cloud



Greenhouse  
F2745/Moonglow