

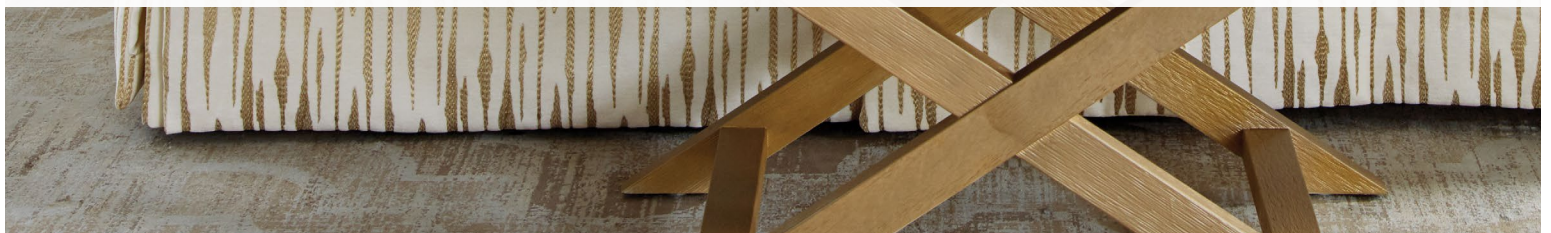
 ROOMSCAPES

How-To Guide



FABRICATE A

REVERSIBLE THROW



Use warm and snuggly fabrics to give your guests something luxurious to cover up with in your welcoming guest room this holiday season.

ROWLEY PRODUCTS

ITEM

John James Hand Sewing Needles, Long Darners

TP110

Gütermann Polyester Thread

TG1M/

Jumbo Wonder Clips

QC42

Bed Throw

This warm and cuddly bed throw is made with two difficult-to-work-with fabrics.

- Faux fur & velvet are soft & warm, providing extra warmth for guests to cover up on cooler nights.
- Finished Size = 56 ½" x 75"
- The faux fur selvage was beautiful, creating a scallop design to become a feature on the two long sides of the throw.
- The two layers of fabric are joined on the inside with an interlocking stitch.
- All the outer edges of the throw are stitched by hand for best outcome of this project.



Cut the Fabric

- Always inspect the fabric prior to cutting.

1 For this project, the top fabric is cut 6" smaller than the bottom fabric in both width and length.

2 Layer the fabrics on the table, wrong sides together.



3 Remove the selvage from the top fabric.

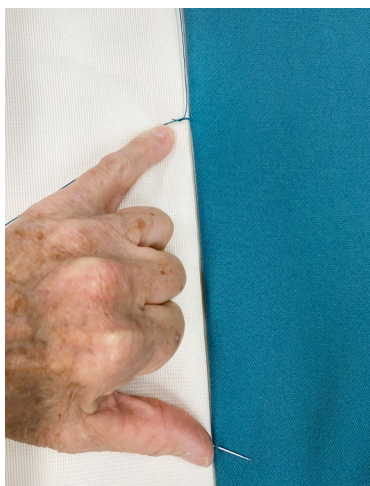
4 Square up the two fabrics so that there is a 3" border of the bottom layer all the way around.



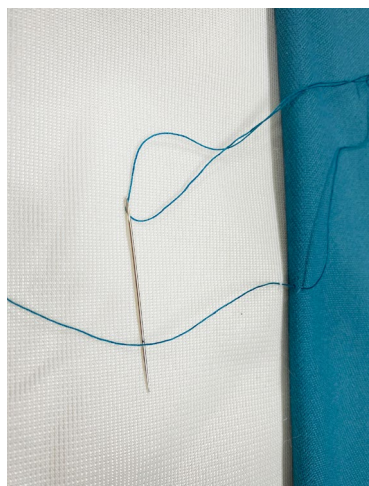
Create the Interlock Stitch

- An interlock stitch is used to secure the layers of fabric together from the inside.
- For this size project, there were two vertical lines of interlock stitches spaced equally across the throw horizontally.

1 Begin by folding the top fabric back over itself, exposing the bottom layer.



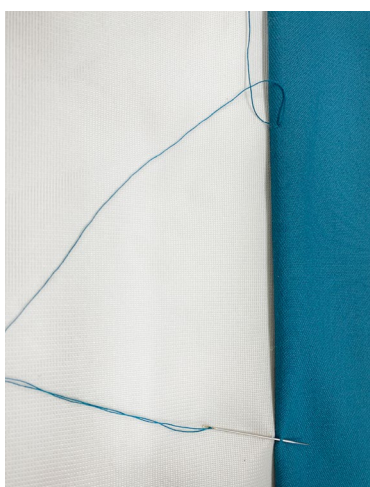
2 The stitches should be approximately 6" apart, or a thumb to pinky distance.



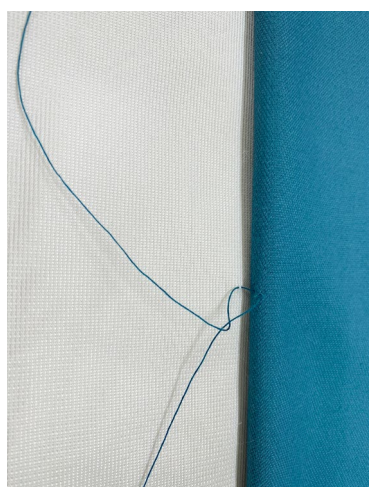
note

Do not pull the stitches too tight.

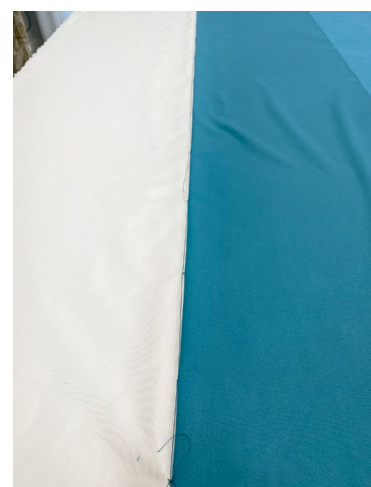
3 Begin by inserting a needle through a few threads of the bottom fabric, coming up through the top fabric.



4 Create a loop and take the needle under the loop, then insert the needle approximately 6" from the first.



5 Repeat this for the second vertical row of interlock stitches.



View the Video for Interlock Stitch »



- This short YouTube video demonstrates how an interlock stitch is sewn in drapery panels.
- Once you learn this method, you will find using this in bedding is also very helpful.

Fold & Stitch the Side Hems

- 1 Fold the raw edges inside along the two short edges.



- 2 Use the scalloped selvage along the two long edges as a design element. Use Jumbo Wonder Clips to hold in place.



- 3 Use a color matched thread to hand stitch the faux fur to the velvet.



- 4 At the corners, remove any bulk and then create a mitered corner.



Introducing the Completed Bed Throw

- From the reverse side, the stitches do not show.
- Fold the throw carefully before packaging and delivering to your customer.





Fabrics Used in our Holiday Greetings Roomscape



RMCOCO
Tiepo/Goldleaf



Clark & Clark
Sontouso/Teal



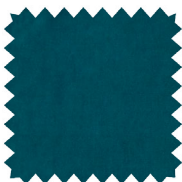
Greenhouse
S3112/Moonglow



Fabricut
Opulent Chevron/03



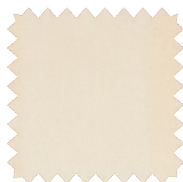
Greenhouse
F2709-Aegean



Greenhouse
A7941/Peacock



Stroheim
Vinout Metallic/ Gold



Greenhouse
S3310/Cloud



Greenhouse
F2745/Moonglow