

 ROOMSCAPES

# How-To Guide



— FABRICATE A —

## ROMAN SHADE WITH FLOATING RIBS



Our Roman shade is created using R-TEC Automation® Shade Wirefree Tubular Motor System. Li-ion powered motors require no electrical wiring, no external battery pack and no complicated installation.

## PRODUCTS USED

### ROWLEY PRODUCTS

R-TEC Automation® Shade Wirefree Tubular Motor Starter Kit  
 Soft Shade Roller Clips  
 Plastic Roman Shade Ribs, 5' Long, ¼" Diameter, Off-White  
 Whyte & Ivory, Manchester Sateen Wide Lining, Pale Ivory  
 Jumbo Wonder Clips  
 Perfect Pleating Tape, 1" - 2" Pleat Width  
 Crimp Button Forms, #45  
 Grommet / Button Press  
 John James Hand Sewing Needles, Long Darners  
 Gütermann Polyester Thread  
 Skirtex Stiffener  
 Fringe Adhesive

### ITEM #

RSRTM5VL25  
RWRC112  
RSR4/5  
LNW101/  
QC42  
DYC86  
FCA45  
GL  
TP110  
TG1M/  
SKX55/20  
FA10

### ROLLER / ROMAN SHADE WIREFREE TUBULAR MOTOR KIT



- 25 mm Wirefree Tubular Motor
- Battery Charger
- 1-1/2" Aluminum Roller, 4'
- Pair of Brackets RSB10 & Bracket Covers RSBC10/W - White
- Drive Set Kit
- 1 Channel Remote
- Wood Shade Slat
- Shrouded Lift Cord

Max. Load

13 lbs.

Our Roman shade has floating ribs inserted above the tack points and fall to the front of the folds as the shade raises. There is no glue or tape necessary to hold the ribs in place.

View the Video »



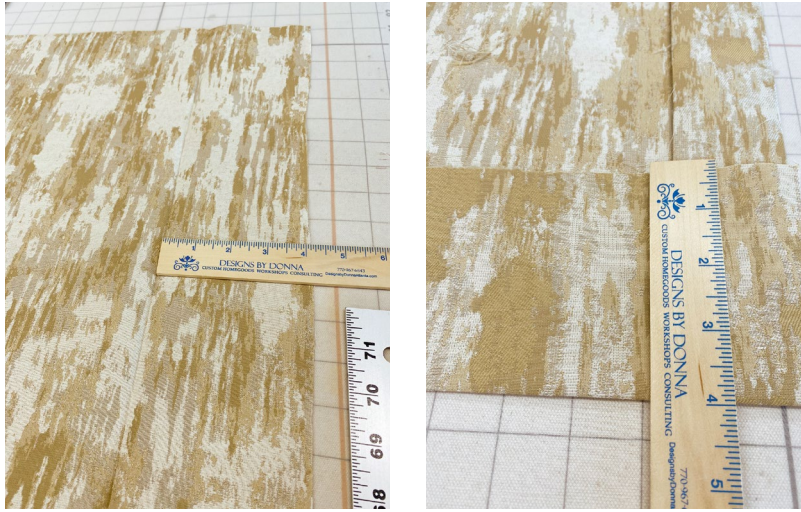
## Make the Roman Shade

- Determine cut size for fabric.
  - For this shade, the fabric width is cut the finished shade width plus 8". This allows for two double 2" side hems.
  - The cut length is the finished shade length plus 20". This allows for a permanent fold at the bottom of the shade and a pocket for the weight bar behind the permanent fold.

- Cut the fabric.



3 Press side and bottom hems.



4 Cut the Lining.

- A. The Lining width is cut the width of the finished shade minus 1/4".
- B. The Lining length is cut the shade Finished Length (FL) plus 16".



# Prepare the Bottom Skirt of the Roman Shade

- Use Skirtex Stiffener SKX55/20 for the Roman shade skirt.

1 Cut Skirtex 10" x shade width - 1/2".



2 Fold & crease the Skirtex Stiffener, matching long edges.

3 Place the Skirtex Stiffener inside the bottom hem between the Face Fabric (FF) and Lining.



# Prepare the Back of the Shade

- Close the bottom and one side hem using your method of choice.

1 Mark the shade for horizontal and vertical tack points.



See page 6  
for placement  
of the first 3  
tack points!

2 Cut the Shrouded Lift Cord for the vertical rows of cord.



3 Tack the Shrouded Lift Cord in place.



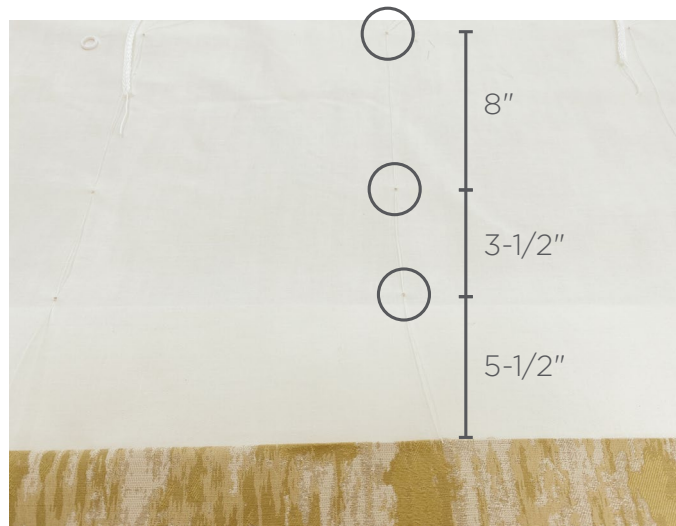
# Placement of First Tack Points

- These details show the placement of the first tack points to allow for the shade skirt, the pocket for the weight bar, and the permanent fold at the bottom of the shade.

The first three tack points are stitched together.

A Roman shade ring is stitched at the top of these tack points.

- 5-1/2" from bottom hem
- 3-1/2"
- 8"



# Bottom of the Shade Back Details

1 Pull the Cord out of the Shroud Tube above the bottom Ring.

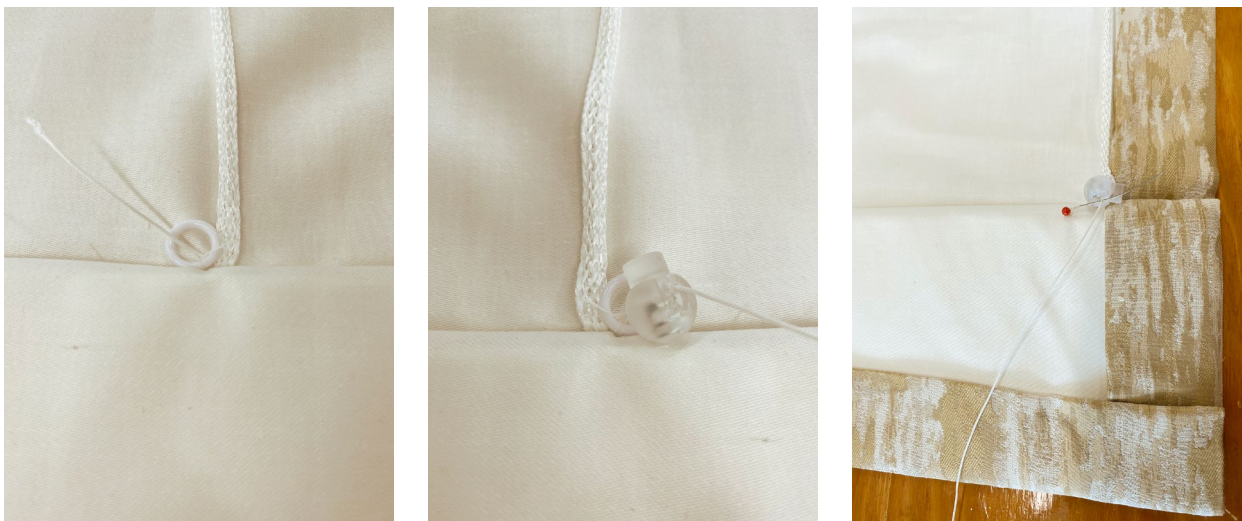
2 Insert the Shroud Tube inside the permanent fold and add a dot of Fringe Adhesive FA10.



3 Pull the Cord through the Ring.

4 Put the Cord through an Orb.

5 Place a pin through the Cord until final dressing of the shade.

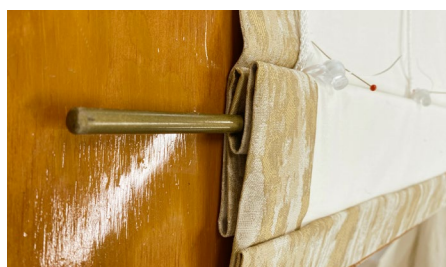


# Add the Floating Ribs & Weight Bar

- 1 Cut the Roman Shade Ribs 1/2" narrower than the shade width.
- 2 Slide the Ribs between the Lining and FF, above the tack points.
- 3 Close the remaining side hem.



- 4 Slide the Weight Bar in the pocket. Hand tack the pocket closed on each side.

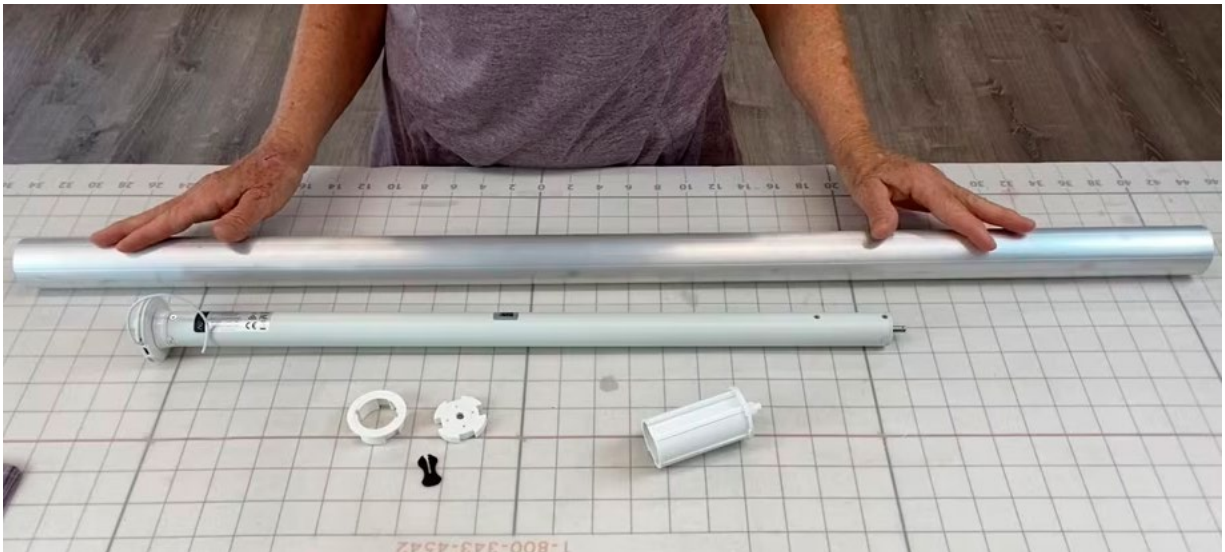


- The Ribs sit on top of the tack points.
- As the shade raises, the Ribs fall to the front folds.
- As the shade lowers, the Ribs drop to the top of the tack points again.

View the Video »



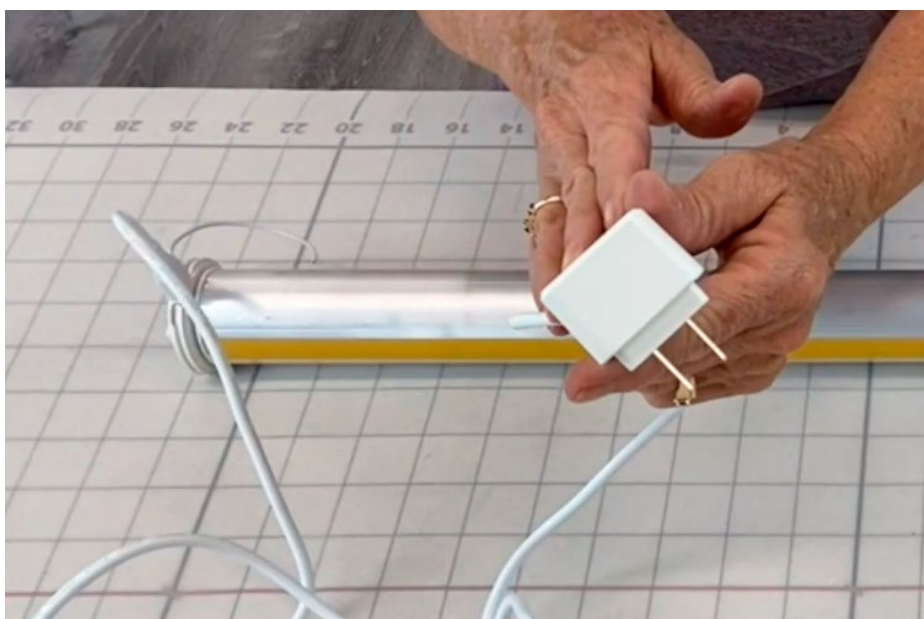
# Assemble the Motorized Shade Tube



View the Video for Motorized Roman Shade Assembly »



- Always fully charge the battery prior to assembling and installing the shade.



# Attach Shade to the Dustboard & Add the Tube

- 1 Mark the FL of the shade and staple to the Dustboard.



- 2 Attach the Motorized Shade Tube to the Dustboard.



- 3 Add the Bracket Covers to the Shade Brackets.



# Complete the Back of the Roman Shade

1 Determine the placement for the Soft Shade Roller Clips.

2 Knot the cord to the Soft Shade Roller Clips and place Clips on the Shade Tube.



3 Hang the shade. Test for length.

4 Remove pins below Orbs. Knot Cords and run over and back through the Orb.



# Make the Button(s)

1 Cut the fabric for the buttons.

2 Use the Grommet / Button Press GL to make the buttons.



View the Video for Creating Buttons »



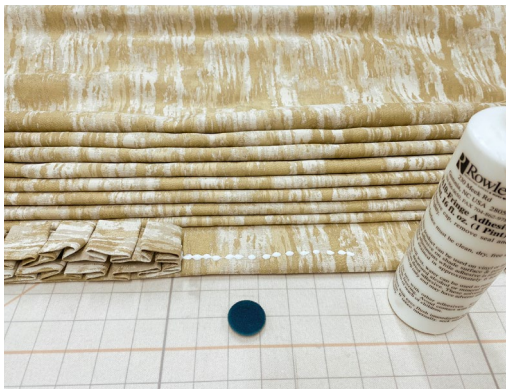
# Add the Pleated Embellishment to the Shade

1 Use Fringe Adhesive FA10 to apply the pleated embellishment to the shade.

2 Tuck the ends to the back of the shade inside the bottom hem.

3 Hand tack the sides of the hem to secure.

4 Add the button detail and secure with a square knot.



# Program the Shade

1 Pair the Shade Motor to a Remote Control. See our selection of [R-TEC Smart Controls](#) »

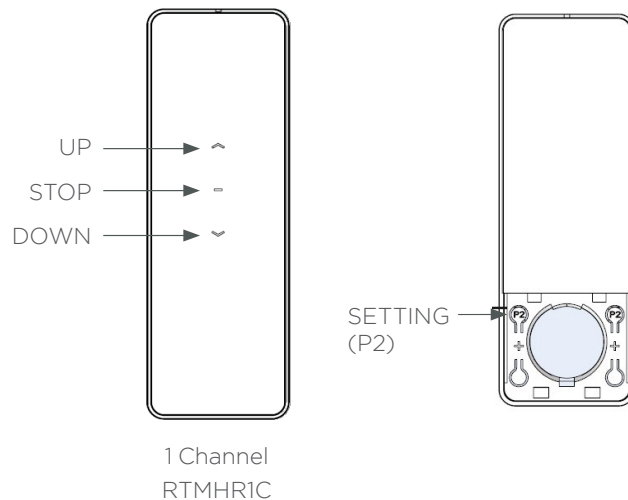


2 Check the travel direction of the motor. 

3 Set Upper & Lower Limits. 

4 Set a Favorite Position. 

5 Lock the Remote (disable the limit setting function). 



View the Video for Programming the Shade »





## Fabrics Used in our Holiday Greetings Roomscape



RMCOCO  
Tiepo/Goldleaf



Clark & Clark  
Sontouso/Teal



Greenhouse  
S3112/Moonglow



Fabricut  
Opulent Chevron/03



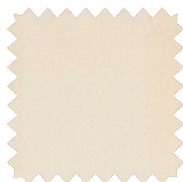
Greenhouse  
F2709-Aegean



Greenhouse  
A7941/Peacock



Stroheim  
Vinout Metallic/ Gold



Greenhouse  
S3310/Cloud



Greenhouse  
F2745/Moonglow