

 ROOMSCAPES

How-To Guide

— FABRICATE —

A BOLSTER PILLOW & PILLOW SHAMS



Learn to create a bolster with contrast welt and fun flower embellishment,
and add the perfect finishing touch with pillow shams.

PRODUCTS USED

BOLSTER PILLOW

	ITEM #
Professional Shears	<u>CU22</u>
Sealah No-Sew Adhesive Tape	<u>SLT38/30</u>
R-TEX Polyfoam Welt Cord, 5/32"	<u>WC40/S</u>
R-TEX Polyester Cluster Pillow Insert, Neckroll, 9" x 36"	<u>PJPC56</u>
Bolster Needle, 24"	<u>TP89</u>

PILLOW SHAMS

	ITEM #
Jumbo Wonder Clips	<u>QC42</u>
Zippers by the Roll, Nylon, Size #4.5	<u>ENR25/</u>
Zipper Slides, Non-Locking, Size #4.5	<u>ENP2/</u>
Gütermann Polyester Thread	<u>TG1M/</u>
R-TEX Polyester Cluster Pillow Insert, Queen, 20" x 30"	<u>PJPC272</u>



BOLSTER PILLOW

- For this Bolster to fit the entire width of the Queen size bed, two neckroll inserts were sewn together, end to end.
- The fabric was railroaded to eliminate seams.
- For visual interest, contrast Welt Cord was sewn around the Bolster in a method that eliminated cutting the fabric to sew the Welt Cord.
- The Bolster Cover has gathered ends and is finished off with a flower embellishment made from left over remnants from the headboard.



PILLOW SHAMS

- These holiday themed Pillow Shams were made with fabric remnants left over from the draperies & duvet cover.
- When designing a pillow using leftovers, look at the sizes and shapes of the remnants for inspiration.
- Then let your creative spirit take over.

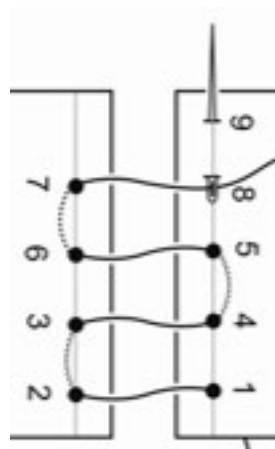
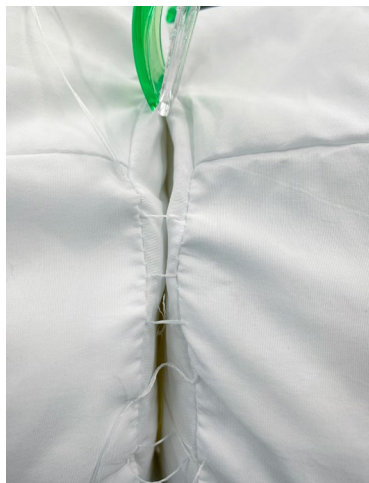
BOLSTER PILLOW

- For this Bolster to fit the entire width of the Queen size bed, two neckroll inserts were sewn together, end to end. The fabric was railroaded to eliminate seams. That's where we will start!



Prepare the Bolster Inserts & Cut the Fabric

- Sew a ladder stitch to join two Bolster (Neckroll) Inserts together.



- Measure the circumference of the Bolster Insert to determine cut length of the fabric.

- Circumference = 32" + 1"
[for SA = 33"]



- Measure from the center of the bolster end, across the joined bolster insert, and to the bolster end on the other side.

- Finished width = 60" + 4" on each end of Bolster + 4" for the Welt SAs + 1" for a pocket on each end of the Bolster - 69".
- Fabric for this project = 69" x 33"

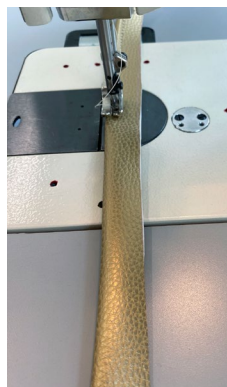
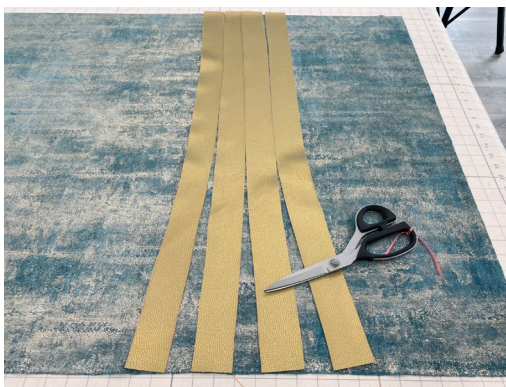


Make the Welt Cord & Mark the Fabric for Welt Placement

- Two rows of Welt Cord will be placed along each outer edge of the Bolster, and the remaining two equally spaced across the Bolster.

1 Cut and make 4 pieces of Welt Cord long enough to go around the Bolster Pillow.

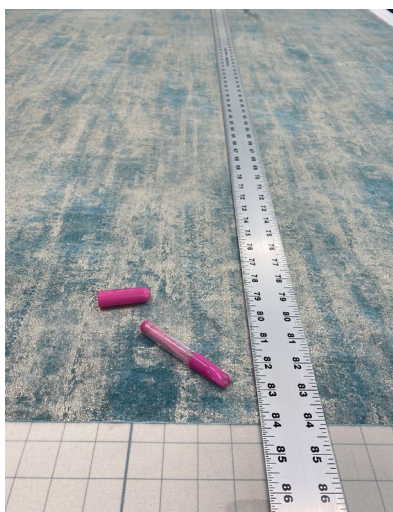
- We used foam welt because it will hold the round shape of the Bolster.
- The seam allowances of the Welt must be 1/2".



2 Mark the fabric for the placement of the Welt Cord.

3 Place the prepared Welt Cord on the fabric, matching the edge of the Welt SA on the mark on the fabric.

- Use a piece of Sealoh No-Sew Adhesive Tape on the Welt SA to help hold this in place as you sew.



Stitch the Welt Cord to the Bolster Fabric

- Stitch one row of Welt Cord to the fabric prior to completing each additional row of Welt Cord.

- 1 Stitch the first row of Welt Cord to the Bolster.
 - At each end of the Welt, remove about 1" of the foam welt cord.
 - The seam allowances of the welt must be 1/2".



- 2 Fold the fabric right sides together, snugging the fabric to the edge of the welt SA.
 - Stitch close to the Welt Cord, enclosing the SA.



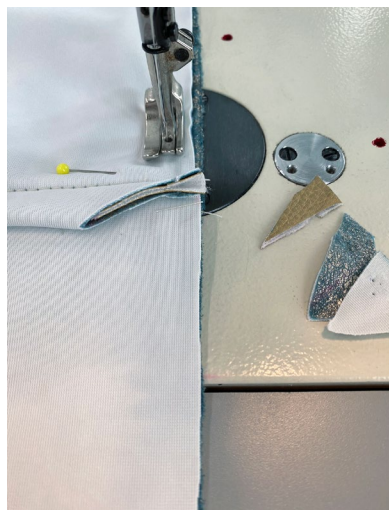
Welt Cord Details

- This method keeps the fabric from slipping as you are stitching difficult to work with fabrics, and ensures the ends of the seams line up.
- Once you have completed these steps for each row of Welt Cord, your Bolster Cover will look like this:



Stitch the Bottom Seam of the Bolster & Sew the Casing for the Gathered Ends

- 1 Fold the Bolster Cover right sides together, matching long ends.
 - Make sure that the rows of Welt match up. Pin if necessary.
- 2 Stitch from one end to the other, clipping the SA of the Welt seams to eliminate bulk at the bottom seam.



- 3 Fold up and sew a 1/2" casing along both ends of the Bolster, leaving a hole to insert the cord.
- 4 Turn the Bolster right sides out.



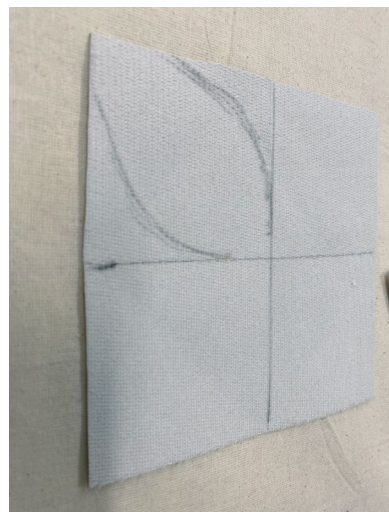
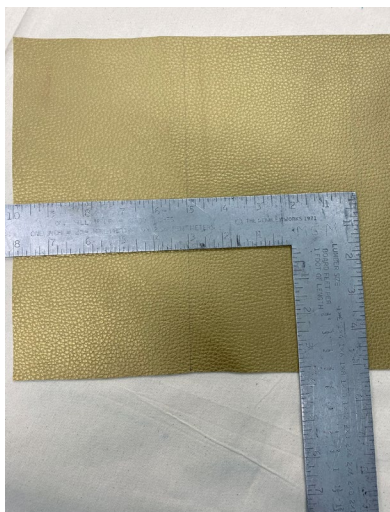
Make the Flower Embellishment

- The flower embellishments were made with a 10" x 10" remnant from the headboard vinyl fabric.

1 Mark four squares 5" x 5".

2 On the back side mark four 2-1/2" x 2-1/2" squares.

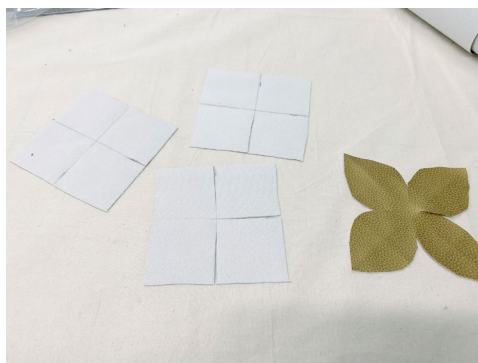
- Hand draw a petal shape.
- This does not have to be perfect!



3 Cut petal shapes on each of the squares.

4 Using a contrasting color thread, sew a design of your choice on each of the petals.

- Have fun sewing and don't worry about making each look the same.
- That is the beauty of this floral embellishment!

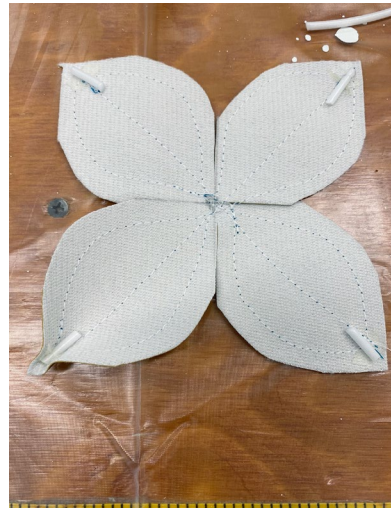


Complete the Flower Embellishment

- The flower embellishment needs some shape.

1 Add a small piece of Sealah No-Sew Adhesive Tape to the back of the petal tips.

2 Cut a small piece of foam Welt Cord and stick on the Tape.



3 Use Jumbo Wonder Clips to shape the petal tips.

4 Layer two flowers over each other, rotating the petals.

5 Make a fabric covered button for the centers of both floral embellishments.

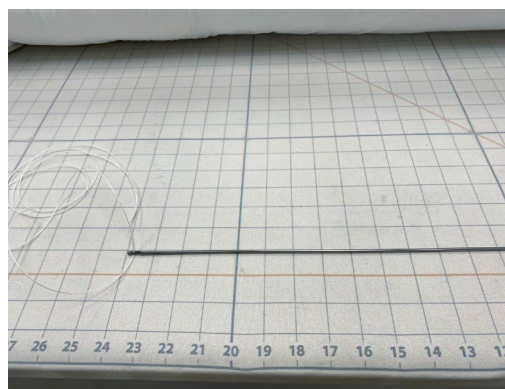


Prepare the Bolster Insert to Attach the Flower Embellishment

- The flower embellishment sits snugly against the Bolster ends by inserting a length of shade cord or button twine from inside the Bolster.

1 Mark the centers of both ends of the Bolster Insert.

2 Use a 24" Bolster Needle TP89 with a doubled length of cord long enough to reach about 30".



3 Insert the Bolster Needle into the insert about 24" from one end and have it exit the insert in the center of one end.

- Do not remove the needle at this point.



4 Add a wad of batting at the end of the cord where the needle entered the bolster. This will keep from pulling the cord through the Bolster.



Insert the Bolster Insert into the Bolster Cover

- Keep the seam of the insert and the cover lined up.

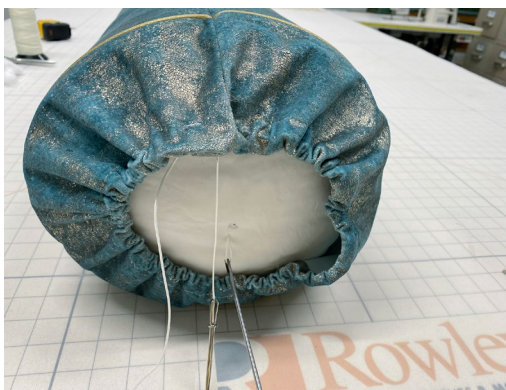
1 Carefully put the insert into the cover.



2 Use a bodkin to add a pull cord into the casing at the end of the Bolster Cover.

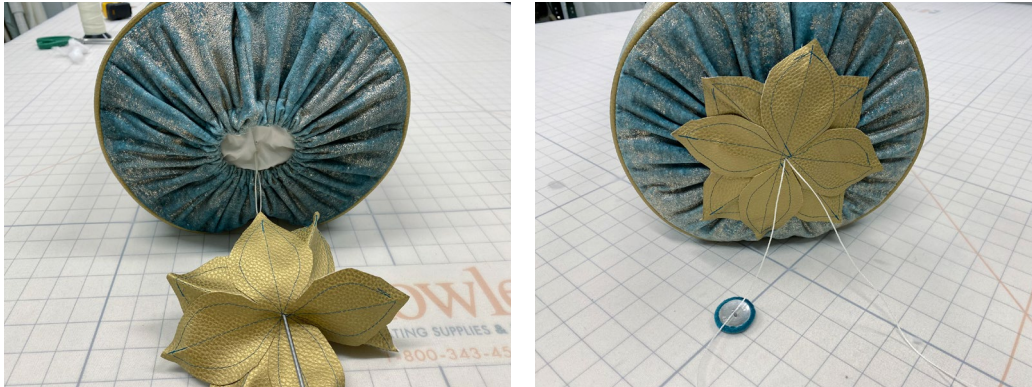
3 Tighten and tie off the cords to close the end of the Bolster.

- Notice the Bolster Needle is still coming out of this end of the Bolster.



Add the Flower Embellishment to One End

- 1 Push the Bolster Needle through the center of one flower.
- 2 Pull the cord through, clip the cords bring one end through the button shank.

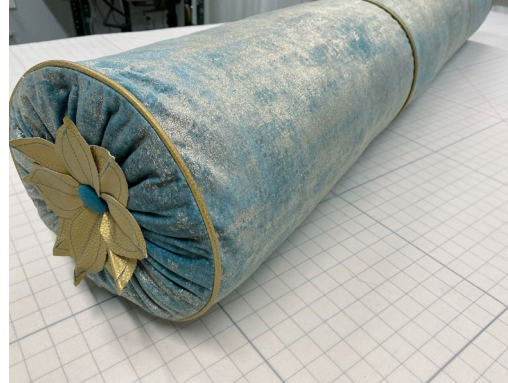


- 3 Tie a secure knot as you tighten the flower to the bolster end.
- 4 Clip the cords removing the excess.



Add the Flower Embellishment to the Second End

- 1 Pull the bolster cover away from the other end of the insert.
- 2 Repeat the previous steps to add the flower embellishment to the second end of the bolster.



PILLOW SHAMS

- These holiday themed Pillow Shams were made with fabric remnants left over from the draperies & duvet cover.
- Measure the Pillow Inserts before cutting the fabric.

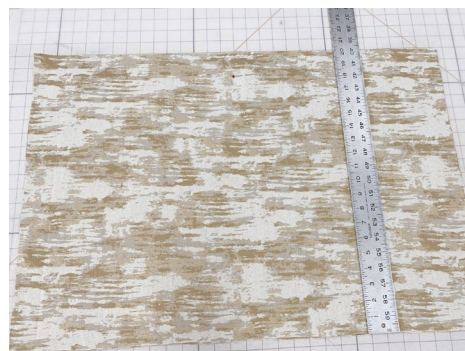
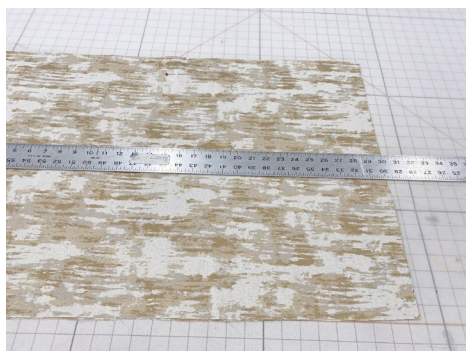


Measure Inserts & Cut Fabric

- 1 Measure the Pillow Insert from seam to seam across the width and from top to bottom.



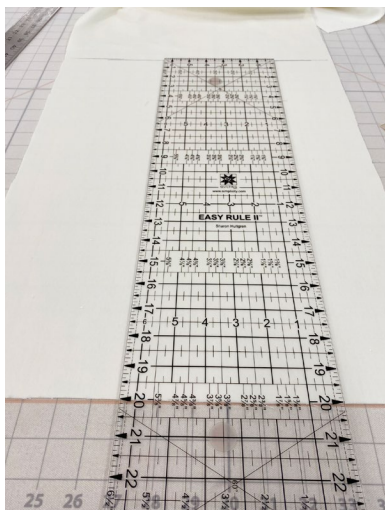
- 2 Cut the fabric for the pillow back based on the insert measurements.
 - For a well filled out pillow cover, the pillow back fabric was cut the same size as the Pillow Insert.
 - When stitching, a 1/2" Seam Allowance (SA) will be used to create a cover 1" smaller than the insert.



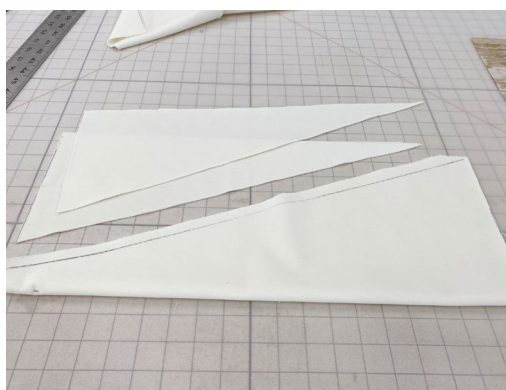
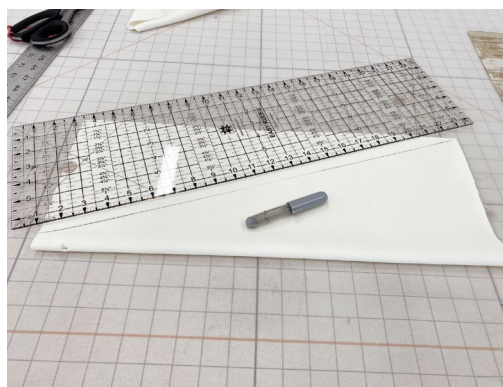
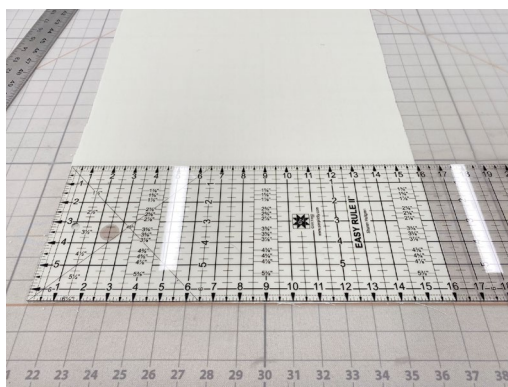
- 3 Serge around all four sides of the pillow back fabric.

Cut the Pillow Front Fabrics

- 1 Measure the remnant for the center of the pillow. The cut length should be the same as the cut length for the pillow back, or 20".
- 2 This remnant is already cut at the width wanted at the bottom of the triangle (tree shape) to measure, 16".



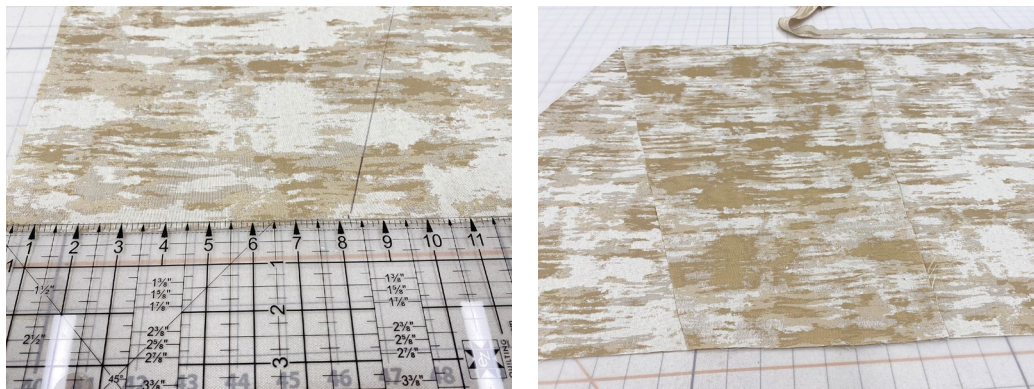
- 3 Fold the fabric in half. Draw a line to indicate the shape of the tree.
- 4 Cut the shape, leaving a 1/2" SA.



Cut the Pillow Contrasting Fabric

- The Pillow Sham front will measure 30" x 20" once the sections are stitched together.

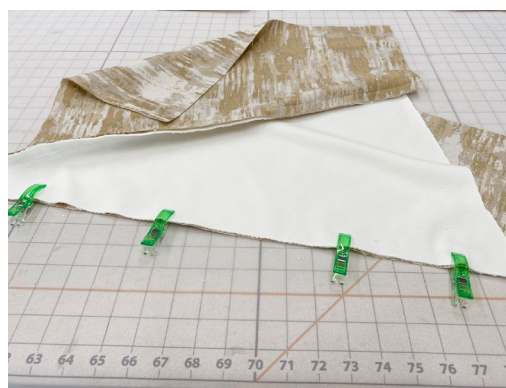
- 1 Calculate the cut sizes for the contrasting fabric including seam allowances. Draw a line to indicate the cut line.
- 2 Place the first piece right side down and cut the second contrast piece for the pillow front.



- 3 Use Jumbo Wonder Clips to join one side section to the center section. Stitch together.



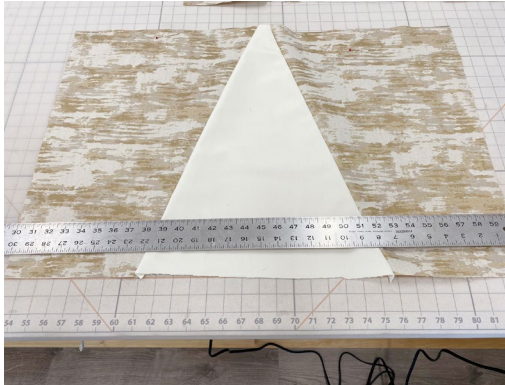
- 4 Repeat this step for the second side section.



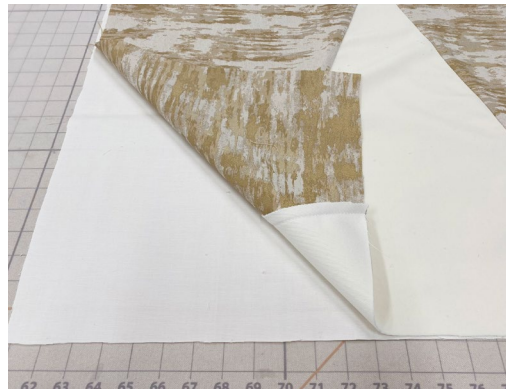
Complete the Pillow Front

1 Measure the width and length of the completed pillow front.

2 Carefully press the seams toward the outside.



3 Cut a piece of Lining for the pillow front and place wrong sides together.



4 Serge around the outer edges of the pillow front.



Insert the Zipper

- 1 Prepare a regular Zipper the same size as the pillow bottom.
- 2 Place pillow front and back right sides together. Baste a 1/2" SA.



- 3 Press the seam open.
- 4 Center the Zipper over the seam and pin.



View the Video for Inserting a Zipper Slide onto Regular Chain »



Finish the Pillow Sham

- 1 Stitch to either side of the zipper teeth.
- 2 Use a seam ripper to open the seam and expose the zipper. Open the zipper a few inches.



- 3 With right sides together, pin and stitch the remaining three sides of the pillow.



- 4 Turn the pillow cover right sides out and fill with a pillow insert.





Fabrics Used in our Holiday Greetings Roomscape



RMCOCO
Tiepo/Goldleaf



Clark & Clark
Sontouso/Teal



Greenhouse
S3112/Moonglow



Fabricut
Opulent Chevron/03



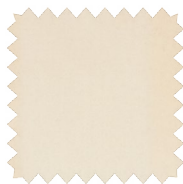
Greenhouse
F2709-Aegean



Greenhouse
A7941/Peacock



Stroheim
Vinout Metallic/ Gold



Greenhouse
S3310/Cloud



Greenhouse
F2745/Moonglow