

How-To Guide



FABRICATE

EMBELLISHED DRAPERY PANELS



Our Drapery Panels are embellished with box pleats on the leading edge and contrasting buttons at the pleated header. Finish up the festive look with our R-TEC Automation® Finestra® Wood Hardware Automated Traverse System with Knox End Caps in Antique White Finish with Gold Shimmer.

ROWLEY PRODUCTS

ITEM

Whyte & Ivory, Manchester Sateen Wide Lining, Pale Ivory
 R-TEX Non-Woven Permanent Buckram
 Jumbo Wonder Clips
 Perfect Pleating Tape, 1" - 2" Pleat Width
 Crimp Button Forms, #45
 Grommet / Button Press
 John James Hand Sewing Needles, Long Darners
 Gütermann Polyester Thread
 Lead-Free Weights, Sausage Bead, Fabric Covered

LNW101/
BN38
QC42
DYC86
FCA45
GL
TP110
TG1M/
SW79

Make Box Pleats for the Leading Edge

- Box Pleats for this project are made using Perfect Pleating Tape DYC86, 2" pleat width

- 1 Cut enough fabric strips for the length of the panel lead edges.
 - A. Cut the strips 3 x the finished length of the drapery lead edge.
 - B. Cut the strips 2 x the finished width + 1".

- 2 Seam the strips together. Press the seams open.



- 3 Match the long edges of the strips and press.

- 4 Serge the long edge of the fabric strips.



Sew the Box Pleats

- For 2" pleat width, use the green numbers on our Perfect Pleating Tape DYC86.
- Stick the Tape along the fabric strip, 1/2" - 3/4" away from the serged edge.

1 Pinch up and crease at the first line, fold to meet line two, stitch.

2 Pinch up and crease at line 3, fold back to meet the same line 2, stitch.



3 Continue pinching and stitching until you have completed the box pleating.

4 Press the pleats.



View the Tutorial for Creating Box Pleats »



Begin the Panel Fabrication

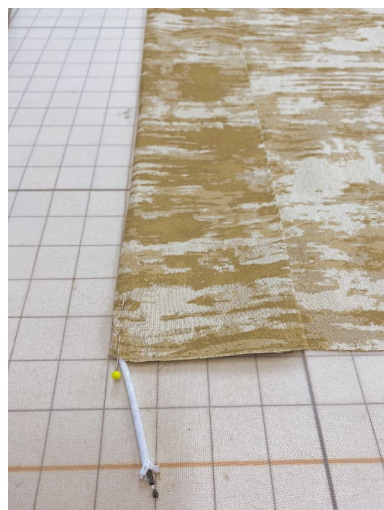
- Cut the Face Fabric (FF) and mark the bottom hem.

1 Roll out the fabric and inspect prior to cutting.



2 Add Lead-Free Weights, Sausage Bead, Fabric Covered SW79 for a beautiful rounded hem.

3 Close the hem using your method of choice.



View the Video for Drapery Hems with Weights »



Table the Drapery to the Finished Length (FL)

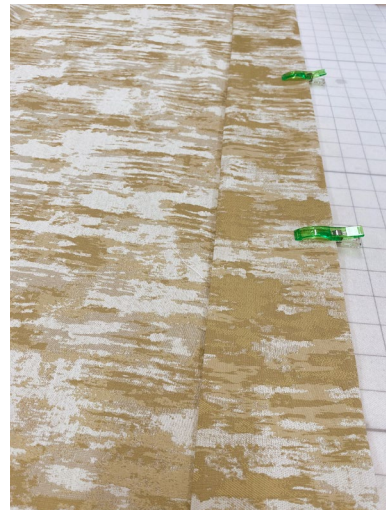
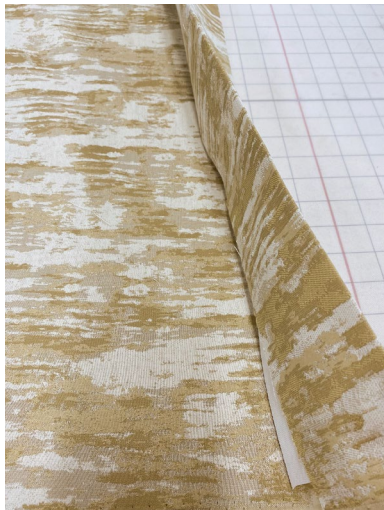
- This panel header has the fabric folded around the R-TEX Non-Woven Permanent Buckram BN38.
- The header allowance is 2 x the Buckram size.

1 Press the top of the panel to the finished length.



2 Unfold the header and add the Buckram.

3 Hold the header in place with Jumbo Wonder Clips QC42

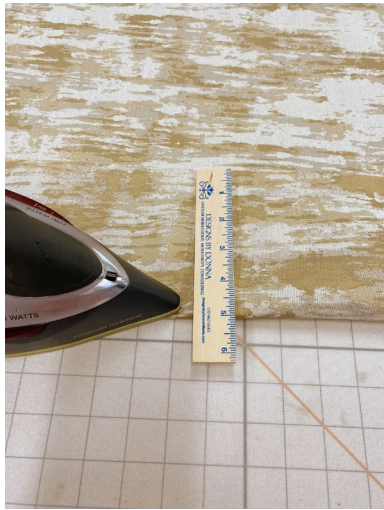


Prepare the Lead Edge Side Hem

- The lead edge side hem encloses the Seam Allowance (SA) of the box pleated embellishment.

1 Fold and press a 5" side hem allowance.

2 Remove any excess fabric above the box pleats to start the pleating at the top of the drapery panel.



3 Unfold the hem allowance and place the box pleats seam allowance along the crease.

4 Stitch the box pleats to the face of the drapery panel.



Complete the Lead Edge Side Hem by Enclosing the Pleated Hem Allowance

- Fold the drapery side hem allowance over the box pleats. Secure with Jumbo Wonder Clips QC42.

1 Stitch to enclose the pleated SA.

2 Press the hem allowance next to the box pleats.



3 Fold the side hem to the back side of the panel. Press.



Add the Lining & Close the Side Hems

- Place the panel on the table face down. Add the prepared lining.
- The 5" side hem allowance is now 4" for a double 2" side hem.

1 Press the lead edge side hem and the return side hem.

2 Remove excess lining along the top of the panel. Tuck under drapery header to enclose.

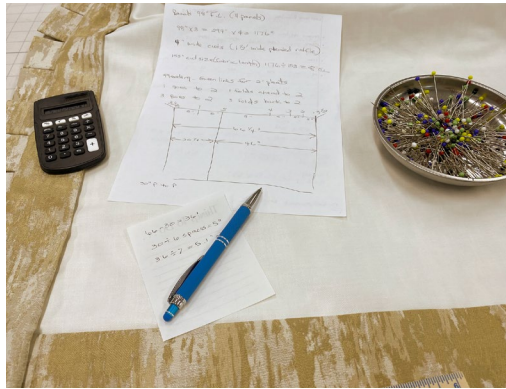


3 Close side hems in your method of choice.



Pleat the Panel

- 1 Figure pleats and spaces.
- 2 Mark panel for pleats and spaces on the back of the panel.



- 3 Fanfold the panel and pin pleats.

- 4 Stitch pleats.



Add the Button Embellishment

- 1 Cut the fabric for the buttons.
- 2 Use the Grommet / Button Press GL to make the buttons.



View the Video for Creating Buttons »



- 3 Sew the buttons to the front of the two finger pleats.



View the Video for Sewing Buttons »





Quick Tip

Opting for **Interlining** with your draperies can bolster insulation levels, which means reduced heating costs and a cozy interior atmosphere even on the coldest days.



Fabrics Used in our Holiday Greetings Roomscape



RMCOCO
Tiepo/Goldleaf



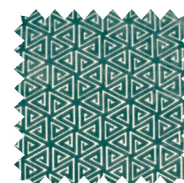
Clark & Clark
Sontouso/Teal



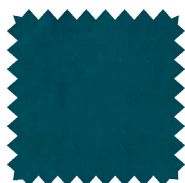
Greenhouse
S3112/Moonglow



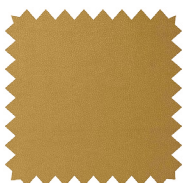
Fabricut
Opulent Chevron/03



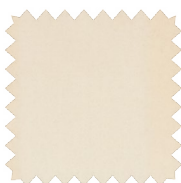
Greenhouse
F2709-Aegean



Greenhouse
A7941/Peacock



Stroheim
Vinout Metallic/ Gold



Greenhouse
S3310/Cloud



Greenhouse
F2745/Moonglow