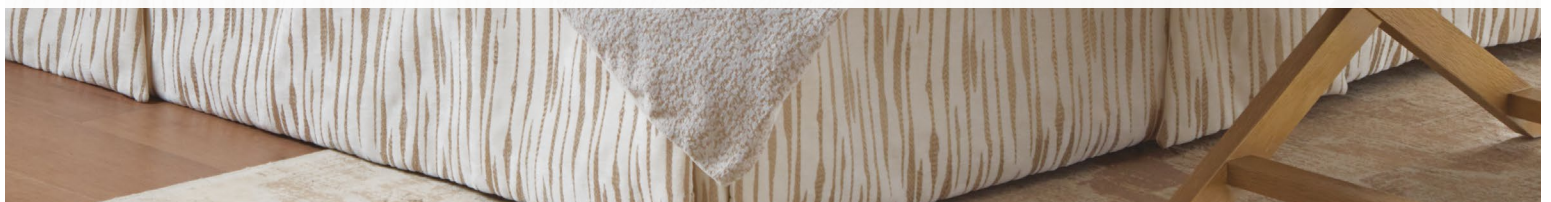


How-To Guide



— FABRICATE —

HOLIDAY GREETINGS GUEST ITEMS



We're showing you how to impress your guests with glam items! Have them relax with a sleep mask, and stuff toiletries into a zippered case. Check out our Tips for Hosting this Holiday Season on pages 2 - 3.

PRODUCTS USED

SLEEP MASK

Pattern Making Paper
Glass Head Straight Pins
Magnetic Wrist Pin Cushion
Ergonomic Shears
Gütermann Polyester Thread

ITEM

DYC18/
TP49
WW41
CU14
TG1M/

TOILETRIES CASE

Pattern Making Paper
Glass Head Straight Pins
Magnetic Wrist Pin Cushion
Ergonomic Shears
Gütermann Polyester Thread
Zippers by the Roll, Nylon, Size #4.5
Zipper Slides

ITEM

DYC18/20
TP49
WW41
CU14
TG1M/
ENR215/
ENP2/



Hosting just got easier with these tips!

Creating a warm and welcoming holiday themed guest room is a wonderful way to show guests how much you care about their comfort and happiness.

CONSIDER THE COLOR THEME

Choose warm, cozy colors like golds, creams, and teal to create a festive atmosphere. Carry these colors throughout the bedding, pillows, window treatments and accessories.



RMCOCO
Tiepo/Goldleaf



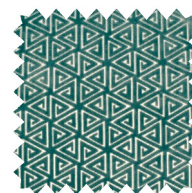
Clark & Clark
Sontouso/Teal



Greenhouse
S3112/Moonglow



Fabricut
Opulent Chevron/03



Greenhouse
F2709-Aegean



Greenhouse
A7941/Peacock



Stroheim
Vinout Metallic/ Gold



Greenhouse
S3310/Cloud



Greenhouse
F2745/Moonglow

GUEST-CONTROLLED COMFORT

Enhance guest comfort with the installation of an R-TEC Automation® Smart Control Remote or Hub, providing complete control over custom window coverings settings.

[Download our Drapery Panels & Shade How-To Guides »](#)



COZY BEDDING BLISS

Use soft, comfortable sheets and add a warm duvet cover. Provide luxurious throw blankets for extra warmth on chilly nights. Add holiday-themed pillows to complete the look.

[Download our Holiday Bedding How-To Guides »](#)



STYLE MEETS FUNCTION

Opt for an upholstered bench at the foot of the guest bed - it's stylish and doubles as a luggage rack. Also, our upholstered headboard pieces provide comfort after a long day of holiday celebrating.

[Download our Upholstered Headboard & Bench How-To Guides »](#)



PROVIDE EXTRA AMENITIES

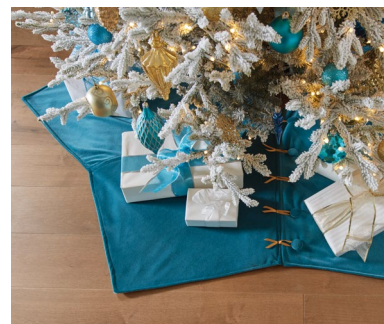
Simplify your guests stay with room essentials like toiletries & fresh towels, the Wi-Fi password, or a small welcome gift. Include a zippered case (fabrication details on pages 7-12) for toiletries, and an sleep mask (fabrication details on pages 4-6).



ADD HOLIDAY DÉCOR

Consider a tree adorned with a beautiful skirt, string lights, or candles to create a warm and inviting atmosphere.

[Download our Tree Skirt How-To Guide »](#)



[Click for more year-round guest bedroom hosting tips.](#)

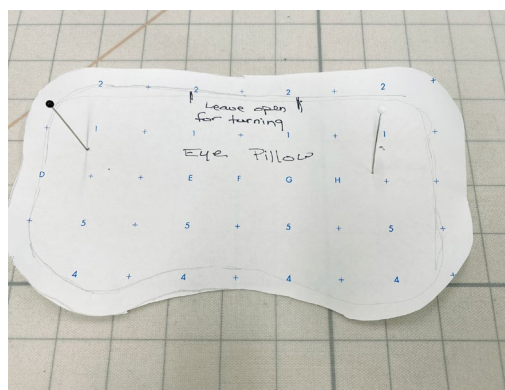
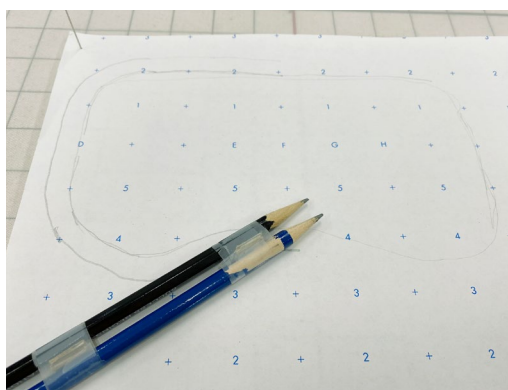
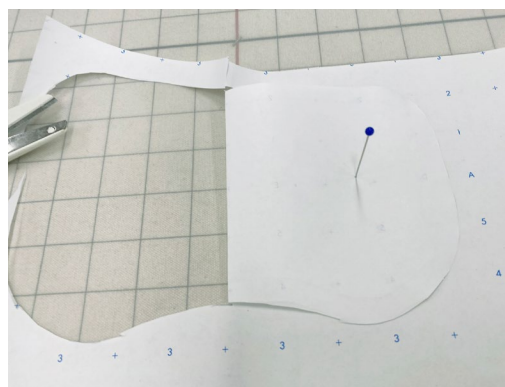
FABRICATE A SLEEP MASK

This sleep mask is quick to make, and it only takes a small amount of fabric.

For this project, the mask is filled with rice but may be filled with buckwheat hulls mixed with lavender for a lovely, relaxing scent.

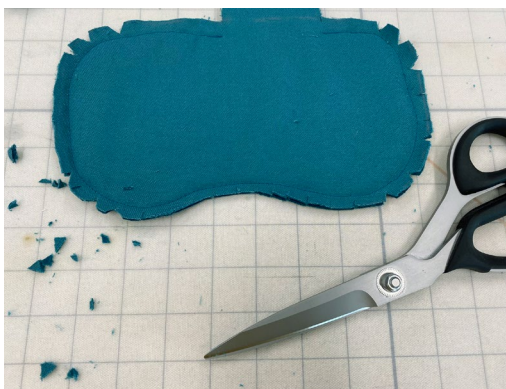
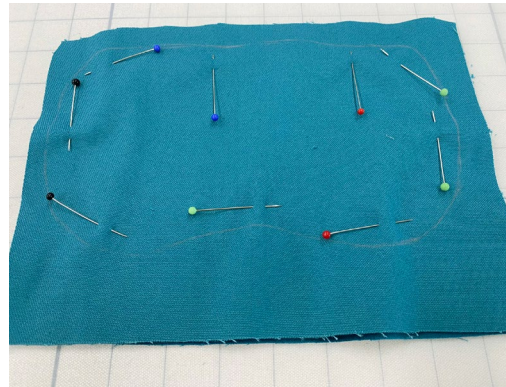
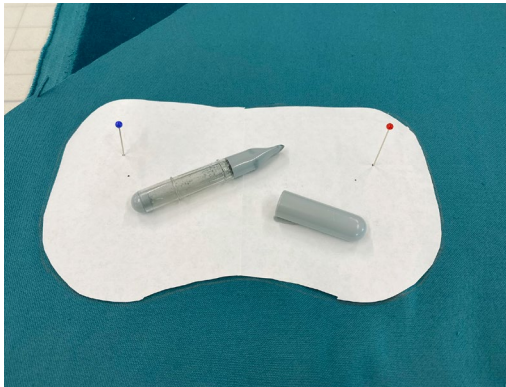
Make a Pattern for the Sleep Mask

- 1 Make a pattern for the sleep mask.
- 2 Cut it out.
- 3 Add a 1/2" Seam Allowance (SA) to the pattern.
- 4 Write any sewing instructions on the pattern.



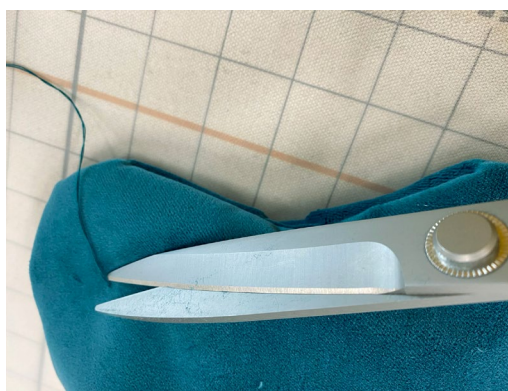
Cut the Fabric & Sew the Mask

- 1 Place two pieces of fabric, right sides together. Draw the pattern on the fabric.
- 2 This fabric has a nap, so it was held together with a lot of Glass Head Straight Pins.
- 3 Stitch the shape of the pattern and remove the pins as you stitch.
- 4 Leave a hole for turning.
- 5 Cut the mask shape out and clip and notch the curves.
- 6 Turn the mask right sides out.



Fill the Mask & Complete

- 1 Place a funnel inside the mask.
- 2 Carefully, pour rice or buckwheat hulls inside the mask.
- 3 Using color matched thread, close the hole.
- 4 Bury the tail of the thread by pushing the needle in the mask and out a few inches away.
- 5 Clip the thread.
- 6 Enjoy the mask!

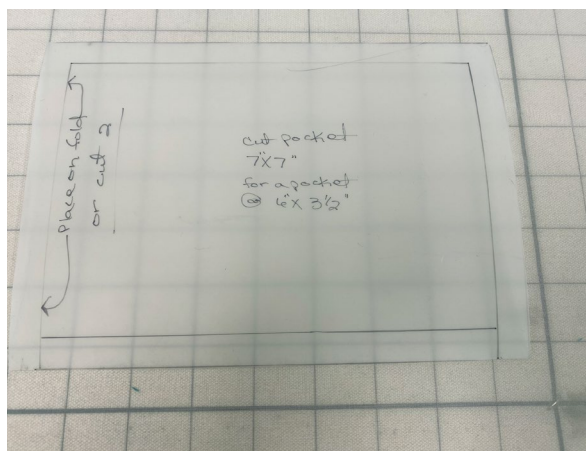


FABRICATE A TOILETRIES CASE

Providing a toiletries case in your guest room is a thoughtful gesture that your visitors will appreciate. It's important to include items that will make their stay more comfortable and convenient. Here are a few essential items you can add to your guest room toiletries case: toothbrush & toothpaste, small bottles of shower gel & shampoo, hand lotion, tissue pack, disposable razor.

Make a Pattern & Cut the Fabrics

- 1 For this case, the pattern is 8" x 6", and is placed on a fold of the fabric.
- 2 A contrast lining is used and is the same size as the main fabric.
- 3 If you want a pocket on the inside, this is cut at 7" x 7".
- 4 Using DYC18/20 or pattern making film, draw a 1/2" SA on the pattern, write any instructions on the pattern for making the case in the future.

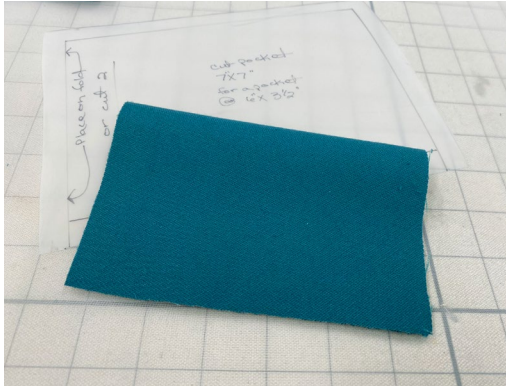


- 5 Cut out the pattern in your fabric of choice.



6 If making a pocket, cut this out.

7 Fold the pocket right sides together & stitch, leaving a hole for turning.



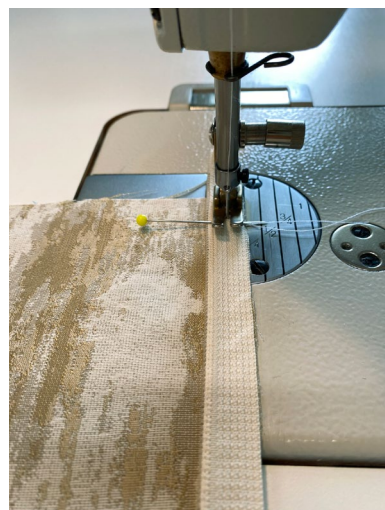
8 Topstitch the top fold of the pocket.

9 Pin the pocket to the case lining, centering it on one half. Stitch the three sides of the pocket.

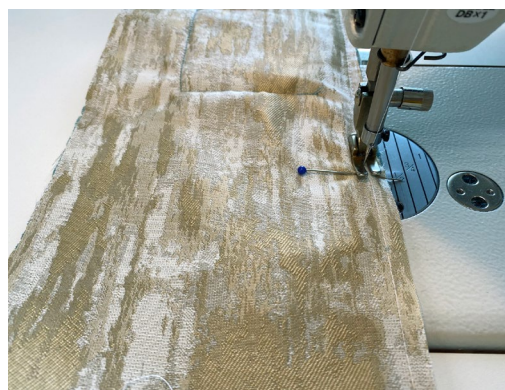
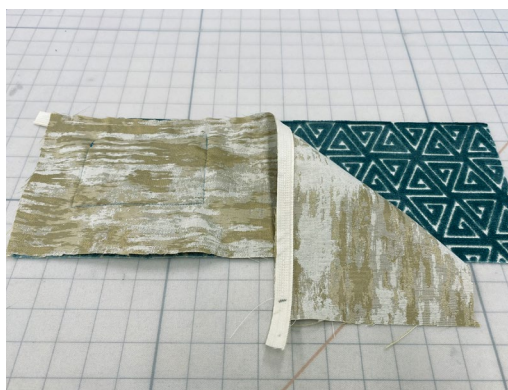


Add the Zipper

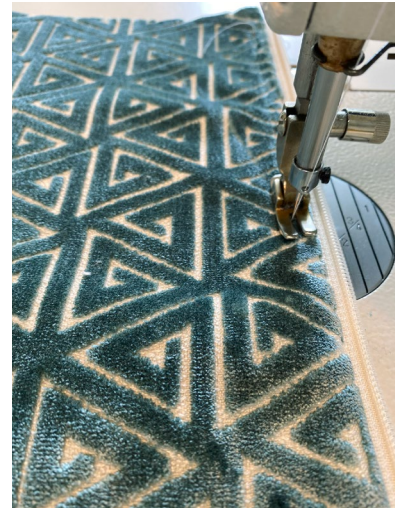
- 1 The zipper for this project is in one continuous piece and the zipper slide is added after the zipper is sewn to the fabrics.
- 2 Cut a regular zipper a few inches wider than the case cut size. Separate the zipper into two sections. Put one aside for another project.
- 3 Pin the wrong side of the zipper along the top edge of the case lining. Stitch, starting and stopping 1/2" from each end.



- 4 Place case right sides together and pin the zipper edge.
- 5 Stitch the top edge of the zipper.



- 6 Press the top edge of the zipper seam with a cool iron.
- 7 Topstitch the zipper seam, starting and stopping 1/2" from each end.



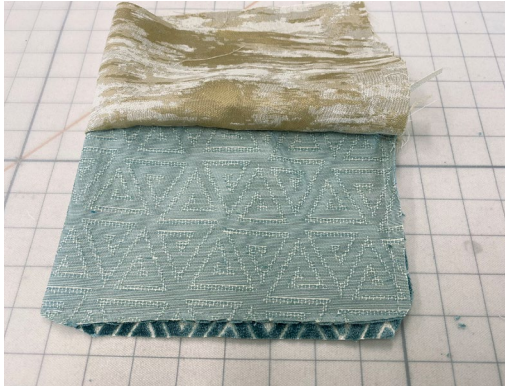
Stitch the Side & Bottom Seams of the Case

- 1 Place the case on the table, right sides up.
- 2 Fold the case, placing right sides together. Pin one side and bottom seam. Start stitching along the top edge, leaving the zipper free.
- 3 Stitch the side seam and bottom seam.

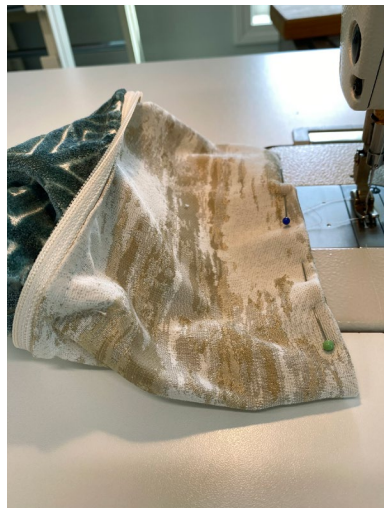


4 Clip the SA and the corners.

5 Stitch the side seam of the lining and across the bottom, leaving a hole for turning.



6 Turn the case right sides out. Fold the raw edges of the lining in and stitch the hole closed.



Complete the Case

1 Place the lining inside the case, matching corners.

2 Pull out one bottom corner centering the seam. Stitch across about 1" up from the corner. Repeat for the second corner.



3 Place the zipper slide on the zipper.

4 Poke the zipper ends inside the case.

5 Add a small tassel as a pull to the zipper slide.



Notice the
boxed corner
on the bottom
of the case.

