

**R** ROOMSCAPES

# How-To Guide

— FABRICATE AN —

## UPHOLSTERED BENCH



Opt for an upholstered bench at the foot of the guest bed - it's stylish and doubles as a luggage rack.

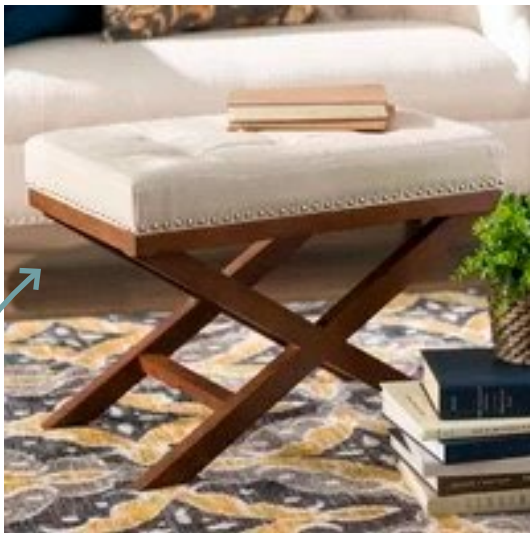
## PRODUCTS USED

ROWLEY PRODUCTS	ITEM #
Tufting Needle	<u>MH36</u>
Tufting Clasps	<u>CS36</u>
Upholstery Nailhead Trim Strips	<u>UNS10/</u>
Double Nylon Head Hammer	<u>MH16</u>
R-TEX Polyester Upholstery Batting, 30"	<u>PA50</u>
Crimp Button Forms, Size #45	<u>FCA45</u>
Grommet / Button Press	<u>GL</u>
Upholstery Air Stapler, Long Nose	<u>NS13LN</u>
71 Series Staples, ½" Length	<u>NS34/E</u>
Upholstery Regulator, 6"	<u>MH26</u>
Staple Puller Pliers	<u>MH41</u>
Professional Shears	<u>CU26</u>
R-TEX Polyfoam Welt Cord	<u>WC39/S</u>
Denim Deck Cover	<u>DK02/P</u>

## Find Inspiration

The inspiration for this bench project began with the thought of using a bench at the foot of the bed that could also double as a luggage rack.

X-Benches are very popular and there just happened to be a used bench available locally which was much like the inspiration bench. What a perfect way to refashion a slightly used bench into a new and useful bench for the guest room!



*inspiration*

*before*

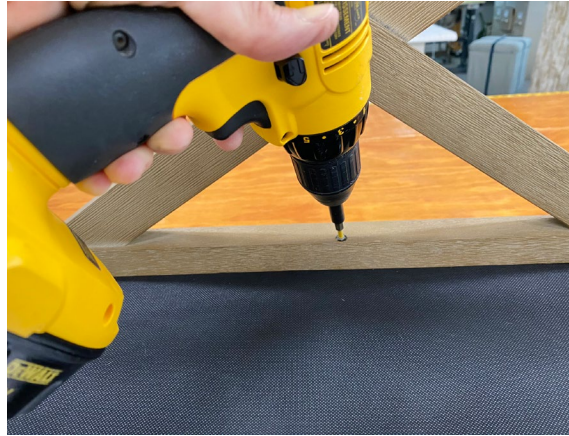


*after*

# Remove the Seat & Fabric from the Bench

1 Locate the screws holding the seat to the frame and remove.

2 Take photos of details prior to tearing down the bench.



3 Remove the staples holding the fabric to the frame using our Staple Puller Pliers.



See our Staple Puller Pliers in action »



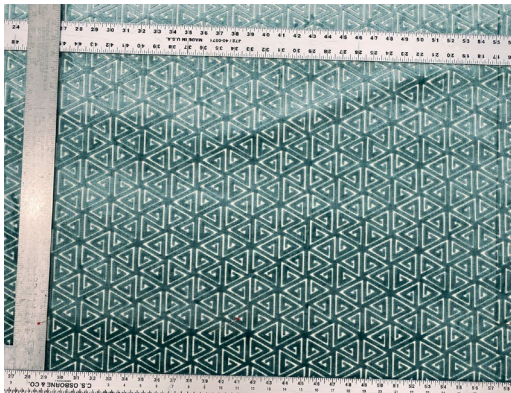
# Cut the Fabric

- Always inspect the fabric prior to cutting.
- Determine the fabric cut sizes based on the bench size, not the fabric that was removed from the bench which may be stretched out of shape.
- A 3/4" Seam Allowance (SA) was used for this project.



1 Use rulers to map out the fabric cut for the top of the bench seat.

2 Add the SA, mark the fabric, and cut the fabric for the bench top.



# Find the Pattern Match for the Four Side Boxing Strips

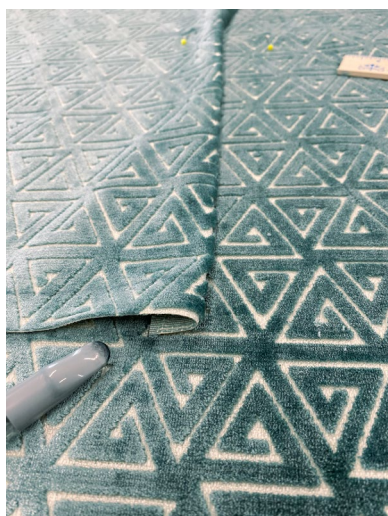
- The boxing sections for this project are cut into four pieces rather than one long strip.
- Each strip is cut the same width as the top section and 5 1/2" long.
- This fabric has a nap, so careful attention was given as the side pieces were marked and cut.

1 Find the pattern match between the top and one boxing strip.



2 Fold 3/4" to the back of the top section and mark there the cut placement for the boxing strip.

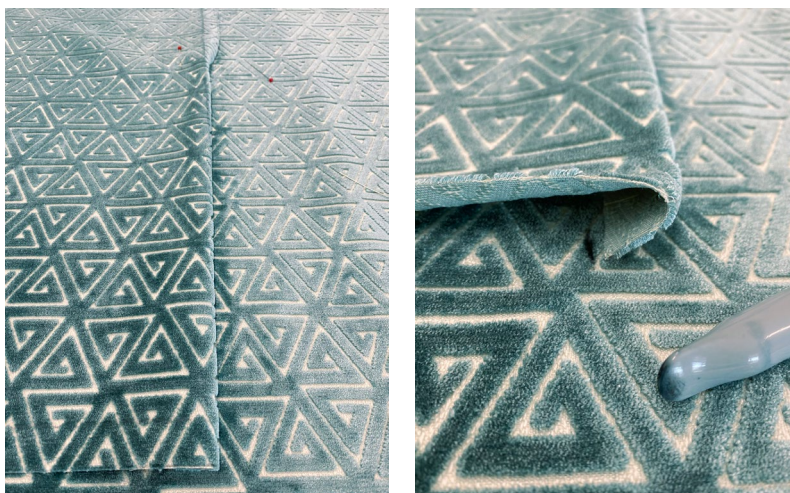
3 Mark the first boxing strip and cut.



Notice the color matching pins on these first two cuts. This will ensure the correct boxing strip is stitched to the correct side of the cushion top fabric.

## Repeat the Previous Steps for the Remaining Three Boxing Strips

- 1 Continue matching, folding, and finding the cut placement for the additional boxing sections.
- 2 Add a different colored pin for each new section.



- 3 Serge the edge of the boxing strips that will be stapled under the bench.

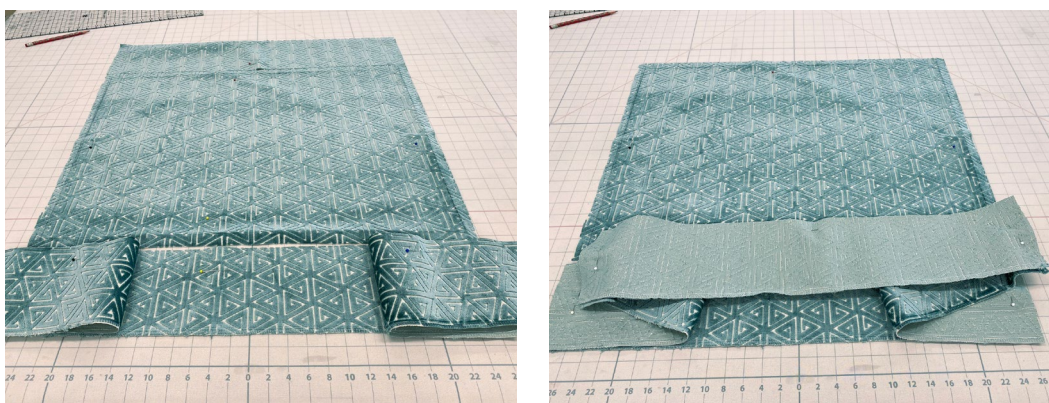


- 4 Lay the cut pieces on the table.

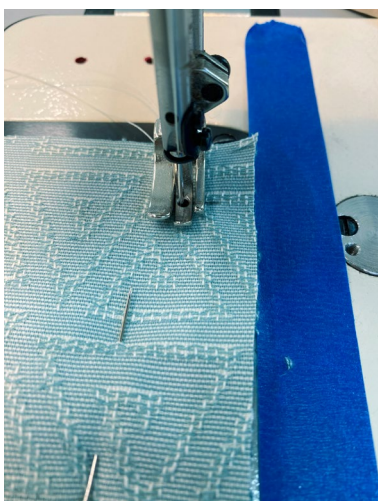


# Sew the Boxing Strips Together

- 1 Place the boxing strips together being mindful of the placement of each strip due to the pattern matching and the nap of the fabric.
- 2 Pin the boxing strips together along the short edges.



- 3 Stitch the 3/4" SA of the boxing strips, starting and stopping 3/4" from each edge.



- 4 The boxing is now ready to add to the seat top fabric.



# Sew the Boxing to the Seat Top Fabric

- 1 Lightly apply double stick tape to the SA of one side of the cushion seat fabric. Fold under 3/4" to the back.
- 2 Remove the protective paper from the tape. Find the pattern match on the boxing strip and press the two together.
  - Do this on the three remaining sides.
  - The tape should be along the outer edge of the boxing so that no stitches go through the tape as you are sewing.



- 3 Pin the boxing strip to the top fabric.
  - Notice the corner detail for stitching the boxing. This allows for perfect square corners every time.
- 4 Stitch the boxing to the seat fabric.



- 5 Remove the double stick tape after stitching the boxing to the seat fabric.

## OPTIONAL

As a decorative element, the boxing SA may be top stitched to the cushion seat top.

1 Press the SA towards the seat fabric.



2 Top stitch all the way around the cushion seat fabric.



# Add the Fabric Cover to the Bench Seat Frame

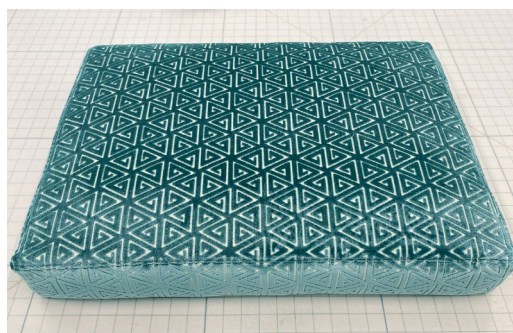
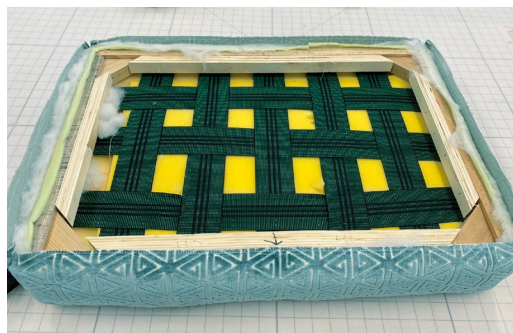
1 Place a piece of upholstery batting over the foam on the cushion seat. Clip away bulk at the corners.

2 Place the prepared fabric over the foam and bench frame.



3 Smooth the seams at the corners and make sure the batting is filling out the corners.

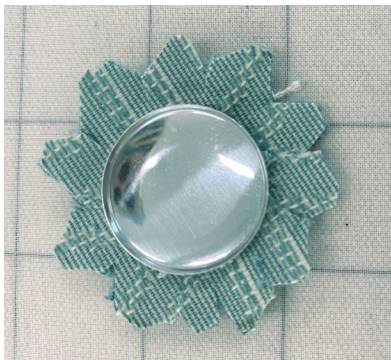
4 Staple the cover to the frame, starting in the centers, next the corners, and smoothing out between these as you complete stapling the fabric.



# Make a Button for the Center of the Bench Seat

This fabric was heavy, so a creative method was used to make a beautiful button.

- 1 Cut a piece of fabric for the size button being made.
- 2 Clip the fabric towards the button and remove excess.



- 3 Press the fabric and button top into the button die.
- 4 Press and crimp the button as normal.

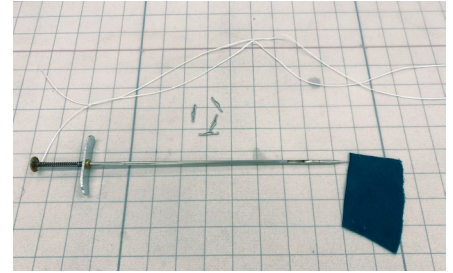


- 5 Removing the excess fabric bulk allowed the thick fabric to fold inside the button as it should.

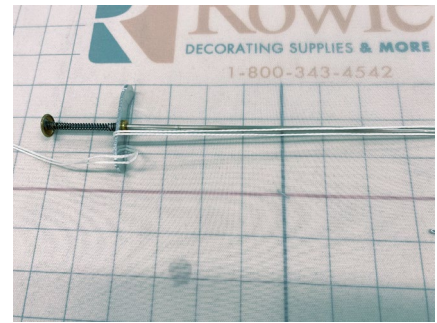
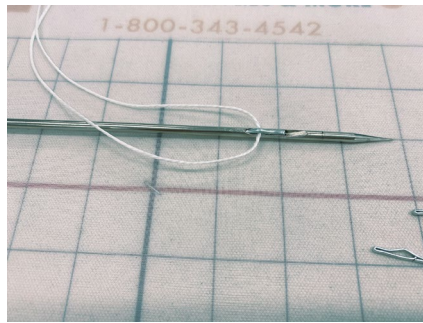
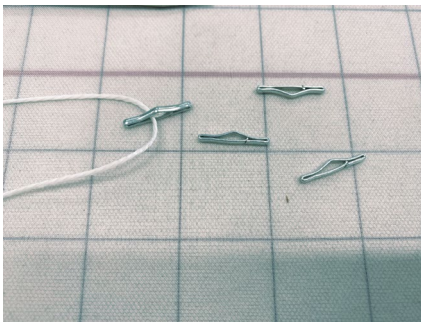


# Add the Button using Tufting Needle & Clasps

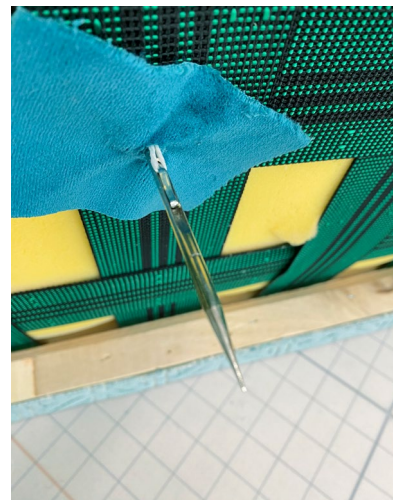
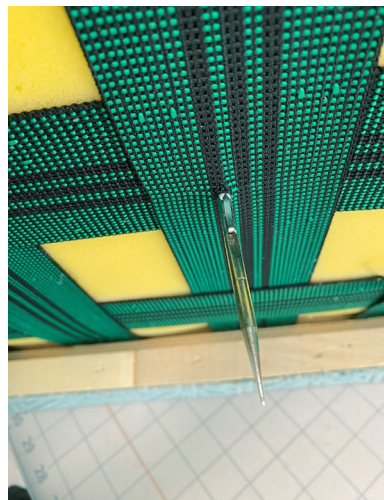
You will need the tool, a clip, a length of cord or button twine long enough to double and go through the bench seat and enough to pull on the back, and a small remnant of fabric.



- 1 Thread the cord through a Tufting Clasp.
- 2 Feed the Clasp into the opening above the point of the Tufting Needle.
- 3 Wrap the excess cord around the top of the Needle to keep it out of the way.



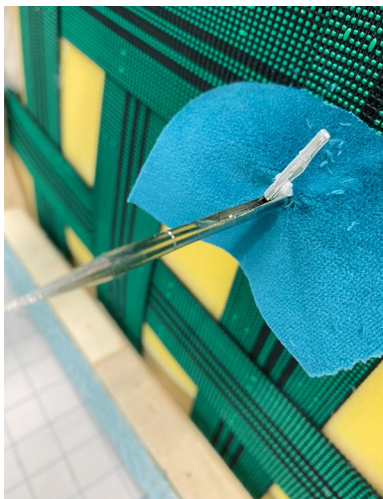
- 4 Insert the Tufting Needle through the center of the seat top.
  - Do not depress the spring at this time.
- 5 The Needle will exit through the center of the bottom of the seat.
- 6 The Needle will also be fed through the remnant of fabric.



- 7 With the Tufting Needle completely through the foam, depress the spring to release the Clasp underneath.



- 8 Pull the Tufting Needle back out of the foam. The two cords are coming out of the top in the center.



- 9 Place one piece of cord through the button shank.

- 10 Tie the cords securely and clip the cords.



# Complete the Bench Seat

- 1 Staple the dust cover to the bottom of the bench seat. We used Black Cambric, but our Denim Deck Cover DK02/P provides a more polished look.



- 2 Cut enough Upholstery Nailhead Trim Strip to wrap around the bench seat, including a little extra.

- 3 Using the supplied fastening nails, use a nylon head hammer to secure the strip to the bench.

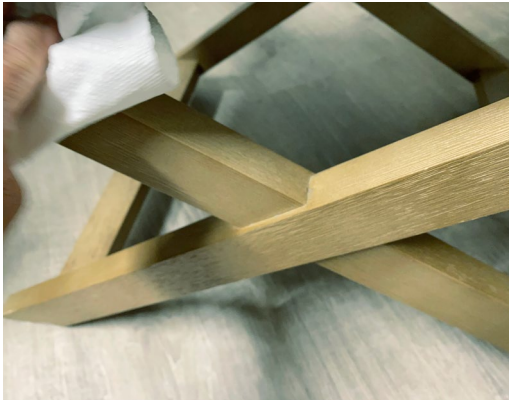
- 4 Remove any excess.



# Add the Bench Seat to the Bench Frame

1 If painting the bench, clean the frame and remove any dust or dirt.

2 Paint the bench in your method of choice and let dry.



3 Clamp the bench seat to the frame.

4 Insert the screws through the frame and into the seat frame.





## Fabrics Used in our Holiday Greetings Roomscape



RMCOCO  
Tiepo/Goldleaf



Clark & Clark  
Sontouso/Teal



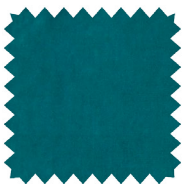
Greenhouse  
S3112/Moonglow



Fabricut  
Opulent Chevron/03



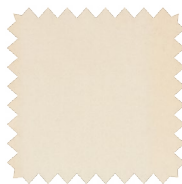
Greenhouse  
F2709-Aegean



Greenhouse  
A7941/Peacock



Stroheim  
Vinout Metallic/ Gold



Greenhouse  
S3310/Cloud



Greenhouse  
F2745/Moonglow