

How-To Guide

— FABRICATE A —

BED SKIRT WITH OVERLAYS



The overlays on this bed skirt hide the center seams along each side of the skirt.

PRODUCTS USED

ROWLEY PRODUCTS

ITEM

Whyte & Ivory, Manchester Sateen Wide Lining, Pale Ivory	<u>LNW101/</u>
Jumbo Wonder Clips	<u>QC42</u>
John James Hand Sewing Needles, Long Darners	<u>TP110</u>
Gütermann Polyester Thread	<u>TG1M/</u>
R-TEX Iron-On Bonding Tape	<u>FT50</u>
Basting / Tacking Gun	<u>ST26</u>
Basting / Tacking Fasteners	<u>ST28</u>
Professional Shears, Right or Left Grip	<u>CU24 or CU24/L</u>
Electric Rotary Cutter	<u>DT45</u>
Glass Head Straight Pins	<u>TP49</u>

Our Bed Skirt

- Made in three sections, and each has a band of fabric above the Bed Skirt.
- A Basting / Tacking Gun is used to attach the Bed Skirt to the box springs.
- For this project, the overlays were made of the same fabric as the skirt.
- For a pop of color or mix up in pattern or texture, the overlays may also be made in contrasting fabrics.
- The size and shape of the overlays may be different based on the fabric or fabric pattern used for the overlays.
- Consider the Finished Length (FL) of the Bed Skirt.
 - Carpet
 - Floor
 - Design element



Cut & Seam the Fabric

1 Cut the fabric based on the calculated sizes.



2 Cut the Lining = FL + 1".



3 Place the fabric right sides together, pin.



4 Stitch the seams.

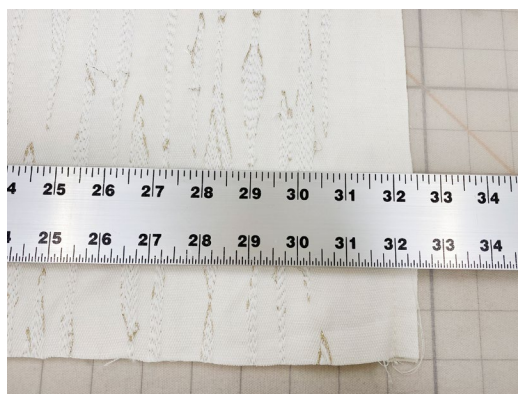


5 Clip the selvages.



Cut the Skirt Side Sections to the Finished Cut Width Size

- 1 With the skirt sections seamed, cut to size.
 - Finished Width (FW) of each side of the box springs + 1"



- 2 Press the seams open.



- 3 Do not throw away the excess cut off as these may be used for the overlays.



Cut the Overlays

1 There are three sizes of overlays.

A. Three for the center of each skirt section:

- 14" across the bottom, 6" across the top, and 18" long



B. Two for the corners of the bed:

- 16" at the bottom, 9" across the top, and 18" long



C. Two for each side of the skirt at the head of the bed:

- 7" across the bottom, 4" across the top, and 18" long



Sew the Overlays

- 1 Cut a piece of Lining the same size for each overlay.
- 2 Place the overlays and Lining pieces right sides together.
- 3 Stitch a 1/2" Seam Allowance (SA) along three sides of each overlay, leaving the top open for turning.



- 4 Clip the corners.



- 5 Turn right side out and press.



Sew the Skirt Sections

- This Bed Skirt has a double 2" bottom hem which adds enough body to hang beautifully.
- Place the skirt sections on the table, wrong side up, and have the bottom edge along the working edge of the table.

1 Press 4" to the back side of the skirt sections.

2 Fold and press the raw edge to the inside.



3 Place the Lining on the table and the Face Fabric (FF) on top, matching right sides.

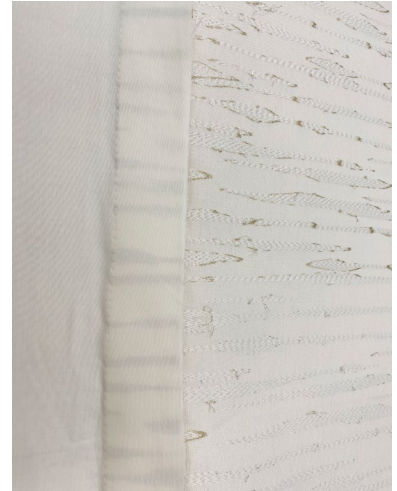
4 Pin along the 2" fold line. This will become the stitch line for the hem.

5 Stitch the hem.



Press the Skirt Sections

- 1 Place the skirt on the table.
- 2 Unfold so that both the wrong sides of the FF and Lining are up.
- 3 Press the 2" SA toward the FF.



- 4 Bring the skirt and Lining wrong sides together and press the bottom hem.
 - All layers of the FF and Lining should be laying in the direction of the bottom hem.



Hem the Sides of the Skirt Sections

- 1 Fold the skirt sections, with the right sides together with the Lining.
 - The bottom hem crease will be at the bottom with all the layers of the fabric along the bottom hem.



- 2 Check for the correct FW of each section, mark adding a 1/2" SA. Remove excess fabric if necessary.



- 3 Stitch the side hem.



Notice the detail of the bottom hem with the layers of fabric in the hem.

4 Clip the corners.



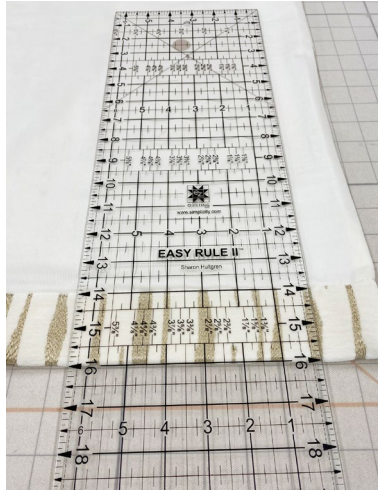
5 Turn right side out.

6 Press.

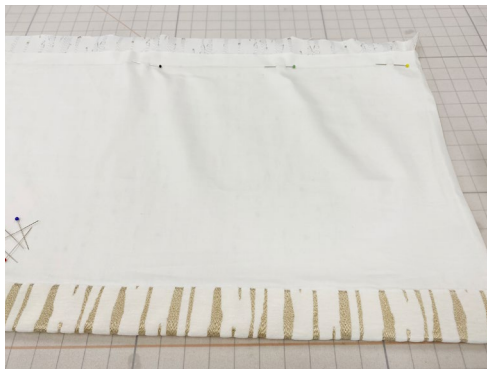


Add the Overlays to the Skirt Sections

- 1 Measure each skirt section and draw a line on the Lining side for the FL.



- 2 Pin the Lining and FF before stitching along the FL line.



- 3 Pin the center overlays over the center seam of each skirt section.



4 Stitch the overlays at the skirt FL.



5 Add the smaller overlays on the two skirt side sections and stitch in place.

- These will be toward the head of the bed, not the foot.

Complete the Two Overlays for the Foot of the Bed

1 Serge the top edges of the overlays.

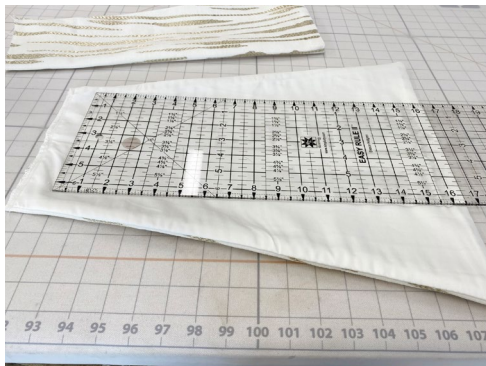


2 Fold these in half and press the center.



3 Mark for the FL of the overlay, leaving 2" above the FL.

4 Stitch along the FL line.



5 Fold in half, right sides together and draw a line for a mitered corner.



6 Stitch on the miter line.



7 Flatten out the mitered corner and stitch this from the back of the overlay.



Add the Band to the Top of the Skirt Sections

- Serge along one long edge of each of the skirt bands.

- 1 Fold the bands right sides together along the short edges, offsetting the fold so that the serged edge is 1/2" above the raw edge.
- 2 Stitch a 1/2" SA. Clip the corners.
- 3 Turn the bands right sides out. Press.
- 4 Pin the bands to the top edge of the skirts.



- 5 Stitch a 1/2" SA.



- 6 Press the SA towards the band.



Complete the Bands

1 Fold the bands towards the back of the skirt. Press.



2 Close the band in your method of choice.

- Hand stitch
- Top stitch at the machine
- Iron-On Bonding Tape



3 At installation, use a Basting / Tacking Gun to attach the skirt sections to the box springs.





Fabrics Used in our Holiday Greetings Roomscape



RMCOCO
Tiepo/Goldleaf



Clark & Clark
Sontouso/Teal



Greenhouse
S3112/Moonglow



Fabricut
Opulent Chevron/03



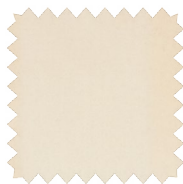
Greenhouse
F2709-Aegean



Greenhouse
A7941/Peacock



Stroheim
Vinout Metallic/ Gold



Greenhouse
S3310/Cloud



Greenhouse
F2745/Moonglow