

Modern Updates That Sell: Fabricate Banded Pillows & Scaldino

Help your clients update a bedroom by refurbishing their existing bedding. Adding a contrast band or cuffs to pillows to coordinate with a new Scaldino allows you to get creative and gives your customer the option to change the look of the room with the change of seasons.



Materials & Supplies

Rowley Products

- Flexi Tape Measure
- Polyester Batting
- Jumbo Wonder Clips
- R-TEX Iron-On Bonding Tape

Item

- [DT16](#)
- [PF76](#)
- [QC42](#)
- [FT50](#)

Fabricate Banded Pillows & Scaldino: Step-By-Step Instructions

Another way to add value to your client's bedding is making reversible pillows, shams and duvet covers.



Refurbish Pillows with a Decorative Band

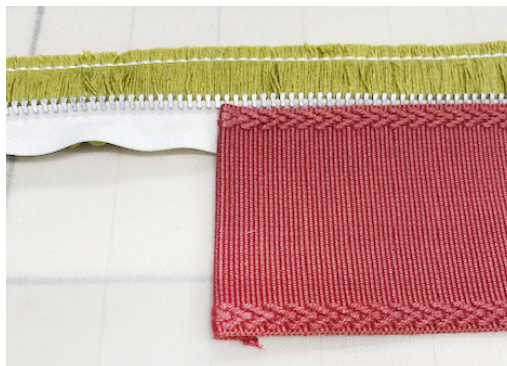
- 1 Get creative by layering trims to create a unique band for an existing bolster pillow. Layer the trims on the bolster or pillow, take a photo for a better idea of how your trims are going to look.
- 2 Wrap the trim around the pillow. Cut enough to tuck in both ends and have enough to overlap the band by a few inches.



- 3 The zipper and the brush fringe will go along both long ends of the band and one short end, so cut these accordingly. Sew the zipper and brush fringe together first.



- 4 Press the short edges of the tape trim to the wrong side.

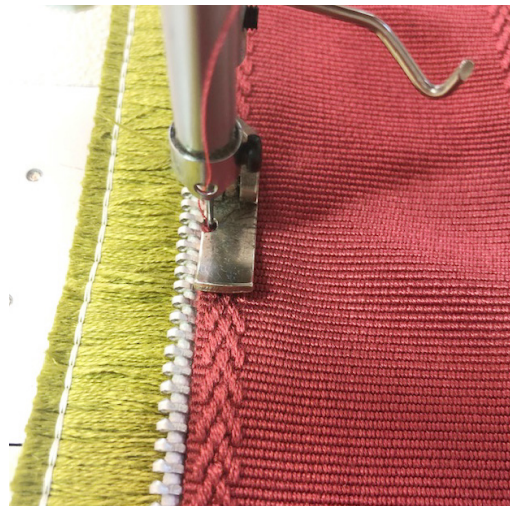
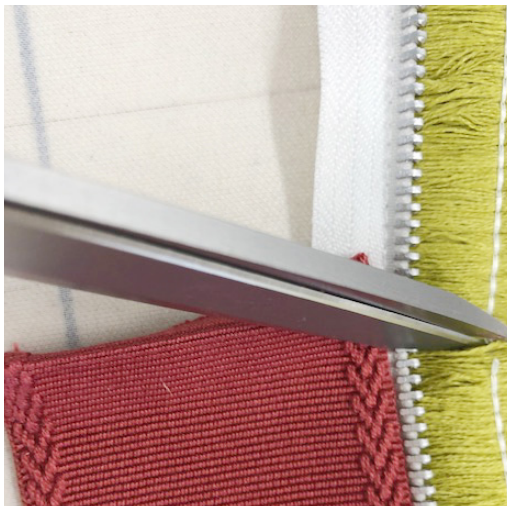


- 5 Glue baste the zipper lip and the tape trim together.



- 6 Clip the corner thread of the brush fringe to allow the brush fringe to turn the corner.

- 7 Once the glue basting is dry, stitch all layers of trim together.



- 8 Make a button embellishment. Make a fabric covered button. Add Sealoh tape to the bottom of the button.

- 9 Cut enough brush fringe to wrap around the bottom of the button. Secure the edges of the fringe so that it will not fall apart.



- 10 Stitch the button to the band.
- 11 Overlap the edges of the band to fit the pillow and stitch. Add the band to the pillow and admire the new look of your pillow. Fluff the brush fringe as necessary.



Plan, Measure, Cut & Fabricate a Scaldino

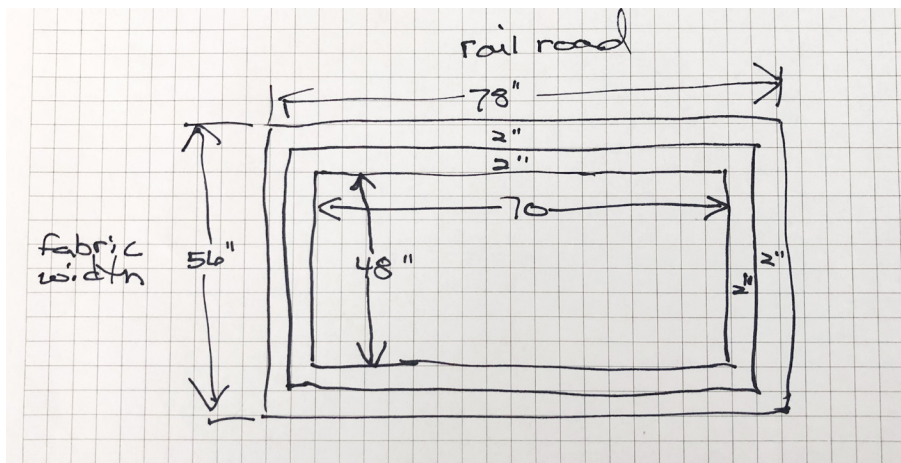
The Scaldino for this bed is folded into thirds so that it may also be used as a bed throw. It is made to be reversible. The reverse side is folded to the front to create a 2" band and has mitered corners. A small decorative braid cord is inserted along the inside edge of the flange for a pop of color matching other colors in the room.



- 1 Measure the bed width using a Flexi Tape Measure. On the sides, the Scaldino should not drop down further than the bed covering.



- 2 Determine the fabric cut size for the Scaldino. The fabric cut size equals the Scaldino finished size plus the flange size times four. Note: For this Scaldino, the fabric was railroaded. The cut size for this Scaldino equals 78" x 56".



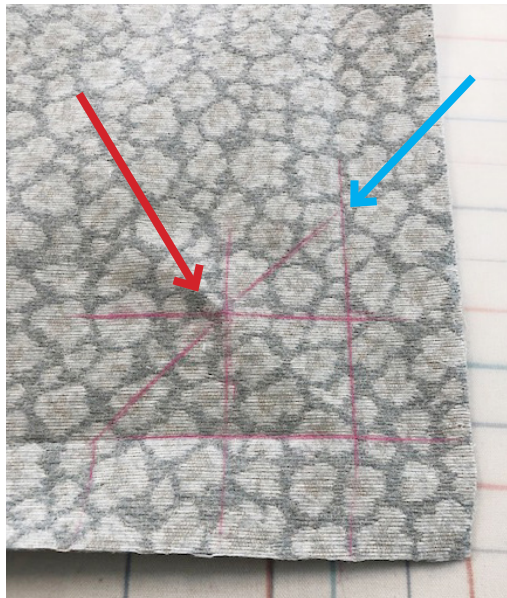
- 3 For the flange, fold and press all the way around the fabric. Next, fold again and press, creating a double fold of the fabric.



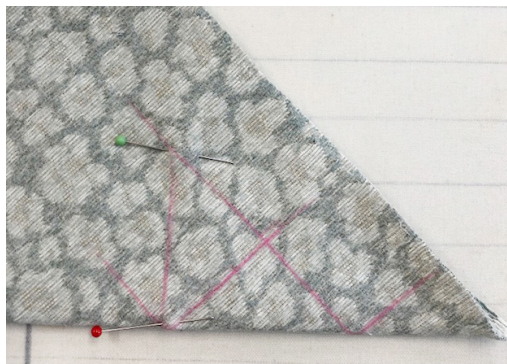
- 4 This photo has lines drawn to indicate the outside corner of the flange and the stitch line.

The **RED** arrow indicates the outside corner of the flange.

The **BLUE** arrow indicates the stitch line.



- 5 Fold each of the corners right sides together and pin, matching the lines on the fabric.



- 6 Stitch the corner by sewing starting and stopping at each pin.



- 7 Trim the corner removing excess fabric.



- 8 Press the seam open.



9 Turn the corners right side out.



10 For a little fill to this Scaldino, bump interlining was used. Cut the fill about 1/4" smaller than the finished size of the Scaldino.



11 Fold this into thirds and sew an interlocking stitch to secure the bump to the Scaldino fabric. This will prevent the fabrics from shifting.

Check out this YouTube video on [Sewing An Interlock Stitch In Drapery](#).



- 12 Follow the above directions for the contrast fabric for the Scaldino for the cut size and the interlocking of the layers together.



- 13 Fold the flanges over the face fabric and smooth the layers. Next apply Iron-On Bonding Tape on the lip of the decorative braid cord.



- 14 Remove the protective paper and insert the braid cord under the flange and press into place.



- 15 To complete the Scaldino, pin the flange or use Jumbo Wonder Clips to hold all the edges securely. Stitch in the ditch to join all the layers of the flange together.



- 16 The Scaldino is completed with a stitched flange through all layers.





Before



After