

Colorful, Reversible Placemats

Learn to fabricate creative tableware for your chic dining room, drenched in colorful brilliance to celebrate coming together with friends and family this summer.



Materials & Supplies

Rowley Products

Pen Style Chalk Markers

Sewing Gauge

Glass Head Straight Pins

Item

[WW13](#)

[MR16](#)

[TP49](#)

Colorful, Reversible Placemats: Step-By-Step Instructions

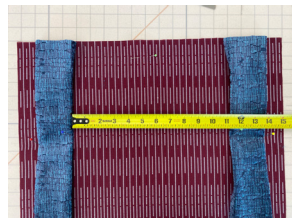
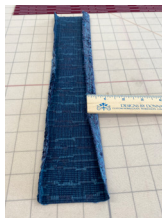
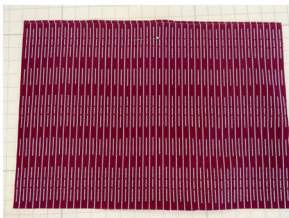
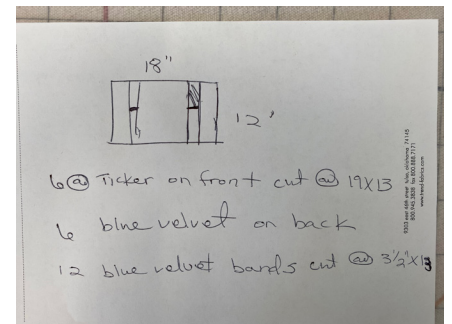
The placemats for this project are reversible.

- Each placemat has a contrast band with a bow tie for the silverware to rest inside.
- When designing placemats, consider the size of the plates, napkins, glassware, or anything else that will be sitting on the placemat.
- Remember in custom, not all things are standard sizes or shapes.

Placemat Plan & Cutting:

The placemats for this project measure 18" x 12". The fabric is cut at 19" x 13".

- 1 Cut the placemat fabric for the front and back.
- 2 Cut the contrast bands for the placemat front, adding a 1/2" Seam Allowance (SA) to both long ends.
- 3 Space the bands on the placemat front, wide enough for the plate to sit between the bands.
- 4 Cut ribbon or ties long enough to make a small bow and for the tails to wrap around the contrast band.



- 5 Pin the contrast bands to the placemat fronts.
- 6 Wrap the ties around the bands.
- 7 Sew the contrast bands to the placemat tops by topstitching the bands close to the long edges. Catch the sides of the ties as you are topstitching.
- 8 Pin the placemat front to the placemat back, matching right sides together.
- 9 Sew around all four sides, leaving a hole for turning.
- 10 Close the hole using your method of choice.
- 11 Press the placemat to complete.

