

Color Blocked Panels on R-TEC Automation® Finestra® Custom Decorative Hardware Traverse System

Discover how-to fabricate playful color-blocked window treatments using reverse pleat panels on R-TEC Automation® Finestra® Custom Decorative Hardware from our Gather Chic Dining Roomscape.



Materials & Supplies

Rowley Products

Sealah Flat Shaper Wire

Item

[SLW02/10](#)

Sealah No-Sew Adhesive Tape

[SLT50](#)

R-TEX Non-Woven Permanent Buckram

[BN34](#)

Whyte & Ivory Lining

[Linings](#)

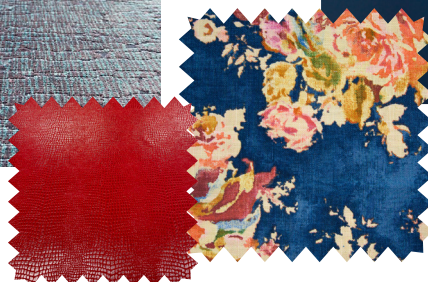
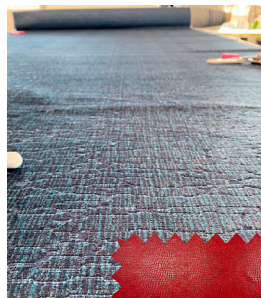
Whyte & Ivory Interlining

[Interlinings](#)

Color Blocked Panels: Step-By-Step Instructions

These reverse box pleat panels have color blocking at the top of the panel and contrast bands above and below the color blocking.

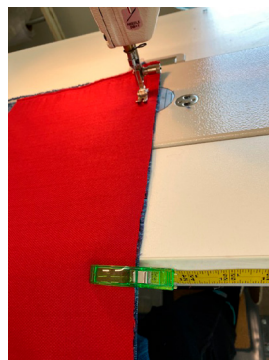
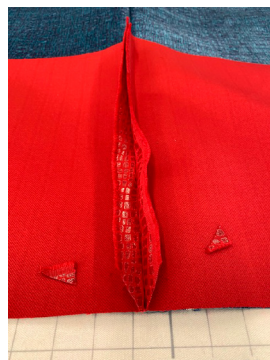
- The color blocked top portion is made as a valance before adding to the drapery panel.
- The contrast band at the top of the panel wraps to the back of the panel and wraps around the buckram on the back of the panel.
- The blue velvet color blocking fabric is upholstery weight and the red contrast band is a 'skin' fabric and cannot be pressed.
- The main panel fabric is a linen fabric with a loose weave and is interlined.
- All hems were sewn by hand.
- The back of boxed pleats were tacked below the buckram.
- The top of the pleats were tacked to keep them in place.



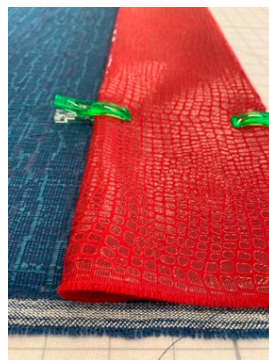
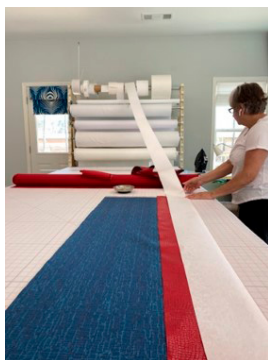
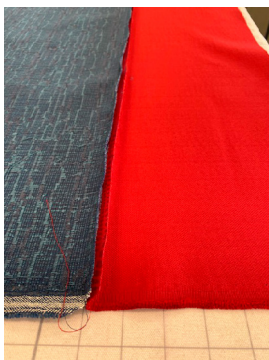
Prepare the Top of the Panel & the Contrast Bands:

The color blocked portion of the panel is made as an attached valance at the top of the panel.

- 1 Cut the color blocked fabric portion of the panel to the finished length.
- 2 Seam any widths together if necessary.
- 3 Cut the top contrast band equal to the finished size of the band plus enough to wrap around the buckram on the back of the panel.
- 4 Pin the top of the color blocked valance fabric to the contrast band, or use Jumbo Wonder Clips QC42. Stitch the seam.



- 5 Press the Seam Allowance (SA) toward the contrast band.
- 6 Fold the contrast band fabric toward the back of the panel.
- 7 Cut a piece of buckram for the top of the panel and wrap the band fabric around the buckram. Clip or pin in place.



- 8 Cut the contrast fabric bands for the bottom edge of the valance four times the finished desired length. For this band of $\frac{3}{4}$ ", the band was cut at 3".
- 9 Pin or clip to the bottom edge of the valance. Stitch a $\frac{3}{4}$ " SA.
- 10 Press the SA towards the contrast band.
- 11 Wrap the remaining band around the back of the panel tucking the raw edge inside.

12

Hand tack the band to the back of the valance fabric.



Prepare the Panel Fabric:

- 1 Cut the panel fabric the finished length of the drapery plus the bottom hem allowance.
- 2 Seam the widths together if necessary.
- 3 Cut the lining the finished length of the drapery minus 1" plus the hem allowance. Seam widths together if necessary.
- 4 If using interlining, cut the interlining the finished length of the drapery minus 2". Seam widths together if necessary.
- 5 Press and hem the bottom of the panel fabric, lining and interlining if using.

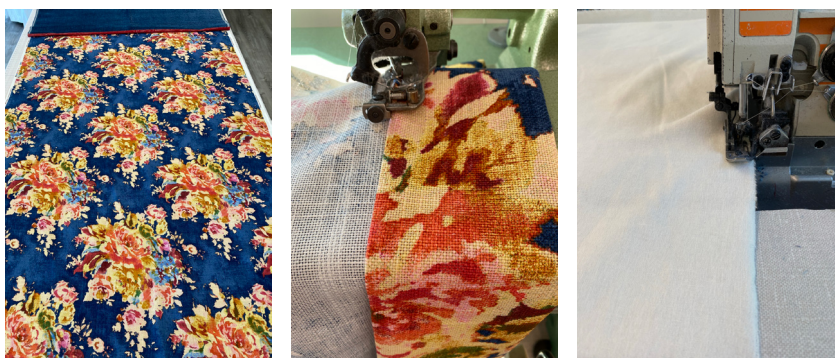


Table the Panels:

The top of the panel tucks in behind the buckram.

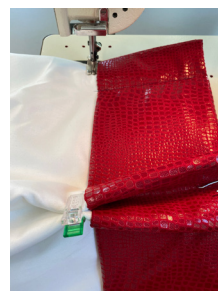
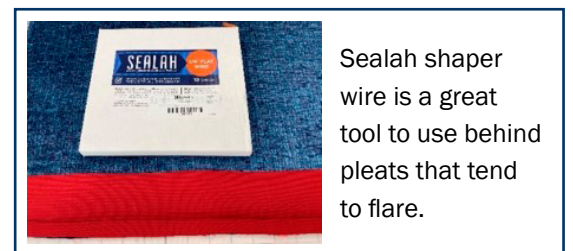
- 1 Mark the table for the finished length of the panel.
- 2 Place the valance portion of the panel face down on the table.
- 3 Place the panel fabric on the table, face down.
- 4 Layer the interlining and lining on the panels, right side up.
- 5 At the top of the panel, place the face fabric, and lining(s) under the buckram. Fold the drapery header fabric over and under the buckram. Clip in place.
- 6 Press the side hems, remove bulk where necessary, and close using your method of choice.
- 7 Determine the pleat and spaces for the panel and pin in place.



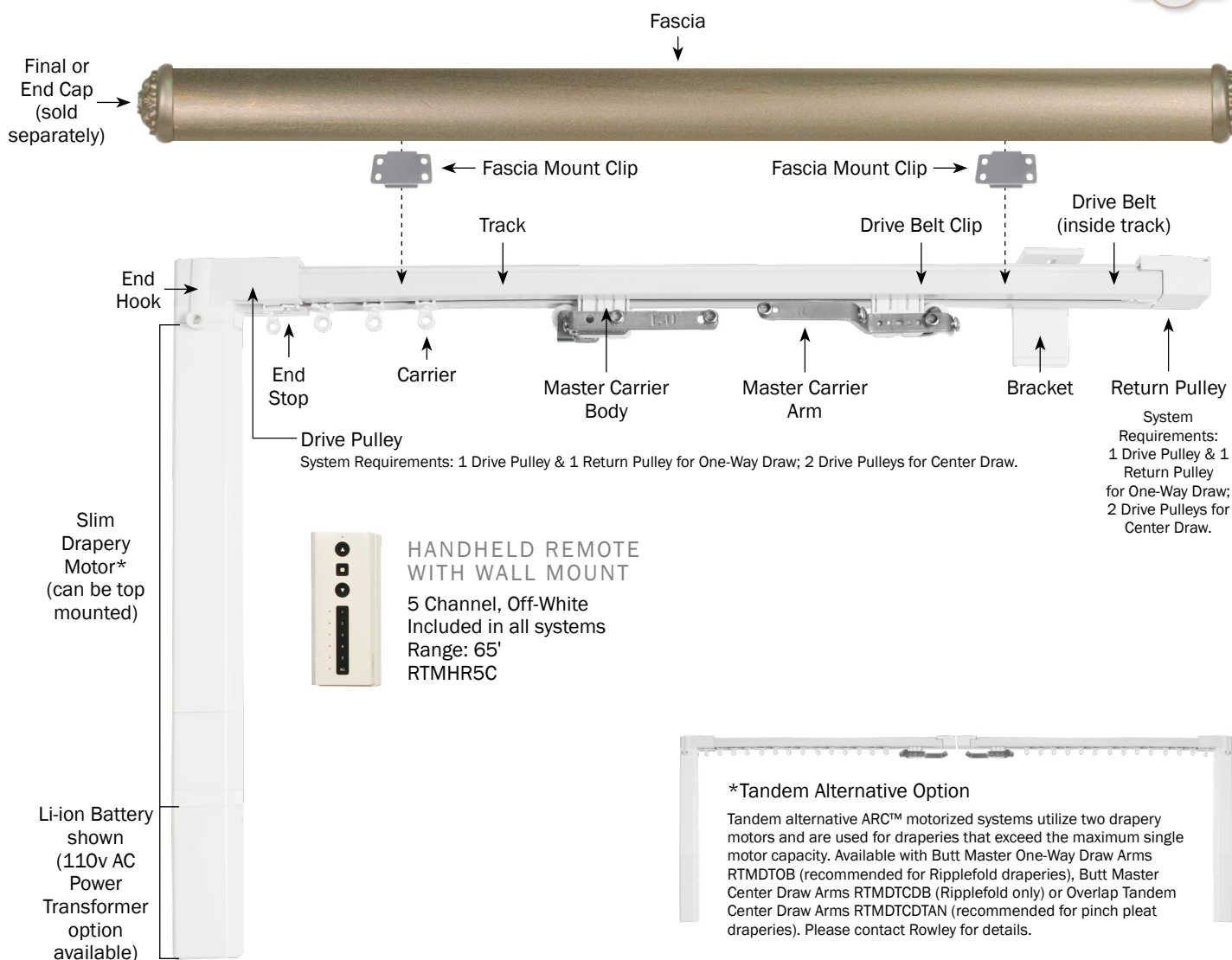
Sew the Pleats & Complete the Panel:

Reverse pleats are stitched to the back of the panel.

- 1 Pin or clip the pleats. Stitch the pleat.
- 2 Fold a two-finger pleat on the reverse side of the panel.
- 3 Insert a drapery pin between the two fingers of the pleat.
- 4 Stitch the pleat just under the buckram.



Finestra® Custom Decorative Hardware Traverse System with a Decorative Fascia:



How-To Order an **Finestra® Custom Decorative Hardware Traverse System with a Decorative Fascia:**

- 1 SELECT YOUR SYSTEM**
 Single or double system.
- 2 SELECT YOUR TRACK COLOR**
 White or bronze.
- 3 SELECT YOUR MOTOR POWER**
 Pick from Li-ion Battery or 110v AC Power Transformer.



custom solutions

*Ships to you fully assembled and custom cut to your exact specification in 10 - 15 business days.

4

SELECT YOUR DRAPERY STYLE, DRAW & MASTER CARRIER

Pinch Pleat or Ripplefold. One-Way Draw Right or Left, or Center Draw. Overlap or Butt Master (RF only).



PINCH PLEAT

- Carriers available in White or Bronze.



RIPPLEFOLD

- Carriers available in White or Bronze.
- 60%, 80%, 100% and 120% fullness available; please specify fullness on order.
- Overlap Master Carriers are standard.
- Butt Master Carriers available, allowing some light to filter between draperies on center draw treatments. Must be specified for substitution.

5

SELECT YOUR FINISH, FASCIA STYLE & FINIALS

25 custom finishes. Smooth, Reeded or Square Fascia. Finials and End Caps sold separately.

6

SELECT YOUR R-TEC SMART CONTROLS

System includes handheld 5 channel remote. Take your drapery control to the next level by upgrading to the R-TEC Hub to integrate your draperies with whole home and voice control systems.

custom solutions forms **R-TEC AUTOMATION**

FINESTRA® CUSTOM HARDWARE TRAVERSE R-TEC AUTOMATION TRACK SYSTEM REV January 1, 2021

Wall Mount Pinch Pleat & Ripplefold **ACCOUNT #**

Company: _____ Contact: _____ Date: _____
 Street address: _____ Person to contact with technical questions: _____
 City: _____ State: _____ Zip: _____ PO: _____ Pk: _____
 E-mail: _____ (required for shipping confirmation)
 Ship to: (if different from above) _____
 Street: _____ City: _____ State: _____ Zip: _____

PLEASE COMPLETE ITEMS 1 THROUGH 7. For assistance, call Customer Service at 866.986.5423.

1. Total number of systems to be made to these specifications. _____ (Use another order form for systems with different specifications)

2. FRONT TRACK INFORMATION
 Length: _____ ft. _____ in. **NOTE** - Components will match track color unless otherwise noted.
 Color: ☐ WHITE ☐ BRONZE ☐ Single Wall Mount ☐ Double Wall Mount ☐ 12" x 12" ☐ 12" x 14" ☐ 12" x 16" ☐ 12" x 18" ☐ 12" x 20" ☐ 12" x 24" ☐ 12" x 30" ☐ 12" x 36" ☐ 12" x 48" ☐ 12" x 60" ☐ 12" x 72" ☐ 12" x 84" ☐ 12" x 96" ☐ 12" x 108" ☐ 12" x 120" ☐ 12" x 144" ☐ 12" x 168" ☐ 12" x 192" ☐ 12" x 216" ☐ 12" x 240" ☐ 12" x 264" ☐ 12" x 288" ☐ 12" x 312" ☐ 12" x 336" ☐ 12" x 360" ☐ 12" x 384" ☐ 12" x 408" ☐ 12" x 432" ☐ 12" x 456" ☐ 12" x 480" ☐ 12" x 504" ☐ 12" x 528" ☐ 12" x 552" ☐ 12" x 576" ☐ 12" x 600" ☐ 12" x 624" ☐ 12" x 648" ☐ 12" x 672" ☐ 12" x 696" ☐ 12" x 720" ☐ 12" x 744" ☐ 12" x 768" ☐ 12" x 792" ☐ 12" x 816" ☐ 12" x 840" ☐ 12" x 864" ☐ 12" x 888" ☐ 12" x 912" ☐ 12" x 936" ☐ 12" x 960" ☐ 12" x 984" ☐ 12" x 1008" ☐ 12" x 1032" ☐ 12" x 1056" ☐ 12" x 1080" ☐ 12" x 1104" ☐ 12" x 1128" ☐ 12" x 1152" ☐ 12" x 1176" ☐ 12" x 1200" ☐ 12" x 1224" ☐ 12" x 1248" ☐ 12" x 1272" ☐ 12" x 1296" ☐ 12" x 1320" ☐ 12" x 1344" ☐ 12" x 1368" ☐ 12" x 1392" ☐ 12" x 1416" ☐ 12" x 1440" ☐ 12" x 1464" ☐ 12" x 1488" ☐ 12" x 1512" ☐ 12" x 1536" ☐ 12" x 1560" ☐ 12" x 1584" ☐ 12" x 1608" ☐ 12" x 1632" ☐ 12" x 1656" ☐ 12" x 1680" ☐ 12" x 1704" ☐ 12" x 1728" ☐ 12" x 1752" ☐ 12" x 1776" ☐ 12" x 1800" ☐ 12" x 1824" ☐ 12" x 1848" ☐ 12" x 1872" ☐ 12" x 1896" ☐ 12" x 1920" ☐ 12" x 1944" ☐ 12" x 1968" ☐ 12" x 1992" ☐ 12" x 2016" ☐ 12" x 2040" ☐ 12" x 2064" ☐ 12" x 2088" ☐ 12" x 2112" ☐ 12" x 2136" ☐ 12" x 2160" ☐ 12" x 2184" ☐ 12" x 2208" ☐ 12" x 2232" ☐ 12" x 2256" ☐ 12" x 2280" ☐ 12" x 2304" ☐ 12" x 2328" ☐ 12" x 2352" ☐ 12" x 2376" ☐ 12" x 2400" ☐ 12" x 2424" ☐ 12" x 2448" ☐ 12" x 2472" ☐ 12" x 2496" ☐ 12" x 2520" ☐ 12" x 2544" ☐ 12" x 2568" ☐ 12" x 2592" ☐ 12" x 2616" ☐ 12" x 2640" ☐ 12" x 2664" ☐ 12" x 2688" ☐ 12" x 2712" ☐ 12" x 2736" ☐ 12" x 2760" ☐ 12" x 2784" ☐ 12" x 2808" ☐ 12" x 2832" ☐ 12" x 2856" ☐ 12" x 2880" ☐ 12" x 2904" ☐ 12" x 2928" ☐ 12" x 2952" ☐ 12" x 2976" ☐ 12" x 3000" ☐ 12" x 3024" ☐ 12" x 3048" ☐ 12" x 3072" ☐ 12" x 3096" ☐ 12" x 3120" ☐ 12" x 3144" ☐ 12" x 3168" ☐ 12" x 3192" ☐ 12" x 3216" ☐ 12" x 3240" ☐ 12" x 3264" ☐ 12" x 3288" ☐ 12" x 3312" ☐ 12" x 3336" ☐ 12" x 3360" ☐ 12" x 3384" ☐ 12" x 3408" ☐ 12" x 3432" ☐ 12" x 3456" ☐ 12" x 3480" ☐ 12" x 3504" ☐ 12" x 3528" ☐ 12" x 3552" ☐ 12" x 3576" ☐ 12" x 3600" ☐ 12" x 3624" ☐ 12" x 3648" ☐ 12" x 3672" ☐ 12" x 3696" ☐ 12" x 3720" ☐ 12" x 3744" ☐ 12" x 3768" ☐ 12" x 3792" ☐ 12" x 3816" ☐ 12" x 3840" ☐ 12" x 3864" ☐ 12" x 3888" ☐ 12" x 3912" ☐ 12" x 3936" ☐ 12" x 3960" ☐ 12" x 3984" ☐ 12" x 4008" ☐ 12" x 4032" ☐ 12" x 4056" ☐ 12" x 4080" ☐ 12" x 4104" ☐ 12" x 4128" ☐ 12" x 4152" ☐ 12" x 4176" ☐ 12" x 4200" ☐ 12" x 4224" ☐ 12" x 4248" ☐ 12" x 4272" ☐ 12" x 4296" ☐ 12" x 4320" ☐ 12" x 4344" ☐ 12" x 4368" ☐ 12" x 4392" ☐ 12" x 4416" ☐ 12" x 4440" ☐ 12" x 4464" ☐ 12" x 4488" ☐ 12" x 4512" ☐ 12" x 4536" ☐ 12" x 4560" ☐ 12" x 4584" ☐ 12" x 4608" ☐ 12" x 4632" ☐ 12" x 4656" ☐ 12" x 4680" ☐ 12" x 4704" ☐ 12" x 4728" ☐ 12" x 4752" ☐ 12" x 4776" ☐ 12" x 4800" ☐ 12" x 4824" ☐ 12" x 4848" ☐ 12" x 4872" ☐ 12" x 4896" ☐ 12" x 4920" ☐ 12" x 4944" ☐ 12" x 4968" ☐ 12" x 4992" ☐ 12" x 5016" ☐ 12" x 5040" ☐ 12" x 5064" ☐ 12" x 5088" ☐ 12" x 5112" ☐ 12" x 5136" ☐ 12" x 5160" ☐ 12" x 5184" ☐ 12" x 5208" ☐ 12" x 5232" ☐ 12" x 5256" ☐ 12" x 5280" ☐ 12" x 5304" ☐ 12" x 5328" ☐ 12" x 5352" ☐ 12" x 5376" ☐ 12" x 5400" ☐ 12" x 5424" ☐ 12" x 5448" ☐ 12" x 5472" ☐ 12" x 5496" ☐ 12" x 5520" ☐ 12" x 5544" ☐ 12" x 5568" ☐ 12" x 5592" ☐ 12" x 5616" ☐ 12" x 5640" ☐ 12" x 5664" ☐ 12" x 5688" ☐ 12" x 5712" ☐ 12" x 5736" ☐ 12" x 5760" ☐ 12" x 5784" ☐ 12" x 5808" ☐ 12" x 5832" ☐ 12" x 5856" ☐ 12" x 5880" ☐ 12" x 5904" ☐ 12" x 5928" ☐ 12" x 5952" ☐ 12" x 5976" ☐ 12" x 6000" ☐ 12" x 6024" ☐ 12" x 6048" ☐ 12" x 6072" ☐ 12" x 6096" ☐ 12" x 6120" ☐ 12" x 6144" ☐ 12" x 6168" ☐ 12" x 6192" ☐ 12" x 6216" ☐ 12" x 6240" ☐ 12" x 6264" ☐ 12" x 6288" ☐ 12" x 6312" ☐ 12" x 6336" ☐ 12" x 6360" ☐ 12" x 6384" ☐ 12" x 6408" ☐ 12" x 6432" ☐ 12" x 6456" ☐ 12" x 6480" ☐ 12" x 6504" ☐ 12" x 6528" ☐ 12" x 6552" ☐ 12" x 6576" ☐ 12" x 6600" ☐ 12" x 6624" ☐ 12" x 6648" ☐ 12" x 6672" ☐ 12" x 6696" ☐ 12" x 6720" ☐ 12" x 6744" ☐ 12" x 6768" ☐ 12" x 6792" ☐ 12" x 6816" ☐ 12" x 6840" ☐ 12" x 6864" ☐ 12" x 6888" ☐ 12" x 6912" ☐ 12" x 6936" ☐ 12" x 6960" ☐ 12" x 6984" ☐ 12" x 7008" ☐ 12" x 7032" ☐ 12" x 7056" ☐ 12" x 7080" ☐ 12" x 7104" ☐ 12" x 7128" ☐ 12" x 7152" ☐ 12" x 7176" ☐ 12" x 7200" ☐ 12" x 7224" ☐ 12" x 7248" ☐ 12" x 7272" ☐ 12" x 7296" ☐ 12" x 7320" ☐ 12" x 7344" ☐ 12" x 7368" ☐ 12" x 7392" ☐ 12" x 7416" ☐ 12" x 7440" ☐ 12" x 7464" ☐ 12" x 7488" ☐ 12" x 7512" ☐ 12" x 7536" ☐ 12" x 7560" ☐ 12" x 7584" ☐ 12" x 7608" ☐ 12" x 7632" ☐ 12" x 7656" ☐ 12" x 7680" ☐ 12" x 7704" ☐ 12" x 7728" ☐ 12" x 7752" ☐ 12" x 7776" ☐ 12" x 7800" ☐ 12" x 7824" ☐ 12" x 7848" ☐ 12" x 7872" ☐ 12" x 7896" ☐ 12" x 7920" ☐ 12" x 7944" ☐ 12" x 7968" ☐ 12" x 7992" ☐ 12" x 8016" ☐ 12" x 8040" ☐ 12" x 8064" ☐ 12" x 8088" ☐ 12" x 8112" ☐ 12" x 8136" ☐ 12" x 8160" ☐ 12" x 8184" ☐ 12" x 8208" ☐ 12" x 8232" ☐ 12" x 8256" ☐ 12" x 8280" ☐ 12" x 8304" ☐ 12" x 8328" ☐ 12" x 8352" ☐ 12" x 8376" ☐ 12" x 8400" ☐ 12" x 8424" ☐ 12" x 8448" ☐ 12" x 8472" ☐ 12" x 8496" ☐ 12" x 8520" ☐ 12" x 8544" ☐ 12" x 8568" ☐ 12" x 8592" ☐ 12" x 8616" ☐ 12" x 8640" ☐ 12" x 8664" ☐ 12" x 8688" ☐ 12" x 8712" ☐ 12" x 8736" ☐ 12" x 8760" ☐ 12" x 8784" ☐ 12" x 8808" ☐ 12" x 8832" ☐ 12" x 8856" ☐ 12" x 8880" ☐ 12" x 8904" ☐ 12" x 8928" ☐ 12" x 8952" ☐ 12" x 8976" ☐ 12" x 9000" ☐ 12" x 9024" ☐ 12" x 9048" ☐ 12" x 9072" ☐ 12" x 9096" ☐ 12" x 9120" ☐ 12" x 9144" ☐ 12" x 9168" ☐ 12" x 9192" ☐ 12" x 9216" ☐ 12" x 9240" ☐ 12" x 9264" ☐ 12" x 9288" ☐ 12" x 9312" ☐ 12" x 9336" ☐ 12" x 9360" ☐ 12" x 9384" ☐ 12" x 9408" ☐ 12" x 9432" ☐ 12" x 9456" ☐ 12" x 9480" ☐ 12" x 9504" ☐ 12" x 9528" ☐ 12" x 9552" ☐ 12" x 9576" ☐ 12" x 9600" ☐ 12" x 9624" ☐ 12" x 9648" ☐ 12" x 9672" ☐ 12" x 9696" ☐ 12" x 9720" ☐ 12" x 9744" ☐ 12" x 9768" ☐ 12" x 9792" ☐ 12" x 9816" ☐ 12" x 9840" ☐ 12" x 9864" ☐ 12" x 9888" ☐ 12" x 9912" ☐ 12" x 9936" ☐ 12" x 9960" ☐ 12" x 9984" ☐ 12" x 10000" ☐ 12" x 10024" ☐ 12" x 10048" ☐ 12" x 10072" ☐ 12" x 10096" ☐ 12" x 10120" ☐ 12" x 10144" ☐ 12" x 10168" ☐ 12" x 10192" ☐ 12" x 10216" ☐ 12" x 10240" ☐ 12" x 10264" ☐ 12" x 10288" ☐ 12" x 10312" ☐ 12" x 10336" ☐ 12" x 10360" ☐ 12" x 10384" ☐ 12" x 10408" ☐ 12" x 10432" ☐ 12" x 10456" ☐ 12" x 10480" ☐ 12" x 10504" ☐ 12" x 10528" ☐ 12" x 10552" ☐ 12" x 10576" ☐ 12" x 10600" ☐ 12" x 10624" ☐ 12" x 10648" ☐ 12" x 10672" ☐ 12" x 10696" ☐ 12" x 10720" ☐ 12" x 10744" ☐ 12" x 10768" ☐ 12" x 10792" ☐ 12" x 10816" ☐ 12" x 10840" ☐ 12" x 10864" ☐ 12" x 10888" ☐ 12" x 10912" ☐ 12" x 10936" ☐ 12" x 10960" ☐ 12" x 10984" ☐ 12" x 11000" ☐ 12" x 11024" ☐ 12" x 11048" ☐ 12" x 11072" ☐ 12" x 11096" ☐ 12" x 11120" ☐ 12" x 11144" ☐ 12" x 11168" ☐ 12" x 11192" ☐ 12" x 11216" ☐ 12" x 11240" ☐ 12" x 11264" ☐ 12" x 11288" ☐ 12" x 11312" ☐ 12" x 11336" ☐ 12" x 11360" ☐ 12" x 11384" ☐ 12" x 11408" ☐ 12" x 11432" ☐ 12" x 11456" ☐ 12" x 11480" ☐ 12" x 11504" ☐ 12" x 11528" ☐ 12" x 11552" ☐ 12" x 11576" ☐ 12" x 11600" ☐ 12" x 11624" ☐ 12" x 11648" ☐ 12" x 11672" ☐ 12" x 11696" ☐ 12" x 11720" ☐ 12" x 11744" ☐ 12" x 11768" ☐ 12" x 11792" ☐ 12" x 11816" ☐ 12" x 11840" ☐ 12" x 11864" ☐ 12" x 11888" ☐ 12" x 11912" ☐ 12" x 11936" ☐ 12" x 11960" ☐ 12" x 11984" ☐ 12" x 12000" ☐ 12" x 12024" ☐ 12" x 12048" ☐ 12" x 12072" ☐ 12" x 12096" ☐ 12" x 12120" ☐ 12" x 12144" ☐ 12" x 12168" ☐ 12" x 12192" ☐ 12" x 12216" ☐ 12" x 12240" ☐ 12" x 12264" ☐ 12" x 12288" ☐ 12" x 12312" ☐ 12" x 12336" ☐ 12" x 12360" ☐ 12" x 12384" ☐ 12" x 12408" ☐ 12" x 12432" ☐ 12" x 12456" ☐ 12" x 12480" ☐ 12" x 12504" ☐ 12" x 12528" ☐ 12" x 12552" ☐ 12" x 12576" ☐ 12" x 12600" ☐ 12" x 12624" ☐ 12" x 12648" ☐ 12" x 12672" ☐ 12" x 12696" ☐ 12" x 12720" ☐ 12" x 12744" ☐ 12" x 12768" ☐ 12" x 12792" ☐ 12" x 12816" ☐ 12" x 12840" ☐ 12" x 12864" ☐ 12" x 12888" ☐ 12" x 12912" ☐ 12" x 12936" ☐ 12" x 12960" ☐ 12" x 12984" ☐ 12" x 13000" ☐ 12" x 13024" ☐ 12" x 13048" ☐ 12" x 13072" ☐ 12" x 13096" ☐ 12" x 13120" ☐ 12" x 13144" ☐ 12" x 13168" ☐ 12" x 13192" ☐ 12" x 13216" ☐ 12" x 13240" ☐ 12" x 13264" ☐ 12" x 13288" ☐ 12" x 13312" ☐ 12" x 13336" ☐ 12" x 13360" ☐ 12" x 13384" ☐ 12" x 13408" ☐ 12" x 13432" ☐ 12" x 13456" ☐ 12" x 13480" ☐ 12" x 13504" ☐ 12" x 13528" ☐ 12" x 13552" ☐ 12" x 13576" ☐ 12" x 13600" ☐ 12" x 13624" ☐ 12" x 13648" ☐ 12" x 13672" ☐ 12" x 13696" ☐ 12" x 13720" ☐ 12" x 13744" ☐ 12" x 13768" ☐ 12" x 13792" ☐ 12" x 13816" ☐ 12" x 13840" ☐ 12" x 13864" ☐ 12" x 13888" ☐ 12" x 13912" ☐ 12" x 13936" ☐ 12" x 13960" ☐ 12" x 13984" ☐ 12" x 14000" ☐ 12" x 14024" ☐ 12" x 14048" ☐ 12" x 14072" ☐ 12" x 14096" ☐ 12" x 14120" ☐ 12" x 14144" ☐ 12" x 14168" ☐ 12" x 14192" ☐ 12" x 14216" ☐ 12" x 14240" ☐ 12" x 14264" ☐ 12" x 14288" ☐ 12" x 14312" ☐ 12" x 14336" ☐ 12" x 14360" ☐ 12" x 14384" ☐ 12" x 14408" ☐ 12" x 14432" ☐ 12" x 14456" ☐ 12" x 14480" ☐ 12" x 14504" ☐ 12" x 14528" ☐ 12" x 14552" ☐ 12" x 14576" ☐ 12" x 14600" ☐ 12" x 14624" ☐ 12" x 14648" ☐ 12" x 14672" ☐ 12" x 14696" ☐ 12" x 14720" ☐ 12" x 14744" ☐ 12" x 14768" ☐ 12" x 14792" ☐ 12" x 14816" ☐ 12" x 14840" ☐ 12" x 14864" ☐ 12" x 14888" ☐ 12" x 14912" ☐ 12" x 14936" ☐ 12" x 14960" ☐ 12" x 14984" ☐ 12" x 15000" ☐ 12" x 15024" ☐ 12" x 15048" ☐ 12" x 15072" ☐ 12" x 15096" ☐ 12" x 15120" ☐ 12" x 15144" ☐ 12" x 15168" ☐ 12" x 15192" ☐ 12" x 15216" ☐ 12" x 15240" ☐ 12" x 15264



[Visit Our Website to Explore](#)

R-TEC AUTOMATION® Education Library

Gain the competitive edge through R-TEC Automation® education and training.

