

## Fabricating Arched Top Panels & Panels with Unique Double Smocked Pleated Headers

Dress up your arches with style! The lavish fabrics and rich finishes featured in our Hollywood Regency Roomscape express the collaboration between fabric artisan and hardware artisan blending two exquisitely designed window treatments with two custom crafted decorative hardware styles.



### Materials & Supplies

#### Rowley Products

	Item #
Pattern Making Paper	<a href="#">DYC18/20</a>
16' Center Point Tape Measure	<a href="#">DT85</a>
Flexi Tape Measure	<a href="#">DT16</a>
Glass Head Straight Pins	<a href="#">TP49</a>
R-TEX Sew-On Shirring Loop Tape - 4" Pencil Pleat Loop	<a href="#">ST78</a>
R-TEX Double Smocking Tape	<a href="#">STW40</a>
Pinsetter	<a href="#">PS10/D</a>
Hex Head Painted Screws	<a href="#">HH675/</a>
Drill-In Fasteners	<a href="#">PL</a>
Kwik Release Chuck Adapter	<a href="#">SK40</a>
Plastic Shoe Cover	<a href="#">DT39</a>
Heavy Duty Commercial Steamer	<a href="#">DS20</a>

## Fabricating Arched Top Panels & Panels with Unique Double Smocked Pleated Headers: Step-By-Step Instructions

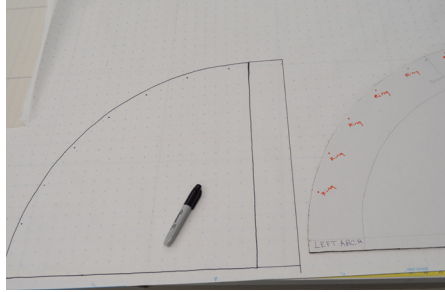
Follow along with our expert fabricator, Donna Cash, as she provides detailed instructions on how to fabricate elegant sheer panels for a custom arched rod designed by The Finial Company™ and complementary drapery panels with unique pleated headers.

### Arched Top Panels with Pencil Pleated Header:

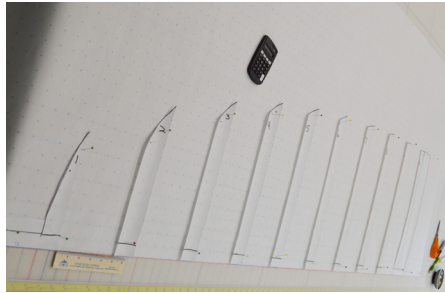
Start out with the template of the window size and shape. Be sure you are working with the face of the template.



- 1 Trace the template on to pattern making paper (only half of the template was needed for this). On the graph paper, add the hem allowance (3") for the lead edge side hem.

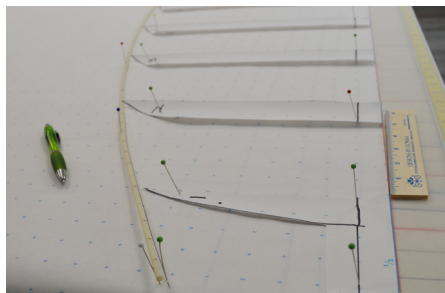


- 2 Cut out the graph paper into even spaces. Spread the sections out on another piece of graph paper.
  - A. The finished width of the sections will equal the finished width of the fabric for the panels.  
**Ex:** For a 20" finished panel width at 3X fullness, spread the sections to 60".
  - B. On the pattern paper, add in the side hem for the outer side of the panel.

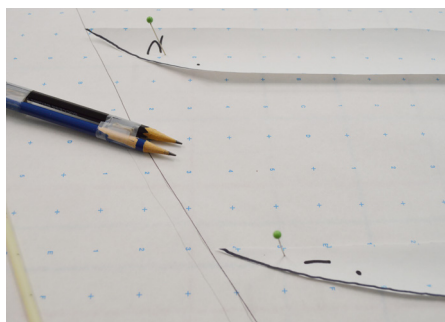


- 3 To complete the cut size template, connect the sections. We used a round shade rib to help connect the tops of the sections easily.

- 4 Follow the rib to draw a line on pattern paper.



- 5 Cut out the pattern paper. Add a 1/2" Seam Allowance (SA) to the top of the pattern paper.



6 Transfer the markings for the ring placement to the pattern paper. This will help in pinning the panel once completed.

7 Cut the fabric for the panels the entire Finished Length (FL).

8 Put the bottom hem in the fabric. We used beaded weight chain and put in a rolled hem.

Watch this video for a closer explanation of how to sew a rolled hem in sheer panels:

[Learn to Sew a Rolled Hem in Sheer Panels](#)



9 Place the fabric on the table, wrong side up. Press the side hems and pin. Close the side hems using your method of choice, leaving the top 5" open.



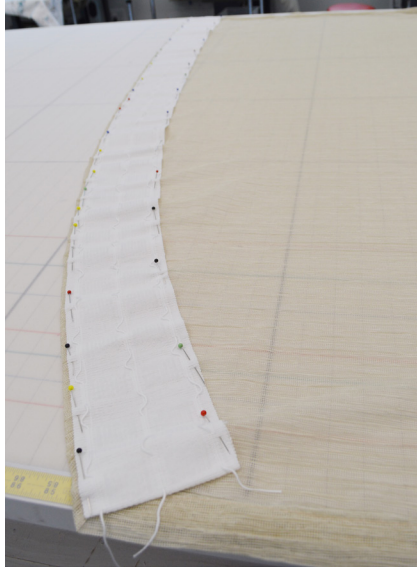
10 Place the template on the wrong side of the fabric and cut the fabric.

- A. The template is placed on the fabric matching the correct finished length for the lead edge and return edge. Make sure you are cutting one **PAIR**, not two single panels with the same arch.



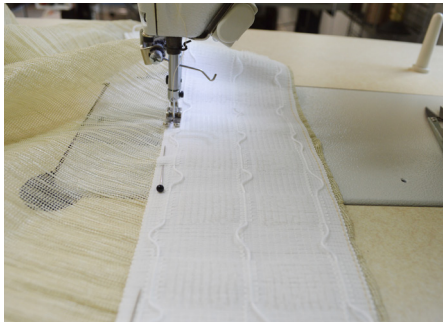
11 At the top of the fabric, press the 1/2" SA towards the back of the panel.

12 Pin the pencil pleat tape on the back side of the panel, about 1/8" below the top.

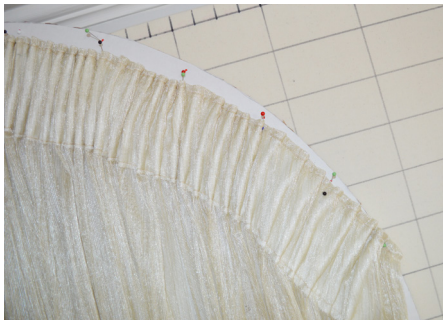


13 Fold the top 5" of the side hems over the tape and pin.

14 Sew the pleating tape to the panel along the top and bottom edges of the tape.



15 Gather the tape to fit the arch template.



16

Place drapery pins in the back of the panel in the ring placement.



## Panels with Unique Double Smocked Pleated Header:

1

Cut, seam and hem lining.

2

Cut, seam and seam Face Fabric (FF).



- 3 Table panels. Place lining on FF, wrong sides together, matching bottom hems.



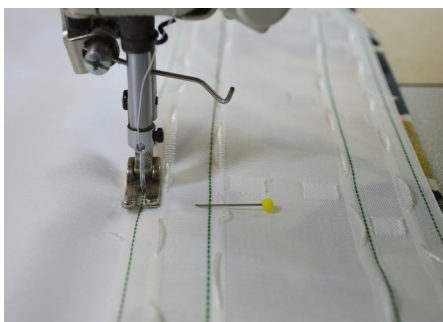
- 4 Press top of panel at Finished Length (FL).



- 5 Pin the double smocking tape to the header of the panel, on the lining side. Press and close side hems.



- 6 Stitch the smocking tape at each green line. Be sure to not stitch the gathering cord.



7 Secure one side of the strings by knotting together. Clamp to the table.

8 On the second side of the panel, pull the cords to form the smocking pleats.



9 Secure the threads on the second side of the panel after gathering to the Finished Width (FW).



10 Mark the back of the panel and insert drapery pins.



