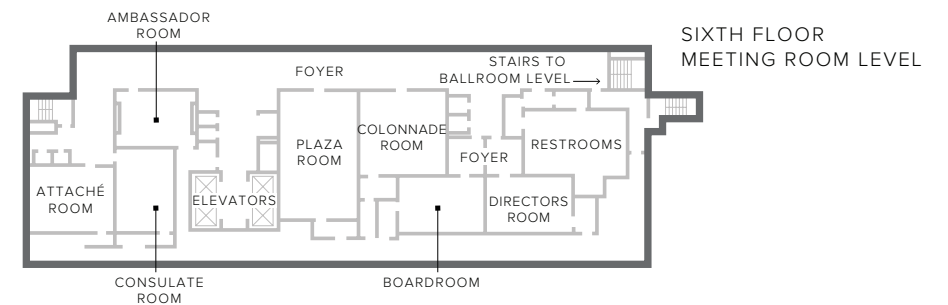
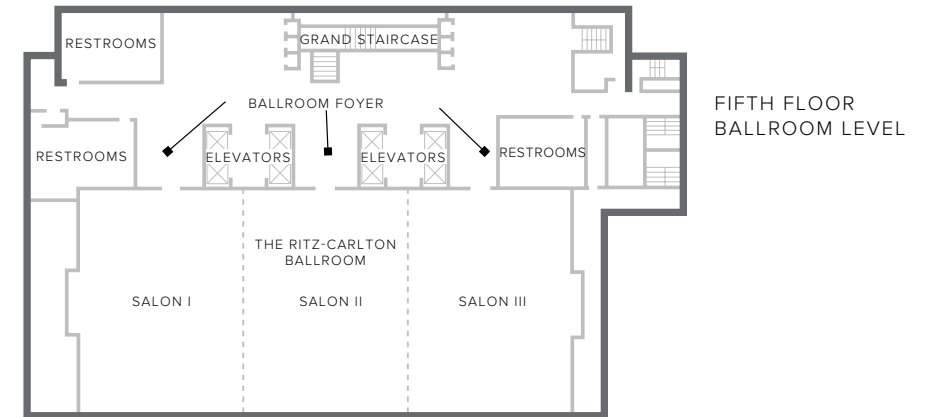


EVENT SPACE

*Elegant experiences,
effortlessly executed*

At The Ritz-Carlton, Tysons Corner, our collection of meeting rooms balances your need for elegance and impact with the need for comfort and flexibility. Intimate boardrooms, elegantly appointed salons, and foyer and pre-function spaces can host your entire event, from the welcome reception and breakout sessions to the keynote speaker and post-meeting cocktails. Our largest, most impressive venue, The Ritz-Carlton Ballroom, is the largest in Northern Virginia and can accommodate up to 1,350 guests.



THE RITZ-CARLTON
TYSONS CORNER

1700 TYSONS BOULEVARD, MCLEAN, VA 22102 USA
PH +1.703.506.4300 RITZCARLTON.COM/TYSONSCORNER

EVENT SPACE



INSPIRING SETTINGS

Whether a conference, product launch, board meeting or gala, The Ritz-Carlton, Tysons Corner will deliver an unforgettable experience for your clients and guests.

- Three floors of meeting rooms, including boardrooms
- The largest luxury ballroom in Northern Virginia at 14,000 square feet
- Our professional Event Design Studio to assist in planning your meeting
- An innovative catering team creating exemplary, multi-course meals
- A “day-of” Conference Concierge to ensure smooth execution of your event
- State-of-the-art audiovisual equipment and expertise
- Entyse Bistro and Entyse Espresso Bar
- Personal pre- and post-event conferences
- 398 luxury hotel rooms and suites with sweeping views

EVENT SPACE	SQ. FT.	DIMENSIONS	CEILING HEIGHT	BANQUET	RECEPTION	CONFERENCE	CLASSROOM	U-SHAPE	THEATER	HOLLOW SQUARE
FOURTH FLOOR										
Commonwealth Boardroom	338	13 x 25	10	—	—	14	—	—	—	—
Old Dominion Room	2,422	—	10	100	130	34	54	42	150	45
Entyse	2,564	66 x 39	14	—	125	—	—	—	—	—
Entyse Bar	398	27 x 15	12	—	—	14	—	—	—	—
Peachgrove Ballroom	2,816	64 x 44	12	200	340	90	111	63	232	72
Salon A	748	17 x 44	12	50	90	60	48	33	88	36
Salon B	1,100	25 x 44	12	80	130	60	48	34	106	38
Salon C	1,012	23 x 44	12	70	120	60	41	33	104	36
Salon AB	1,848	42 x 44	12	140	220	60	78	36	152	42
Salon AC	2,112	48 x 44	12	160	220	60	78	48	180	54
Foyer	1,344	64 x 21	12	—	85	—	—	—	—	—
FIFTH FLOOR										
The Ritz-Carlton Ballroom	14,003	171 x 78	15	1,050	1,350	—	900	—	1,300	—
Salon I	4,721	61 x 78	15	350	450	68	234	81	416	102
Salon II	4,561	57 x 78	15	350	450	68	234	81	416	102
Salon III	4,721	61 x 78	15	350	450	68	234	81	416	102
Foyer	6,852	—	—	—	—	—	—	—	—	—
SIXTH FLOOR										
Directors Room	476	28 x 17	10	—	—	15	—	—	—	—
Boardroom	476	28 x 17	10	—	—	15	—	—	—	—
Colonnade Room	700	25 x 28	10	40	65	20	42	24	70	30
Plaza Room	1,008	24 x 42	10	80	120	32	72	39	120	42
Ambassador Room	432	18 x 24	10	20	35	18	24	18	48	21
Consulate Room	560	20 x 28	10	30	56	20	30	24	56	24
Attaché Room	528	22 x 25	10	30	48	20	33	21	52	24
Foyer	1,584	—	—	—	—	—	—	—	—	—



THE RITZ-CARLTON

TYSONS CORNER

1700 TYSONS BOULEVARD, MCLEAN, VA 22102 USA
PH +1.703.506.4300 RITZCARLTON.COM/TYSONSCORNER

Convenient access to both the nation's capital and the Virginia countryside for offsite excursions