



THE RITZ - CARLTON

SINGAPORE





# ARRIVE

*Experience the beauty of Singapore*

At The Ritz-Carlton, Millenia Singapore, immerse yourself in a canvas of views comprising the hotel's renowned architecture, museum-quality art collection, and downtown location in iconic Marina Bay. From the mother-of-pearl ceiling which floods the lobby with natural daylight, to the spectacular hanging "Cornucopia" sculpture by Frank Stella, lush landscaped gardens and unparalleled views from our guest rooms, we seek to enliven your senses from the moment you arrive.





# RELAX

*Embrace the art of luxury  
and rejuvenation*

- 608 guest rooms with unrivalled views of Marina Bay, or the Singapore Flyer and Kallang River precinct
- The largest entry-level hotel room in Singapore at 51 square metres / 549 square feet
- Flush wall-mounted LED IPTV and DVD player, with access to Netflix and YouTube
- Complimentary high speed Internet connectivity with a bandwidth of 1 Gbps
- Nespresso coffee machine
- The World's Sexiest Bathrooms featuring iconic octagonal windows
- The first La Mer hotel partner spa in Asia Pacific
- Outdoor swimming pool flanked by sun loungers, private cabanas, a pool bar and an outdoor grill
- 24 hour gym with state-of-the-art cardiovascular and weight training equipment, High Intensity Interval Training (HIIT) and TRX Suspension Training
- Access to the hotel's 4,200-piece contemporary art collection which includes key works by Frank Stella, Andy Warhol and Dale Chihuly, as well as experience the world's only augmented reality hotel art tour





## *Indulge in residential hotel living*

- Upscale penthouse located on Level 32 that is 218 square metres / 2,347 square feet
- Ideal for hosting boardroom meetings, intimate dinners, product launches and cocktail parties
- 24-hour personalised butler service
- **Living Room**
  - Fitted with custom made furniture, a 65-inch LED IPTV with access to Netflix and YouTube, Sonos sound system, and a wall-flushed bar stocked with liquor and spirits
- **Dining Room**
  - Accentuated by a resplendent crystal chandelier, the custom-built dining table can accommodate a party of 10 guests
  - Can be converted into a boardroom complete with a built-in projector screen, and complimentary high-speed wireless Internet access
- **Pantry**
  - Fitted with Miele kitchen appliances such as a fridge, Nespresso coffee machine, oven, microwave and a wine fridge stocked with preferred wines
- **Entertainment Room**
  - Comprises a 84-inch LED IPTV with access to Netflix and YouTube, Sonos sound system, customisable game consoles, a plush sofa and leather recliner
  - Can be transformed into a king or twin guest bedroom
- **Master Bedroom**
  - Features a walk-in closet, plush feather bed and custom bed linens which enhance the Ritz-Carlton sleep experience
  - Extensive marble bathroom outfitted with double-sinks, a leather ottoman, an automated bidet, a separate shower stall / steam room and a two-metre long Jacuzzi bath





# ENJOY

## *Unwind with captivating views*

The Ritz-Carlton Club Level elevates the luxury hotel experience combining intimacy, comfort and bespoke hospitality. This exclusive space provides the ideal setting to conduct business in The Library, with multiple culinary offerings throughout the day.

### Club privileges include:

- Personalised arrival and departure service with check-in/out in your room or at the Club Lounge
- Culinary indulgences at the Club Lounge;
  - Breakfast: 6.30 a.m. to 10.30 a.m.<sup>^</sup>
  - Midday Snacks: 11.30 a.m. to 2 p.m.
  - Afternoon Tea: 2.30 p.m. to 4.30 p.m.
  - Hors d'oeuvres and Cocktails: 5 p.m. to 8 p.m.
  - Desserts and Cordials: 8.30 p.m. to 10.30 p.m.
- Unlimited pours of Champagne and house pour wines by the glass
- Two pieces of complimentary garment pressing or steaming services daily
- Complimentary coffee or tea served direct to your room upon request at any time of the day
- Complimentary limousine service within the Marina Bay precinct between 7 a.m. to 10 p.m. daily (*subject to availability*)
- Exclusive use of The Library for meetings of up to 10 attendees (*additional charges apply*)

<sup>^</sup> Available until 11 a.m. on Saturdays, Sundays and public holidays





# GATHER

*Create lasting and meaningful memories*

Every event – from the most intimate of private gatherings to the grandest of corporate celebrations – leaves a lasting impression on every guest. With more than 50,000 square feet of indoor and outdoor meeting and events space, along with expert attention to every detail by a team of dedicated catering and event managers, be assured that your event will be executed with flair, from beginning to end.



## *Meeting Venues*

- 4,651 square meters / 50,000 square feet of meetings and events space
- 13 meeting rooms which can accommodate between 10 to 1,000 persons;
  - The light-filled Junior Ballroom on Level Three
  - 8 Commonwealth Meeting Rooms on Level Two
  - 1,090 square meters / 11,730 square feet pillar-less and light-filled Grand Ballroom on Level One that can accommodate up to 1,000 persons. Features 3 state-of-the-art LED video walls, which form the largest panoramic video wall in a hotel ballroom in Singapore, intelligent lighting and a concert quality sound system
- The outdoor swimming pool can be transformed into a dynamic lifestyle events arena
- 6 private dining rooms including the versatile Garden Suite in Summer Pavilion (Level Three) are ideal for social celebrations or business meetings

## *Meeting Amenities*

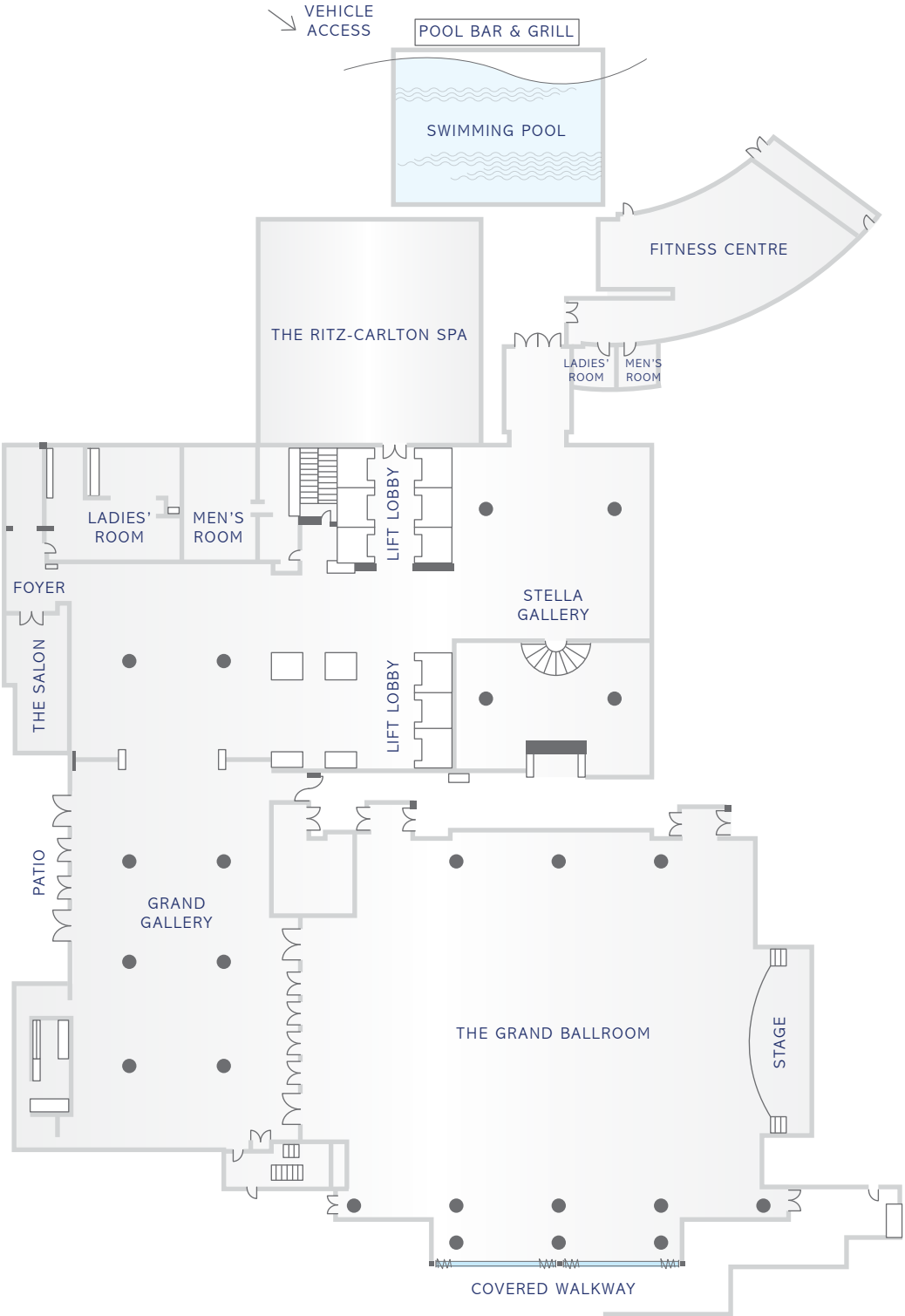
- Complimentary high speed Internet connectivity with a bandwidth of 1Gbps
- Portable Samsung Flip with a 55-inch display for dynamic and versatile interactive presentations
- State-of-the-art audio-visual and lighting equipment
- Team of dedicated meeting professionals
- Experienced event managers
- Personalised meeting packages
- Offsite catering services on a yacht, or at popular venues such as Gardens by the Bay, and Capitol Theatre



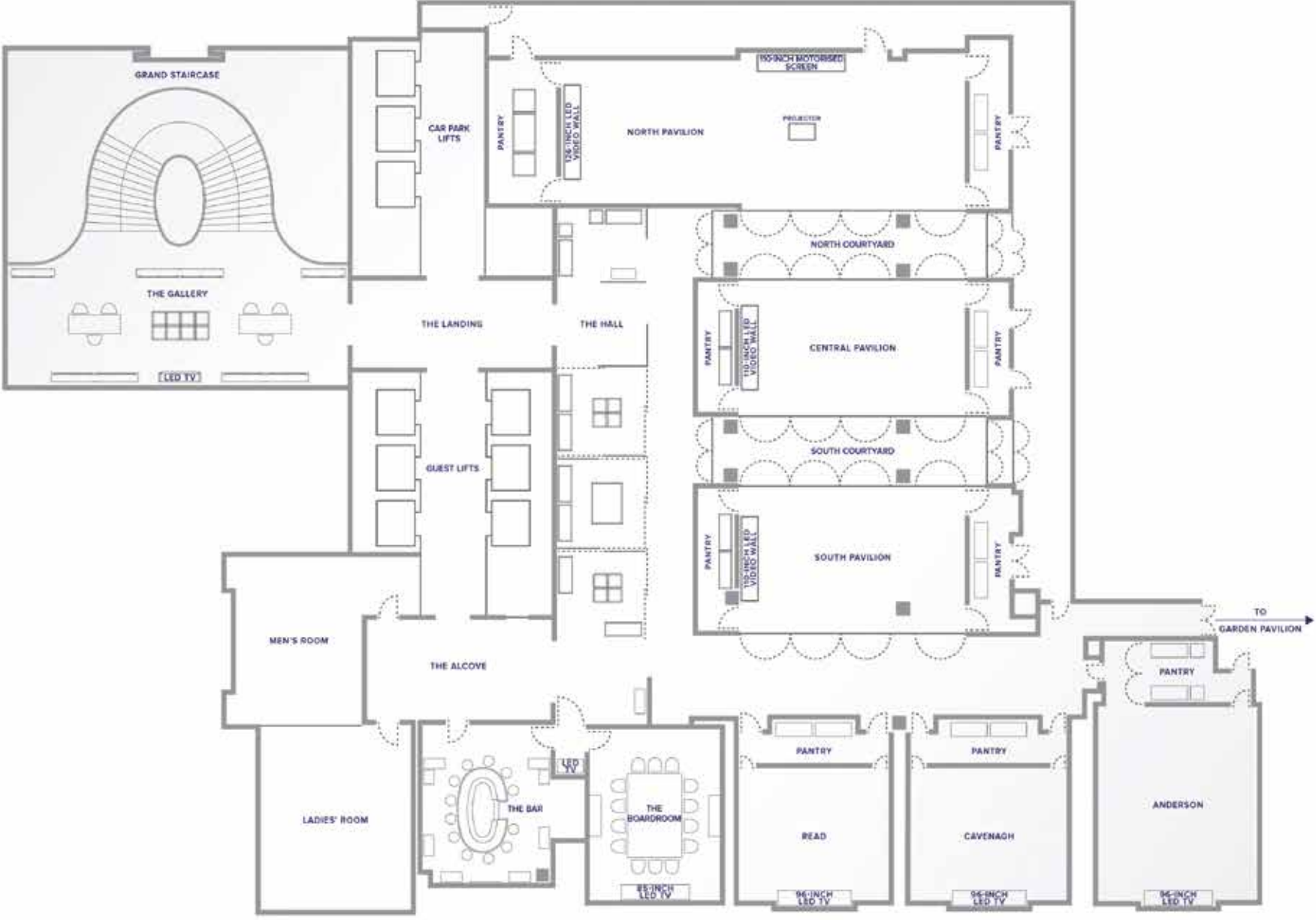
Capacity Chart

| Area                          | Square meters | Square feet | Dimensions in feet | Dimensions in meters | Ceiling Height (m) | Ceiling Height (ft) | Rounds of 10 (5 ft)                | Rounds of 10 (6 ft) | Theater | Cocktail Reception | Conference | Classroom | U-Shaped | Hollow Square |
|-------------------------------|---------------|-------------|--------------------|----------------------|--------------------|---------------------|------------------------------------|---------------------|---------|--------------------|------------|-----------|----------|---------------|
| Level 1                       |               |             |                    |                      |                    |                     |                                    |                     |         |                    |            |           |          |               |
| Grand Ballroom                | 1085          | 11730       | 115 x 102          | 35 x 31              | 5                  | 16.5                | 1000                               | 740                 | 1400    | 1200               | 0          | 720       | 90       | 132           |
| Grand Gallery A               | 505           | 5457        | 107 x 51           | 32.4 x 15.6          | 3.3                | 11                  | 260                                | 200                 | 220     | 500                | 54         | 126       | 51       | -             |
| Grand Gallery B               | 360           | 3960        | 79.2 x 50          | 24 x 50              | 2.5                | 8.5                 | 160                                | 140                 | -       | 500                | -          | -         | -        | -             |
| Salon                         | 36            | 403         | 31 x 13            | 9 x 4                | 2                  | 7                   | 20                                 | 20                  | 42      | 25                 | 22         | 15        | 21       | -             |
| Stella Gallery                | 234           | 2517        | 46.1 x 54.6        | 14.1 x 16.6          | 4.8                | 16                  | 120                                | 100                 | -       | 100                | -          | -         | -        | -             |
| Outdoor Swimming Pool         | -             | -           | -                  | -                    | -                  | -                   | 200                                | -                   | -       | 1000               | -          | -         | -        | -             |
| Level 2 - The Commonwealth    |               |             |                    |                      |                    |                     |                                    |                     |         |                    |            |           |          |               |
| North Pavilion                | 137.0         | 1475.4      | 64.1 x 23.0        | 19.5 x 7.0           | 2.4                | 8                   | 100                                | 80                  | 140     | 150                | 48         | 78        | 48       | 54            |
| Central Pavilion              | 72.2          | 777.9       | 36.1 x 21.5        | 11.0 x 6.5           | 2.4                | 8                   | 40                                 | 50                  | 70      | 100                | 24         | 39        | 24       | 30            |
| South Pavilion                | 77.5          | 834.6       | 36.1 x 23.1        | 11.0 x 7.0           | 2.4                | 8                   | 40                                 | 40                  | 55      | 100                | 20         | 39        | 18       | 28            |
| Anderson                      | 72.7          | 783.0       | 31.0 x 25.2        | 9.4 x 7.7            | 2.4                | 8                   | 50                                 | 50                  | 60      | 80                 | 24         | 36        | 24       | 30            |
| Cavenagh                      | 49.8          | 536.3       | 21.0 x 25.5        | 6.4 x 7.7            | 2.4                | 8                   | 20                                 | 30                  | 40      | 50                 | 18         | 18        | 12       | 18            |
| Read                          | 46.9          | 505.6       | 21.0 x 24.0        | 6.4 x 7.3            | 2.4                | 8                   | 20                                 | 30                  | 40      | 50                 | 18         | 18        | 12       | 18            |
| The Boardroom                 | 53.5          | 575.8       | 27.4 x 21.0        | 8.0 x 6.3            | 2.7                | 9                   | Total Seating Capacity: 14 persons |                     |         |                    |            |           |          |               |
| The Bar                       | 44.6          | 574.4       | 24.0 x 21.0        | 7.0 x 6.4            | 2.7                | 9                   | Total Seating Capacity: 12 persons |                     |         |                    |            |           |          |               |
| Level 3                       |               |             |                    |                      |                    |                     |                                    |                     |         |                    |            |           |          |               |
| Junior Ballroom               | 216           | 2325        | 44.3 x 52.5        | 13.5 x 16            | 4.8                | 15.8                | 140                                | 120                 | 234     | 150                | 39         | 127       | 45       | 39            |
| Junior Ballroom 1             | 108           | 1163        | 44.3 x 26.3        | 13.5 x 8             | 4.8                | 15.8                | 60                                 | 50                  | 120     | 100                | 36         | 60        | 36       | 36            |
| Junior Ballroom 2             | 108           | 1163        | 44.3 x 26.3        | 13.5 x 8             | 4.8                | 15.8                | 60                                 | 50                  | 120     | 100                | 36         | 60        | 36       | 36            |
| Garden Suite, Summer Pavilion | 61            | 659         | 33.5 x 19.7        | 10.2 x 6             | 3.5                | 11.5                | 30                                 | -                   | 80      | -                  | 25         | 30        | 30       | -             |

LEVEL ONE  
FLOOR PLAN

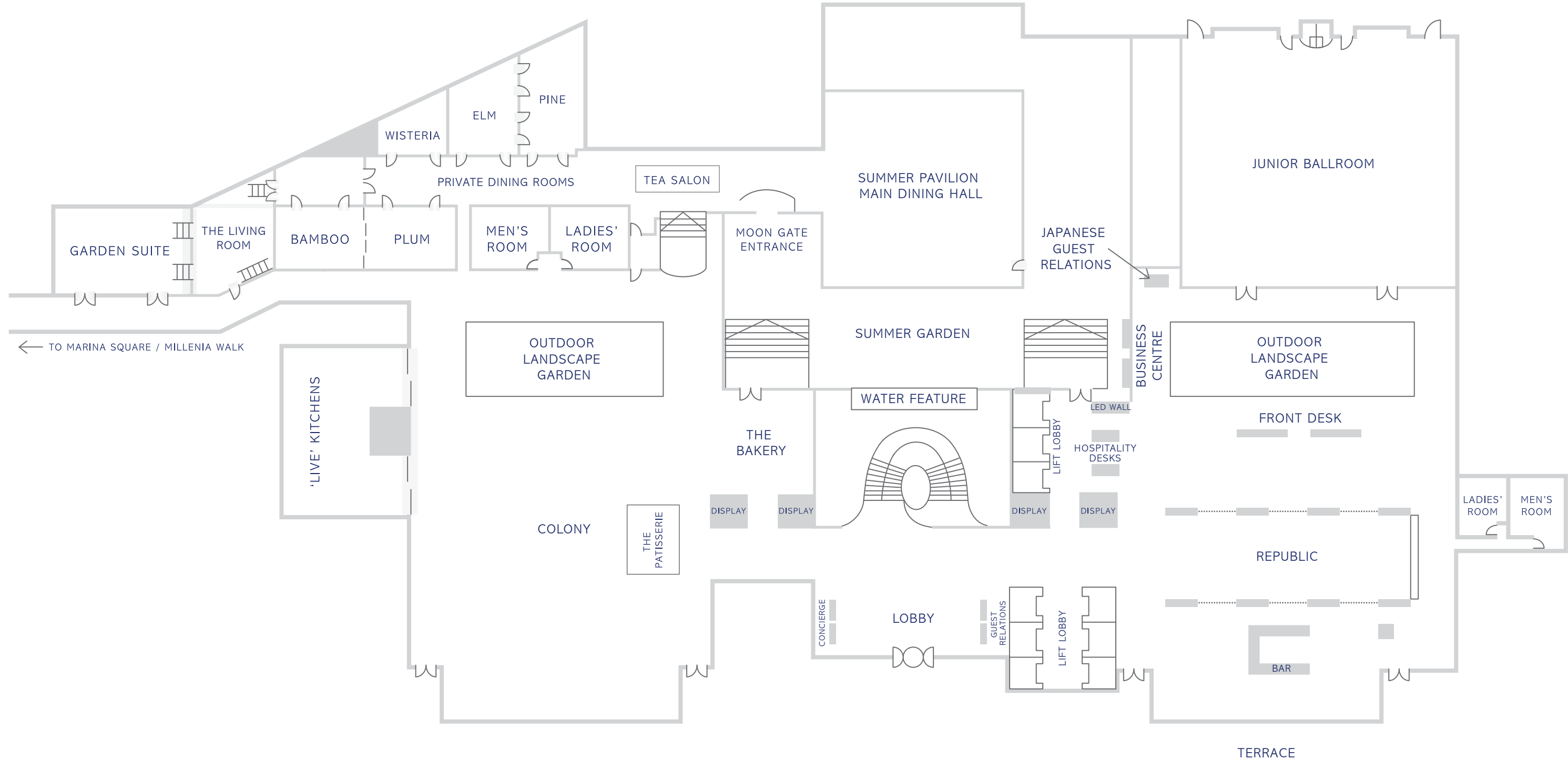


LEVEL TWO  
FLOOR PLAN

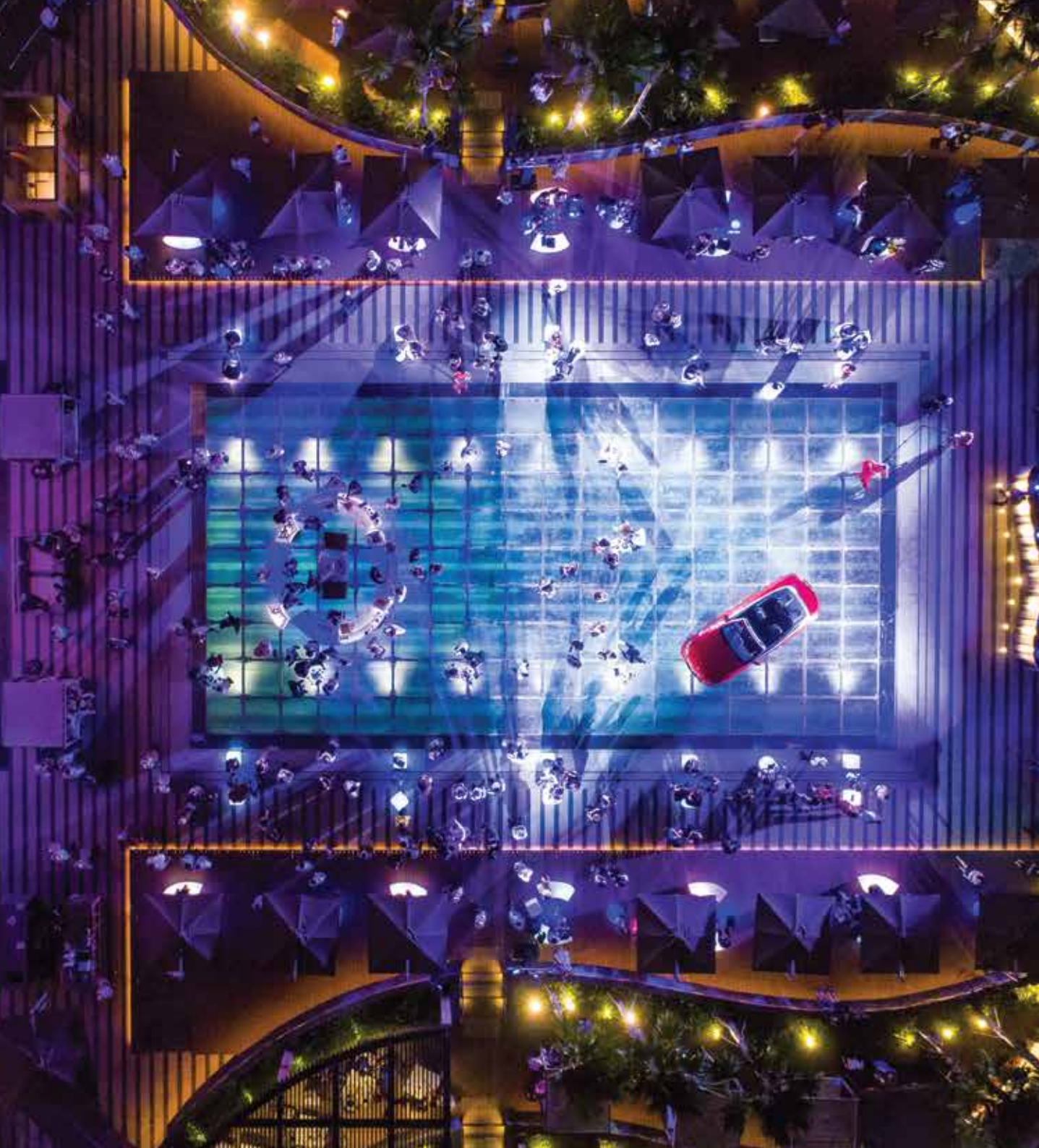




LEVEL THREE  
FLOOR PLAN







# LIFESTYLE EVENTS

## *Reimagine lifestyle parties*

Surrounded by lush greenery, the outdoor swimming pool located on Level One boasts a three-tiered timber pool deck flanked by sun loungers, private cabanas, a pool bar and an outdoor grill.

With a transparent overwater pool cover that adds over 15,000 square feet of outdoor events space, the pool area can be transformed into a dynamic events arena to host overwater fashion shows, product launches, cocktail parties, wedding solemnisations, and seated dinners.

### Overwater Pool Cover

- Made of Plexiglas, also known as acrylic glass which can be custom-built to take on various shapes
- Extremely durable, the transparent Plexiglas table-tops can support weights of up to 800 kilograms per cube





# ESCAPE

## The Ritz-Carlton Spa *Immerse in a timeless journey*

Designed to enliven the senses through evoking the true essence of the ocean and its healing benefits, The Ritz-Carlton Spa offers exclusive La Mer facials and signature massages.

- 10 treatment rooms including The Ritz-Carlton Spa Suite, complete with a romantic long bath and hydro-jets experience
- Signature spa experiences include Cello Concerto and ESPA Indulgence. Unique to The Ritz-Carlton Spa, the Cello Concerto is a body massage that is harmoniously synchronised with 'live' melodies played by a cellist
- The spa menu includes a curated selection of massages and even a Men's La Mer Custom Facial targeted at gentlemen
- Le Salon Rose, which can be booked exclusively, offers bespoke manicures and pedicures. Perfect for spa-rties



## The Ritz-Carlton Gym *Fulfill your fitness aspirations*

- One of the largest hotel gyms featuring a comprehensive range of state-of-the-art fitness equipment
- High Intensity Interval Training (HIIT), TRX Suspension Training, cardiovascular endurance and weight training are available
- The Movement Studio is equipped with boxing gear, resistance bands and medicine balls to add variation to any workout





# SAVOUR

*Indulge in an exquisite  
culinary voyage*

Dining adventures mirror the city's kaleidoscope of international influences and indigenous cultures. Our two signature restaurants, Colony and Summer Pavilion, offer their own unique interpretation of the culinary experience – from the best of local heritage cuisines to Michelin Star dining – transforming every meal into an unforgettable journey.



Located in the East Wing of the hotel, Republic showcases an extensive cocktail menu devoted to a narrative of historical anecdotes originating from Singapore, the United Kingdom, the United States of America and Italy. Enjoy the stories while you imbibe on liquid history.





# OUTDOOR CATERING

## *Catering to refined tastes*

Whether you desire an intimate al fresco party in the lush gardens of your residence or a more refined ambience at an iconic offsite location such as Gardens by the Bay, our catering specialists will deliver an event that will exceed every expectation.

To create an occasion that perfectly expresses how important your guests are to you, and to us, our culinary team is adept at customising menus to pander to all palates. Butler service, audio-visual support, bathroom amenities and valet services can be provided to ensure your event runs seamlessly.



*Image Credit: Singapore Tourism Board*

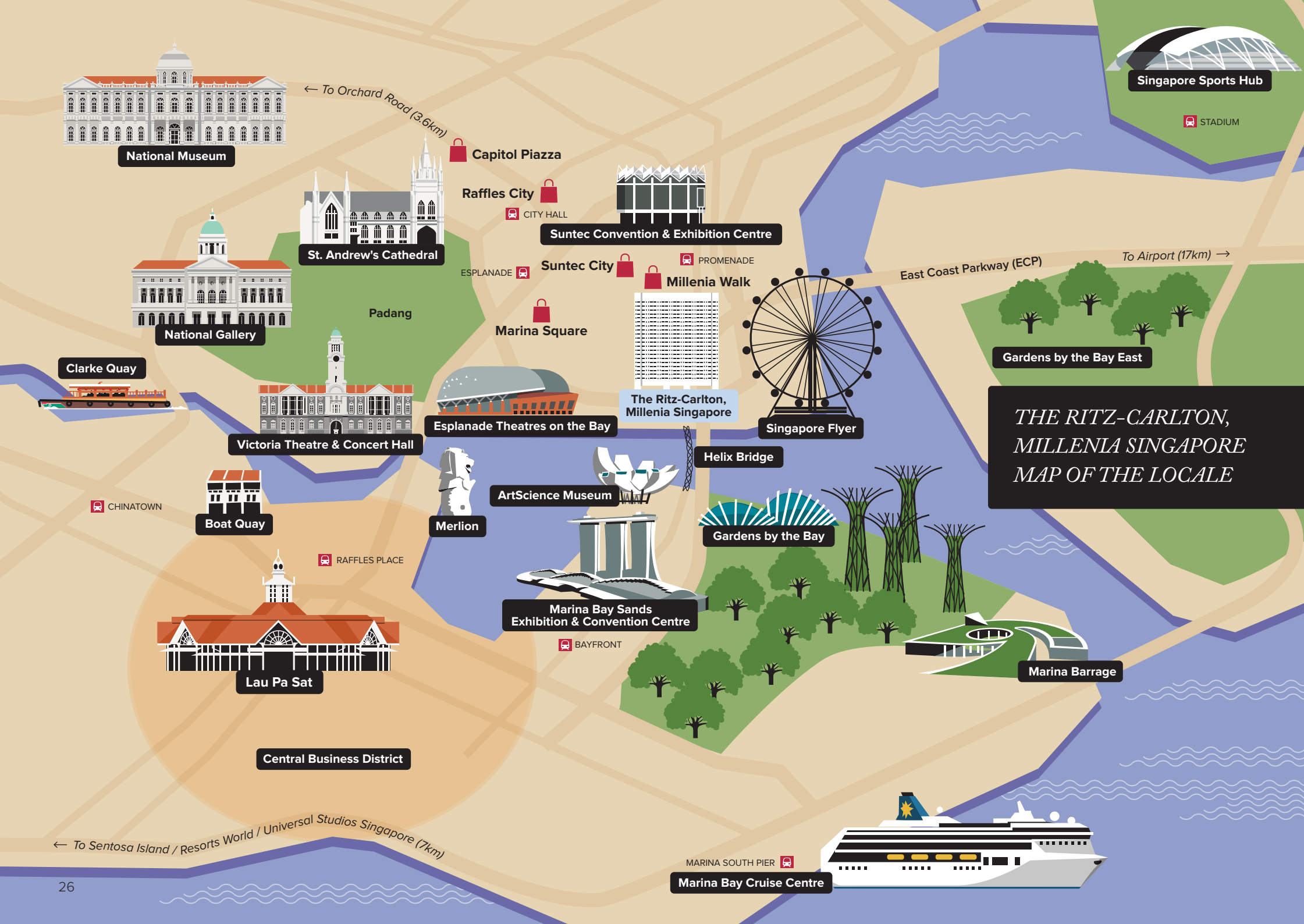
# DISCOVER

## *Revel in the exciting surrounds of Singapore*

Situated in the heart of Marina Bay, Singapore's captivating downtown core, where architectural gems such as Gardens by the Bay, the Singapore Flyer and ArtScience Museum dot the impressive skyline, we are ideally located for you to take in the sights, and unique experiences of this dynamic metropolis.

Located a 15-minute drive away is the world-renowned Changi Airport, while the Suntec Singapore Convention & Exhibition Centre is within walking distance from the hotel.





*THE RITZ-CARLTON,  
MILLENNIA SINGAPORE  
MAP OF THE LOCALE*



**THE RITZ-CARLTON**

MILLENNIA SINGAPORE

7 RAFFLES AVENUE  
SINGAPORE 039799  
T: 65.6337.8888  
RITZCARLTON.COM/SINGAPORE