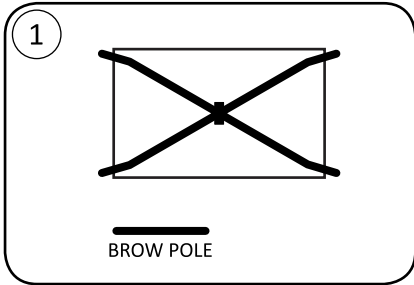
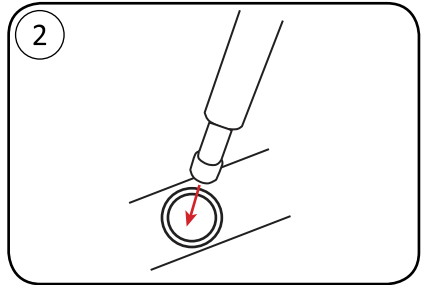


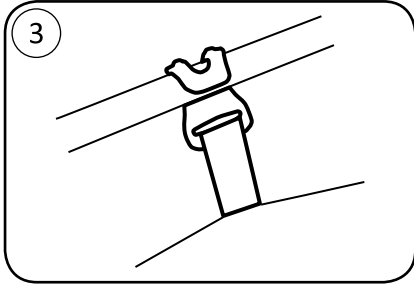
How to set up your Marmot Tungsten UL Hatchback 2P/3P



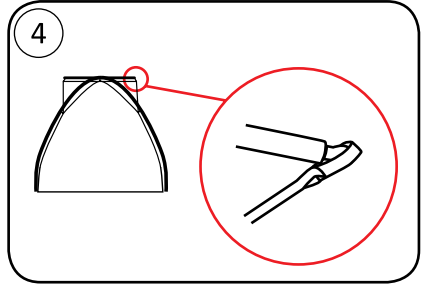
1
CONNECT POLES LEAVING NO SPACE BETWEEN SECTIONS AND LAY ON TENT BODY



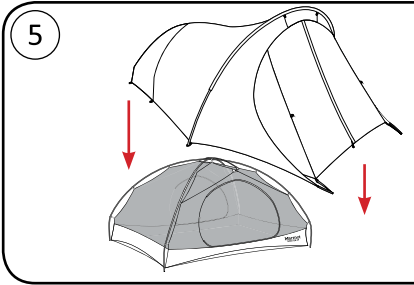
2
INSERT POLE TIPS INTO CORNER GROMMETS



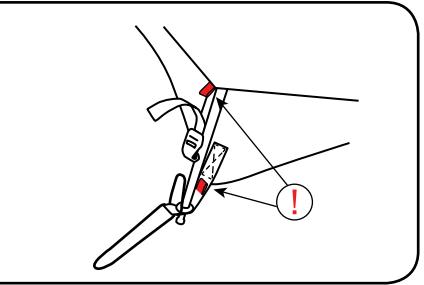
3
CONNECT CLIPS - MATCH WEBBING COLOR TO POLE COLOR



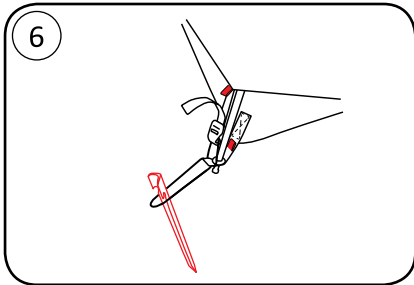
4
PLACE BROW POLE ON TOP OF "X" POLES AND INSERT INTO PLASTIC CAP



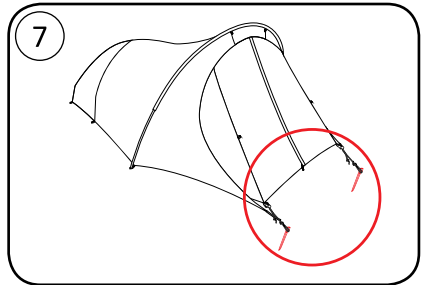
5
PULL RAINFLY OVER BODY



NOTE RED TABS ON FRONT CORNERS
HOOK BUCKLE AROUND CORD AND PULL TO TIGHTEN

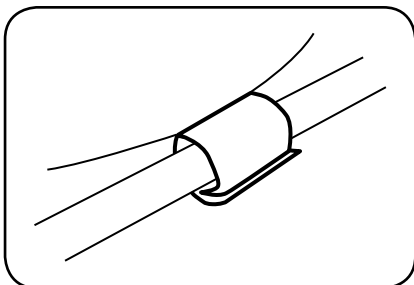


6
STAKE OUT CORNERS

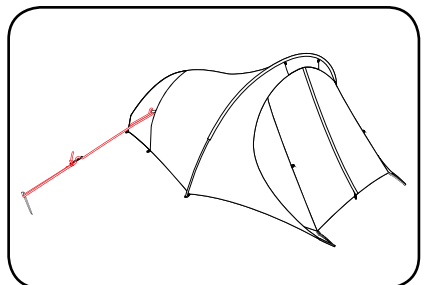


7
STAKE OUT VESTIBULES

OPTIONAL



LOOK UNDER FLY - VELCRO FLY TO POLES



GUY OUT IN HIGH WIND