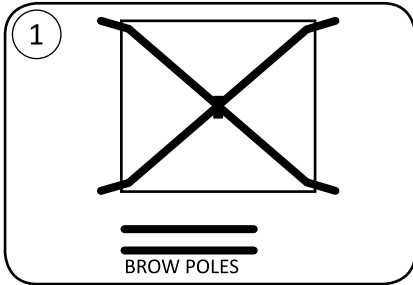
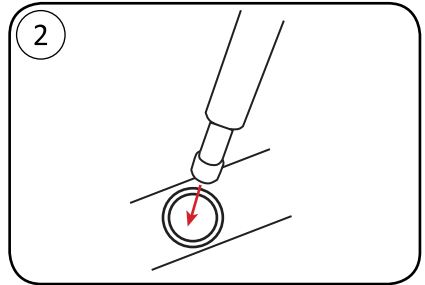


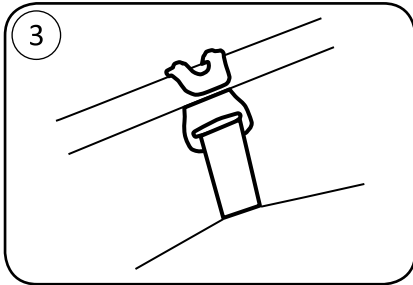
## How to set up your Marmot Tungsten 4P



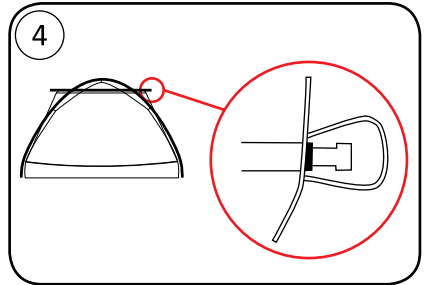
CONNECT POLES LEAVING NO SPACE BETWEEN SECTIONS AND LAY ON TENT BODY



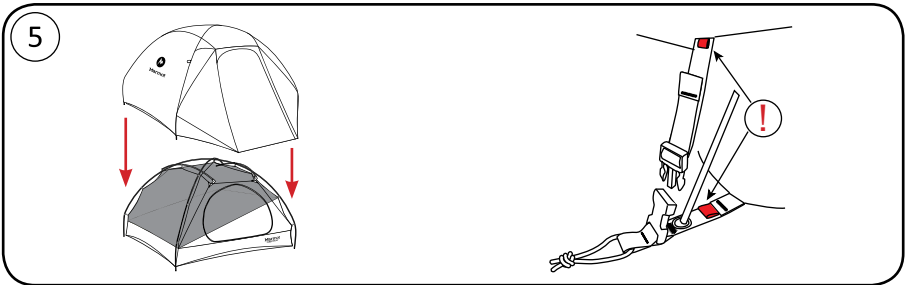
INSERT POLE TIPS INTO CORNER GROMMETS



CONNECT CLIPS - MATCH WEBBING COLOR TO POLE COLOR

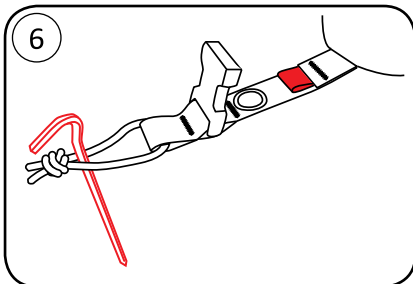


PLACE BROW POLES ON TOP OF "X" POLES AND INSERT INTO GROMMETS

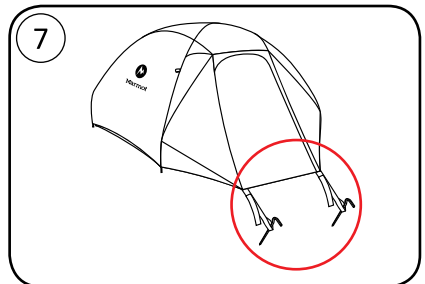


PULL RAINFLY OVER BODY

NOTE RED TABS ON FRONT CORNERS  
CONNECT BUCKLES AND PULL TO TIGHTEN

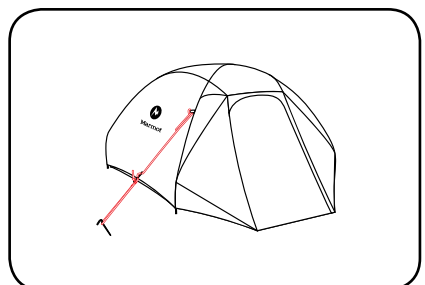
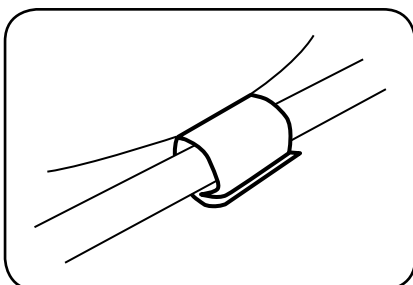


STAKE OUT CORNERS



STAKE OUT VESTIBULES

### OPTIONAL



For additional information about your Marmot® tent  
please visit [www.marmot.com](http://www.marmot.com).