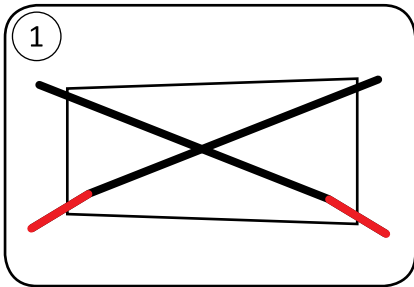
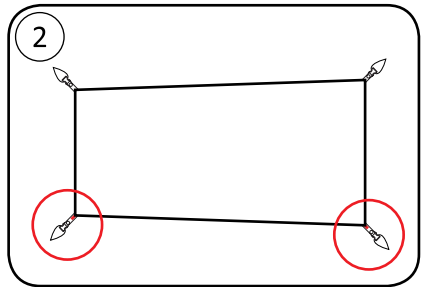


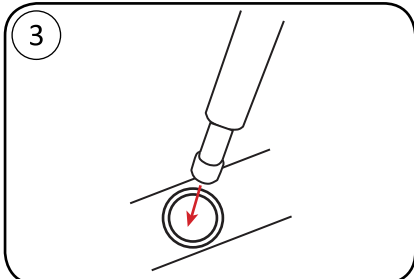
How to set up your Marmot Tungsten 1P



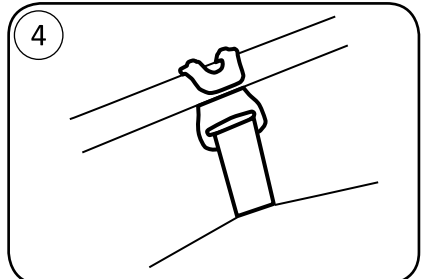
1
CONNECT POLES LEAVING NO SPACE BETWEEN SECTIONS AND LAY ON TENT BODY



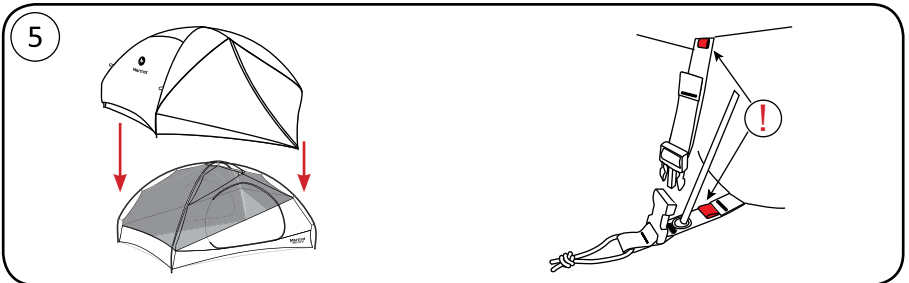
2
INSERT GRAY/DARK GREEN POLE ENDS INTO CORNERS WITH RED TABS



3
INSERT POLE TIPS INTO CORNER GROMMETS

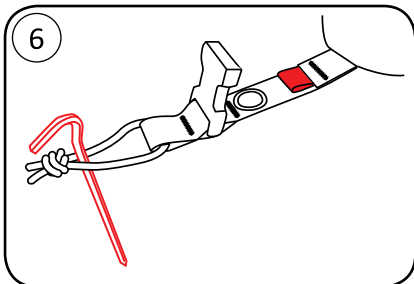


4
CONNECT CLIPS - MATCH WEBBING COLOR TO POLE COLOR

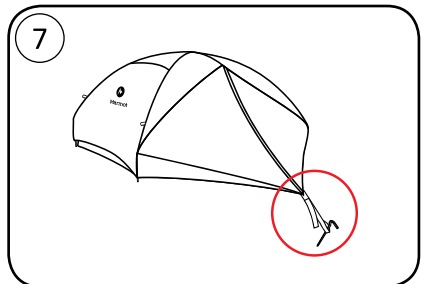


5
PULL RAINFLY OVER BODY

NOTE RED TABS ON FRONT CORNERS
CONNECT BUCKLES AND PULL TO TIGHTEN

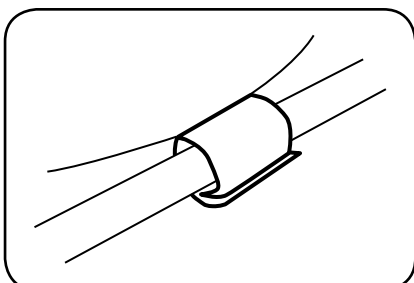


6
STAKE OUT CORNERS

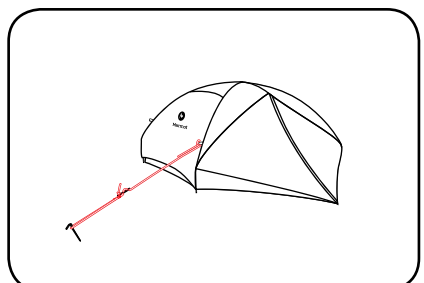


7
STAKE OUT VESTIBULES

OPTIONAL



LOOK UNDER FLY - VELCRO FLY TO POLES



GUY OUT IN HIGH WIND

For additional information about your Marmot® tent
please visit www.marmot.com.