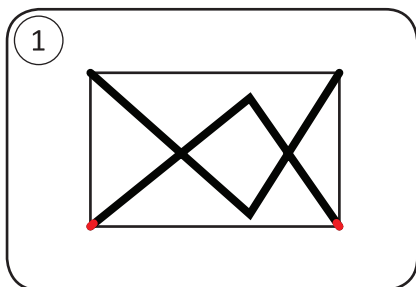
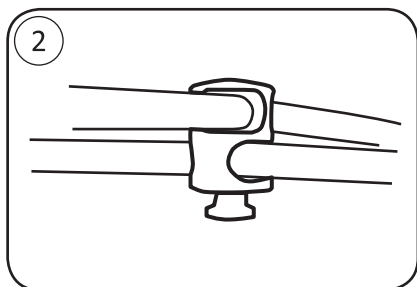


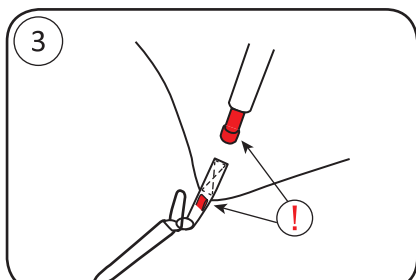
## How to set up your Marmot Nighthawk 2P



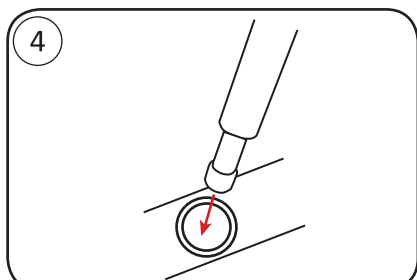
1  
CONNECT POLES AND HUBS LEAVING NO SPACE BETWEEN SECTIONS AND LAY ON TENT



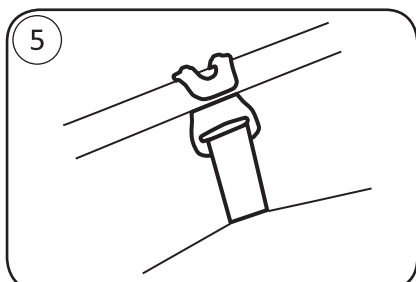
2  
SMALL END OF HUBS MUST POINT DOWN



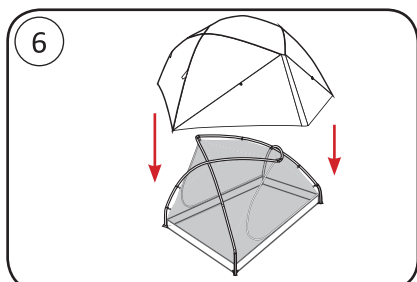
3  
NOTE RED TIPS ON POLES AND CORNER WEBBING



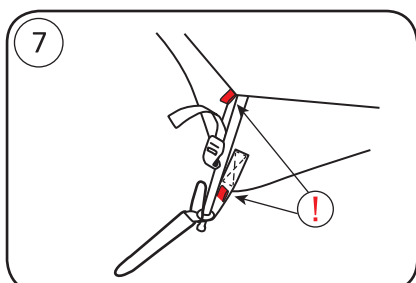
4  
INSERT POLE TIPS INTO CORNER GROMMETS



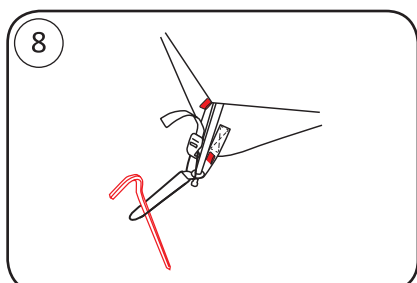
5  
CONNECT CLIPS - MATCH WEBBING COLOR TO POLE COLOR



6  
PULL RAINFLY OVER BODY

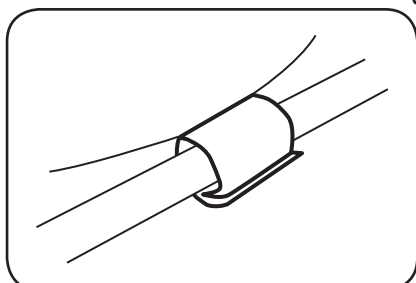


7  
NOTE RED TABS ON FRONT CORNERS  
HOOK BUCKLE AROUND CORD AND PULL TO TIGHTEN

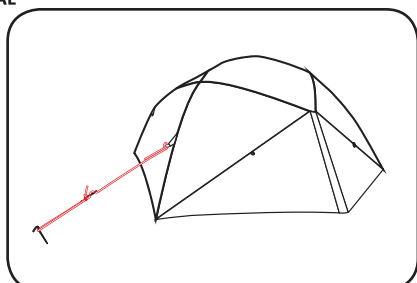


8  
STAKE OUT CORNERS AND VESTIBULES

### OPTIONAL



LOOK UNDER FLY - VELCRO FLY TO POLES



GUY OUT IN HIGH WIND

For additional information about your Marmot® tent  
please visit [www.marmot.com](http://www.marmot.com).