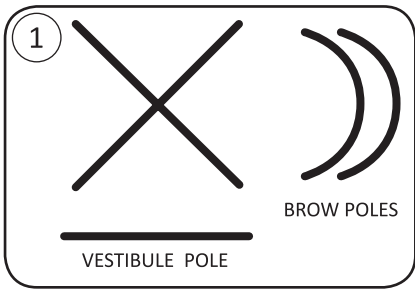
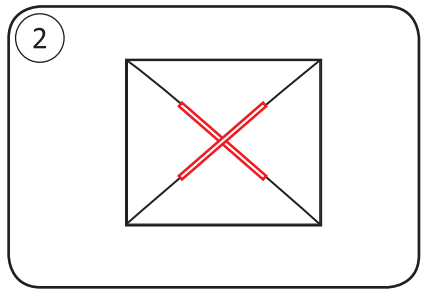


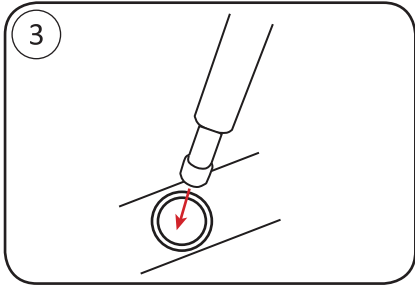
How to set up your Marmot Halo 6P



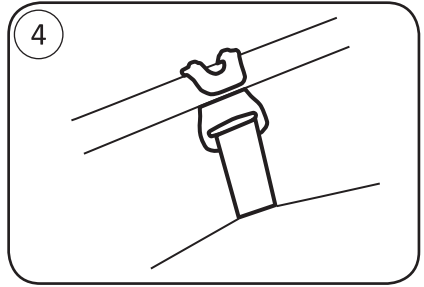
CONNECT POLES LEAVING NO SPACE BETWEEN SECTIONS



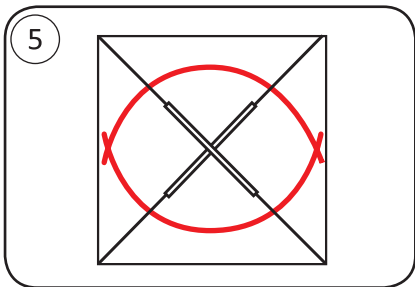
INSERT MAIN POLES THROUGH MIDDLE POLE SLEEVES



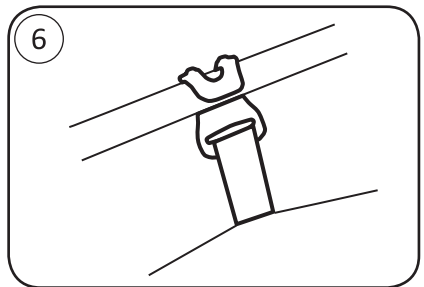
INSERT POLE TIPS INTO CORNER GROMMETS



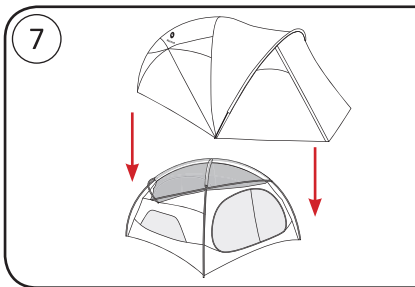
CONNECT CLIPS - MATCH WEBBING COLOR TO POLE COLOR



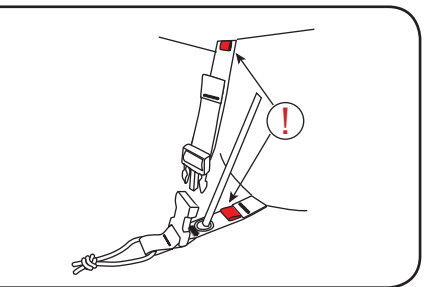
PLACE BROW POLES ON TOP OF MAIN POLES AND INSERT INTO GROMMETS



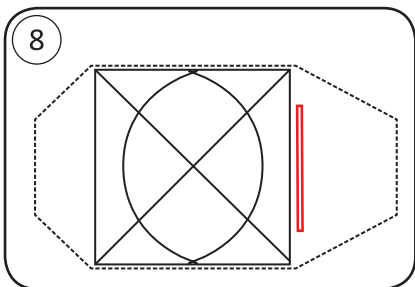
CONNECT CLIPS TO BROW POLES



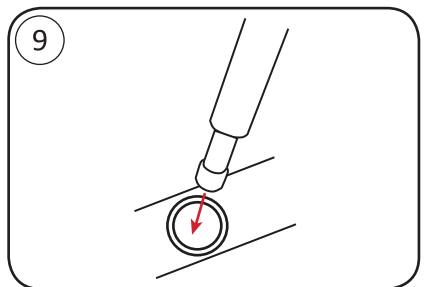
PULL RAINFLY OVER BODY



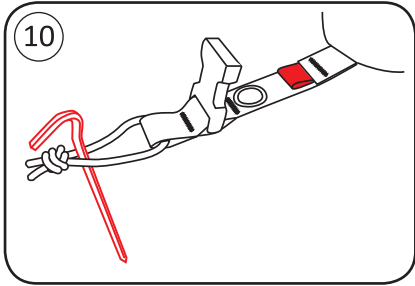
NOTE RED TABS ON FRONT CORNERS
CONNECT BUCKLES AND PULL TO TIGHTEN



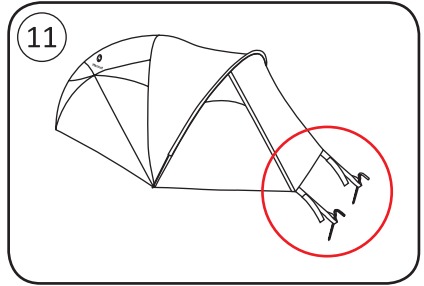
INSERT VESTIBULE POLE THROUGH SLEEVE



INSERT POLE TIPS INTO CORNER GROMMETS

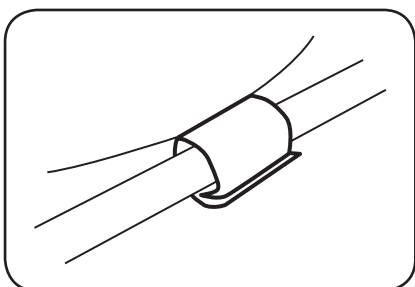


STAKE OUT CORNERS

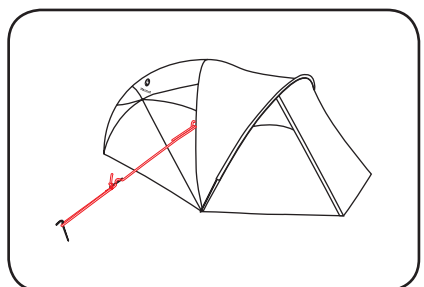


STAKE OUT VESTIBULE

OPTIONAL



LOOK UNDER FLY - VELCRO FLY TO POLES



GUY OUT IN HIGH WIND

For additional information about your Marmot® tent
please visit www.marmot.com.