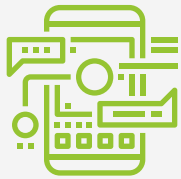


## Benefits

- Find and identify security-related flaws that a malicious user could leverage to compromise the application
- Develop a baseline standard for weakness identification, mitigation and prevention efforts
- Fix bugs early rather than patching them later at an increased cost
- Build the confidence of stakeholders in the technical quality of the execution of source code



Though 2017, 75% of mobile security breaches will be the result of mobile application misconfigurations.

*Source: Gartner*

Security should be a focus during the entire software development life cycle (SDLC). Different studies and surveys show that approximately 75% of attacks happen due to insecure application, which includes insecure code. A review of the source code has now become an essential part of SDLC due to increasing incidents of hacking and server attacks.

Cylance<sup>®</sup> Consulting's Source Code Review **finds common vulnerabilities** by performing a deep analysis of your applications, including open source and third-party components, without actually executing them. A code review can **facilitate the communication of institutional knowledge** between developers.

## Service Overview

Cylance Consulting's experts will perform a manual code review and automated static analysis test on the application's code base using a combination of commercial and Cylance-proprietary tools, techniques and methodologies. The assessment will cover the following categories, in addition to identifying vulnerabilities beyond the Open Web Application Security Project (OWASP) Top 10:

- **Data Flow Analysis** — Trace data from input points to output points, including storage and destruction, to identify potential weaknesses
- **Control Flow Analysis** — Identify threats by stepping through logical conditions and identifying all possible paths through which code may traverse
- **Structural Analysis** — Evaluate the security of high-level architecture at multiple-tiers and the composition of applications and subsystems, including physical deployment characteristics
- **Configuration Analysis** — Assess the security configuration of all relevant components to identify vulnerabilities
- **Semantic Analysis** — Analyze the code base within an application's context to identify vulnerabilities unique to the application and environment

## Deliverables

Cylance Consulting will furnish a comprehensive report detailing:

- Overall function of the code as it pertains to the intended design and architecture
- General comments and issues that are endemic or systemic within the code base
- Module by module findings identifying issues within the implementation

Ensure security tools and processes are integrated into your software applications. Contact Cylance Consulting or your technology provider to discuss a Secure Code Review.