



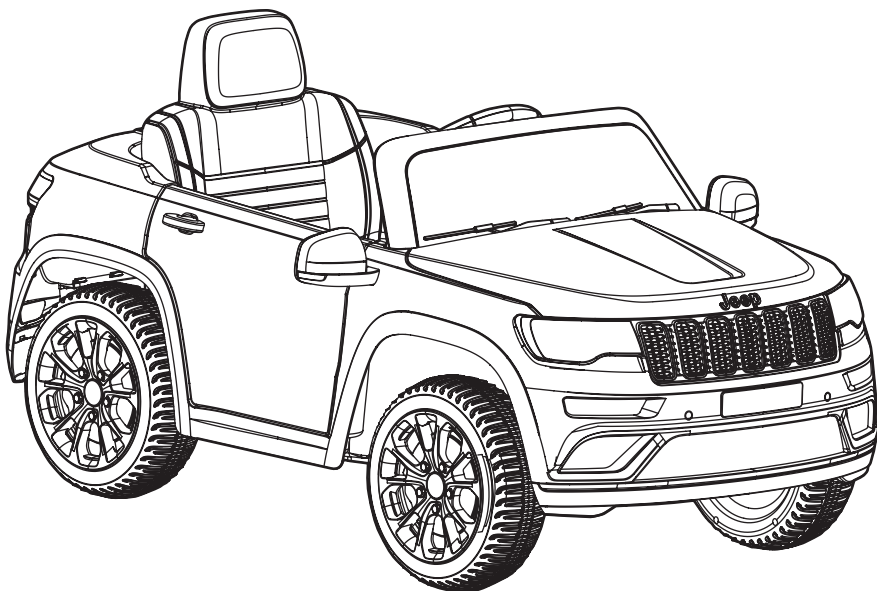
**DYNACRAFT®**

## **OWNER'S MANUAL**

# **6V Jeep Grand Cherokee**

---

THIS MANUAL CONTAINS IMPORTANT SAFETY, PERFORMANCE AND MAINTENANCE INFORMATION. READ THE MANUAL BEFORE TAKING YOUR FIRST RIDE OR ALLOWING YOUR CHILD TO RIDE YOUR NEW ELECTRIC RIDE-ON TOY. KEEP THE MANUAL HANDY FOR FUTURE REFERENCE.



**DO NOT RETURN THIS ITEM TO THE STORE**  
CONTACT DYNACRAFT CUSTOMER SERVICE FOR ASSISTANCE

**[dynacraftwheels.com/contact](http://dynacraftwheels.com/contact)**

or 1-800-551-0032 9AM–4PM ET



---

**FOR AGES 3+**  
**MAXIMUM WEIGHT: 65lb (29.5kg)**

**NOTE:** Illustrations in this Manual are for reference purposes only and may not reflect the exact appearance of the actual product. Specifications are subject to change without notice.









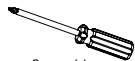






# PARTS DIAGRAM

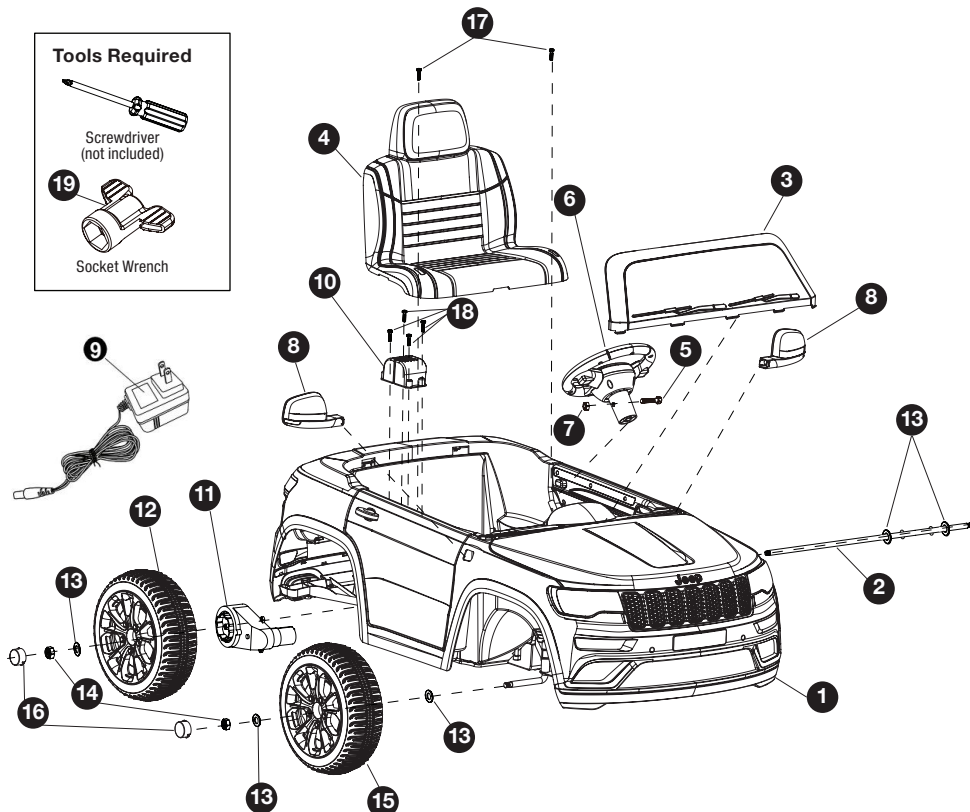
## Tools Required



Screwdriver  
(not included)



Socket Wrench



1. Plastic Body Assembly x1
2. Rear Wheel Axle x1
3. Windshield x1
4. Seat x1
5. M5x40 Machine Screw x1
6. Steering Wheel x1
7. M5 nut x1
8. View Mirror x2
9. Charger x1
10. Motorhood x1

11. Gear Box x1
12. Rear Wheel x2
13. Ø12 Washer x8
14. M10 Lock Nuts x4
15. Front Wheel x2
16. Axle Cap x4
17. M5x16 Machine Screw x2
18. 4x12 Round Head Screw x4
19. Socket Wrench x2

**NOTE:** Some parts shown are assembled on both sides of ride-on toy. Parts are packaged at both ends of box and in ride-on chassis. Ensure all parts are present before assembly.

# ASSEMBLY

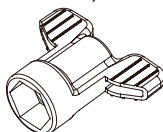
Your new ride-on toy requires adult assembly. Please set aside around 30 minutes for assembly. Please identify all parts before assembly and save all packaging material until assembly is completed to ensure that no parts are discarded.

## TOOLS REQUIRED:

Phillips Screwdriver  
(not included)



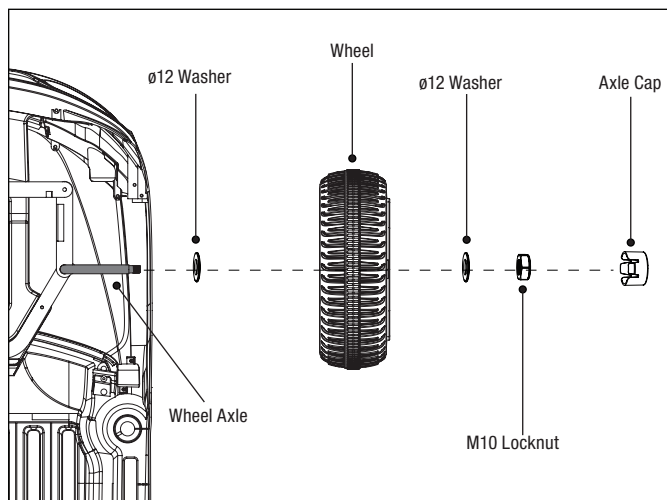
17 mm Socket Wrench  
(included)



**⚠ WARNING:** Children can be harmed by small parts, sharp edges and sharp points in the ride-on toy's unassembled state, or by electrical items. In the unassembled state, this package contains small parts. Adult assembly is required; children should not handle parts, or help in assembly of the ride-on toy.

## 1. FRONT WHEEL ASSEMBLY

- Turn the ride-on toy body upside down.
- Remove all parts from front axle.
- Fit a Ø12 washer onto the axle.
- Slide the wheel onto the axle.
- Install a Ø12 washer and locknut, then tighten it. **NOTE: Do not overtighten.**
- Fasten the axle cap.
- Repeat above operation for the front wheel on the other side.









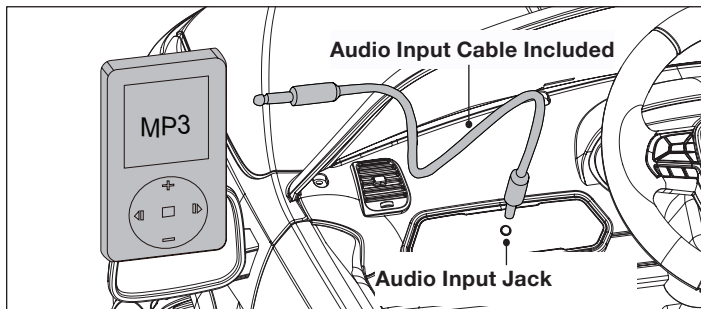








3. Adjust your audio device or MP3 player volume to low level and turn the power switch on your ride-on toy to the “ON” position.
4. Then adjust the volume to increase or decrease its sound level as desired.



**NOTE:** MP3 player or Audio device not included.

**⚠ WARNING:** Do not let use of an MP3 player or other audio device interfere with safe riding.

### IMPORTANT

Always stop ride-on toy when changing the direction to avoid damage to the gears and motor.

- This ride-on toy has an adjustable seat belt; please instruct children on how to fasten the seat belt before using.
- Do not let any child touch the wheels or be near them when the car is moving.
- Make sure you come to a complete stop before changing directions from forward to reverse.
- To avoid accidents, please inspect the ride-on toy before riding to ensure that it is in proper working order and safe to ride.
- Protective equipment should always be worn.
- This toy has no brake; to stop, remove foot from foot pedal.
- Check all the screws, cap nuts and protective coverings regularly and tighten as required. Check plastic parts on a regular basis for cracks or broken pieces.

### NOTE

- Always make sure the power switch is in the “OFF” position whenever the ride-on toy not in use.
- Batteries may become damaged and no longer accept a charge if power switch is left in the “ON” position when not in use.
- Never store the product in outdoor conditions, never store it in the rain, and never store the product in freezing or below freezing temperatures. These low temperatures will permanently damage the battery.

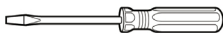
## SAFETY PRECAUTIONS

- Your new battery must be charged for at least 18 hours before you use it in your ride-on toy for the first time.
- The child must have adult supervision at all times.
- Do not ride on the road, footpaths, near pools, or bodies of water.
- Do not allow children under the recommended age to ride the ride-on toy; please refer to the age grading.
- Do not allow riders over the recommended weight rating or age grading to use the ride-on toy.
- To "stop" you must take your foot off the pedal.
- Charging should only be done by an adult.
- An adult must teach the child how to operate the ride-on toy.
- Do not ride on hills or slopes, or in sand, or on other soft, wet, or slippery surfaces.
- Do not use a different size battery. Use only original or recommended replacement batteries.
- The ride-on toy is designed to carry only one rider at a time. Never allow more than one rider or over-load the ride-on toy.
- This product should be assembled and checked by adults before use.
- Don't wash the ride-on toy with water. Just clean it with a cloth.

## DETAILED MAINTENANCE AND REPAIR

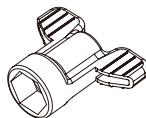
F

**⚠ WARNING:** Turn power "OFF" before conducting any maintenance procedures.



TOOLS REQUIRED:

Flat head Screwdriver  
(not included)



17 mm Socket Wrench  
(included)





























**DO NOT RETURN THIS ITEM TO THE STORE**  
**CONTACT DYNACRAFT CUSTOMER SERVICE FOR ASSISTANCE**

**dynacraftwheels.com/contact**  
or 1-800-551-0032 9AM–4PM ET

Please have the following information available:

**Model Number**

Example: 8000-00

**Production Date**

Example: MM.DD.YYYY

**Serial Number**

Example: DXXXX000000000

This information is provided on a white sticker located on your unit and is required to help us handle your request.

Please do not remove the sticker from your unit.



**DYNACRAFT®**

**Dynacraft BSC, Inc.**  
1501 Crossgate Road  
Port Wentworth, GA 31407  
Call Toll Free 1-800-551-0032  
Monday – Friday 9AM to 4PM EST  
**dynacraftwheels.com**  
©2021 All rights reserved

2021 Printed in China

**BM214**