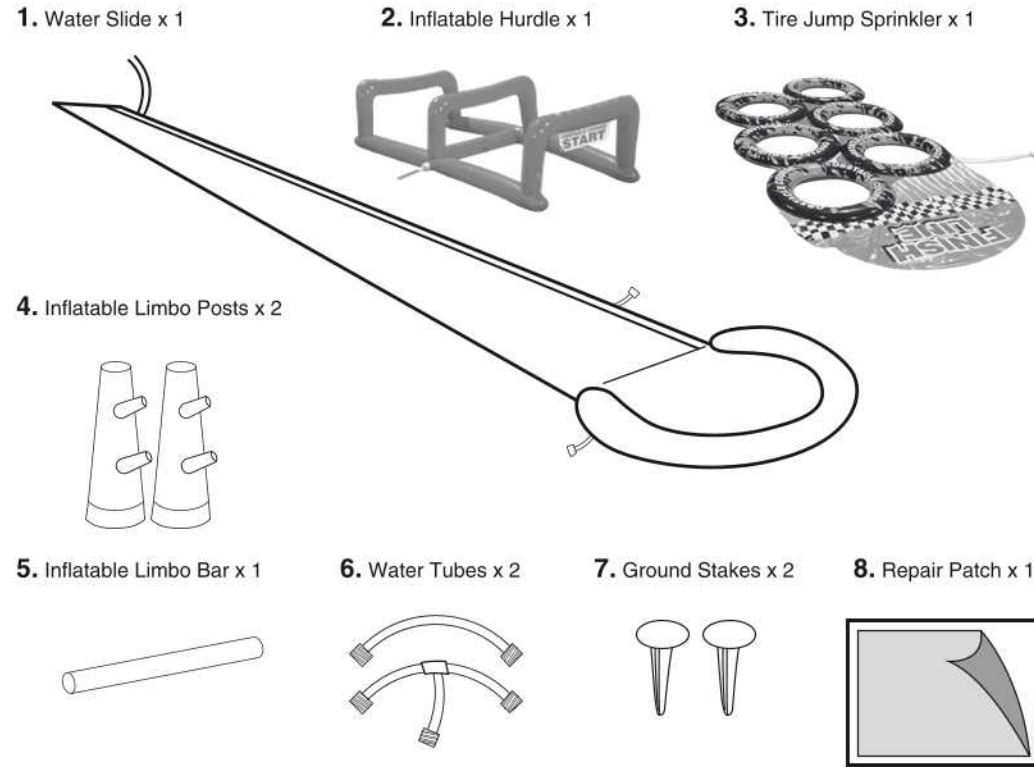




AQUA BLAST OBSTACLE COURSE™



IMPORTANT SAFETY INSTRUCTIONS.

PLEASE READ THESE INSTRUCTIONS THOROUGHLY BEFORE SETUP AND USE.

KEEP THESE INSTRUCTIONS IN A SAFE PLACE FOR FUTURE REFERENCE.

FOR AGES 5-12

ADULT SET UP IS REQUIRED.

DO NOT STAND, KNEEL, WALK, OR RUN ON THE SLIDE SURFACE.

⚠ Safety Information

WARNING!

To avoid the risk of serious injury or death:

- Adult supervision required.
 - Adult assembly required.
 - Setup should be done a safe distance away from fences, garages, houses, overhanging branches, laundry lines or overhanging electrical wires.
 - Use on a flat, level lawn only. Do not use on pavement or other hard surfaces. Lawn should be free of rocks, bumps, depressions, sticks, or other sharp objects.
 - Because of their larger size, older children and adults risk spine, neck, head or other life-threatening injuries from using this slide.
 - Reckless use, misuse or abuse of this slide may cause serious, even fatal injury.
 - Read all instructions before using this product.
 - Correctly follow all instructions and safety requirements shown in this manual; otherwise injury or death, especially for children, could result.
 - All inflatables are temperature sensitive, therefore never unfold or inflate in temperatures below 50 °F (10 °C).
 - NOT FOR ADULT USE. NOT FOR CHILDREN OVER 12 OR UNDER 5 YEARS OF AGE. THIS PRODUCT IS NOT FOR USE BY ANYONE WEIGHING OVER 110 lb (50 kg).
- While every attempt is made to embody the highest degree of protection in all equipment, we cannot guarantee freedom from injury. The user assumes all risk of injury resulting from use. All merchandise is sold on this condition, which no representative of the company can waive or change.

IMPORTANT WATER PRESSURE AND OPERATING INFORMATION

After connecting the hose connector to your garden hose, TURN ON WATER SLOWLY and adjust the water pressure accordingly. Water pressure can vary dramatically between cities. Please read the following for answers to common questions.

Areas of LOW WATER PRESSURE

- For maximum performance, it is recommended to use a 5/8 in (1.6 cm) diameter garden hose.
- If water does not arch on the product / spray properly, it is usually due to low water pressure. Make sure the water is on all the way. As long as the slides are getting wet, it will be fun to use.

- Long hose reduces water pressure: The longer the hose, the farther the water travels from the faucet, thus reducing water pressure. In areas of low water pressure, this could affect the performance of the product. Try using a shorter hose if you have one.

Areas of HIGH WATER PRESSURE

- If water arches / sprays over the product, adjust the faucet to lower the water pressure. It is important that the water lands on the product to keep it wet and slick.

MAINTENANCE OF PRODUCT

1. Check the product at regular intervals for holes, tears or other damage. DO NOT use a damaged product. Use of a damaged product could result in serious injury or death.
2. In addition to checking the product at regular intervals, be sure to complete a thorough check of the entire product at the beginning of each season or series of use.
3. If any components of the product are damaged or have deteriorated, discontinue use and contact the manufacturer.
4. Regularly check the condition of the ground stakes that hold the slide in place. Damage to or deterioration of the stakes could result in the slide becoming unstable, which could result in serious injury.
5. Regularly check the condition of water plugs and water bags that hold the product in place. Damage to or deterioration of the water bags could result in the product becoming unstable, which could result in serious injury.

REPAIR PATCH INSTRUCTIONS

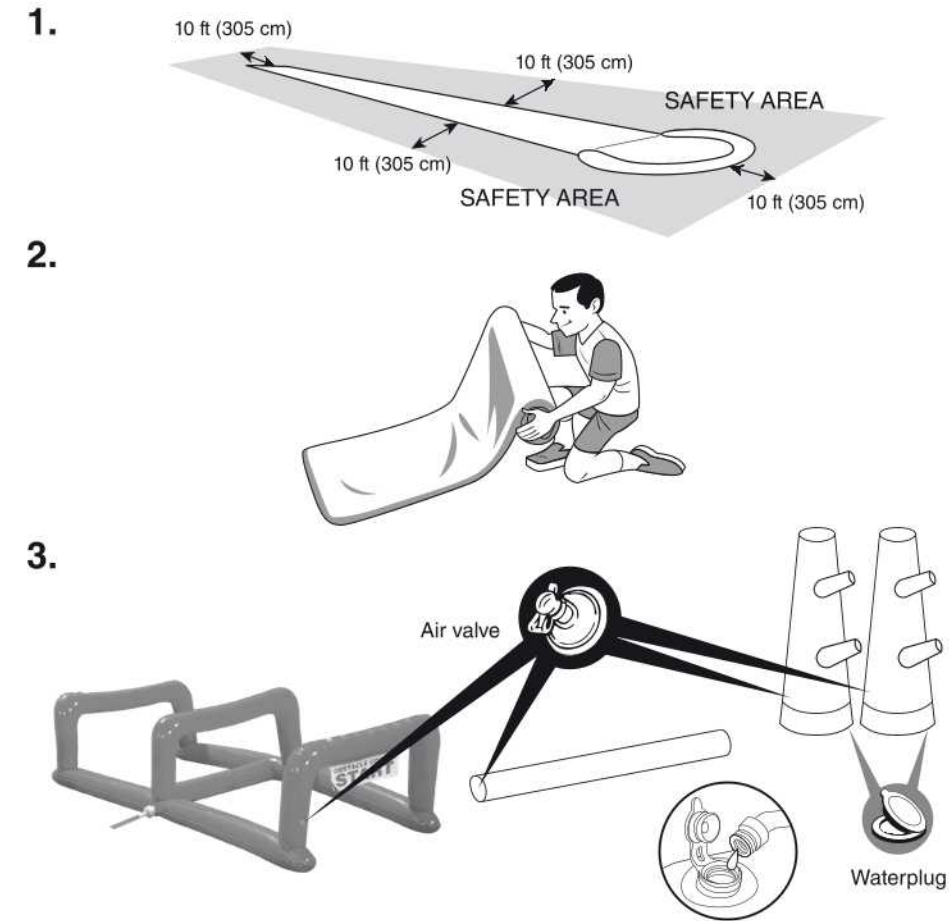
For your convenience, a repair patch has been included to repair holes in the inflatable section.

Do not use the patch for holes or rips on the seam.

In the event of an accidental puncture, cut out a suitably sized patch, making sure you round the corners of your repair patch to avoid peeling. Make sure the area to be patched is clean and dry. Press patch firmly over the puncture. Do not inflate for 20 minutes.

The repair patch should be applied by an adult.

Setup Instructions



1. **PLACEMENT DIAGRAM:** Use on a flat, level lawn only, not on pavement or other hard surfaces. Lawn should be free of rocks, bumps, depressions, sticks, etc. This product should be setup in a location that has a minimum distance of 10 ft (305 cm) away from any freestanding structures or obstructions including: houses, garages, fences, trees, playground equipment and large rocks.

2. Roll out this product. Inspect for holes, tears or other damage.

3. Open the water plugs on the limbo posts. Use a garden hose to slowly fill the anchor water bags.

NOTE: You must fill the water bags before inflating this product with air. The water plugs have a wide opening, as shown above.

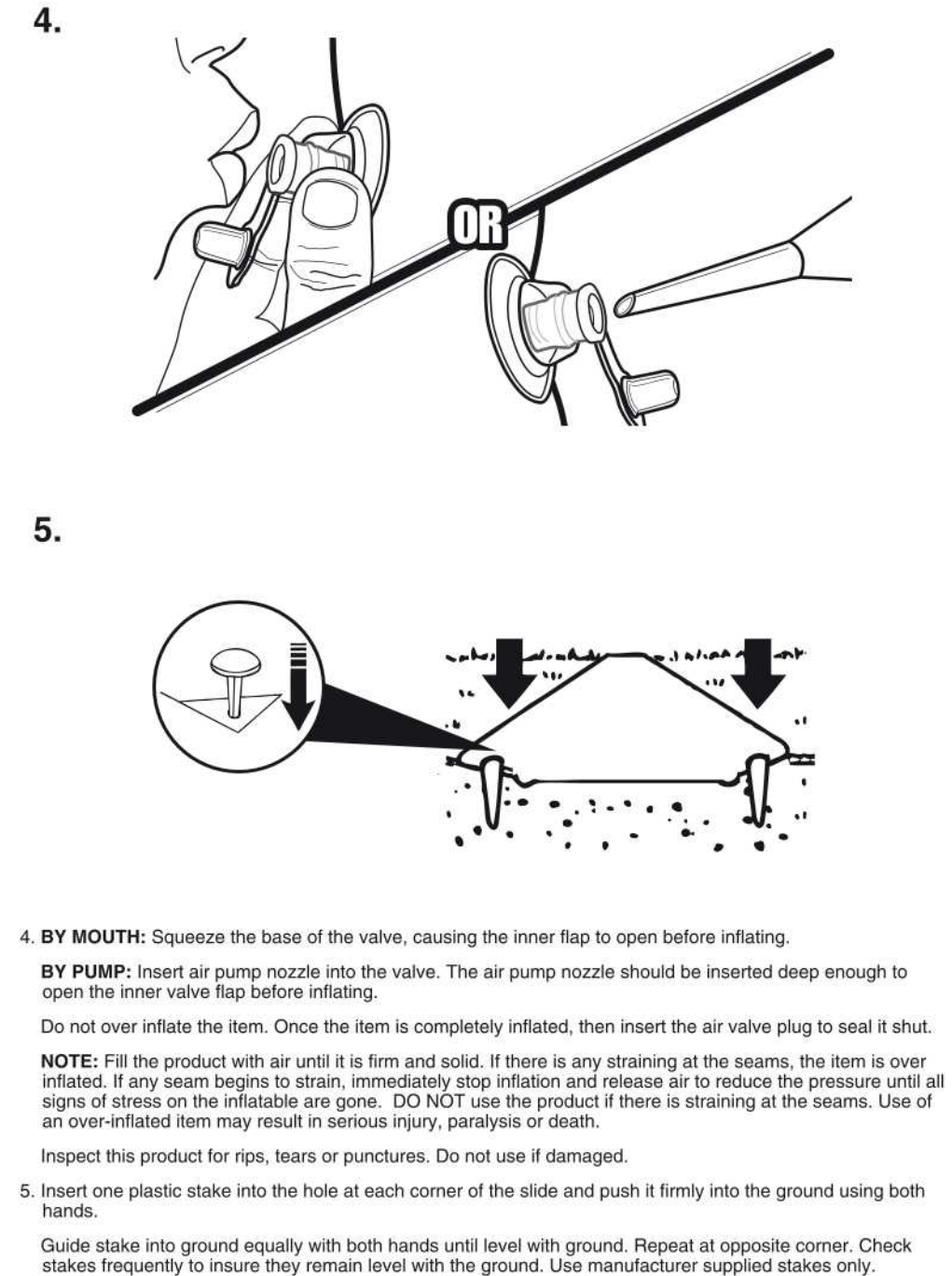
WARNING: Overfilling the water bags will cause damage to product.

NOTE: When filling the anchor water bags, do not fully insert the garden hose into the water plug. The hose may cause an increase of pressure in the anchor water bags and may cause it to burst. Instead, place the garden hose just outside the plug opening and allow the water to pour in. When full, insert and close the plug.

Unplug the air valves to inflate this product with AIR.

NOTE: For easy air inflation, use a manual air pump designed specifically for plastic inflatables.

Setup Instructions



4. **BY MOUTH:** Squeeze the base of the valve, causing the inner flap to open before inflating.

BY PUMP: Insert air pump nozzle into the valve. The air pump nozzle should be inserted deep enough to open the inner valve flap before inflating.

Do not over inflate the item. Once the item is completely inflated, then insert the air valve plug to seal it shut.

NOTE: Fill the product with air until it is firm and solid. If there is any straining at the seams, the item is over inflated. If any seam begins to strain, immediately stop inflation and release air to reduce the pressure until all signs of stress on the inflatable are gone. DO NOT use the product if there is straining at the seams. Use of an over-inflated item may result in serious injury, paralysis or death.

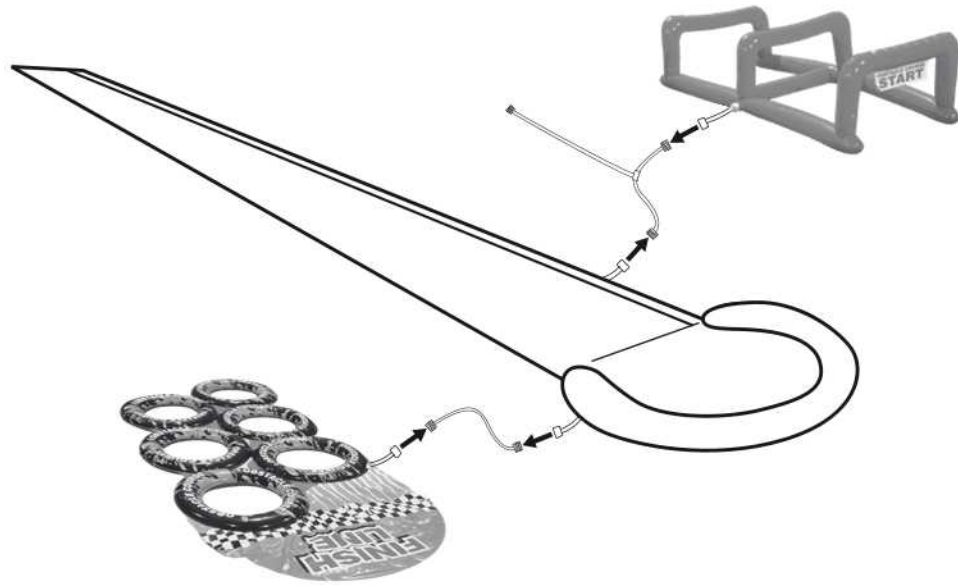
Inspect this product for rips, tears or punctures. Do not use if damaged.

5. Insert one plastic stake into the hole at each corner of the slide and push it firmly into the ground using both hands.

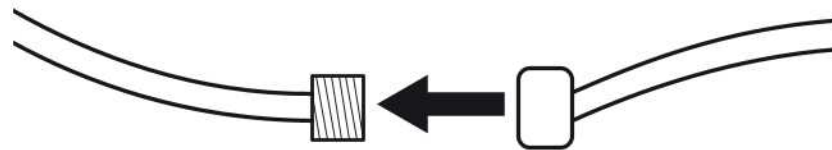
Guide stake into ground equally with both hands until level with ground. Repeat at opposite corner. Check stakes frequently to insure they remain level with the ground. Use manufacturer supplied stakes only.

Setup Instructions

6.



7.

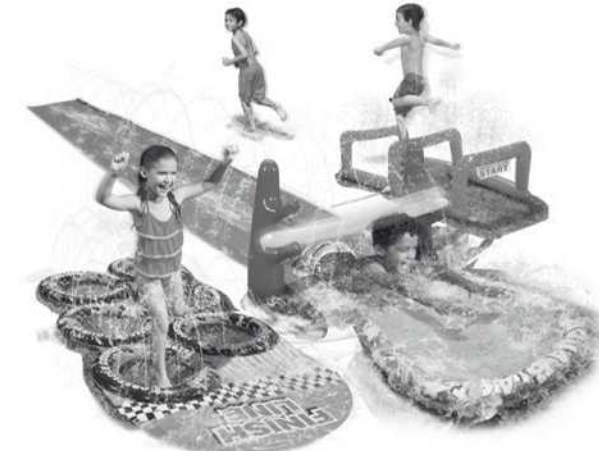
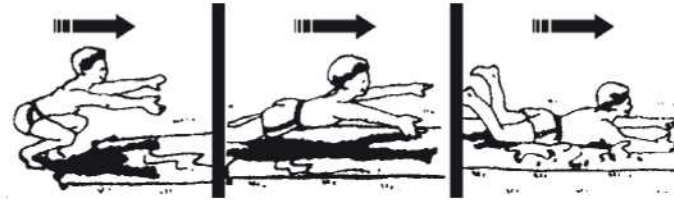


6. Attach two water tubes to the water slide as shown in diagram 6. Then connect the ends of two water tubes to the tire jump sprinkler & inflatable hurdle. Tighten until it cannot turn any further.

NOTE: Ensure kinks are removed from water tubes.

7. Before connecting the water slide to a water-source, use a standard garden hose to wet the entire slide surface. Finally, attach the end of a garden hose to the hose connector on the slide. Turn the connector to tighten; tighten until it cannot turn any further. **TURN ON WATER SLOWLY.** Gradually increase the flow of water until a tunnel of water arches and lands on the slide, keeping the slide wet.

Use Instructions



HOW TO PLAY

To Slide: Run & jump low to the ground from a crouching position. Land on your stomach, keeping your arms stretched out in front of you. **KEEP YOUR HEAD UP!**

When you are finished sliding, scoot off the slide and stand up on the grass. Walk back to the beginning of the slide and start again.

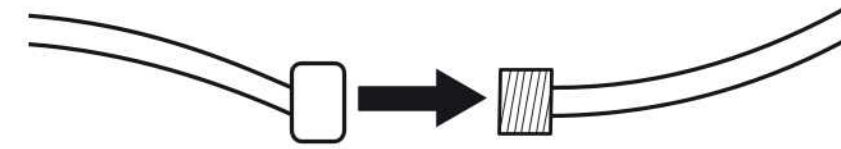
WARNING! Never stand, walk or run on the slide as you may slip and injure yourself.

NOTE:

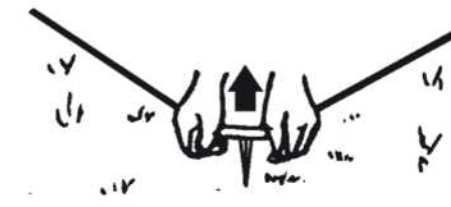
1. Competent adult setup and supervision is required at all times. Responsible adults should instruct children on the proper use of this product.
2. Remove all hard or sharp objects such as toys, buckles, keys, jewelry, watches, etc. from person and pockets.
3. **ALWAYS** slide down on stomach, facing forward with arms extended in front of you. **NEVER** slide on your knees, head or feet. **NEVER** dive head first.
4. Be sure the slide surface is wet before sliding down.
5. No diving.
6. Only one child should be on the sliding lane surface at a time.
7. For long periods of play, move slide occasionally to prevent causing depressions in ground underneath.
8. Check stakes occasionally to make sure they stay secure and flat on the ground.
9. Remove the product from the lawn when not in use and store properly to prevent the grass from yellowing or other damage.

After Use and Storage

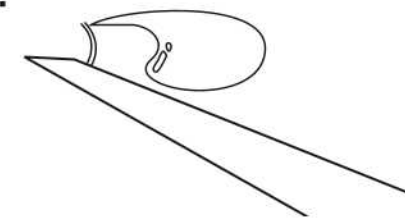
1.



2.



3.



4.



5.



1. Disconnect the garden hose from the hose connector.
2. Remove the stakes from the ground by pulling on the head of the stake. Do not pull on the product's corner.
3. Drain this product and let it dry.
4. **PUTTING YOUR PRODUCT AWAY:** Make sure the product and its accessories are free of dirt, leaves, sand, etc., before deflating.
5. Once the product is completely deflated and dry, carefully roll it up and store in a secure location away from children. Do not store it indoors or in a closed container until it is completely dry.
The water slide should be rolled for storage to avoid creasing. Do not fold!
NOTE: Store this product in a secure place, away from children, to prevent suffocation.

BANZAI IS USED UNDER LICENSE BY FOCUS BRAND LTD.
CONTENTS AND SPECIFICATIONS MAY VARY FROM THOSE ILLUSTRATED.

BANZAI[®]

38062
TANG RONG ROAD,
CHANGPING, DONGGUAN, CHINA
ALL RIGHTS RESERVED
MADE IN CHINA
www.toysinquiry.com