



53346E

53350E/53368E/53370E

53380E/53382E/53388E

www.bestwaycorp.com

OWNER'S MANUAL

IMPORTANT SAFETY INSTRUCTIONS
READ ALL INSTRUCTIONS BEFORE ASSEMBLING THIS INFLATABLE
DEVICE AND KEEP INSTRUCTIONS FOR FUTURE USE.
FAILURE TO FOLLOW THESE INSTRUCTIONS COULD RESULT IN
SERIOUS INJURY OR DEATH.

WARNING

WARNING

Electrocution Risk



Keep all electrical lines, radios, speakers, and other electrical devices away from inflatable device. Do not place inflatable device near or under overhead electrical lines.

WARNING

Prevent Drowning



Children under 5, especially toddlers are at highest risk of drowning. Closely watch children who are in or near this inflatable device. Empty inflatable device or prevent access when not in use.

Prevent Young Children from Drowning:

- Install fencing or other approved barrier around all sides of the inflatable device.
- State or local laws or codes may require fencing or other approved barriers. Check state or local laws and codes before setting up the inflatable device.
- Drowning occurs silently and quickly. Assign an adult to supervise the inflatable device.
- Keep children in your direct sight when they are in or near the inflatable device and when you are filling and emptying the inflatable device.
- When searching for a missing child, check the pool first, even if you think your child is in the house.

Be Prepared to Respond to an Emergency:

- Keep a working phone and list of emergency numbers near the inflatable device.
- Become certified in cardiopulmonary resuscitation (CPR) so you can respond to an emergency.

WARNING:

- Failure to follow the installation and operating instructions present a risk of serious injury or death.
- Place the inflatable device on level ground, not less than 10ft (3m) in any direction from any structure or obstruction such as a fence, garage, house, overhanging branches, laundry lines, or electrical wires.
- Do not install inflatable device over concrete, asphalt, packed earth, carpet or any other hard surface. A fall onto a hard surface can result in serious injury to the user.
- To be used on soft ground only, the impact absorbing material (eg. Rubber mulch, engineered wood fiber (EWF) etc) shall be at least 6.6ft (2m) from opening in all directions away from the inflatable device.

AIR-BLOWER SAFETY INFORMATION

- READ AND SAVE THESE INSTRUCTIONS
- USE ONLY ON GFCI PROTECTED RECEPTACLES

WARNING - ELECTROCUTION HAZARD: DO NOT USE EXTENSION CORDS WITH THIS PRODUCT.

WARNING:

- To reduce the risk of fire or electric shock, do not use this air blower with any solid-state speed control device.
- Prevent sharp and hard objects from dropping into and prevent liquid from flowing into the air blower.
- Do not wash the air blower with liquid, you must first unplug it from power source and then wipe it with wet cloth when you clean it.
- Do not draw and pull motor leads, and do not bump the air blower, you'd better use the air blower between negative five and fifty centigrade, if you let the air blower be baked in the high temperature, motor leads enamelled cables and heating bodies will aging and shorten it's life.

CAUTION - ELECTRICALLY OPERATED PRODUCT:
NOT RECOMMENDED FOR CHILDREN UNDER 14 YEARS OF AGE.
AS WITH ALL ELECTRIC PRODUCTS, PRECAUTIONS SHOULD BE
OBSERVED DURING HANDLING AND USE TO PREVENT ELECTRIC
SHOCK.

KEEP CHILDREN AWAY: Do not allow children to play with or around the unit, in any way, which could result in injury.

PROTECT POWER CORD FROM DAMAGE: Never operate a unit with a damaged power cord, as this may lead to electrical or fire hazards. If the power supply cord is damaged, it must be replaced by a cord of the same type and amperage rating. Always check the adaptor for any conditions which may result in the risk of fire, electric shock, or injury to persons and that, in an event such conditions, do not use the product until it was properly repaired.

This device complies with part 15 of the FCC Rules. Operation is subject to the following two conditions:

(1) This device may not cause harmful interference, and (2) this device must accept any interference received, including interference that may cause undesired operation.

• Warning: Any changes or modifications to this unit not expressly approved by the party responsible for compliance could void the user's authority to operate the equipment.

• NOTE: This equipment has been tested and found to comply with the limits for a Class B digital device, pursuant to part 15 of the FCC Rules. These limits are designed to provide reasonable protection against harmful interference in a residential installation. This equipment generates, uses and can radiate radio frequency energy and, if not installed and used in accordance with the instructions, may cause harmful interference to radio communications. However, there is no guarantee that interference will not occur in a particular installation. If this equipment does cause harmful interference to radio or television reception, which can be determined by turning the equipment off and on, the user is encouraged to try to correct the interference by one or more of the following measures:

—Reorient or relocate the receiving antenna.

—Increase the separation between the equipment and receiver.

—Connect the equipment into an outlet on a circuit different from that to which the receiver is connected.

—Consult the dealer or an experienced radio/ TV technician for help.

OPERATION

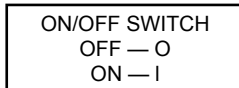
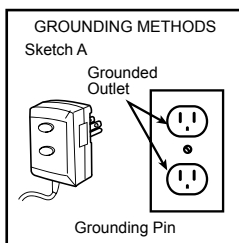
Place the air blower on a steady net surface where children can be kept away. This air blower is for use on a nominal 120-volt circuit and has a grounding plug similar to the plug illustrated in sketch (A). Only connect the product to an outlet having the same configuration as the plug. Do not use an adapter with this product.

KEEP UNIT GROUNDED: Air blower should be grounded. In the event of an electrical short circuit, grounding reduces the risk of electric shock by providing an escape wire for the electric current. This product is equipped with a cord having a grounding wire with an appropriate grounding plug. The plug must be plugged into an outlet that is properly installed and grounded in accordance with all local codes and ordinances.

WARNING: Improper installation of the grounding plug is able to result in a risk of electric shock. When repair or replacement of the cord or plug is required, do not connect the grounding wire to either flat blade terminal.

The wire with insulation having an outer surface that is green with or without yellow stripes is the grounding wire.

CAUTION: Check with a qualified electrician or serviceman when the grounding instructions are not completely understood, or when in doubt as to whether the air blower is properly grounded. Do not modify the plug provided. If it will not fit the outlet, have the proper outlet installed by a qualified electrician. The appliance must be positioned so that the plug is accessible. If the supply cord is damaged, it must be replaced by the manufacture or its service agent or a similarly qualified person in order to avoid a hazard.



PRODUCT DESCRIPTION

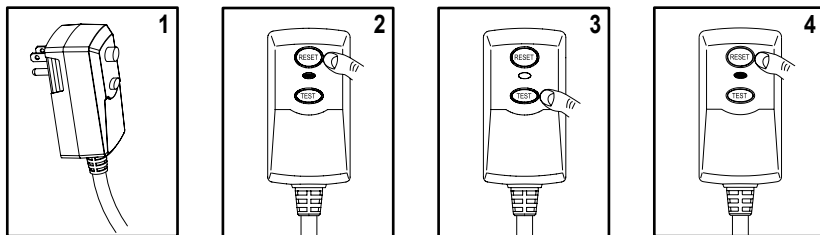
Item	Age	Maximum number of users	Maximum user weight capacity	Individual weight capacity	Combined user weight capacity (Platform)	Maximum fall height	Critical fall height	Water capacity
53346E	5+	5	600 lbs (270 kg)	120 lbs (54 kg)	120 lbs (54 kg)	56" (1.43 m)	68" (1.73 m)	288 gal. (1.089 cbm)
53350E	5+	5	600 lbs (270 kg)	120 lbs (54 kg)	120 lbs (54 kg)	56" (1.43 m)	68" (1.73 m)	386 gal. (1.462 cbm)
53368E	5+	9	1080 lbs (490 kg)	120 lbs (54 kg)	238 lbs (108 kg)	56" (1.43 m)	66.5" (1.69 m)	560 gal. (2.12 cbm)
53370E	5-10	8	960 lbs (436 kg)	120 lbs (54 kg)	120 lbs (54 kg)	56" (1.43 m)	66" (1.67 m)	412 gal. (1.56 cbm)
53380E	5+	6	720 lbs (327 kg)	120 lbs (54 kg)	120 lbs (54 kg)	52" (1.32 m)	68" (1.72 m)	464 gal. (1.756 cbm)
53382E	3-8	5	500 lbs (227 kg)	100 lbs (45 kg)	300 lbs (135 kg)	14" (35 cm)	56" (1.43 m)	298 gal. (1.13 cbm)
53388E	5+	10	1200 lbs (544 kg)	120 lbs (54 kg)	238 lbs (108 kg)	57" (1.45 m)	68" (1.72 m)	631 gal. (2.39 cbm)

Blower Rating: AC110-120V, 60Hz, 3.5A (53382E)

AC110-120V, 60Hz, 4.1A (53346E;53350E;53370E;53380E)

AC110-120V, 60Hz, 5.7A (53368E;53388E)

GFCI TEST



WARNING: Risk of electric shock. The GFCI must be tested before each use.

WARNING: Do not use the blower if the above test fails.

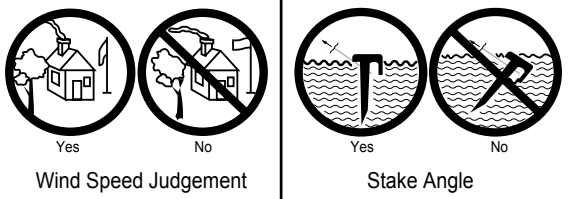
SETUP INSTRUCTIONS



WARNING

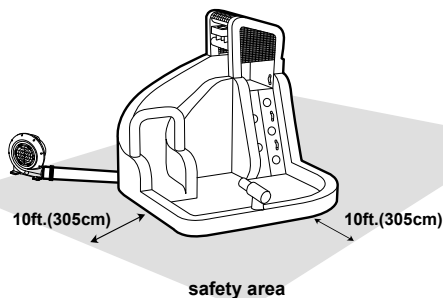
Follow Anchoring Instructions

User must read and follow anchoring instructions to ensure the proper: number of anchors used, soil conditions, and stake installation.



PLACEMENT:

Use on a flat, grassy area only. Do not use on pavement or hard surfaces. Usage area should be free of rocks, bumps, holes, sticks, etc. The water park setup location should have a minimum distance of 10ft (305cm) from any free-standing structures or obstructions. this include: houses, garages, fences, trees, playground equipment, large rocks, etc.



ASSEMBLY

Place on level ground and firm grass or soil to allow proper use of stakes.

Do not set up the inflatable device on a slope or incline.

Stakes are to be driven straight down until the top of the stake is below ground level. Do not drive stakes at an angle.

For best holding strength, drive stakes into hard, dry soil. In loose or wet soil, or both, stake holding strength will be reduced.

Do not use the product if wind speed exceeds 20 mph.

Do not set up in windy or rainy conditions: sudden gust of wind may lift the product off the ground.

Only the blower provided or other manufacturer specified replacement blower should be used for inflation.

Use only with Ground Fault Circuit Interrupter(GFCI) receptacle.

Do not use extension cords with this product and keep the blower and power cord away from water.

Product shall be fully inflated and anchored before use.

ATTENTION: Each anchor bag should be filled to 40 lbs. (18 kg) of water. Each anchor bag must be attached while using the park (If your product is equipped with anchor bag).

After inflation, the blower should run continuously while children are playing.

DRAINING & DEFLATION

IMPORTANT: Drain the water park of all water to prevent mold and mildew. Product should be completely dry before storage. Do not fold and store water park if any moisture remains.

IMPORTANT: All children must exit the water park before deflation or draining.

1. Turn off the garden hose and disconnect it from the tube.
2. Turn off the blower motor and unplug it from the outlet. Move the blower to dry ground if it appears that it will get wet from draining water.
3. Open the water valve and drain the water.
4. Remove stakes and drag water park away from the drained water to a dry area.
5. Re-stake the water park and blower, tie the inflation tube to the blower, then reconnect and power up the blower.
6. Leave the water park inflated until all remaining water has evaporated and the water park is dry.
7. Once water park is completely dry, turn off the blower and unplug it from the outlet.
8. Remove and drain the hose assembly from the Water park. Untie the drawstring from the short outlet tube and allow the water park to fully deflate. Remove the hose assembly and wrap it up with no kinks.

WARNING

- Constant, competent adult supervision of children and other young users is required at all times in front of the device where all parts of play areas can be seen.
- Keep the area around the product clean, and clear of objects, to prevent slips and falls.
- Always check all anchors before and during use.
- To prevent electric shock, do not clean the blower with water.
- Children should not wear loose or baggy clothing, scarves, hoods or clothing with drawstrings or long cords while playing in this product.
- Children must remove helmets, loose clothing, scarves, headgear, shoes and glasses, as well as any sharp or hard objects from their pockets, as they may puncture the bounding surface.
- Separation of larger children from smaller children. Do not allow children to play together who are unevenly matched in weight and height.
- Do not allow users to climb or hang on containment walls.
- Do not allow users to do somersaults or rough play.
- Do not allow food, drink or gum inside unit.
- Children must not slide down head first on their stomach.
- Keep pets away from product.
- Do not attach items to the inflatable device that are not specifically designed for use with the inflatable device, such as, but not limited to, jump ropes, clothesline, pet leashes, cables and chain as they have the potential to cause a strangulation hazard.

MAINTENANCE OF WATER PARK

1. To keep the product clean: wipe the inflatable device using a dry cloth or a cloth dampened with a neutral, non-flammable, non-toxic cleaning and sanitizing solution or pure water.
2. If applicable, remove water and debris from pocket steps after each play cycle.
3. As an outdoor product, the inflatable device is subject to wear and deterioration. Inspect for signs of fabric failure; weak or torn surface must be repaired promptly.

MAINTENANCE OF AIR BLOWER

The source of electrical supply must be disconnected prior to any servicing or cleaning.

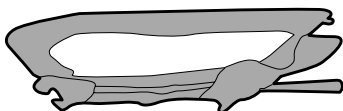
1. Use a dry cloth to gently clean all surfaces.
2. Store in a cool, dry place and out of children's reach.

STORAGE

IMPORTANT:

1. Never store the water park when wet. Allow to dry before folding for storage. Follow all previous instructions each use.
2. Store park in a secure place away from children to prevent suffocation hazards. Never leave either the park or the blower outside when not in use.
3. Please place it the dry and ventilated position where is not sour, not alkali and not corrosive gases. After having used it in outdoors, you should place it in a dry and ventilated room in time. Do not let water into the air-blower.

1



Fold all pieces of the water park toward the center.

NOTE: If bottom surface is still moist, allow it to air dry prior to folding.

2



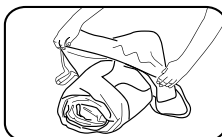
NOTE: Do not place the water spray tubing inside the water park when rolling it up

Roll up the water park tightly and compress the fabric to expel all of the remaining air.

3

Slip the carrying bag over the rolled-up inflatable park. Flip the bag and the park over, close the bag, and store the park and the blower in a dry place.

To extend the life of the water spraying hose assembly, store it in a adequately ventilated area. Do not store them together with the park.



REPAIR PATCH INSTRUCTIONS

Replace defective parts in accordance with the instructions. Please keep for future reference.

1. Deflate the item, clean the area and allow to dry thoroughly.

2. Cut a portion of the patch to the size needed and round the corners. (See Fig.1&2).

3. Apply the repair patch:

Option #1: Using the vinyl patch.

Remove the adhesive backing from the patch material, position the patch over the damaged area and smooth out any bubbles.

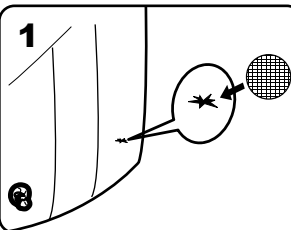
Option #2: Using the fabric patch and the glue (not included).

Apply only the amount of glue(not included) needed to cover the repair site and press patch firmly over the puncture.

4. Allow to sit for 30 minutes before re-inflating.

WARNING: Repair patched must be applied by an adult only. Keep out of children.

1



2

correct



or



incorrect



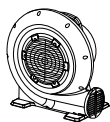
TROUBLESHOOTING

PROBLEM	CAUSE
Motor won't run	<ol style="list-style-type: none"> 1. Switch not turned on. 2. The circuit is opened or it is poor contact. 3. Electric capacity is damaged. 4. Choked up by hard objects.
Motor runs but wheel makes a scraping noise	<ol style="list-style-type: none"> 1. Screws on the vaned wheel are loose. 2. Foreign objects in air-blower.
Motor is unable to run normally	<ol style="list-style-type: none"> 1. The voltage is unstable. 2. Motor is affected with damp. 3. Electric capacity is failure. 4. The impeller is loose.

53346E



001 x 1



002 x 1



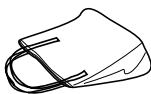
003 x 2



004 x 1



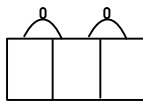
005 x 10



006 x 1

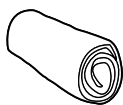


007 x 1

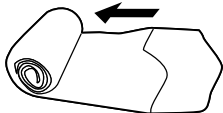


008 x 1

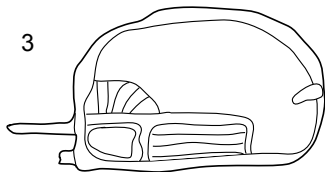
1



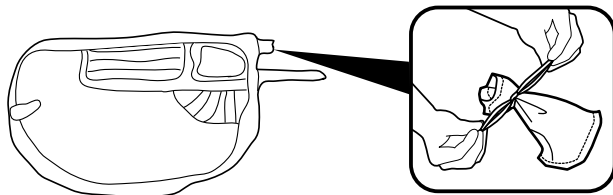
2



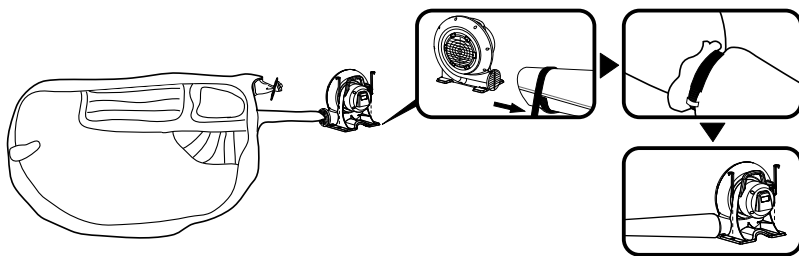
3



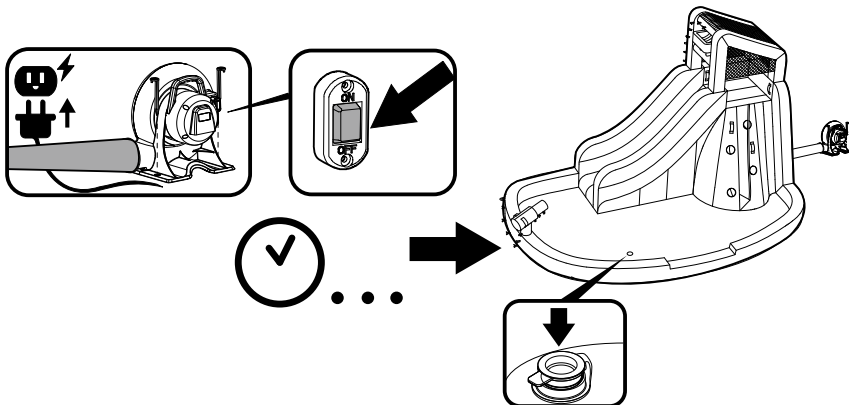
4



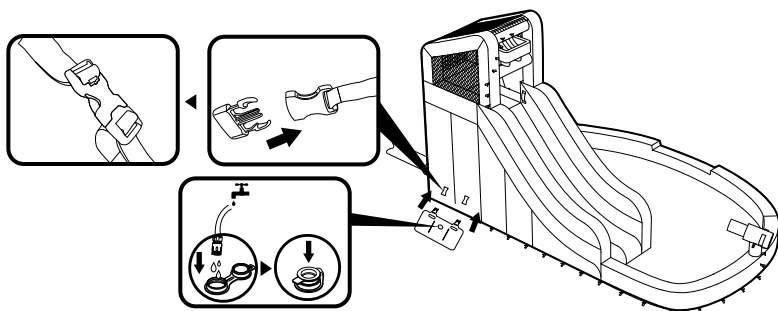
5



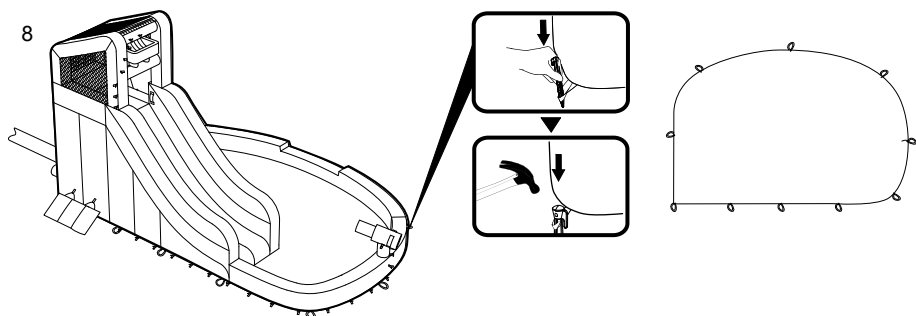
6



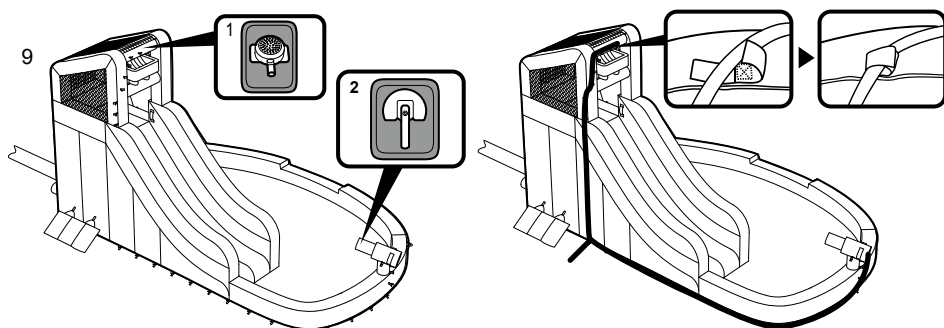
7



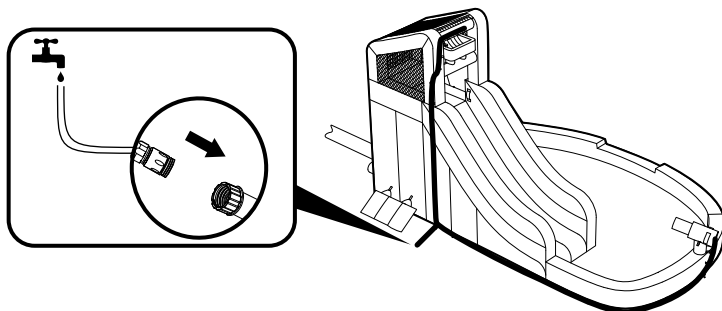
8



9



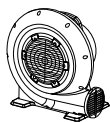
10



53350E



001 x 1



002 x 1



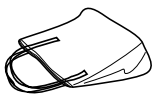
003 x 2



004 x 1



005 x 10

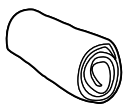


006 x 1

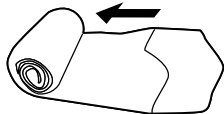


007 x 1

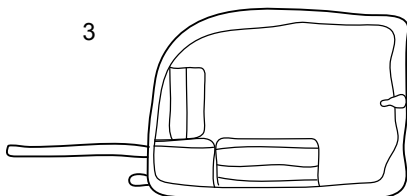
1



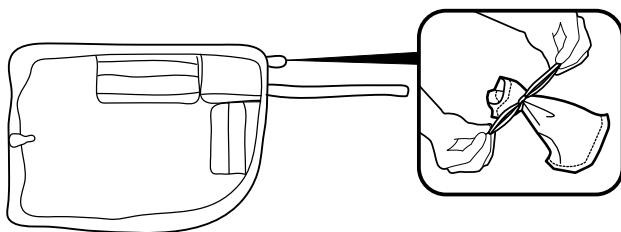
2



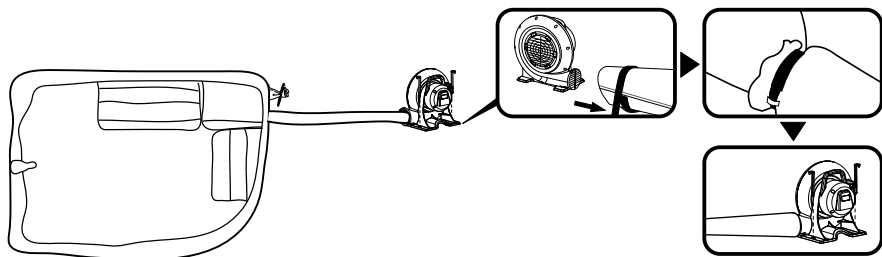
3



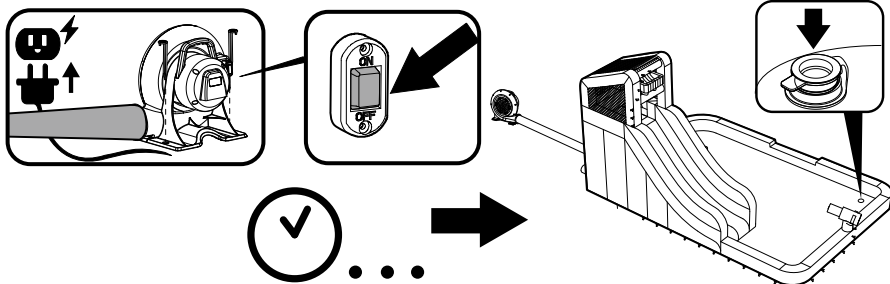
4



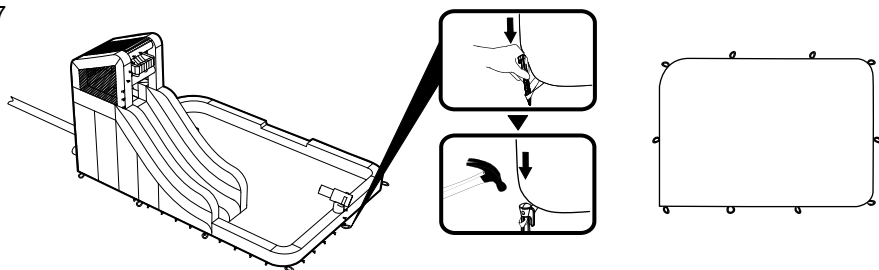
5



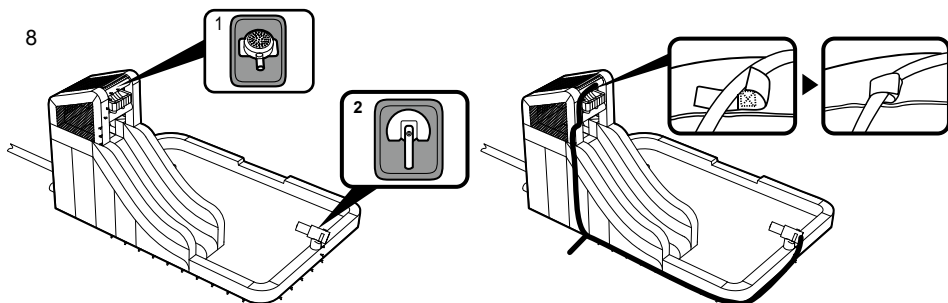
6



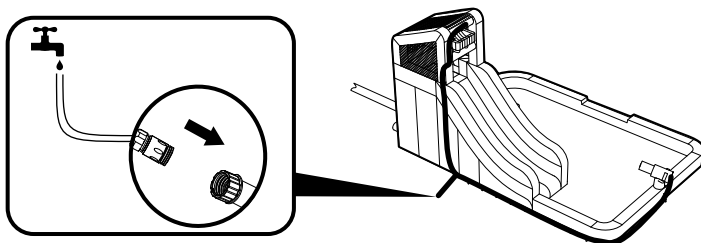
7



8



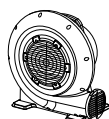
9



53368E



001 x 1



002 x 1



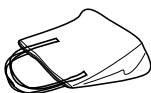
003 x 2



004 x 1



005 x 13



006 x 1

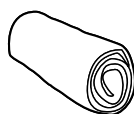


007 x 1

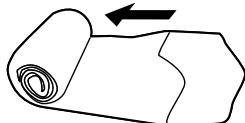


008 x 1

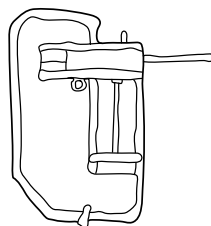
1



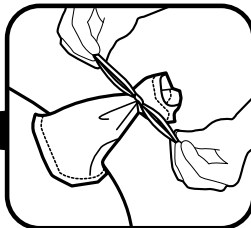
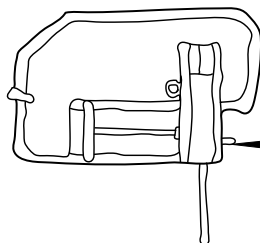
2



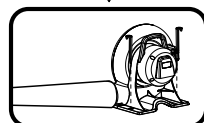
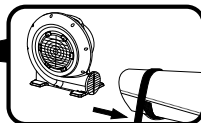
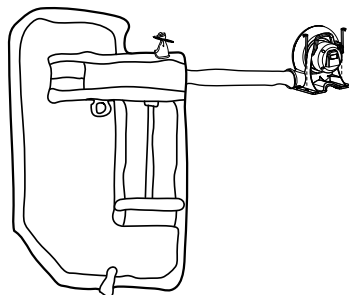
3



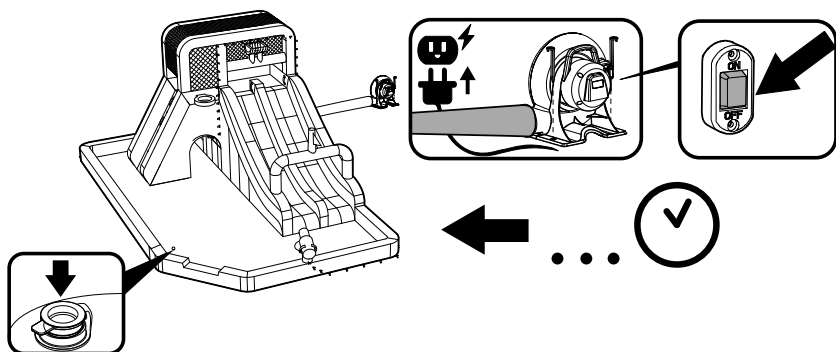
4



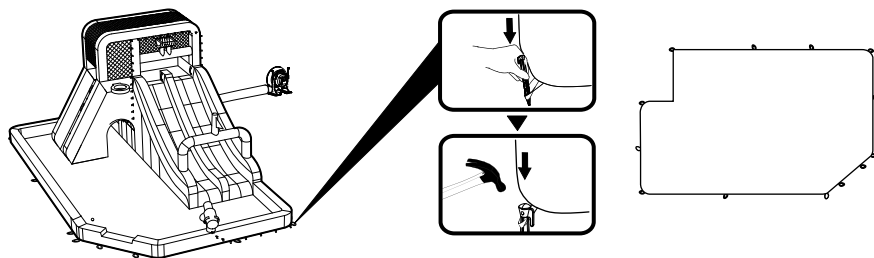
5



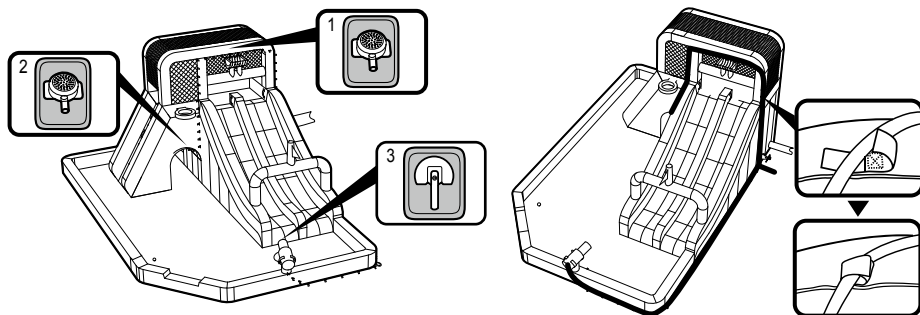
6



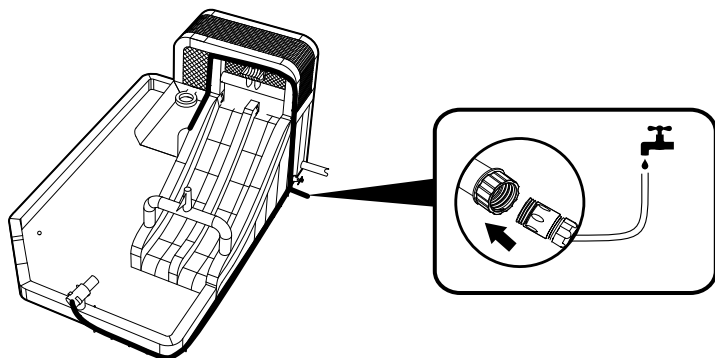
7



8



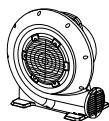
9



53370E



001 x 1



002 x 1



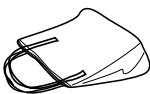
003 x 2



004 x 1



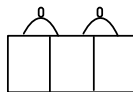
005 x 11



006 x 1

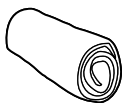


007 x 1

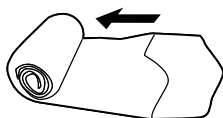


008 x 1

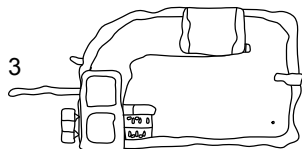
1



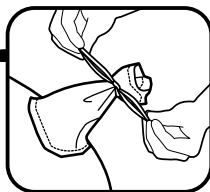
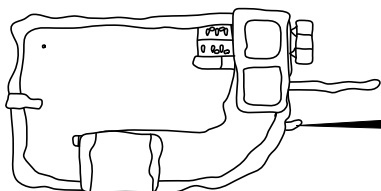
2



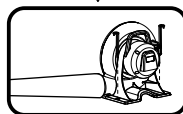
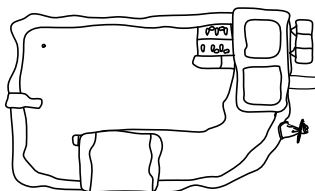
3



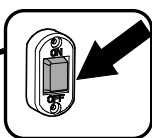
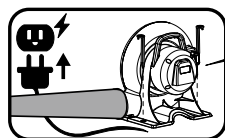
4



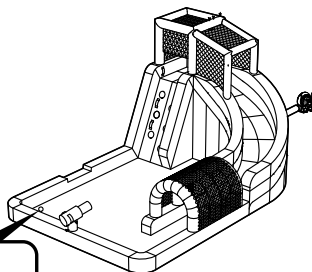
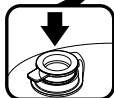
5



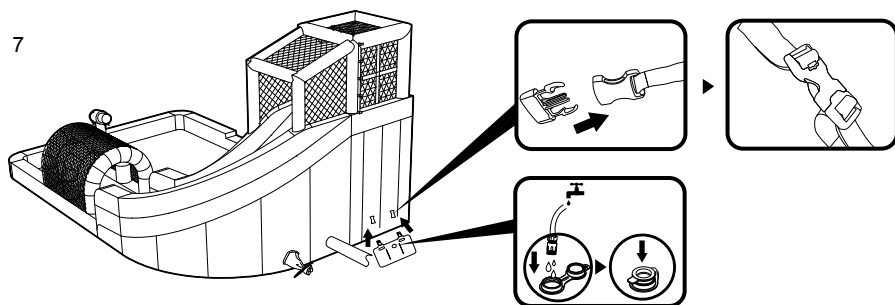
6



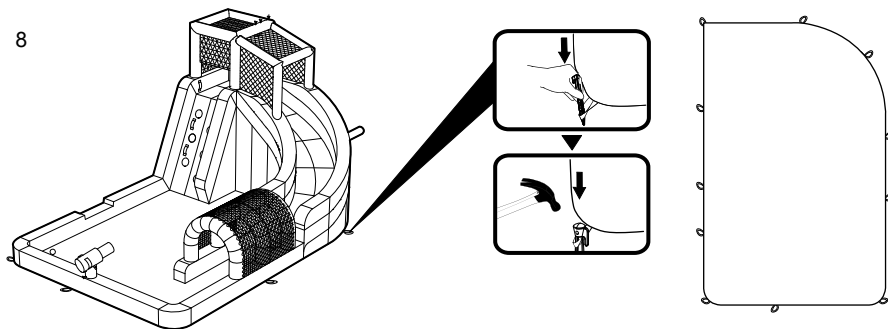
...



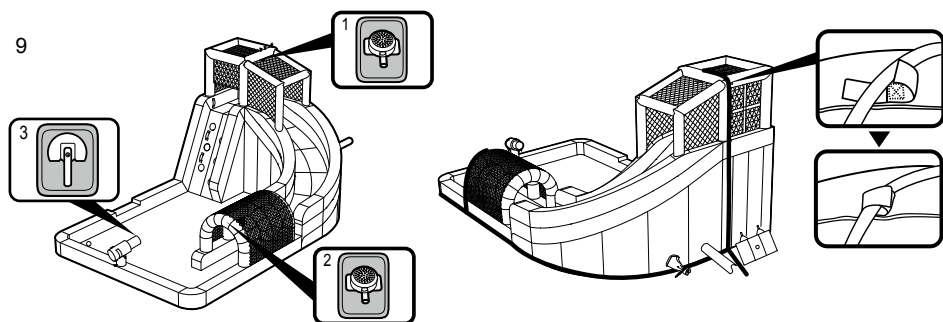
7



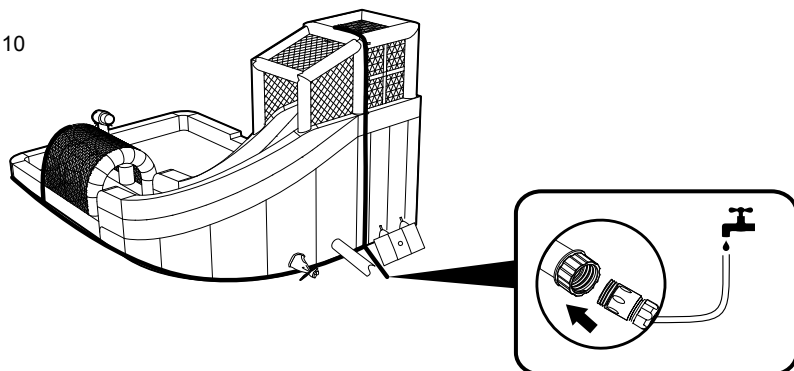
8



9



10



53380E



001 x 1



002 x 1



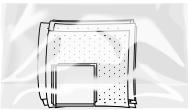
003 x 2



004 x 10



005 x 1

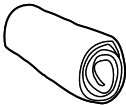


006 x 1



007 x 1

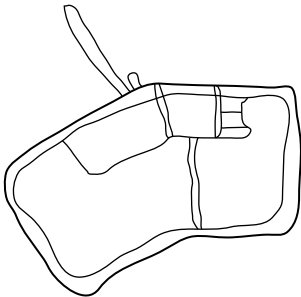
1



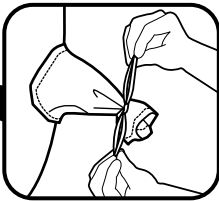
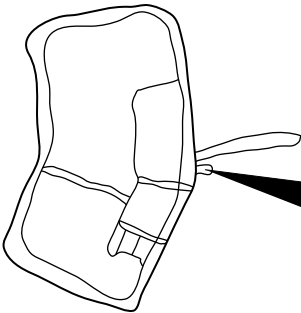
2



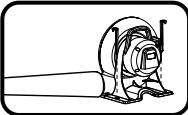
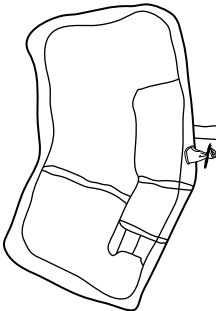
3



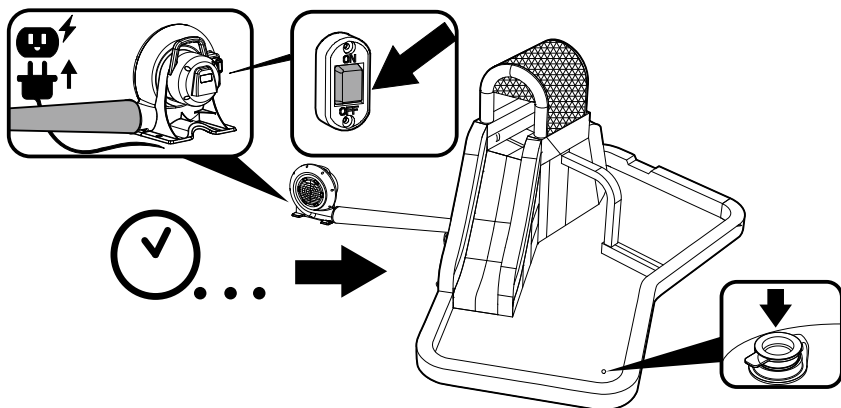
4



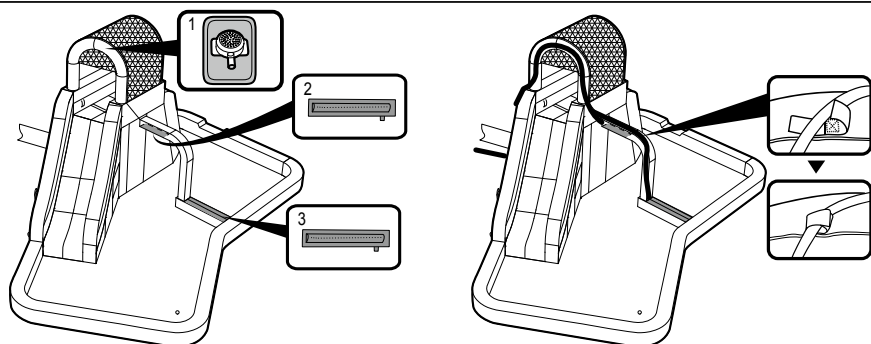
5



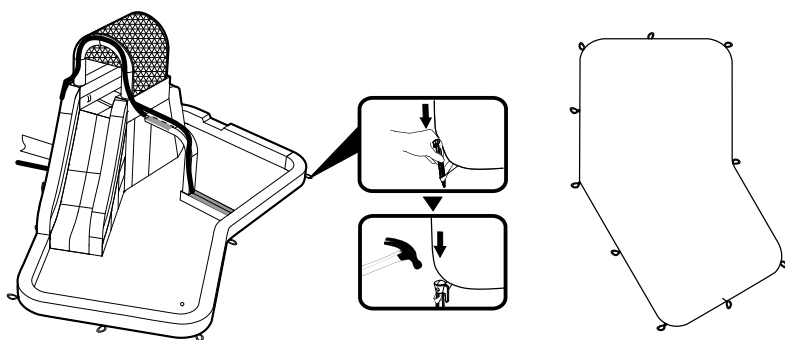
6



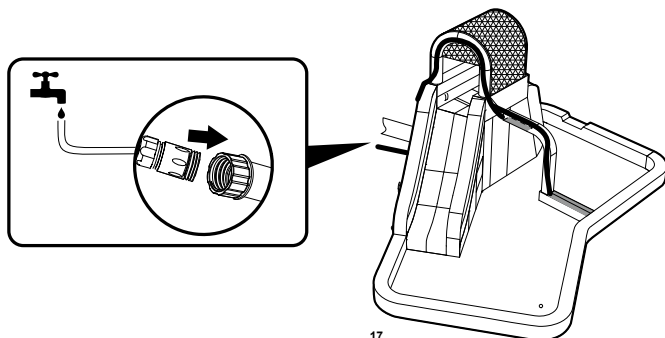
7



8



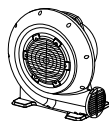
9



53382E



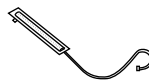
001 x 1



002 x 1



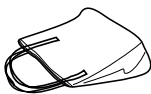
003 x 2



004 x 1



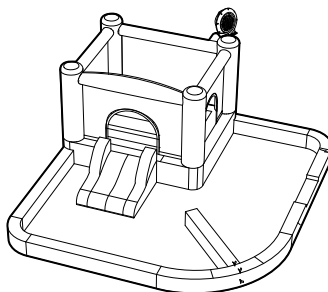
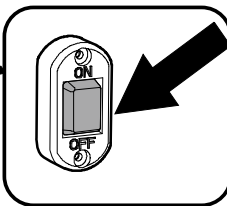
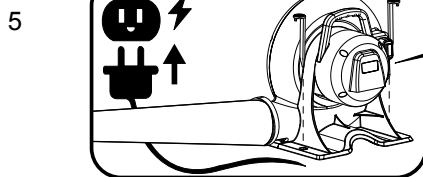
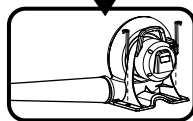
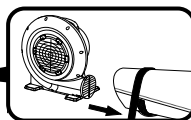
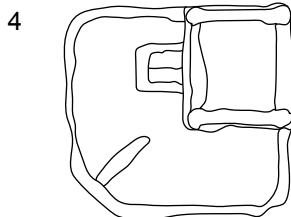
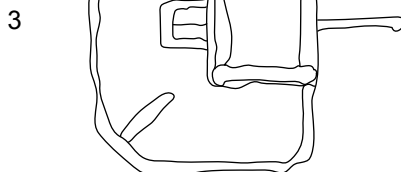
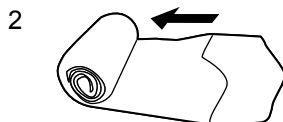
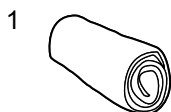
005 x 8



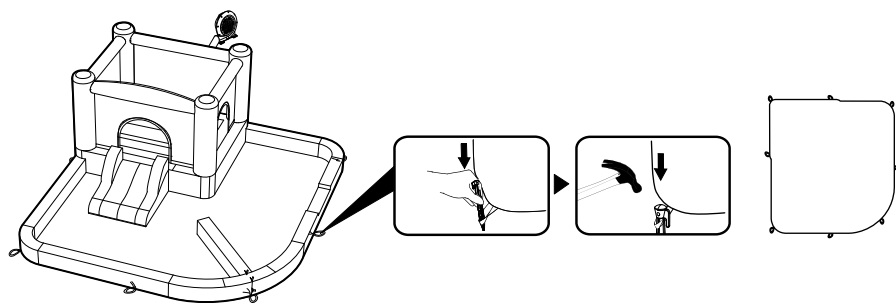
006 x 1



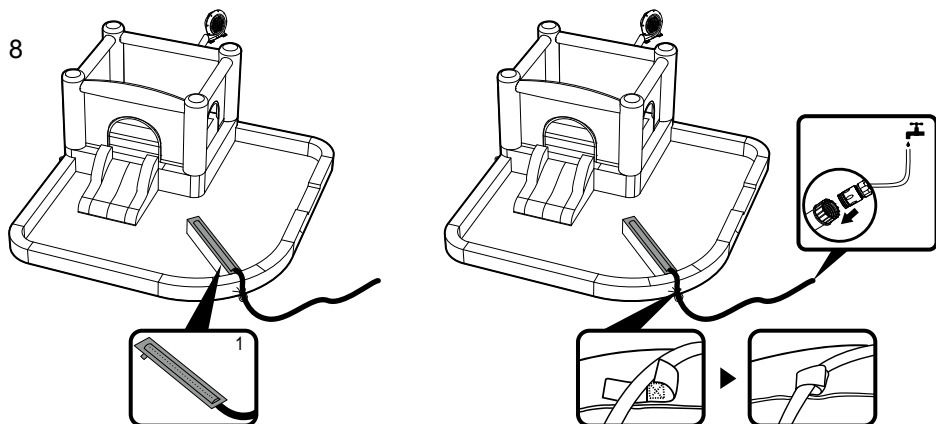
007 x 1



7



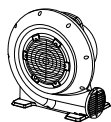
8



53388E



001 x 1



002 x 1



003 x 2



004 x 1



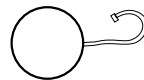
005 x 10



006 x 1

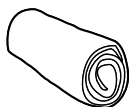


007 x 1

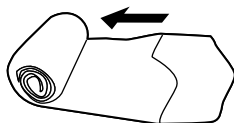


008 x 1

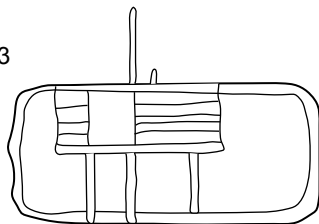
1



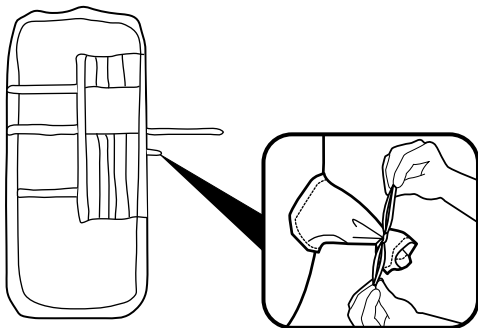
2



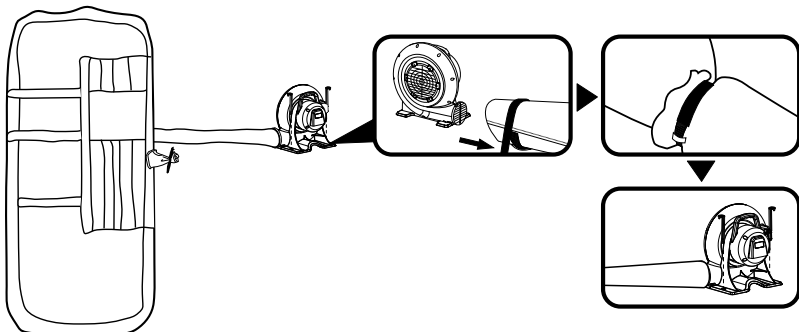
3



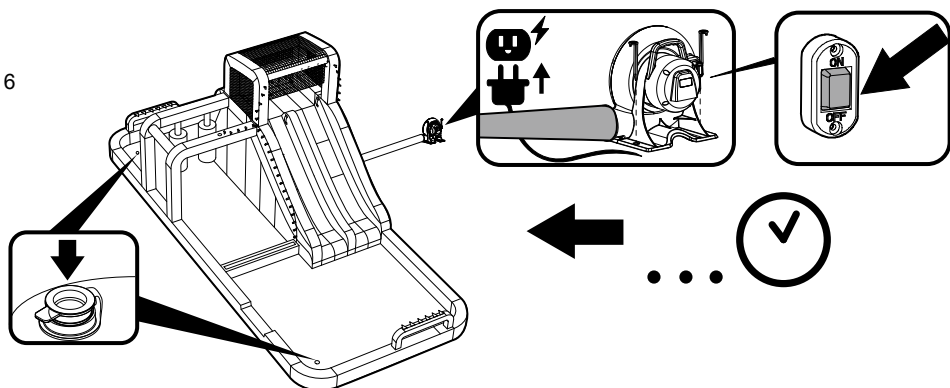
4



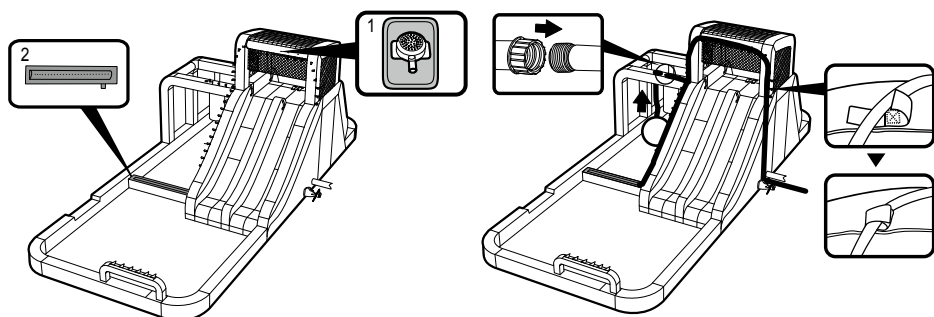
5



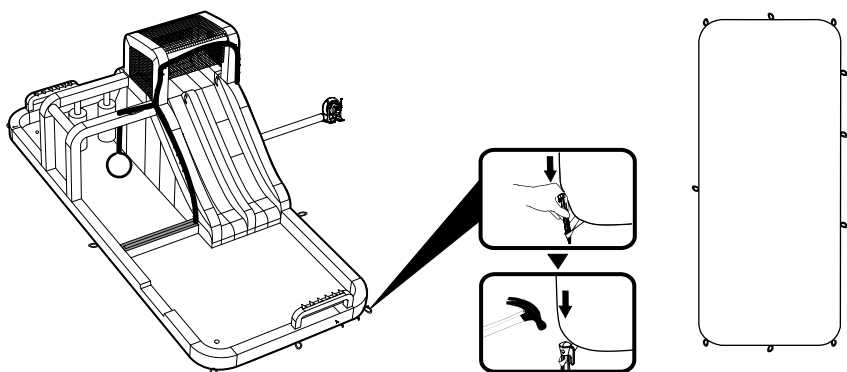
6



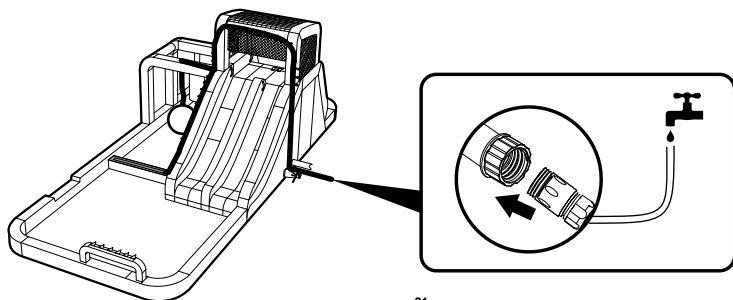
7



8



9





©2021 Bestway Inflatables & Material Corp.

All rights reserved/Tous droits réservés/Todos los derechos reservados/Alle Rechte vorbehalten/Tutti i diritti riservati

Trademarks used in some countries under license from/

Marques utilisées dans certains pays sous la licence de/

Marcas comerciales utilizadas en algunos países bajo la licencia de/

Die Warenzeichen werden in einigen Ländern verwendet unter Lizenz der/

Marchi utilizzati in alcuni paesi concessi in licenza a

Bestway Inflatables & Material Corp., Shanghai, China

Manufactured, distributed and represented in the European Union by/

Fabriqués, distribués et représentés dans l'Union Européenne par/Fabricado, distribuido y representado en la Unión Europea por/

Hergestellt, vertrieben und in der Europäischen Union vertreten von/Prodotto, distribuito e rappresentato nell'Unione Europea da

Bestway (Europe) S.r.l., Via Resistenza, 5, 20098 San Giuliano Milanese (Milano), Italy

Distributed in North America by/Distribués en Amérique du Nord par/Distribuido en Norteamérica por

Bestway (USA) Inc., 3411 E. Harbour Drive, Phoenix, Arizona 85034, United States of America

Tel: +86 21 69135588 (For U.S. and Canada)

Distributed in Latin America by/Distribués en Amérique latine par/Distribuido en Latinoamérica por/Distribuido na América Latina por

Bestway Central & South America Ltda, Salar Ascotan 1282, Parque Enea, Pudahuel, Santiago, Chile

Distributed in Australia & New Zealand by **Bestway Australia Pty Ltd, Unit 2/98-104 Carnarvon St Silverwater, NSW 2128, Australia**

Tel: Australia: (+61) 29 0371 388; New Zealand: 0800 142 101

Distributed in United Kingdom by **Bestway Corp UK Ltd, 8 Wentworth Road, Heathfield Industrial Estate, Newton Abbot, Devon, TQ12 6TL**

Exported by/Exporté par/Exportado por/Exportiert von/Esportato da

Bestway (Hong Kong) International Ltd./Bestway Enterprise Company Limited

Suite 713, 7/Floor, East Wing, Tsim Sha Tsui Centre, 66 Mody Road, Kowloon, Hong Kong

www.bestwaycorp.com