

KastKing Baitcasting Reel Instructional Manual

Congratulations on your purchase of a KastKing Baitcasting Reel. This reel is manufactured with the highest quality components and has been extensively tested to guarantee that your day on the water is more productive. Please take a moment to familiarize yourself with the integrated performance-enhancing features of this reel before use. This will allow you to utilize the reel's settings and even further increase your fishing success. We wish you the best of luck in your future fishing endeavors.

Warranty

Thank you for choosing a KastKing Product!

At KastKing, our mission is to achieve affordable innovation and we strive to provide you great products at the best price. KastKing warrants to the original purchaser that any KastKing products are free from defects in materials or workmanship for at least a period of one (1) year from the date of purchase. KastKing is not responsible for normal wear and tear, for products used commercially or for failures caused by accidents, abuse, alteration, modification, misuse or improper care. There are no other expressed warranties beyond the terms of this limited warranty. In no event shall any implied warranties, including merchantability and fitness for a particular purpose, extend beyond the duration of the expressed warranty contained herein. In no event shall KastKing be liable for incidental or consequential damages.

Some states do not allow limitations on how long an implied warranty lasts or the exclusion of limitation of incidental or consequential damages, so the above limitations or exclusions may not apply to you. This warranty gives you specific rights and you may have other rights which vary from state to state.

For Warranty Claims, please call 516-243-8791 before you ship the damaged product back to KastKing, 425 Oak St, Unit A, Garden City, NY 11530

Beyond-warranty Support

In order for our customers to have full confidence and total peace of mind, KastKing offers the industry first, beyond-warranty support:

1. Request fishing reel or rod parts due to loss or user error damage
2. Request assistance in the set up and use of rods/reel/combos
3. Continue receiving support even after warranty expires
4. Learn tricks about fishing gear maintenance
5. Receive offers only available to current customers

To enjoy the beyond-warranty support, please sign up at the link below:

<https://www.kastking.com/warranty>

Or email your order number and phone number to:

beyond-warranty@kastking.com

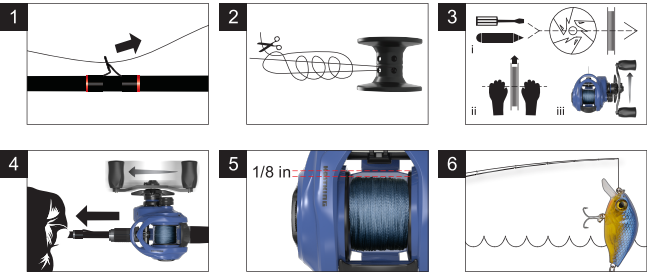
How to Spool a Baitcaster

You will need the following: Fishing Line, Line Cutter, Baitcasting Reel, Pencil/Screwdriver, A Friend or Reel Spooling Station, 15 minutes to spare



Steps:

- 1 Begin by threading the line through the line guides of the rod and the line guide of the reel itself. Be careful not to miss any line guides as this can put added stress on the fishing line.
- 2 Attach the line to the fishing reel with an arbor knot.
- 3 To do the next part, you'll need an extra hand. Put a pencil or screwdriver through the eye of the fishing line spool and have you friend hold both sides. Note: It is important when spooling a baitcasting reel that the line comes off the spool in the same direction that it goes on the reel. If you don't have a friend who can give you an extra hand you can always use a Reel Spooling Station.
- 4 Next, begin to reel in the line. As you begin to retrieve, use your opposite index finger and thumb to put some tension on the line. This will help the line to go on straight and tight.
- 5 Fill the spool until it is 1/8 inch from the top of the spool
- 6 Tie on your favorite fishing lure and start fishing!



Please Note: If using braided fishing line it is a best practice to use a **monofilament line** backing or wrap one layer of electrical tape around the spool to prevent line slippage.

Important tip: In order to prevent future backlashes it is important to put tension on the line when reeling in the new line. To make sure your fishing line is going on correctly every once and a while stop retrieving and look at your line. Do you see line twist? Is the line going on tight or does it seem loose? Does it look like the line wants to come off the spool? If not, you can continue. If so, stop and fix the problem immediately.

How to Set the Drag on a Baitcaster:

Things You'll Need:



Step 1

Choose your preferred type of line you'd like to have on your baitcaster. Pay special attention to the pound test of the line. Before setting your drag, you must know the breaking strength of the line you have chosen to use. When adjusting the drag on your reel, the maximum pull should be approximately 25% to 30% of the line's breaking strength before your drag begins to slip. Therefore, if you put 30 lb. test braid on your reel, the drag system should allow the line to come off the reel with 7.5 to 10 pounds of pulling effort.



Step 2

Tie a loop in the opposite end of where you hold your rod and attach your fishing line to the hook of a scale. Have the person assisting you to hold the scale approx. 10 feet away from you while you continue to hold the rod and reel. Begin by loosening the drag, using the metal star knob located at the base of the reel handle. Steadily tighten the drag while pulling on the line from the scale while your helper observes the scale needle. You can alternately pull against the scale and then reel down the slack to keep the line tight. (It's important to maintain good tension while doing this to assure proper setup.) Repeat until the scale reads the desired drag setting.



Step 3

If you don't have anyone to assist you with setting your drag, you can use a stationary object to help. You'll need something solid like a fence or vehicle. (If you're creative enough, you can find many other objects to help you.) Tie a hook to the end of your fishing line and hook it to a stationary object of your choice. Pull against the stationary object while fine-tuning the drag of your baitcasting reel until it becomes difficult to pull line from the reel, but not difficult enough that your line breaks. This method is not as accurate as using a scale, but it works.



- 1 You can set the drag accurately by yourself if you have a digital scale that you can read when you hang it from something solid.
- 2 Check your drag before every trip. Drag washers lose their pressure over time, affecting your drag setting.

How to Spool a Baitcaster

How to Adjust the Brakes and Spool Tension:

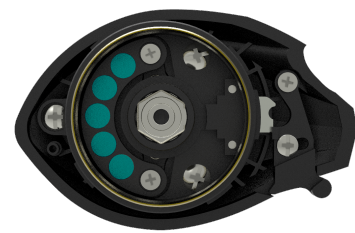
There are 3 basic types of casting reel brake systems: centrifugal, magnetic, and spool tension adjustment.

Centrifugal systems work best at the start of a cast to reduce backlash problems. Magnetic brake reels use configurations of magnets to slow down the spool. There does not need to be steel in your reel for your magnets to work. It works on a physics principle called the "eddy effect." Magnetic brakes work best towards the end of the cast. Then we have the dual brake reels that have both centrifugal brakes and magnets. All 3 of these type systems need to be set up differently from each other. The one common thing that all of these systems have is that they work in conjunction with a spool tension cap or as some call it, a cast control cap. Some older reels used to refer to it as a spool brake.



pressure on the spool shaft and tension disks. That leads to premature wear of those parts and you will notice over time that you must set the cap tighter and tighter to get the same tension. That's because you are wearing those parts out or even damaging the cap or side cover by running too much tension.

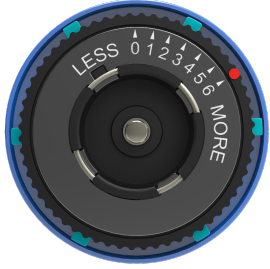
To adjust your spool tension, set your magnetic brake, if so equipped, to zero or off. That way the fall rate of the bait is not being slowed by the magnets and you will get the tension setting correct. Hold your rod at the 10 o'clock position with the bait you are using tied on the end of your line. Adjust the tension so the bait falls to the ground slowly. Readjust for different weight baits.



CENTRIFUGAL BRAKE ADJUSTMENT:

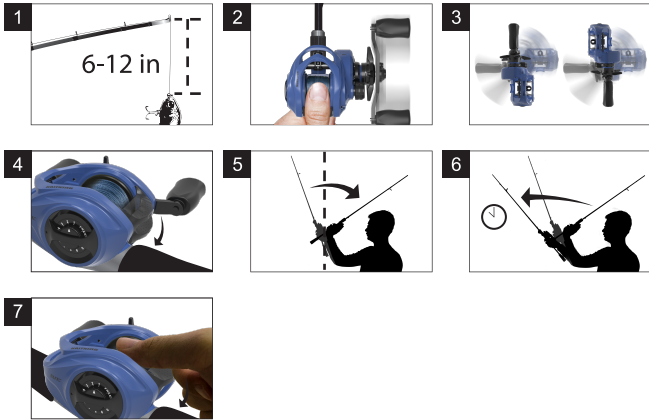
With most reels you need to open a side cover or open the reel to get to the brake adjustment tabs. Loosen the spool tension cap before you open the reel. Remember, the spool tension cap is squeezing the spool shaft under pressure. If you don't loosen the cap before you open the reel, when you close the reel, you will put the spool in a bind and possibly damage several parts. So just remember, the first step to setting centrifugal brake pins is to loosen the spool tension cap, then open the reel, set the pins, close the reel and reset the tension to a slow fall of the bait. When you have a reel set this way, if you still get backlash, set more brake pins or higher magnetic settings, not more spool tension.

As you get better at casting, you may find that you can cast with less tension than the max setting. That's great! What's not great is when you try to use less brakes and more tension to be able to use less brakes. There is no shame in using brakes, they are there for a reason. There should also not be any pride in being able to cast a reel with only 1 or 2 brake pins active. If you can set the spool tension loose and still cast with just 1 or 2 brake tabs, then you have a very educated thumb. Good for you! Although, most users that set the reels with just a few brake tabs are compensating with extra tension and that wears out parts and makes it more difficult to cast than if they just used more brake tabs and less tension.



How to Cast a Baitcaster

- 1 Reel in the line. Reel the line in until your bait or lure is 6 to 12 inches (15 to 30 centimeters) from the rod tip. If you have a sinker or bobber attached to the line, it should be 6 to 12 inches from the rod tip instead.
- 2 Hold the reel properly. Grip the rod behind the reel with your thumb resting over the reel spool. Baitcasting rods are designed the same as spin casting rods, and as with spin casting rods, most fishermen cast with the same hand they retrieve with, so if you prefer to hold the rod behind the reel when you retrieve, you'll need to switch hands when you cast. (*Tip: You can also rest your thumb at a slight angle on the spool instead of pressing the very flat of it on the line. This will give you more control over the stream of the line during the cast.)
- 3 Turn the rod so the reel handles point up. As with spin casting gear, this lets you use your wrist when you cast. If you cast with your opposite hand, the handles should point down.
- 4 Press the reel spool release button. Baitcasting reels made since the 1970s have a mechanism to disengage the reel spool from the handles so they don't turn during the cast, allowing for longer casts. Most models today feature a release bar behind the spool that you press with your thumb when you rest it on the reel spool.
- 5 Bend your casting arm. You need to bend your casting arm at the elbow so that the crook of your arm begins to approach a right angle. As you do, raise your rod until its tip goes slightly past vertical. This will give you the correct positioning to send the line out.
- 6 Sweep the rod forward until it reaches eye level. This is about 30 degrees above horizontal, or the "10 o'clock" position. As you do so, lift your thumb off the reel spool enough so that the weight of your bait or lure pulls line off the spool as it is propelled toward the target. *If you're casting with a long-handled baitcasting rod of the kind used in saltwater fishing, you'll want to use your opposite hand as support reference from which to pivot the rod as you cast.
- 7 Press down on the reel spool with your thumb to stop the bait when it reaches the target. However, not applying your thumb soon enough leads to the spool continuing to turn after your bait hits the water. Essentially creating an overrun, commonly referred to as a "birds nest", that you'll have to straighten out before you can retrieve your lure.



How to Clean a Baitcaster

Things You'll Need:

Screwdriver, clean, lint-free cloth, soapy water, fresh water, toothbrush, towel for drying, reel oil, reel grease.



Always work on a clean, uncluttered surface.

Step 1

To determine if your baitcaster needs to be oiled, you have to test it. This can be done by flicking your finger on the reel to check how freely it spins. If it turns slower than normal with a single flick, it needs oil.

Step 2

Clean your baitcaster thoroughly before oiling. This can be done by washing the exterior with a clean cloth and soapy water, applied using a toothbrush to remove any particles of dirt or debris that are not easily wiped away. Rinse with fresh water and dry thoroughly.

Step 3

Unscrew the retainer cap on your reel and take the spool out.

Step 4

Clean the spool shaft with a toothbrush to remove any debris, old oil or other lubricants.

Step 5

Apply reel grease to the shaft. Use sparingly. Add a drop of gear oil to each bearing every 6 months or as needed to maintain adequate lubrication. Replace the retainer cap. Lightly coat the exterior of your baitcaster with oil to prevent corrosion.

*Precautions to take:

Less lubricant is always better. If you are unsure of how much to use, apply only a little. You can always add more later. Too much lubricant will decrease performance of your baitcaster and may damage it if excessive.

