



TURBO JETTS™ & TURBO JETTS™ DLX ELECTRIC HEEL WHEELS



OWNER'S MANUAL

**Read and understand this entire manual before allowing child to use this product! For assistance contact Razor.
DO NOT RETURN TO STORE.**

NOTE: Manual illustrations are for demonstration purposes only.
Illustrations may not reflect exact appearance of actual product.
Specifications subject to change without notice.

**Please have your product along with the 19 character product I.D. code with you
before contacting Razor for warranty assistance and/or replacement parts.**

Product I.D. Code: _____ - _____ - _____

CONTENTS

Safety Warnings	1-2
Before You Begin.....	3
Assembly and Set-Up.....	4-5
Charging the Battery.....	6
Pre-Ride Checklist.....	6

Usage	7
Repair and Maintenance.....	8-10
Troubleshooting Guide	11
Razor Turbo Jetts Electric Heel Wheels Parts	12-13
Warranty and Contact Information	15

SAFETY WARNINGS

⚠ WARNING: Riding Razor Turbo Jetts Electric Heel Wheels does present potential risks and caution is required. Like any riding product, Razor Turbo Jetts Electric Heel Wheels have inherent hazards associated with their use (for example, falling or riding it into a hazardous situation). Like any riding product, Razor Turbo Jetts Electric Heel Wheels can and are intended to move and it is therefore, of course, possible to lose control or otherwise get into dangerous situations. Both children, and adults responsible for supervising them, must recognize that if such things occur, a rider can be seriously injured or die even when using safety equipment and other precautions. **RIDE AT YOUR OWN RISK AND USE COMMON SENSE.**

⚠ WARNING: PARENTAL AND ADULT RESPONSIBILITY AND SUPERVISION IS NECESSARY: Because products, like Razor Turbo Jetts Electric Heel Wheels, can and do present potential hazards plainly associated with their use, it is well recognized THE NEED FOR EXERCISE OF PARENTAL RESPONSIBILITY IN SELECTING RIDING PRODUCTS APPROPRIATE TO THE AGE OF A CHILD, OR PARENTAL SUPERVISION IN SITUATIONS IN WHICH CHILDREN OF VARIOUS AGES MAY HAVE ACCESS TO THE SAME RIDING PRODUCTS, IS IMPORTANT. Not every product is appropriate for every age or size of child, and different age recommendations are found within categories of product which are intended to reflect the nature of the hazards and the expected mental or physical ability, or both, of a child to cope with the hazards.

⚠ WARNING: NOT FOR RIDERS UNDER AGE 9 OR HEAVIER THAN 176 LB (80 KG). DO NOT EXCEED THE WEIGHT LIMIT OF 176 lb (80 kg) – including backpacks and other items that might be carried. Exceeding the weight limit could injure the rider and damage the Razor Turbo Jetts Electric Heel Wheels. Rider weight alone also does not necessarily mean a person's size is appropriate to fit or maintain control of the Razor Turbo Jetts Electric Heel Wheels. Keep this product away from small children and remember that this product is intended for use only by persons who are, at a minimum, completely comfortable and competent while operating the product.

Razor recommends that children under the age of 9 not be permitted to use this product. This recommendation is based not just on age or weight or height; it reflects consideration of expected maturity and skills as well as physical size. The recommended rider age of 9 years or older is only an estimate and can be affected by the rider's size, weight, or skills – not every rider 9 years old or older will be suited to the product. Certainly, any rider unable to fit comfortably on the Razor Turbo Jetts Electric Heel Wheels should not attempt to ride them, but a **parent's decision to allow his or her child to ride this product should be based on the child's maturity, skill, and ability to follow rules. Razor emphasizes that adults are strongly advised not to disregard Razor's recommendations or permit younger children to ride the Razor Turbo Jetts Electric Heel Wheels.**

Keep this product away from small children and remember that it is intended for use only by persons who are, at a minimum, completely comfortable and competent while operating.

Persons with any mental or physical conditions that may make them susceptible to injury, impair their physical dexterity or mental capabilities to recognize, understand, and follow safety instructions and to be able to understand the hazards inherent in the use of any ride-on product, should not use or be permitted to use products inappropriate for their abilities. Persons with heart conditions, head, back or neck ailments (or prior surgeries to these areas of the body), or pregnant women, should be cautioned not to operate such products.

DO NOT EXCEED THE WEIGHT LIMIT OF 176 lb (80 kg). Rider weight does not necessarily mean a person's size is appropriate to fit or maintain control of the Razor Turbo Jetts Electric Heel Wheels.

CHECK AND MAINTAIN PRODUCT CONDITIONS

Before use, check to confirm that covers and guards are in place and in serviceable condition. Check that the wheels are free of flat spots from wear. The product should be maintained and repaired in accordance with the manufacturer's specifications, using only the manufacturer's authorized replacement parts, and should not be modified from the manufacturer's original design and configuration.

ACCEPTABLE RIDING PRACTICES AND CONDITIONS

Always check and obey any local laws or regulations which may affect the locations where the Razor Turbo Jetts Electric Heel Wheels may be used. Keep safely away from cars and motor vehicle traffic at all times. Only use where allowed and with caution.

Do not activate the motor of the Razor Turbo Jetts Electric Heel Wheels unless you are in a safe, outdoor environment suitable for riding. Razor Turbo Jetts Electric Heel Wheels **must be moving at least 3 mph (5 km/h) with the drive wheel engaged with the ground before the motor will start.** To push/kick start the Razor Turbo Jetts Electric Heel Wheels before engaging motor, it is recommended that the rider place the motorized side on the forward foot and push start using the front of the rear foot (see page 7).

The normal powered top speed of this product will be approximately 10 mph (16 km/h), which can be affected by conditions, such as rider weight, inclines and battery charge level. Avoid excessive speeds that can be associated with downhill rides.

Ride defensively. Watch out for potential obstacles that could catch your wheel or force you to swerve suddenly or lose control. Be careful to avoid pedestrians, skaters, skateboards, scooters, bikes, children or animals who may enter your path, and respect the rights and property of others.

The Razor Turbo Jetts Electric Heel Wheels is intended for use on flat, dry surfaces, such as pavement or level ground, without loose debris, such as sand, leaves, rocks or gravel. Wet, slick, bumpy, uneven or rough surfaces may impair traction and contribute to possible accidents. Do not ride your product in mud, ice, puddles or water. Watch out for potential obstacles that could catch your wheel or force you to swerve suddenly or lose control. Avoid sharp bumps, drainage grates, and sudden surface changes.

Do not attempt or do stunts or tricks. The Razor Turbo Jetts Electric Heel Wheels are not made to withstand abuse from misuse, such as jumping, curb grinding or any other type of stunts. Racing, stunt riding, or other maneuvers also enhance risk of loss of control, or may cause uncontrolled rider actions or reactions.

Never allow more than one person at a time to ride the product.

Do not ride at night or when visibility is limited.

Never use near steps or swimming pools.

Do not allow hands, feet, hair, body parts, clothing, or similar articles to come in contact with moving parts or wheels while the motor is engaged.

Do not touch the electric motor or wheels on your product when in use (or after using) as they can become very hot.

Never use headphones or a cell phone to talk or text when riding.

SAFETY WARNINGS

Never hitch a ride with a vehicle.

Do not ride your product in wet or icy weather and never immerse in water, as the electrical and drive components could be damaged by water or create other possibly unsafe conditions. Never risk damaging surfaces, such as carpet or flooring, by use of a Razor Turbo Jetts Electric Heel Wheels indoors.

PROPER RIDING ATTIRE

Always wear proper protective equipment, such as an approved safety helmet (with chin strap securely buckled), elbow pads, kneepads and wrist guards. A helmet may be legally required by local law or regulation in your area. A long-sleeved shirt, long pants, and gloves are recommended. Always wear athletic shoes (lace-up shoes with rubber soles) and keep shoelaces tied and out of the way of the wheels and motor. Never ride barefooted or in sandals.

USING THE CHARGER

The charger supplied with the product should be regularly examined for damage to the cord, plug, enclosure and other parts. In the event of such damage, the product must not be charged until the charger has been repaired or replaced.

Use only with the recommended charger.

Use caution when charging.

The charger is not a toy. Charger should be operated by an adult.

Do not operate charger near flammable materials.

Unplug charger and disconnect from product when not in use.

Always disconnect from the charger prior to wiping down and cleaning your product with damp cloth.

FAILURE TO USE COMMON SENSE AND HEED THE ABOVE WARNINGS FURTHER INCREASES RISK OF SERIOUS INJURY. USE AT YOUR OWN RISK AND WITH APPROPRIATE AND SERIOUS ATTENTION TO SAFE OPERATION. USE CAUTION.

BEFORE YOU BEGIN

Remove contents from box. Remove the separators that protect the components from damage during shipping. Inspect the contents of the box for scratches, or dents that may have occurred during shipping. Because the Razor Turbo Jetts Electric Heel Wheels are assembled and packed at the factory, there should not be any problems, even if the box has a few scars or dents.

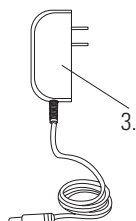
MAKE SURE POWER SWITCH IS TURNED "OFF" AND BATTERY IS REMOVED BEFORE CONDUCTING ANY ASSEMBLY OR MAINTENANCE PROCEDURES.

Estimated Adjustment and Set-Up Time

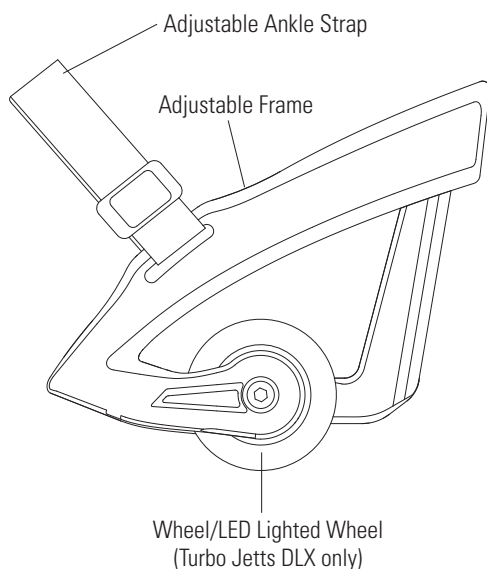
Allow up to 5 minutes for set up & adjustment, not including initial charge time.

Allow up to 3 hours for charge (see page 6 for charging information).

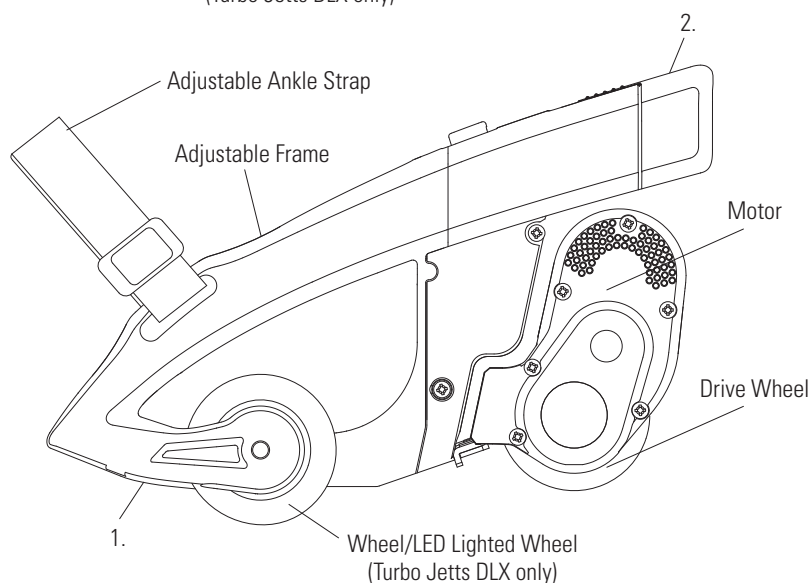
Charger
(Note: Charger design may vary from one shown)



Non-Motorized Side



Motorized Side



WARNING:

DO NOT USE NON-RAZOR PRODUCTS WITH YOUR RAZOR TURBO JETTS ELECTRIC HEEL WHEELS. The Razor Turbo Jetts Electric Heel Wheels have been built to certain Razor design specifications. The original equipment supplied at the time of sale was selected on the basis of its compatibility with the frame and all other parts. Certain aftermarket products may not be compatible and will void the warranty.

Note: Razor Turbo Jetts Electric Heel Wheels must be moving at least 3 mph (5 km/h) with the drive wheel engaged with the ground before the motor will start.

Product ID Locations:

(See locations to the left)

1. Inside of Motorized Side Of Turbo Jetts. (Not Shown)
2. Battery
3. Charger
4. UPC Side of Box (Not Shown)

Box Contents:

- Razor Turbo Jetts Electric Heel Wheels
- Charger
- Owner's Manual
- Rubber Heel Insert

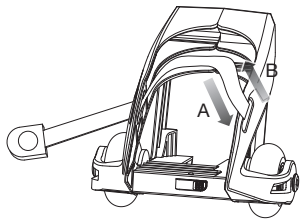
Need Help? Visit our website for replacement parts, product support, a list of authorized service centers in the US and customer service contact information at www.razor.com. Please have the product I.D. code (located on the white label of your product) available for better assistance. Additional Customer Service contact information is listed at the back of this manual.

ASSEMBLY AND SET-UP

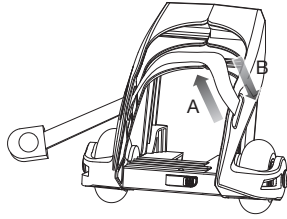
□ Adjusting the Turbo Jetts

⚠ WARNING: Failure to properly adjust the Turbo Jetts may cause the user to lose control and fall.

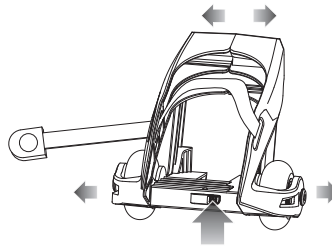
Non-Motorized Side



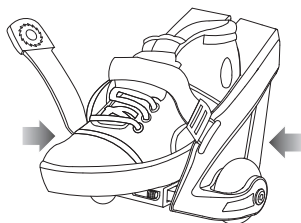
1 To make strap longer: Pull the inner strap first (A), then the outer strap (B).



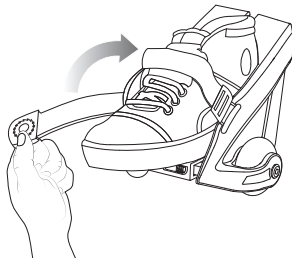
2 To make strap shorter: Pull the outer strap first (B), then the inner strap (A).



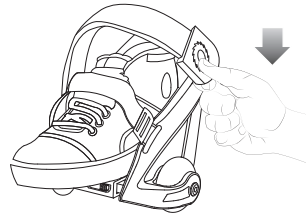
3 Press the button and pull the frame to its maximum width.



4 Place foot in Turbo Jetts and push the frame from both sides until it clicks into place snugly fitting width of shoe.



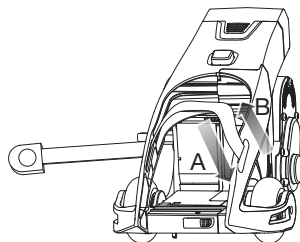
5 Center strap pad and pull strap snug.



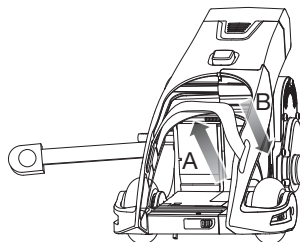
6 Pull tab down to secure the strap. Align and press together hook and pile sides of the strap. Make sure it is completely secure.

Note: Adjustment must be done while wearing recommended appropriate footwear.

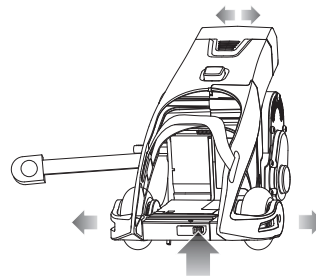
Motorized Side



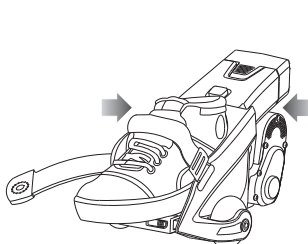
1 To make strap longer: Pull the inner strap first (A), then the outer strap (B).



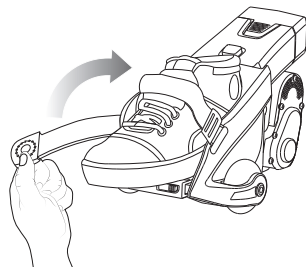
2 To make strap shorter: Pull the outer strap first (B), then the inner strap (A).



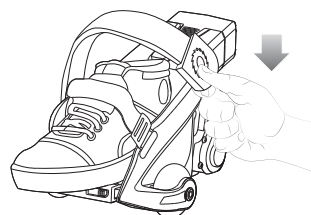
3 Press the button and pull the frame to its maximum width.



4 Place foot in Turbo Jetts and push the frame from both sides until it clicks into place snugly fitting width of shoe.



5 Follow the direction of the arrow to insert foot. Place foot in Turbo Jetts and push the frame from both sides until it clicks into place snugly fitting width of shoe.

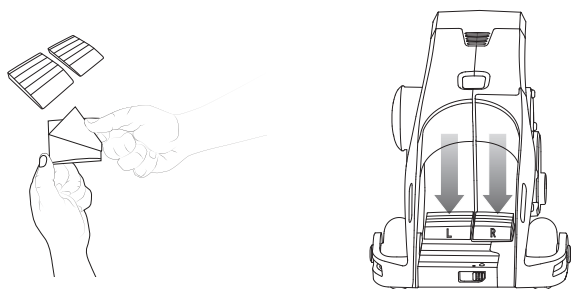


6 Pull tab down to secure the strap. Align and press together hook and pile sides of the strap. Make sure it is completely secure.

Note: Adjustment must be done while wearing recommended appropriate footwear.

ASSEMBLY AND SET-UP

▣ Adding Rubber Heel Insert

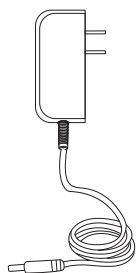


Peel the back of the adhesive and place in the heel area of the frame. Use the rubber heel inserts to customize the fit between the frame and the shoe. The insert can also help adjust the activation and ride angle.

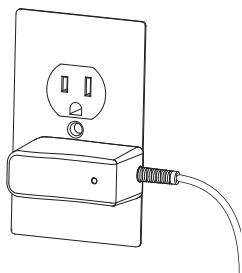
CHARGING THE BATTERY

Your Razor Turbo Jetts Electric Heel Wheels may not have a fully charged battery; therefore you must charge the battery prior to use. Be sure to charge the battery in a clean, dry location away from direct sunlight, flames or sparks.

- Initial charge time: 3 hours.
- Recharge time: up to 3 hours, even if the light turns green. Recommended maximum charging time is 24 hours.
- Always charge the battery immediately after riding.
- Fully charge battery before storing for extended periods of time.
- Unplug charger from the wall outlet when not in use.
- Failure to recharge battery periodically may result in a battery that will not accept a charge.
- Make sure the power button is turned **OFF** when product is not in use. If the power button is left on for an extended period of time, the battery may reach a stage at which it will no longer hold a charge.
- Run time: Up to 30 minutes of continuous ride time. Run time may vary depending on riding conditions, rider weight, climate, and/or proper maintenance.
- Constant starting and stopping may shorten ride time.
- Battery life can vary depending on proper maintenance and usage of the product.
- Do not charge at or below 32°F (0°C).

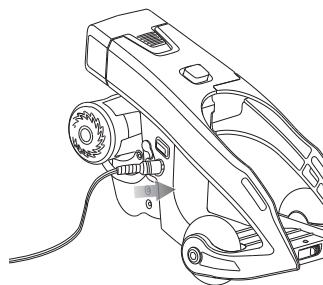


Charger
(Note: Charger design may vary from one shown)



1 Plug the charger plug into wall outlet. The light on the charger should be green.

Note: If green light (LED) does not turn on, try a different outlet.



2 Note: Make sure power button is in the **OFF** position. Plug the charger into the charger port. The light on the charger should turn red during charging. The light on charger will turn green again when charging is complete.

⚠ WARNING: Use **ONLY** with the recommended charger. Batteries are only to be charged under adult supervision. The charger is not a toy. Always disconnect the charger before wiping down and/or cleaning the Razor Turbo Jetts Electric Heel Wheels with a damp cloth.

The charger supplied with the Razor Turbo Jetts Electric Heel Wheels should be regularly examined for damage to the cord, plug, enclosure and other parts. In the event of such damage, the Razor Turbo Jetts Electric Heel Wheels must not be charged until it has been repaired or replaced.

Chargers have built-in overcharge protection to prevent battery from being overcharged.

Wall outlet - Green (stand by)

Wall outlet and product - Red (charging)

Wall outlet and product - Green (charged)

Note: Continue charging product even if light turns green prior to 3 hours.

⚠ WARNING: Battery charge can deplete over time. Periodically recharge battery when not in use.

PRE-RIDE CHECKLIST



Wheels

Periodically inspect the wheels for excessive wear. Wheels are not covered under your limited warranty.



Frame

Check for cracks or broken connections. Although broken frames are rare, it is possible for an aggressive rider to run into a curb or object and wreck, crack or break a frame. Get in the habit of inspecting your product on a regular basis.



Hardware/Loose Parts

Check and secure all fasteners before every ride. Make sure the strap is adhered properly in place before using. Before every ride, check all parts, such as nuts, bolts, fasteners, etc., to ensure they are secure and assembled correctly. There should not be any unusual rattles or sounds from loose parts or broken components. If the product is damaged, do not ride. **Reference "Safety Warnings" on pages 1 and 2 of this manual.**



Safety Gear

Always wear proper protective gear, such as an approved safety helmet. Elbow pads, kneepads and wrist guards are recommended. Always wear athletic shoes (lace-up shoes with rubber soles) and keep shoelaces tied and out of the way of the wheels, motor and drive system. **NEVER RIDE BAREFOOTED OR IN SANDALS.**



Laws and Regulations

Always check and obey any local laws or regulations.



Insurance

Do not assume that your existing insurance policies necessarily provide coverage for product use. Check with your insurance company for information regarding insurance.



Be Careful!

This product is not for aggressive or trick use. Avoid steep inclines and don't roll too fast — you can lose control and fall. Skate parks are not designed for young users. Never use in traffic or on the street and watch your surroundings for pedestrians, bikers, boarders and skaters.

USAGE

How to Ride

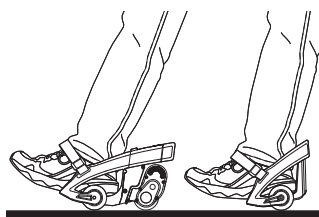
- Turbo Jetts are electric, motorized heel wheels that are controlled by your foot when you ride them.
- The front heel wheel is motorized and pulls you along while the back wheels just trail behind. Turbo Jetts are always used with one foot in front of the other.
- The first thing to do is decide which foot will be in front. Most often it is your stronger dominant foot that goes in front. If you skateboard or ride a RipStik you already know this.

Stage 1- Balance Practice (POWER OFF):

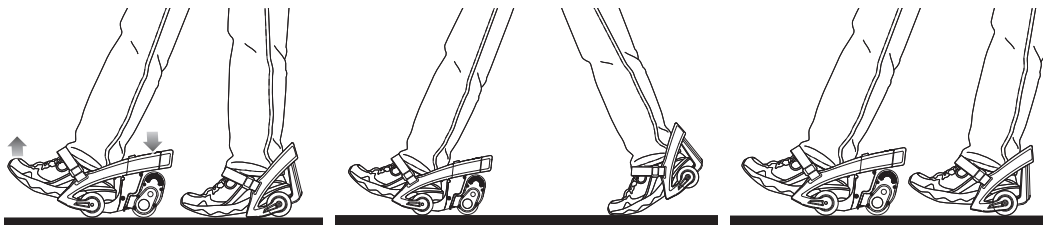
- Practice gliding with the power **OFF**.
- Standing with the motorized foot in front of the other, point your front toe up in the air pressing down on the back wheel. Make sure you feel the back wheel touching the ground.
- Now try pushing off with your back foot and glide on the wheels keeping the weight primarily over your front foot.
- Remember it's important to keep one foot in front of the other for stability. Try this on your own first or have a friend stand next to you if you need a little help.

Stage 2- Give It A Try (POWER ON):

- Now that you've practiced balancing and gliding, switch the power **ON**.
- With the motorized foot in front of the other, point your front toe up and push off with your back foot.
- Once you've started to glide the motor will automatically turn on and start to pull you.
- While keeping the weight primarily on your front foot, quickly get the back foot behind the front and glide on the wheels.



Note: Razor Turbo Jetts Electric Heel Wheels must be moving at least 3 mph (5 km/h), with the drive wheel engaged with the ground before the motor will start.

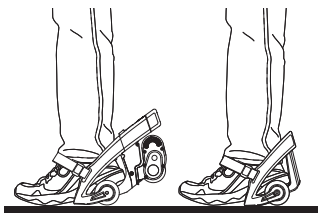


Note:

- Lighted wheels light up when wheels are in motion (Turbo Jetts DLX only).

How to Stop

The Razor Turbo Jetts Electric Heel Wheels, like RipStiks or skateboards do not have conventional "brake", however the Razor Turbo Jetts Electric Heel Wheels stop by putting the ball of your feet to ground.



Note: Release pressure from drive wheel to cut power to the motor then return to standing position.

Note: Motor will re-engage, (without having to kick start), if Razor Turbo Jetts Electric Heel Wheels have not slowed down to under 3 mph (5 km/h).

Note: Practice riding only in wide open areas clear from curbs, parking blocks and other obstacles. Impacting the wheels against any hard surface can damage the wheels. Wheels are not covered under the limited warranty.

Need Help? Visit our website for replacement parts, product support, a list of authorized service centers in the US and customer service contact information at www.razor.com. Please have the product I.D. code (located on the white label of your product) available for better assistance. Additional Customer Service contact information is listed at the back of this manual.

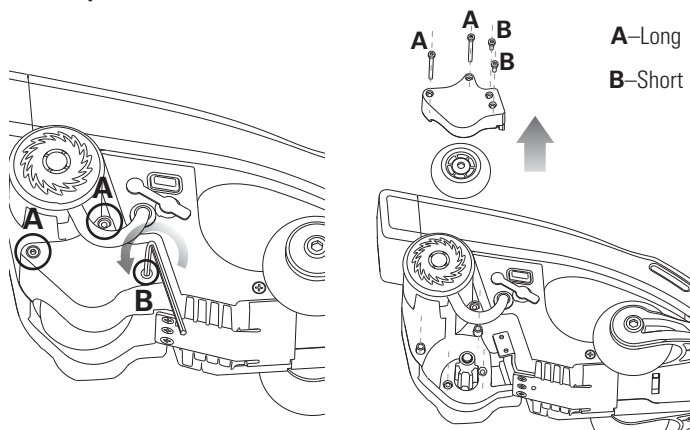
REPAIR AND MAINTENANCE

Before beginning repair or maintenance:

- Read the instructions
- Disconnect charger
- Turn the power button OFF and Remove Battery
- Exercise caution around exposed parts
- Contact Razor Customer Service if unsure about any repair or maintenance

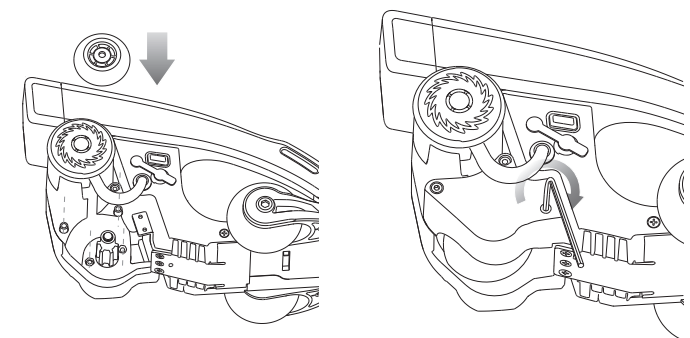
□ Drive Wheel Replacement

Tool Required: 2.5 mm Allen Wrench



1 Remove the four (4) hex bolts using 2.5 mm Allen wrench.

2 Remove cover and wheel.

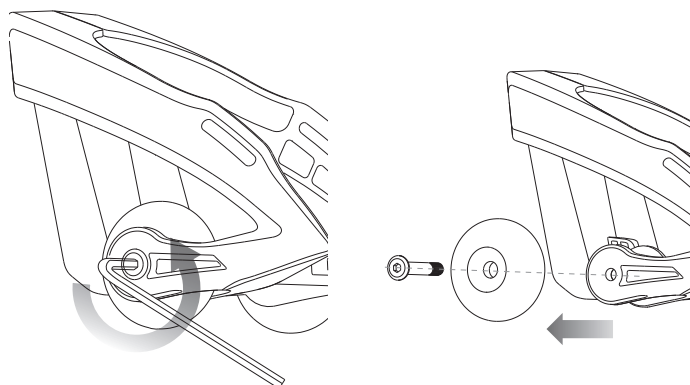


3 Replace new wheel.

4 Replace cover, and reinstall four (4) hex bolts, and tighten securely.

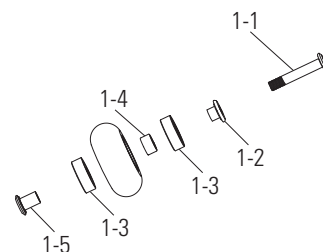
□ Wheel Replacement

Tool Required: 4 mm Allen Wrench



1 Loosen axle bolt using 4 mm Allen wrench.

2 Pull axle bolt out and remove wheel.

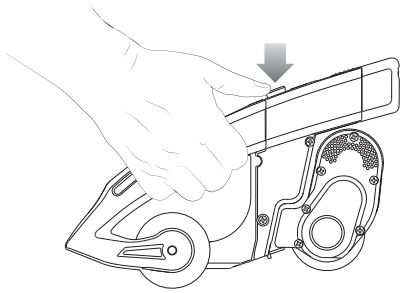


Wheel

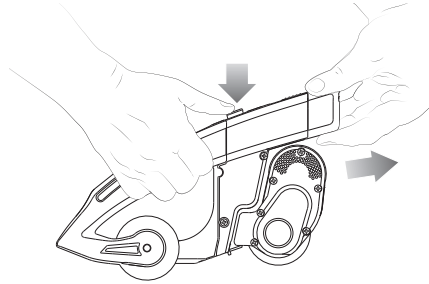
- 1-1 Axle Bolt (X2)
- 1-2 Plastic Bushing Short (X2)
- 1-3 Bearing (X4)
- 1-4 Spacer (X2)
- 1-5 Plastic Bushing Long (x2)

REPAIR AND MAINTENANCE

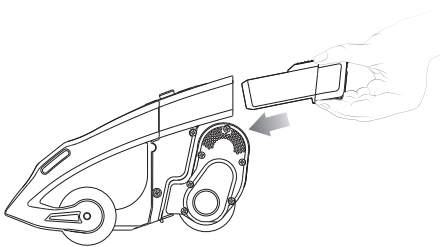
❑ Quick-Change Battery Replacement



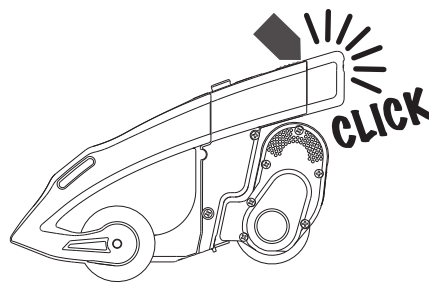
1. Press the release button.



2. Pull battery out.



3 Insert battery.



REPAIR AND MAINTENANCE

❑ Battery Care and Disposal

- To properly maintain your battery and ensure maximum battery life, carefully read the “Charging the Battery” section on page 6 of this owner’s manual.
- Battery pack should not be disassembled, crushed, punctured, opened or otherwise mutilated.



CONTAINS LITHIUM-ION BATTERY PACK. BATTERIES MUST BE RECYCLED.
UL 2271 COMPLIANT

Disposal: Your Razor Turbo Jetts Electric Heel Wheels uses a lithium-ion battery pack which must be recycled or disposed of in an environmentally safe manner. Do not dispose of a battery pack in a fire. The battery pack may explode or leak.

Do not dispose of a battery pack in your regular household trash. The incineration, land filling or mixing of batteries with household trash is prohibited by law in most areas. Return exhausted batteries to a federal or state approved lithium-ion battery recycler.

❑ Cleaning

Wipe with a damp cloth to remove dirt and dust. Do not use industrial cleaners or solvents, as they may damage the surfaces. Do not use alcohol, alcohol-based or ammonia-based cleaners, as they may damage or dissolve the plastic components or soften the decals.

❑ Charger

The charger supplied with the Razor Turbo Jetts Electric Heel Wheels should be regularly examined for damage to the cord, plug, enclosure and other parts and in the event of such damage, the product must not be charged until it has been repaired or replaced.

Use ONLY with the recommended charger.

❑ Wheels and Bearings

Wheels and drive system are subject to normal wear and tear. It is the responsibility of the user to periodically inspect wheels for excess wear and replace drive wheel as required. Under normal circumstances and conditions, Razor wheels and wheel bearings are maintenance free. Nonetheless, it is the responsibility of the owner or guardian to periodically inspect the wheels for wear and tear, the axle for proper tightness, bearings for side-to-side play, and for loose parts. When a wheel develops play, this is an indication of excess wear and replacement is necessary. Replace immediately with only genuine Razor wheels. Worn wheels/bearings are considered normal wear-and-tear and are not covered by the Razor Warranty. Wheels other than genuine Razor wheels may not be compatible with your Turbo Jetts Electric Heel Wheels. The use of anything other than genuine Razor replacement parts may affect your safety and will void your warranty.

❑ Replacement Parts

The most frequently requested replacement parts are available for purchase at some Razor retail partners. For the complete selection of replacement parts visit shop.razor.com.

❑ Repair Centers

For a list of authorized Razor repair centers:

- Check online at www.razor.com.
- Additional Customer Service contact information is listed on the back of this manual.

Recycling Lithium-ion Batteries:

Lithium-ion batteries are recyclable. You can help preserve our environment by returning your used rechargeable batteries to the collection and recycling location nearest you.

For more information regarding recycling of rechargeable batteries, call toll free 1-800-822-8837, or visit <http://www.call2recycle.org>

Caution: Do not handle damaged lithium-ion batteries.

TROUBLESHOOTING GUIDE

*Product(s) should be turned **OFF** and fully charged prior to doing any Troubleshooting.

NOTE: All troubleshooting steps should be performed by an adult only.

Problem	Possible Cause	Solution
Does not work out of the box	Product must be traveling at least 3 mph (5 km/h) before motor will engage	Razor Turbo Jetts Electric Heel Wheels must be moving at least 3 mph (5 km/h) with the drive wheel engaged with the ground before the motor will start.
No longer works	No lights on charger	Check power to wall outlet and/or try a different outlet.
	Undercharged battery	Check lights on charger: Plugged into wall - Green Plugged into wall & unit - Red (charging) Plugged into wall & unit - Green (charging complete) No lights/Blinking lights - Replace Charger
Short run time/runs slow	Rider's weight	Do not exceed 176 lb (80 kg) maximum weight limit.
	Riding conditions	Use only on flat, dry surfaces. Avoid inclines and areas with heavy debris.
	Battery not fully charged	Charge product - refer to page 6 for charging information.
	Old/damaged battery	Replace battery. Charge battery at least once a month when not in use.

For more troubleshooting tips, a list of available replacement parts or to locate an authorized Service Center in your area, visit our website at www.razor.com or call toll free +1 866-467-2967 to speak to a live Customer Service Representative.

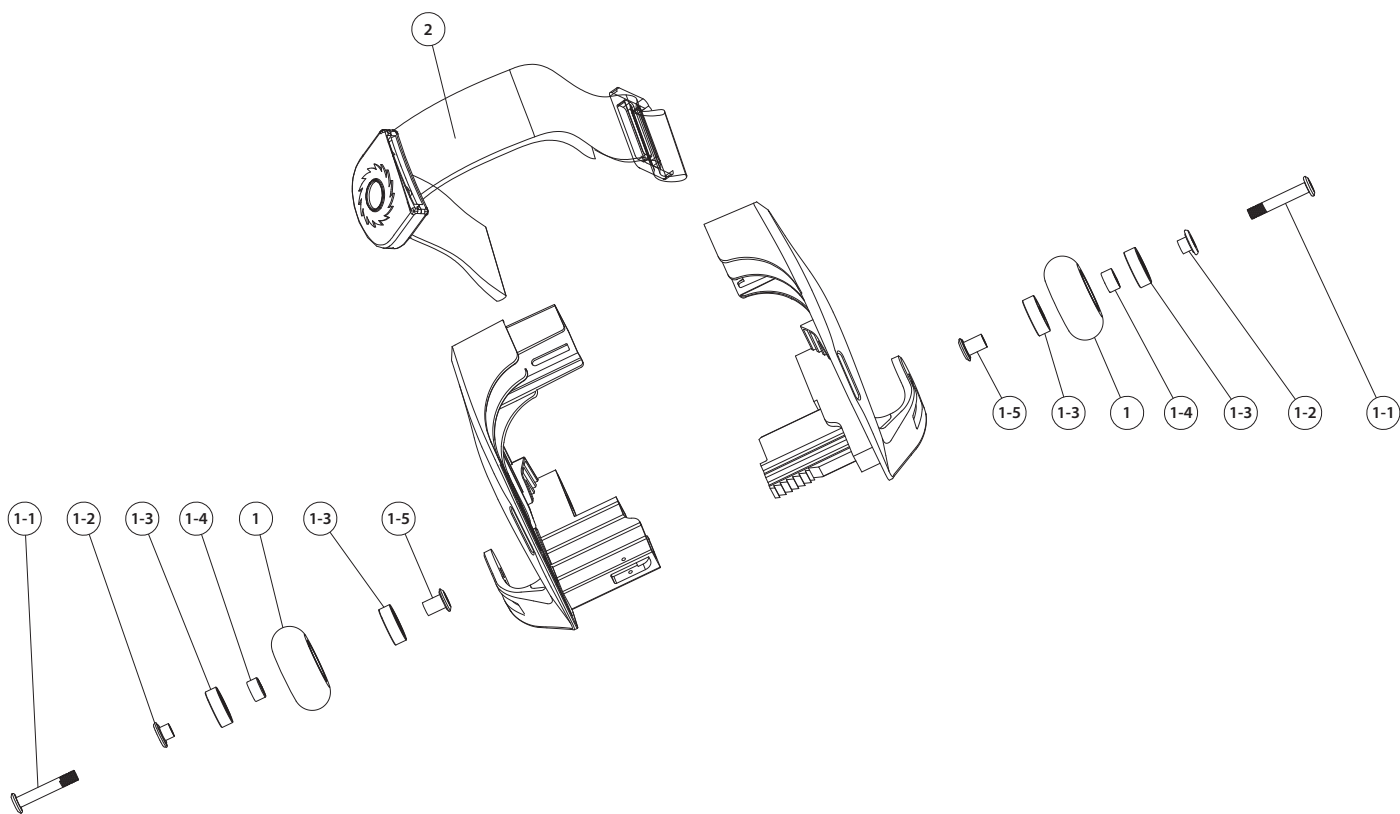
Need Help? Visit our website for replacement parts, product support, a list of authorized service centers in the US and customer service contact information at www.razor.com. Please have the product I.D. code (located on the white label of your product) available for better assistance. Additional Customer Service contact information is listed at the back of this manual.

RAZOR TURBO JETTS ELECTRIC HEEL WHEELS PARTS

Keep your Razor Turbo Jetts Electric Heel Wheels running for years with genuine Razor parts. Visit our website or e-mail us for more information on spare part availability. (Specifications subject to change without notice.)

- | | |
|--|----------------------------------|
| 1. Wheels (X2) (Lighted wheels for DLX only) | 1-4. Spacer (X2) |
| 1-1. Axle Bolt (X2) | 1-5. Plastic Bushing (Long) (x2) |
| 1-2. Plastic Bushing (Short) (X2) | 2. Strap |
| 1-3. Bearing (X4) | |

Non-Motorized Frame

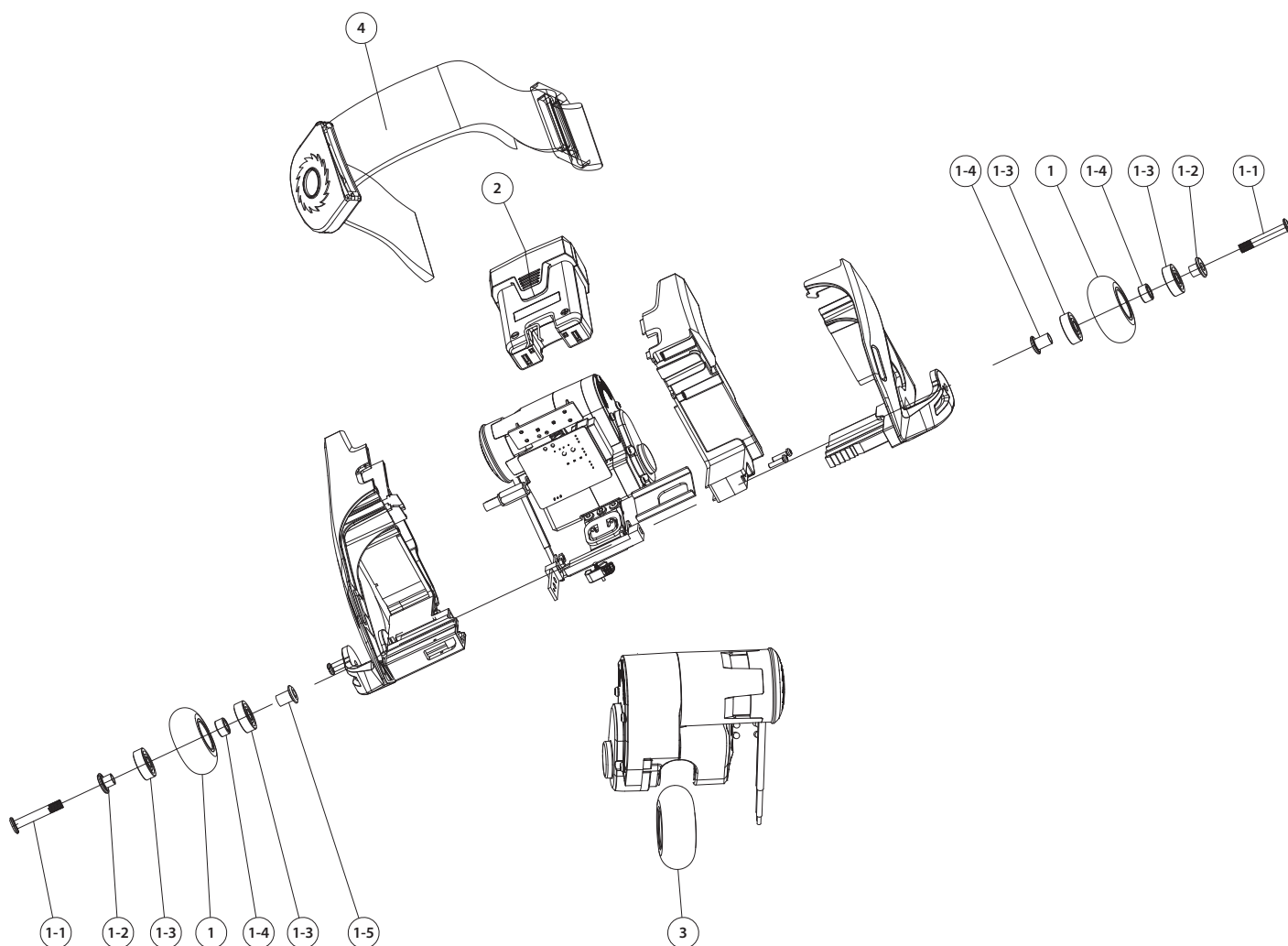


RAZOR TURBO JETTS ELECTRIC HEEL WHEELS PARTS

Keep your Razor Turbo Jetts Electric Heel Wheels running for years with genuine Razor parts. Visit our website or e-mail us for more information on spare part availability. (Specifications subject to change without notice.)

- | | |
|--|----------------|
| 1. Wheels (X2) (Lighted wheels for DLX only) | 2. Battery |
| 1-1 Axle Bolt (X2) | 3. Drive Wheel |
| 1-2 Plastic Bushing (Short) (X2) | 4. Strap |
| 1-3 Bearing (X4) | |
| 1-4 Spacer (X2) | |
| 1-5 Plastic Bushing (Long) (x2) | |

Motorized Frame



Need Help? Visit our website for replacement parts, product support, a list of authorized service centers in the US and customer service contact information at www.razor.com. Please have the product I.D. code (located on the white label of your product) available for better assistance. Additional Customer Service contact information is listed at the back of this manual.

NOTICE: INSURANCE

YOUR INSURANCE POLICIES MAY NOT PROVIDE COVERAGE FOR ACCIDENTS INVOLVING THE USE OF THIS SCOOTER/ELECTRIC RIDE-ON PRODUCT. TO DETERMINE IF COVERAGE IS PROVIDED, YOU SHOULD CONTACT YOUR INSURANCE COMPANY OR AGENT.

FCC COMPLIANCE

This device complies with Part 15 of the FCC Rules. Operation is subject to the following two conditions: (1) This device may not cause harmful interference, and (2) this device must accept any interference received, including interference that may cause undesired operation.

Note: This equipment has been tested and found to comply with the limits for a Class B digital device, pursuant to part 15 of the FCC Rules. These limits are designed to provide reasonable protection against harmful interference in a residential installation. This equipment generates, uses and can radiate radio frequency energy and, if not installed and used in accordance with the instructions, may cause harmful interference to radio communications. However, there is no guarantee that interference will not occur in a particular installation. If this equipment does cause harmful interference to radio or television reception, which can be determined by turning the equipment off and on, the user is encouraged to try to correct the interference by one or more of the following measures:

- Reorient or relocate the receiving antenna.
- Increase the separation between the equipment and receiver.
- Connect the equipment into an outlet on a circuit different from that to which the receiver is connected.
- Consult the dealer or an experienced radio/TV technician for help.

⚠ WARNING: Changes or modifications to this product not expressly approved by Razor USA LLC, could void the user's authority to operate the equipment.

WARRANTY

Razor Limited Warranty

The manufacturer warrants this product to be free of manufacturing defects for a period of 90 days from date of purchase. This Limited Warranty does not cover normal wear and tear, wheel, or any damage, failure or loss caused by improper assembly, maintenance, storage or use of the Razor Turbo Jetts Electric Heel Wheels.

This Limited Warranty will be void if the product is ever:

- used in a manner other than for recreation or transportation;
- modified in any way;
- rented.

The manufacturer is not liable for incidental or consequential loss or damage due directly or indirectly to the use of this product.

Razor does not offer an extended warranty. If you have purchased an extended warranty, it must be honored by the store at which it was purchased.

For your records, save your original sales receipt with this manual and write the serial number below.

CUSTOMER SERVICE CONTACT INFORMATION

Need Help? Visit our website for replacement parts, product support, a list of authorized service centers in the US and customer service contact information at www.razor.com. Please have the product I.D. code (located on the white label of your product) available for better assistance. Additional Customer Service contact information is listed below:

AMERICAS

Razor USA LLC
P.O. Box 3610
Cerritos, CA 90703
USA

+1 866 467 2967
Monday - Friday
8:00 AM - 5:00 PM Pacific Time
customersupport@razorusa.com

EUROPE, MIDDLE EAST, AFRICA

Razor USA LLC (Europe)
Handelsweg 2
2742 RD Waddinxveen
Netherlands

+44 (0) 120 267 2702
info@razoreu.com

ASIA

Razor USA LLC (Asia)
P.O. Box 3610
Cerritos, CA 90703
USA

+81 50 7579 6622
info@razor-asia.com

DISTRIBUTED IN THE UK AND IRELAND BY:

Re:creation Limited
2 Meadows Business Park
Station Approach, Blackwater
Camberley, Surrey GU17 9AB
United Kingdom

+44 (0) 118 973 6222 Tel
+44 (0) 118 973 6220 Fax
sales@recreationltd.co.uk

DISTRIBUTED IN AUSTRALIA BY:

Funtastic Limited
2/307 Ferntree Gully Road,
Mount Waverley Vic 3149,
Australia

+1 800 244 543
info@funtastic.com.au

Printed in China for Razor USA LLC.

Copyright © 2003-2018 Razor USA, LLC. All rights reserved. Razor® and the Razor logo design are among the registered trademarks of Razor USA LLC in the United States and/or select foreign countries. Razor Turbo Jetts Electric Heel Wheels logo design are trademarks of Razor USA LLC.