

3^{1/2}" SEMI-AUTOMATIC SHOTGUN

OWNER'S MANUAL

WARNING: This Manual contains important warnings and should be read carefully before using the shotgun.



CONTENTS

Brief History	2
Introduction	3
Safety Rules	4
Operation	5
Ammunition	6
Assembly	6
Trigger Safety	7
Loading	8
Unloading	9
Disassembly	10
General Assembly	14
Choke Tubes Information	20
Piston Use	21
Warranty	24

BRIEF HISTORY

The founder of Ata Arms, gifted craftsmen Celal YOLLU began writing his success story in the very heart of Anatolia when he discovered his talents for mechanical engineering as a young boy living in the Incesu township of Kayseri. He attained legendary successes for disassembling reassembling and for manufacturing any mechanical tool he laid his eyes on. He succeeded in repairing shotguns that many experienced gunsmiths failed to repair in 1955, when he was just 13 years old, his first signs of the success began to appear when he produced his first single barrel shotgun.

In the name of innovation, Celal YOLLU opened a modest workshop in Anatolia which allowed him to transform his dreams into reality.

By the year 1967, Celal YOLLU produced the first side-by-side shotgun in Turkey and every successful design thereafter has increased the demand for his products.

This increase in demand ultimately led Celal YOLLU to relocate his operations to Düzce, the center of the Turkish firearms industry. Within a short time of this move, he produced the first over-under shotgun in Turkey.

By the year, 1990 Celal YOLLU relocated the company once again to Istanbul in order to be closer to the European and Global markets.

Since the move to Istanbul, Celal YOLLU produced the first semi-automatic shotgun in Turkey.

In 2000, a partnership with the Beretta Group was formed and ATA Arms shotguns have thoroughly enjoyed a solid reputation for unwavering quality and reliability at a fantastic price point.

ATA Arms continues successful journey with the same determination and desire as Celal YOLLU expressed when he founded the company more than a half-century ago.

INTRODUCTION

For future reference, please keep a copy of this guide with the shotgun in the event you ever sell it. A copy of this user guide is also available at the web page of our company, which can be accessed at

<http://www.ataarms.com/en/index.php>

SAFETY RULES

Please read the following safety rules carefully before you use your shotgun. If not used properly, shotguns can be dangerous and can result in serious injury or death to both yourself and others. The following safety rules illustrate some of the user's basic responsibilities when handling the firearm.

- a) Never point your barrel in the direction of anything you do not intend to shoot, regardless of whether the shotgun is loaded or not.
- b) Do not point your shotgun towards an unsafe place for firing such as hard surfaces, including but not limited to, metals, rocks and water.
- c) Keep safety button engaged until you are ready to shoot, (the red warning line should be invisible).
- d) Keep your finger outside of the trigger guard, completely away from the trigger, until you decide to shoot.
- e) Be sure the barrel is clear of obstruction before shooting. (Bullet point) Be sure of your target.
- f) Learn the mechanical and safe handling characteristics of the firearm.
- g) Keep your shotgun out of the reach of children and other unauthorized possessors of firearms.
- h) Do not neglect performing routine maintenance on your shotgun.

- i) Always use appropriately marked and factory-loaded cartridges to SAAMI/CIP specifications with your shotgun. Avoid manually reloaded cartridges as this can be unsafe and will void the shotgun's warranty.
- j) Always use eye and ear protection when shooting.
- k) Do not drink alcohol or use drugs before or during operation of the shotgun. If you take medicine, do not handle a firearm while you are under its influence.
- l) Do not leave cartridges in your shotgun after usage.
- m) Do not make any mechanical changes to your shotgun. This can be unsafe and will void the shotgun's warranty.
- n) Have your shotgun repaired only by an authorized service.

WARNING: Every shotgun has the potential to claim the life of another human being. Read this manual carefully and comply with all safety rules.

WARNING: Discharging firearms in poorly ventilated areas, cleaning firearms, or handling ammunition may result in exposure to lead and other substances known to cause birth defects, permanent damage and other serious injuries. When maintaining your shotgun after use, make sure to do so in a well-ventilated area and remember to wash your hands after maintenance. (Friendly Tip: Use cold water when washing your hands to keep the chemicals and lead outside of your pores).

OPERATION

This semi-automatic shotgun uses gas pressure from the discharged shell in a precision, spring-loaded mechanism to eject the empty shell, and load a new cartridge into the chamber. The system reduces recoil, and permits the shooter to concentrate on the target.

This shotgun is produced in the high standards of European craftsmanship. The instruction in this book will help to assure that it delivers the fine performance for which it was designed.

AMMUNITION

USE ONLY SUITABLE AMMUNITION

This 12 gauge semi-automatic shotgun is chambered for $3\frac{1}{2}$ inch magnum shells. It is designed to be used with factory-loaded shotshells between ($1\frac{1}{8}$ oz) up to ($2\frac{3}{8}$ oz).

Use of re-loaded ammunition voids the One Year Factory Warranty.

WARNING: Never shoot slugs with a full choke. Use only the most open (improved cylinder) choke, which is marked with four cuts.

WARNING: Never use cartridges with a case longer than the chamber, as this would have serious consequences for both the gun and the shooter.

WARNING: Never shoot steel shot with a full choke. Use only modified, improved

cylinder or skeet choke tubes, marked three, four and five cuts respectively.

Note: Always use ammunition that is powerful enough to fully cycle the action.

ASSEMBLY

MOUNTING THE BARREL TO THE RECEIVER

Make sure the barrel is clean and free of heavy lubrication. Remove the fore-end by unscrewing the fore end nut (counter clockwise). Slide the fore-end off the magazine tube. Mount the barrel to the receiver by sliding the barrel into the receiver, with the barrel ring on the magazine tube. Pull the bolt handle half way back to fully seat the barrel in the receiver. (See figure 1 - 2).

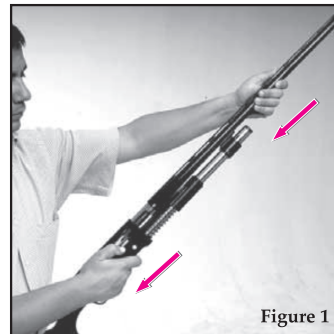


Figure 1

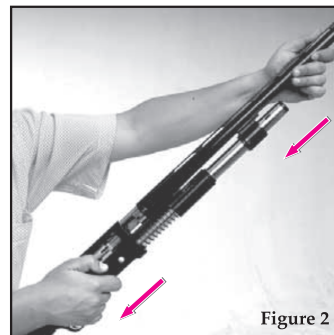


Figure 2

MOUNTING THE FORE-END

Drop the carrier by pressing the trigger guard latch button (the button beside the trigger guard). Pull back the bolt handle. The action should stay open. Mount the fore-end by carefully sliding it over the magazine tube, and seating it into the receiver. (See figure 3) Screw the fore-end nut onto the front of the magazine tube, finger-tight. Close the mechanism by pressing the carrier latch button (the button on the side of the receiver).

MANUAL TRIGGER SAFETY

Before loading the gun, make sure the manual trigger safety is on. To activate the manual trigger safety, press the manual safety button on the side of the trigger guard from the left side of the gun to the right. When the trigger safety is "on" the black button will protrude from the right side of

the trigger guard. When the trigger safety is "off", the button will protrude from the left side of the trigger guide, and the red band around the button will be visible. The manual trigger safety is intended only to lock the trigger. It is not a substitute for safe gun handling.

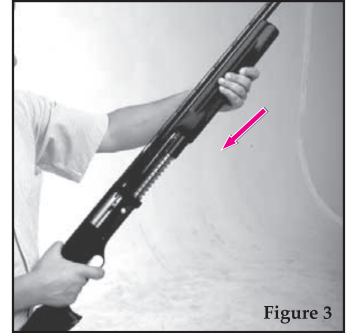


Figure 3

LOADING

Put the manual trigger safety "on". Pull the bolt handle fully to the rear, and release it. Load cartridges by sliding them forward into the magazine tube, depressing the cartridge carrier as you do so. (See figure 4)

PLACING CARTRIDGE ON THE CARRIER

After loading the magazine tube, by pulling the button on the side of trigger group, cartridge will drop on the carrier. (See figure 5)

LOADING A CARTRIDGE INTO THE BARREL

In order to move a cartridge from the carrier to the barrel, pull the bolt handle fully to the rear, and release it. The magazine tube holds 2 cartridges when

the magazine plug is installed. The magazine tube holds four 3" cartridges three 3¹/₂" cartridges when the plug has been removed. To load an additional cartridge, load one cartridge into the barrel, then load another cartridge into the magazine tube, and press the cartridge carrier extractor button to drop the cartridge carrier. When you are ready to fire, put the manual trigger safety in the "off" position. The gun is now ready to fire.

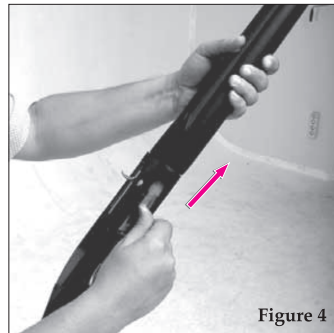


Figure 4

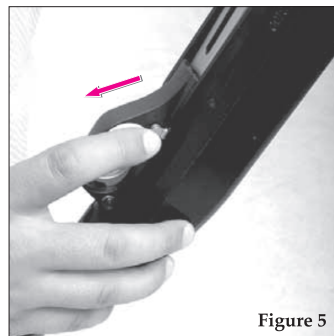


Figure 5

UNLOADING

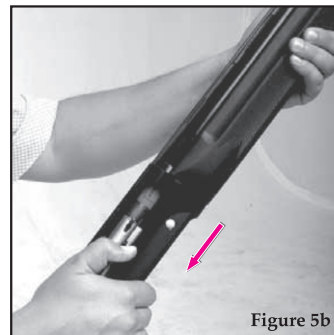
Spent cartridges will be ejected automatically. To unload unspent cartridges from the gun, first be sure the safety is in the "on" position. Never permit your finger or another object to come in contact with the trigger while unloading.

Pull the bolt handle to the rear to eject any cartridge in the chamber. If there is a cartridge in the chamber and a cartridge on the cartridge carrier, this will also load the cartridge from the carrier into the chamber. To eject that cartridge, pull and release the bolt handle again.

If a cartridge remains in the magazine tube, by pulling the button on the side of the trigger guard to place the cartridge on to the carrier. Pull the bolt handle to place that cartridge into the chamber,

then pull it again to eject the cartridge from the chamber. Continue until all cartridges have been ejected. (See figure 5a-5b)

Always check to make sure the gun is completely unloaded when you are not shooting.



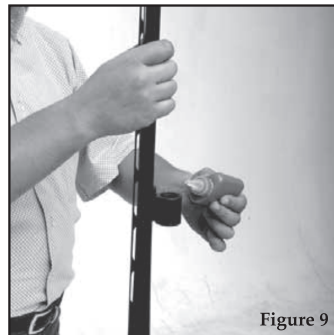
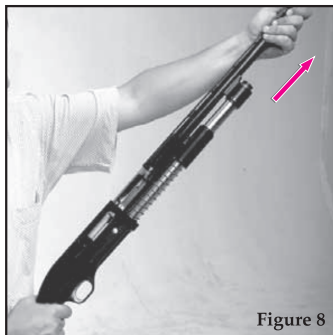
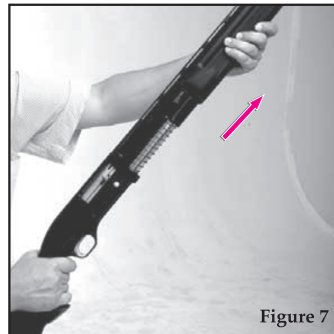
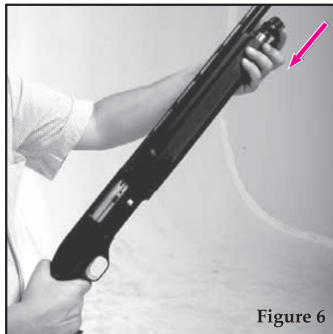
DISASSEMBLY

REMOVING THE FORE-END

Unload the gun. Unscrew the fore-end nut (counter clockwise) and remove it. (See figure 6) Slide the fore-end toward the muzzle, and remove it. (See figure 7)

REMOVING THE BARREL

After removing the fore-end , pull the barrel out of the receiver and slide it off the magazine tube. (See figure 8) In order to assure proper operation of the semi-automatic mechanism, it is important to clean and lubricate the barrel ring and magazine tube also pistons after each shooting session. Use a good quality gun cleaning solvent and oil. (See figure 9).



REMOVING AND INSTALLING THE BOLT GROUP

To remove the bolt group for cleaning or lubrication, with your left hand move the bolt forwards and backwards while acting this way pull the bolt handle straight out from the right side of the bolt. (See figure 10) Lift up the operating rod with your left hand so the bolt group will slide out from the receiver. (See figure 11)

Now lift up the bolt group, pull and take it out from the operating rod piston (See figure 12) then take the bolt from operating rod. (See figure 13)

RE-INSTALLING THE BOLT GROUP

After cleaning and lubricating the bolt group, it can be reinstalled by sliding it back into the receiver. The hammer must be cocked during this procedure. Complete the installation by pushing the bolt handle back into the bolt.

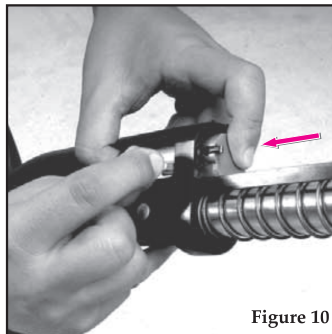


Figure 10

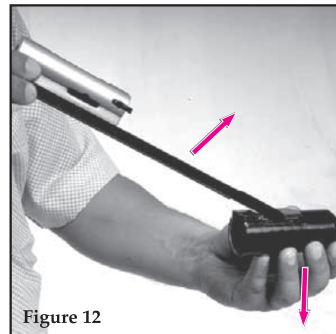


Figure 12

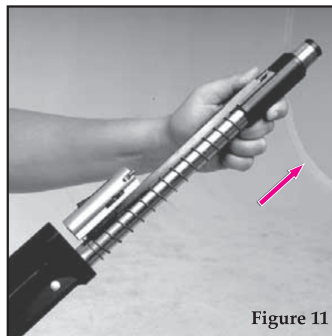


Figure 11

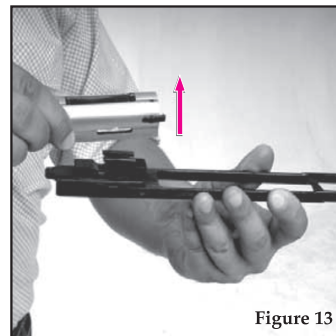


Figure 13

REMOVAL AND RE-INSTALLATION OF THE TRIGGER GROUP

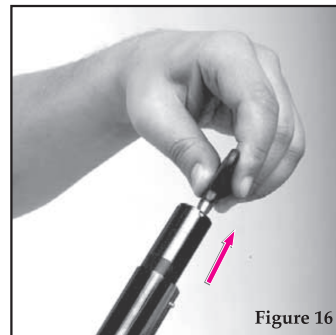
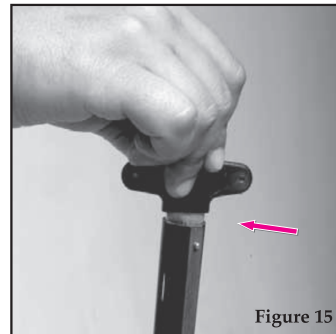
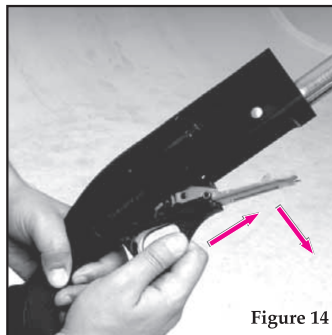
Unload the gun. In order to remove the trigger group, push the receiver pin through the receiver and remove it. While pushing the cartridge latch button, push the trigger group forward and remove it. (See figure 14) After cleaning and lubricating the trigger group, it is re-installed by pressing the cartridge latch button while pushing the trigger group rearward. Align the hole in the trigger group with the hole for the receiver pin, and re-install the receiver pin.

REMOVING AND RE-INSTALLING CHOKE TUBES

Unload the gun and put the safety in the "on" position. Remove a choke tube by inserting the choke key, and turning

it counter clockwise. After cleaning and lubricating, a choke tube may be reinstalled by starting the threads by hand, then tightening the choke tube with the choke key. (See figure 15, 16) After each shooting session, the choke tube should be removed, cleaned, lubricated and re-installed to prevent corrosion.

Consult the choke value chart for suggested values.



REMOVING THE MAGAZINE PLUG

Since hunting regulations in some areas limit the number of cartridges allowed in the magazine, this shotgun comes with a limiter plug installed that reduces its magazine capacity to two shells.

WARNING: Visually and manually check to be sure no ammunition is present in the chamber or magazine.

To remove this plug, follow the directions below:

Unscrew and remove the fore-end nut. There are two magazine fuse extractors at magazine tube. With your left hand forefinger press one of the magazine fuse extractor and with your right hand by means of a screwdriver or a similar tool press the other magazine fuse extractor and lift two or three millimeter up. Now remove the magazine blocker and pull up the limiter plug from the magazine tube. Replace the fore-end and fore-end nut by screwing in into place. (See figure 17-18)

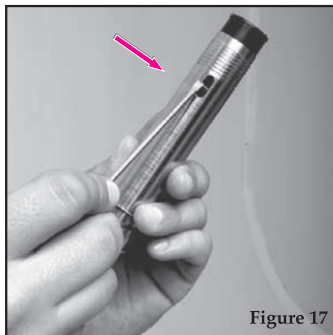


Figure 17

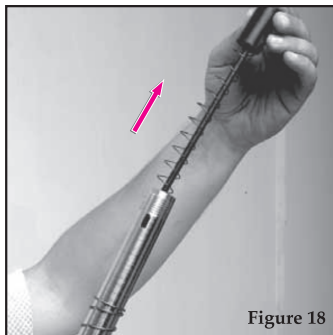


Figure 18

MAINTENANCE

Proper maintenance is important to assure the best functioning of the gun, and the safety of the shooter.

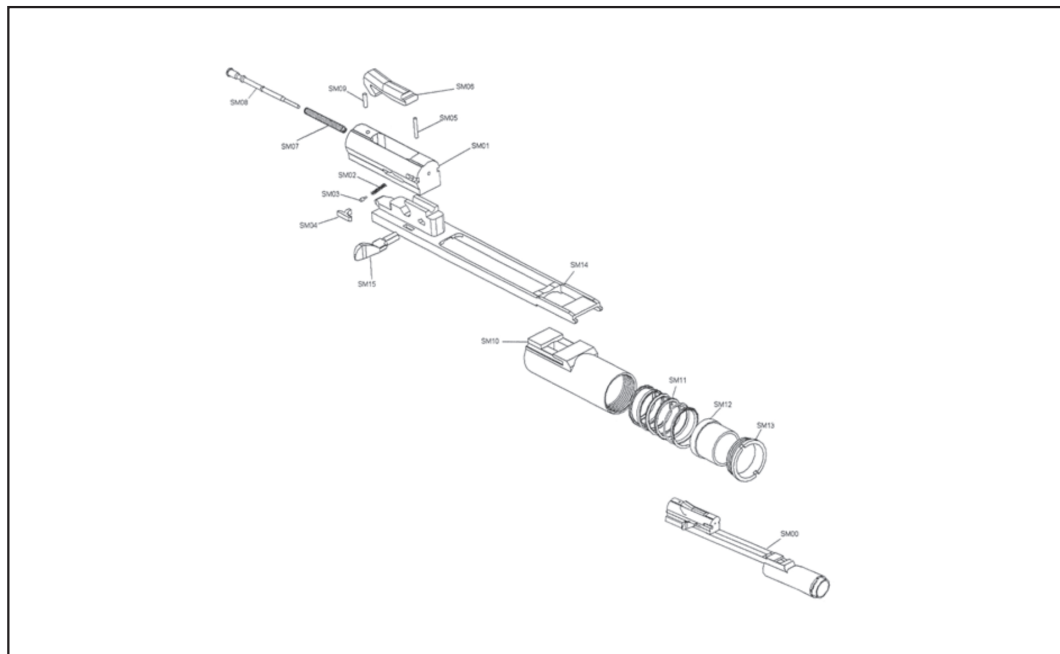
- Before using the shotgun, make sure that the barrel is clean, and free of any grease or obstruction.
- After each shooting session, dismantle the barrel, the barrel choke and the bolt for cleaning and lubrication. After cleaning and lubricating, reinstall them as instructed.
- After every shooting session, clean the magazine tube, the barrel ring and the gas ports (the two small holes that pass from the barrel to the inside of the barrel ring).
- Periodically during a shooting session, check the tightness of the fore-end nut. If the nut becomes loose, gas will leak and the semi-automatic mechanism will not function properly.

[illegible]

GENERAL ASSEMBLY - PART LISTING

Stock No	Description	Stock No	Description
SG00	RECEIVER	SM00	BOLT GROUP
SG01	ENJEKTOR SPRING PIN	SG22	PISTON 1
SG02	ENJEKTOR SPRING	SG23	PISTON 2
SG03	ENJEKTOR	SN01	BARREL
SG04	ENJEKTOR PIN	SN02	FRONT SIGHT
SG05	CARRIER LATCH	SN03	BREECH
SG06	CARRIER LATCH BUTTON SPRING	SN04	GAS HOLE O-RING
SG07	CARRIER LATCH BUTTON	SN05	MOBIL CHOKE (F)
SG08	CARRIER LATCH BUTTON PIN	SN05	MOBIL CHOKE (IM)
SG09	CARRIER LATCH SPRING	SN05	MOBIL CHOKE (M)
SG10	CARRIER LATCH PIN	SN05	MOBIL CHOKE (IC)
SG11	MAGAZINE TUBE	SN05	MOBIL CHOKE (S)
SG12	MAGAZINE CAP	SN06	CHOKE TUBE
SG13	MAGAZINE SPRING	SN07	CHOKE TUBE CAP
SG14	MAGAZINE PLUG	SA01	STOCK (SYNTHETIC)
SG15	MAGAZINE SPRING CAP	SA02	STOCK PLUG
SG16	NUT KOCKING SPRING	SA03	RECOIL TUBE WASHER
SG17	NUT LOCKING	SA04	RECOIL TUBE NUT
SG18	NUT LOCKING SCREW	SA05	RUBBER RECOIL PAD
SG19	RECOIL TUBE	SA06	RUBBER RECOIL PAD SCREW (2pcs)
SG20	RECOIL NUT	SA07	FORE-END
SG21	SLIDING BAR HANDLE SPRING	SA08	FORE-END NUT

BOLT GROUP ASSEMBLY-M00

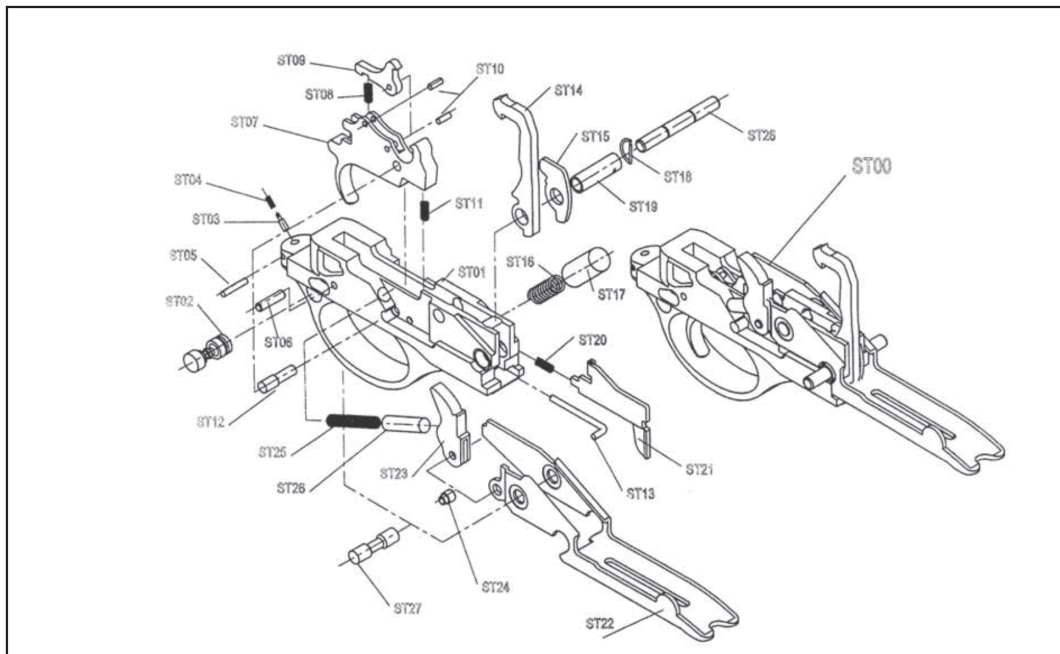


BOLT GROUP - PART LISTING - M00

Stock No Description

SM00	BOLT GROUP
SM01	BOLT
SM02	EXTRACTOR SPRING
SM03	EXTRACTOR SPRING PIN
SM04	EXTRACTOR
SM05	EXTRACTOR PIN
SM06	LOCKING BLOCK
SM07	FIRING PIN SPRING
SM08	FIRING PIN
SM09	FIRING RETAINING PIN
SM10	SLIDING BAR TUBE
SM11	SLIDING BAR TUBE SPRING
SM12	SLIDING BAR FOLLOWER
SM13	SLIDING BAR TUBE NUT
SM14	SLIDING BAR HANDLE
SM15	BOLT HANDLE

TRIGGER GROUP ASSEMBLY-B00






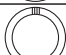
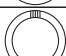
TRIGGER GROUP - PART LISTING - B00

Stock No	Description	Stock No	Description
ST00	TRIGGER GROUP	ST14	HAMMER
ST01	TRIGGER GUARD	ST14	HAMMER LATCH
ST02	HAND SAFETY	ST16	HAMMER SPRING
ST03	SAFETY PLUNGER SPRING PIN	ST17	HAMMER SPRING CAP
ST04	SAFETY PLUNGER SPRING	ST18	HAMMER TUBE PISTON RING
ST05	SAFETY SPRING RETAINING PIN	ST19	HAMMER TUBE PIN
ST06	TRIGGER FIXING PIN	ST20	TRIGGER GUARD LATCH SPRING
ST07	TRIGGER	ST21	TRIGGER GUARD LATCH
ST08	DISCONNECTOR SPRING	ST22	CARRIER
ST09	DISCONNECTOR	ST23	BREECH BOLT LATCH
ST10	DISCONNECTOR PIN	ST24	BREECH BOLT LATCH PIN
ST11	TRIGGER SPRING	ST25	BREECH BOLT LATCH SPRING
ST12	TRIGGER PIN	ST26	BREECH BOLT LATCH SPRING CAP
ST13	HAMMER LATCH SPINDLE	ST27	CARRIER PIN
		ST28	RECEIVER PIN

WHAT'S MULTI CHOKE?

The purpose of multi choke is to make barrel's tip narrowed down to shoot for and more collectively or to enlarge barrel's tip to shoot more wider groupment for small shots.

CHOKE VALUES AND AREAS USED FOR SEMI-AUTOMATIC SHOTGUN

CHOKE VALUE	AREAS USED	SYMBOL
* FULL	For duck and goose hunting with 40-45 yard shots For long range hunting with lead shot and tight groups.	
** IMPROVED MODIFIED	For hunting pheasant, ducks with 30-40 yard shots.	
*** MODIFIED	For hunting woodcock, pheasant & quail with 30-35 yard shots Long range hunting with steel shot and tight groups.	
**** IMPROVED CYLINDER	For quail, dove and target shooting. For shorter distance more open shooting	
***** SKEET	For sporting clay and skeet shooting. Short distance, more open shooting.	

WARNING:

Do not use choke values 1, 2 or 3 with slugs, single bullets or single projectiles. Do not use choke value 1 or 2 with steel shot.

WARNING: Discharging firearms in poorly ventilated areas, cleaning firearms or handling ammunitions may result in exposure to lead and other substances known to the State of California to cause birth defects, reproductive harm, and other serious physical injury. Have adequate ventilation at all times. Wash hands thoroughly after exposure.

HOW TO USE PISTONS

There are two pistons for to discharge the gas (see General Assembly exploded view stock no SG22-SG23) on one piece written light loads (in top of the fore-end) the other one is written heavy loads (in the barrel sing) We recommend to use the pistons as it is shown below. (See figure 19-20-21)

Cartridge (oz)

Starting 1 $\frac{1}{8}$ oz up to 1 $\frac{1}{2}$ oz

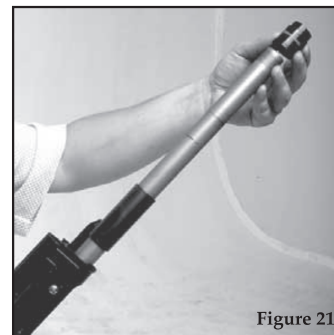
USE LIGHT LOADS

Cartridge (oz)

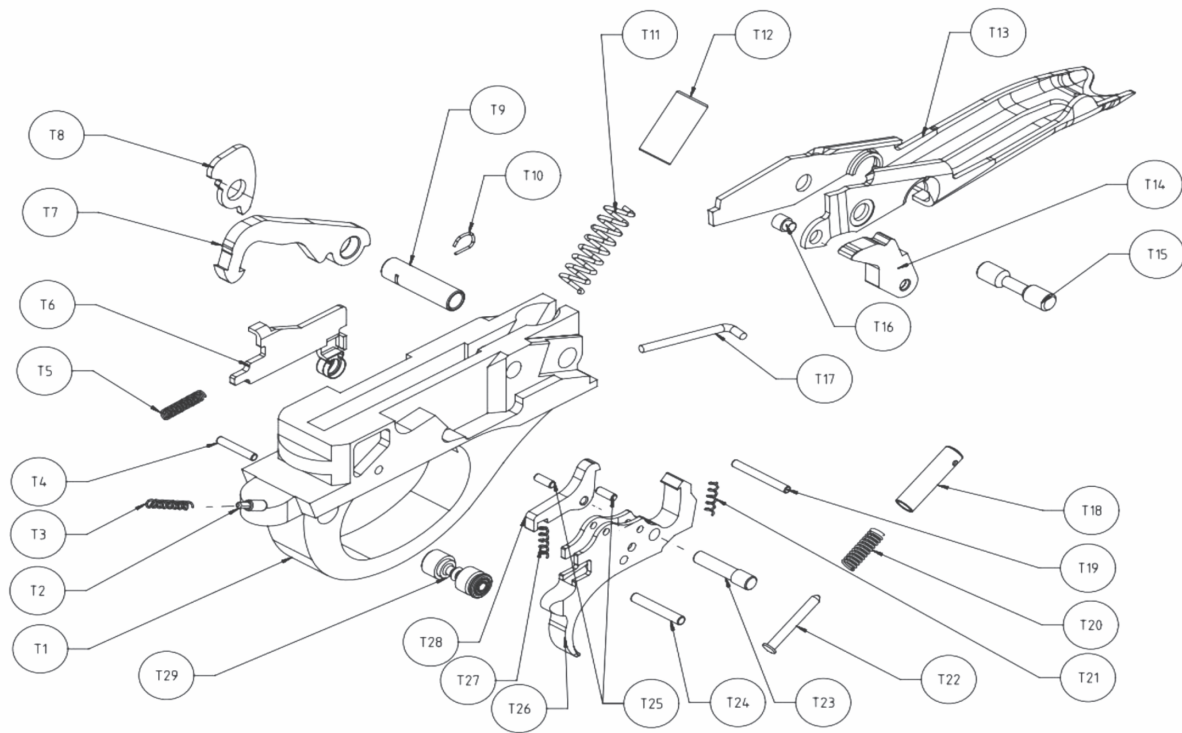
heavy then 1 $\frac{1}{2}$ oz and all 2 $\frac{3}{8}$ oz cartridge

USE HEAVY LOADS

This system is designed reducing the pressure to have comfort to shooter and a long life to the shotgun.



TRIGGER ASSEMBLY AND PARTS LIST



Part No	Part Name	Part No	Part Name
T1	Trigger Guard	T16	Pin, Carrier Lifter Latch
T2	Detent, Safety	T17	Pin, Carrier Latch "L Shape"
T3	Spring, Safety Detent	T18	Cap, Carrier Lifter Latch, Spring
T4	Pin, Spring Safety Retaining	T19	Pin, Hammer Stop
T5	Spring, Carrier Lock Button	T20	Spring, Carrier Lifter Latch
T6	Carrier Lock Button	T21	Spring, Trigger
T7	Hammer	T22	Pin, Carrier Lifter Latch, Spring
T8	Carrier Latch	T23	Pin, Trigger Pivot
T9	HammerTube	T24	Pin, Trigger Stop
T10	Hammer Tube "D" Ring	T25	Pin, Disconnecter
Til	Spring, Hammer	T26	Trigger
T12	Cap, Hammer Spring	T27	Spring, Disconnecter
T13	Carrier	T28	Disconnecter
T14	Lifter, Carrier Latch	T29	Safety
T15	Pin, Carrier		

Ata Arms Warranty Information

The Manufacturer warrants that this firearm was manufactured free of defects in material or workmanship; and for a period of two (2) years after date of original purchase, the Manufacturer and/or its local official Distributor/s agree to correct any such defect in this firearm by repair or replacement (at their discretion and, if the firearm is to be replaced, with the same or a comparable quality firearm). The Manufacturer does not warrant the wood (stock and forend), grips or metal finish with respect to finish, matching of pieces, dents, scratches, cut, dings, etc. which are or should be apparent to the purchaser when the product is purchased. It is the customer's responsibility to inspect this particular product prior to purchase to ensure that it is free from defects or damage. This Warranty is effective from the original retail purchase of the firearm only. Ata Arms assumes no liability for consequential, punitive or other damages (except as set forth herein) related to a warranty claim. A service and/or handling charge may be required for non-warranty repairs.

THE MANUFACTURER AND/OR ITS LOCAL OFFICIAL DISTRIBUTOR(S) ASSUME NO RESPONSIBILITY FOR PRODUCT MALFUNCTION OR FOR PHYSICAL INJURY OR PROPERTY DAMAGE RESULTING IN WHOLE OR IN PART FROM CRIMINAL OR NEGLIGENT USE OF THE PRODUCT, IMPROPER OR CARELESS HANDLING, UNAUTHORIZED MODIFICATIONS, USE OF DEFECTIVE, IMPROPER HAND-LOADED, RELOADED OR REMANUFACTURED AMMUNITION, CUSTOMER ABUSE OR NEGLECT OF THE PRODUCT OR OTHER INFLUENCES BEYOND THE MANUFACTURER'S DIRECT AND IMMEDIATE CONTROL. THIS WARRANTY DOES NOT APPLY TO NORMAL WEAR OF ANY PARTS, INCLUDING METAL, WOOD, PLASTIC, RUBBER, SURFACE FINISH OR OTHER MATERIALS, OR IF UNAUTHORIZED REPAIR AND/OR ALTERATION HAS BEEN PERFORMED.

The terms of this Warranty cannot be changed except in writing by an officer of the Manufacturer or its local official Distributor.

Wholesalers, dealers or gunsmiths (unless they are a repair station authorized by the Manufacturer and/or by its local official Distributor (s) are not authorized to make any warranty repair or adjustment on behalf of the Manufacturer.

This Warranty gives only the original personal retail purchaser specific legal rights.

Should warranty service be required for this firearm, please return it to the Manufacturer (for firearms purchased in Turkey) or to its local official Distributor(s) in your country through the Retailer from whom you purchased, giving the full details of the defect or malfunction and stating date of purchase, along with a copy of your sales receipt.

“Waranty period is 2 (two) years for manufacturing defects”

For Any Waranty Claims Please Cantact:

Briley Manufacturing, Inc

1230 Lumpkin Road

Houston, Texas 77043

(713) 932-6995

NOTES

NOTES



Ata Silah San. A.Ş.

Alemdağ Mah. Elmalı Sk. No:5/A Çekmeköy- İstanbul

T: +90 216 466 45 68 F: +90 216 466 45 71

ata@ataarms.com



ataarms.com.tr



ataarmstr



ataarms



ataarms.com